

Crossword Puzzle

ACROSS: 1. Map, 6. Curtain material, 11. Giant kangaroo, 12. Extinct Arawakan Indian, 13. Merry, 14. County in Scotland, 15. Behave, 16. Object, 18. Source of metal, 19. Tipster, 21. Parcel of ground, 22. War god, 23. Ant, 25. Sheep disease, 27. Cowed, 29. Most sensitive, 31. Tides god, 33. Broadly, 36. Food fish, 38. Tree trunk, 41. Moon, 42. Pop, 43. At no time, 45. Ill-bred person, 46. Mature insect, 48. Emerge, 50. Concentrate, 51. Speak from memory, 52. Picture border, 53. Gray rock, 7. Tin container, 8. Severity, 9. Harden, 10. Hebrew lawyer, 11. Salt in appearance, 13. Destinies, 17. Shoshonean Indians, 20. Like warm, 22. Spring month, 24. Spread, 26. Plant, 28. Deal out, 30. Train the mind, 31. Legislative body, 32. Commerce, 34. Sweetheart, 36. Show data, 37. Wit, 38. Manila hemp, 42. Twist, 43. Organ of scent, 44. Worthless, 47. Adhesive, 49. Insect's egg



Solution to Friday's Puzzle

DOWN: 1. Dress, 2. Vary warm, 3. Among, 4. Take delight, 5. Shake, 6. Headliner, 7. Tin container, 8. Severity, 9. Harden, 10. Hebrew lawyer, 11. Salt in appearance, 13. Destinies, 17. Shoshonean Indians, 20. Like warm, 22. Spring month, 24. Spread, 26. Plant, 28. Deal out, 30. Train the mind, 31. Legislative body, 32. Commerce, 34. Sweetheart, 36. Show data, 37. Wit, 38. Manila hemp, 42. Twist, 43. Organ of scent, 44. Worthless, 47. Adhesive, 49. Insect's egg

The House of the Week

Colorful Western Ranch Plan Features Modern Innovations



Long and low roof lines, with large overhangs all around, add to the exterior design of this modern adaptation of an original western ranch house. Living and sleeping areas of the house are fully separated.

By JOHN O. B. WALLACE
This stylish ranch combines the old and romantic west with the improvements of the newest home designs. Numbered X-26 in the architect-designed House of the Week series, it is a modern adaptation of the cattle ranch dwelling.

The beam-ceiling living room is 15 feet 6 inches by 20 feet 6 inches and has a stone raised-hearth fireplace. The beams support a wire-brushed surfwood ceiling. The living room has a view both to the rear garden and to the front entrance courtyard. The latter is shielded from the street by a stone wall. Other living room features include cove lighting and hardwood paneling.

The dining room, 12 by 15 feet, has a slate floor and can be shut off from the living room by sliding shoji screens. An aluminum sliding door opens from the dining room onto a rear patio. There are three large bedrooms and three baths on the one level. The basement version provides space for a fourth bedroom and two more baths. All bedrooms have sliding door closets. The master bedroom has

its own private bath with shower. Baths are arranged for economical installation of plumbing. The family kitchen is 19 feet 6 inches by 20 feet 6 inches. It has a beam ceiling, cove lighting and a fireplace with built-in barbecue grille. The kitchen proper has an all-in-one kitchen unit and matching cabinets. There is ample space for informal family dining. The mud room, between the family kitchen and the garage, can be entered from an outside entrance and from the garage. The laundry center, with washer, dryer and tray, is in an alcove off the main bedroom hall—handy to accumulated soiled clothes. A rear path extends nearly the full width of the house. In the basement version, there is a lower recreation room, 24 by 21 feet 6 inches, with a raised hearth fireplace. The basement version likewise provides space for a large work or hobby shop, 17 by 29 feet. The double garage, with access to the family kitchen through the mud room, has numerous storage shelves and a large storage closet. There are closets in the mud room, the entrance foyer and in each of the three bedrooms. In the bedroom wing, additionally, there are a linen closet and a large special closet just outside the master bedroom. The entrance courtyard has a low, stone wall as a backdrop for plantings. The plan provides for

It was created, appropriately, by a western architect. He borrowed from western lore for structural lines of the house, but elsewhere his plan was steadfastly modern. By Architect Jerry Gropp of Seattle, Wash., the design is an improvement over many ranch homes for several reasons:
• It completely divides the sleeping and living areas
• The interior abounds in a variety of decorative details
• The owner has the option of building with or without a basement. Full details on this breath-of-the-west plan, in an easy-to-follow area

by area description, follow:
The dining room, 12 by 15 feet, has a slate floor and can be shut off from the living room by sliding shoji screens. An aluminum sliding door opens from the dining room onto a rear patio. There are three large bedrooms and three baths on the one level. The basement version provides space for a fourth bedroom and two more baths. All bedrooms have sliding door closets. The master bedroom has

construction either with or without a basement. There is separation of sleeping and living areas. Halls have luminous ceilings. In the basement version, the basement stairwell is illuminated from above by natural light. Most of the rear wall of the house is crystal glass, nearly floor to ceiling in height. Wire-brushed plywood and battens are used for exterior walls along with some stone veneer. The roof is of white marble chips. The rear patio is of pebble-finish concrete. Overall dimensions of the house are 60 by 66 feet 6 inches. The main level living area has 2,012 sq. ft.; the garage has 700 sq. ft. For the basement version add 1,634 sq. ft. but remember the dollar cost per square foot for the basement is much less than for living areas. St. Patrick's Cathedral in New York seats 4,500 people.

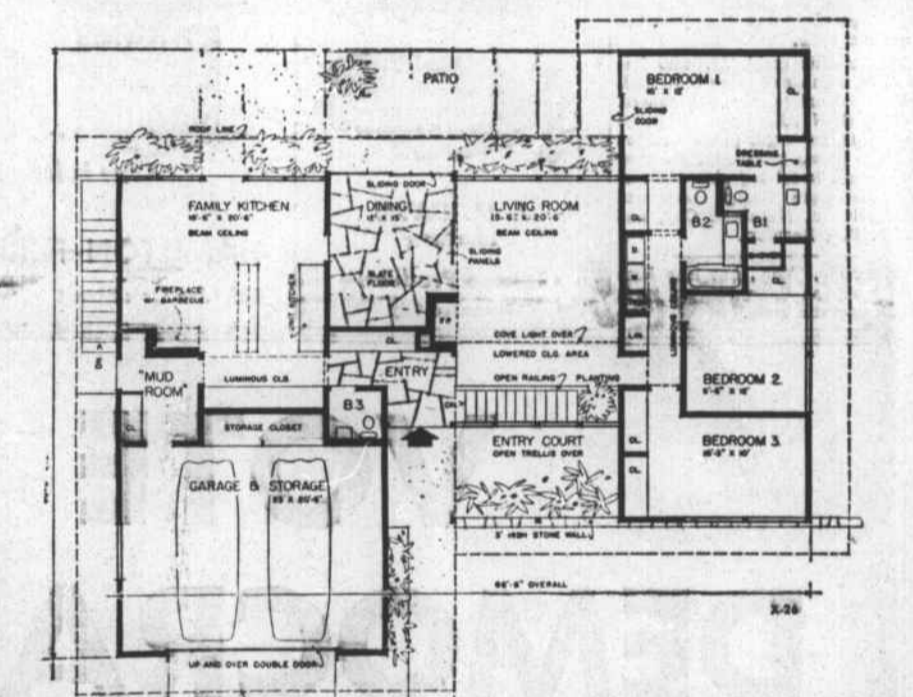
See Us For Mechanical Tools Carpenter Tools WESTERN AUTO STORE Morehead City

Sideline Becomes Big Business for Factory
Hayward, Wis. (AP)—Bedding for mink is the by-product of a local factory's manufacture of medical swab sticks. The Hayward Wood Products Co. uses white birch to make swab sticks and found it had a lot of shavings left over. Then a mink rancher tried the shavings as bedding for his mink. Now the wood company has more orders for mink bedding than the swab machines can produce. So it is planning to install another machine—just to turn out shavings. The jurist who drafted the Ordinance of Secession in the Civil War was a Mississippian named Lucius Quintus Cincinnatus Lamar. Later he was an associate justice of the Supreme Court.

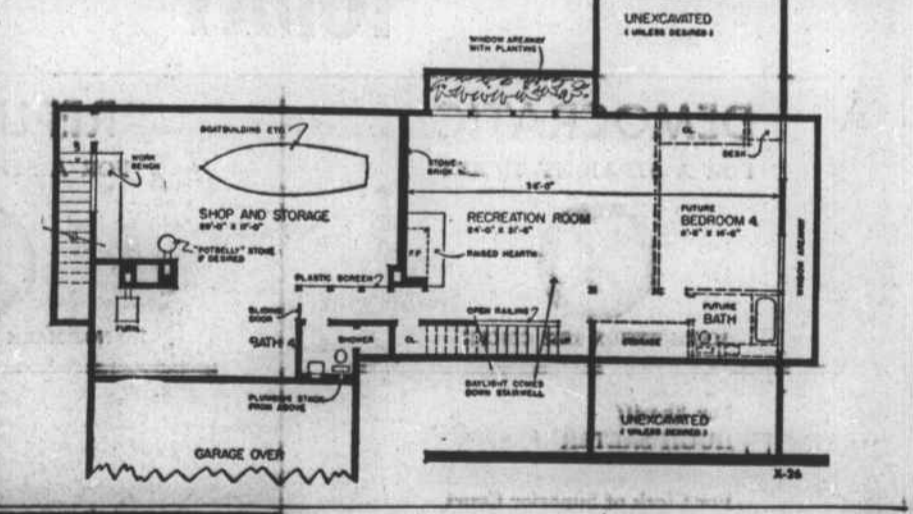
Call PA 6-5088 For Automatic Delivery
J. M. DAVIS Distributor
Texaco Products Morehead City

Send This Coupon
THE NEWS-TIMES
Enclosed is 35 cents. Please send me a copy of the study plan for The House of the Week, Design X-26
NAME (Please Print)
STREET
CITY STATE

You can take this study plan to your bank or other mortgage lender and to your builder and get rough estimates on the cost of construction in this area, as well as an idea of the relation of the cost to your budget. With this information you will know whether you will want to proceed with construction by ordering working blueprints direct from the architect and asking for bids for the work. You can get a study plan for The House of the Week by filling in your name and address on the coupon on this page and sending it with 35 cents to this newspaper. This study plan shows each floor of the house together with each of the four elevations, front, rear and sides of the house. It is scaled at 1/4-inch per foot. It includes a guide on "How to Get Your Home Built."



The floor plan of the main level, in the version without a basement, is shown above. The basement version, adding a fourth bedroom, recreation room, two baths and a work or hobby shop, is shown below.



West Liberty, Ky. (AP)—The Mrs. Jessie Gevedon, he's still Rev. C. F. Testerman of Foster, "baby brother." Mrs. Gevedon is Ohio, is 91. But to his sister here, 106.

REDDY MIX by DAVE LINDSAY
CARTERET CONCRETE CO.
FOR COUNTY COMMISSIONERS

BUILD PATIO, STEPS, WALKS AND TERRACES with...
CONCRETE MASONRY
ATTRACTIVE INEXPENSIVE PERMANENT
DO IT TODAY—THE CONCRETE MASONRY WAY
MOREHEAD BLOCK & TILE CO., INC.
Phone PA 6-3970
NEW BERN HIGHWAY MOREHEAD CITY, N. C.

TRY SEARS CATALOG SALES
For All Home Improvement Needs
SEARS
Catalog Sales Office
Phone PA 6-5181
915 Arendell St.
Morehead City

for your home... LUMBER BUILDING MATERIALS
Repair Now!
Winter's on its way! Don't be caught cold. Start right now to get your home in shape for the freeze'n season. Before temperatures drop, paint up, spruce up and make those needed repairs now!
SAFRIT LUMBER CO.
EVERYTHING FOR BUILDING, REMODELING
Lennoxville Rd. Phone PA 8-3843 Beaufort, N. C.

FOR CONTINUED GOOD GOVERNMENT
VOTE DEMOCRATIC TODAY
VOTE FOR
A. H. JAMES Clerk of the Superior Court
HUGH SALTER Sheriff
ODELL MERRILL Register of Deeds
DAVID MUNDEN Coroner
D. G. BELL House of Representatives
MOSES C. HOWARD
S. A. CHALK JR.
HARRELL TAYLOR
DAVID YEOMANS
GASTON SMITH
FOR COUNTY COMMISSIONERS
VOTE DEMOCRATIC