

# THE YANCEY JOURNAL

Formerly The Yancey Record

VOL. 2, NO. 16

THURSDAY, APRIL 19, 1973

10¢

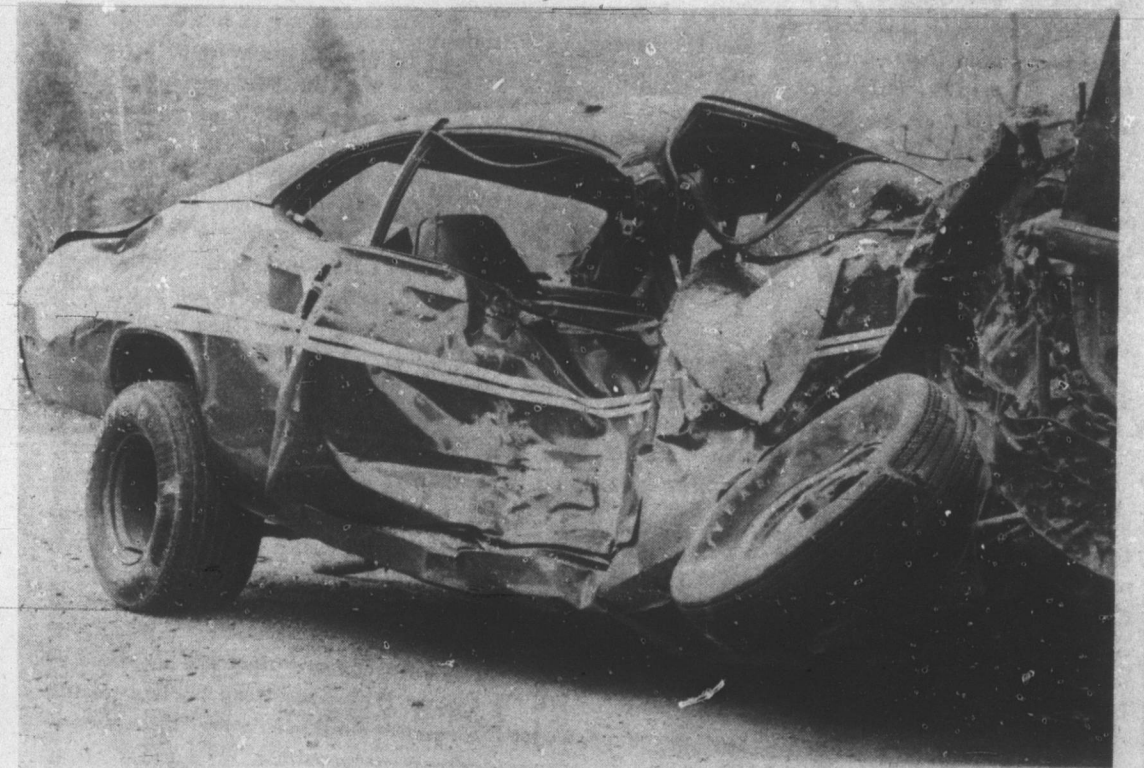


Directors And Officers Of The Yancey County Chamber Of Commerce

## C Of C Lists Achievements

The annual dinner meeting of the Yancey County Chamber of Commerce, held last Friday evening at the East Yancey High School, presented impressive evidence of the role played by the Chamber in promoting progress in the county.

Featured at the affair were a succession of awards to students and organizations, the election of new Chamber directors, and the display of numerous exhibits showing accomplishments and progress in Yancey County. President Mack B. Ray, who presided, stressed the primary objective of the Chamber, which he said is best described as a broad effort to make our county a better place in which to live. Altogether a spirit of achievement and satisfaction with a job well done prevailed at the affair (Cont'd on page 3)



Wreckage Of Late Model Car In Which Fender Youth Was Killed

## Local Youth Dies Of Injuries From Fatal Car-Truck Collision On Hwy 19E

A head on collision early Monday morning on highway 19-E resulted in one fatality. Carl Fender, 18, of Bee Log Community was pronounced dead on arrival at Yancey Hospital in Burnsville.

According to H. M. Kendall of the North Carolina Highway Patrol, the investigation is still incomplete, but Fender was apparently traveling at a high rate of speed when he lost control of the late model Dodge he was driving. He crossed the center line in a curve and collided

with an oncoming vehicle. The 1968 one-ton Chevrolet was driven by Edd Howell, 28, of Route 4, Burnsville. Howell was treated at Yancey Hospital for minor injuries and released. The Fender vehicle was a total loss, and damage to the Howell truck was estimated at approximately \$1,200.

Fender was the son of Mr. and Mrs. Duke Fender of Bee Log. He was a 1972 graduate of Cary River High School and was employed at the Burlington Mills blanket plant in Asheville.

Surviving in addition to the

parents are three sisters, Mrs. Larry Ray McIntosh of Burnsville, Linda and Elaine Fender of the home and one brother, David Fender of the home; the paternal grandparents, Mr. and Mrs. Ragan Fender and the maternal grandparent, Mrs. Viola McCurry all of Burnsville Rt. 4. Funeral services were held Wednesday at 2:00 p.m. in the Bald Mountain Free Will Baptist Church. Rev. Roscoe Briggs Jr. and Billy Joe Ponder officiated and burial was in the Fender family cemetery.

## Audience Applauds School Plans At Chamber Dinner

As one of the highlights of the annual Chamber of Commerce dinner last Friday night, Yancey School Board Chairman Claude Vess explained the need for a new central high school in this county and how it would be funded. He then introduced Jim Padgett of Padgett and Freeman Architectural firm, which is studying two proposed sites for a new high school.

Vess explained how a new \$2,000,000 high school which could house 900 to 1000 students could be funded without a tax increase for the people of Yancey County. Presently the county has \$338,000 available for school construction from the 1963 State Bond Referendum, and \$480,000 will come from the Appalachian Regional Commission. An additional sum of \$500,000 would come from a County Bond Election scheduled for May 22. This would give the county a total of \$2,318,000 for the project. Vess added that this total will also allow for the renovation of all the elementary schools in the county.

The School Board Chairman emphasized that there will be no tax increase if this bond is approved. He said that the County Commissioners have repeatedly said that the bond can be paid off with revenue from the one-cent sales tax which is coming into the county at a rate of almost \$10,000 each month and is likely to increase. To date, the county has collected \$173,577 since the one-cent sales tax went into effect.

In his explanation of why the county needs a new central high school, Vess emphasized six major points:

(1) There is a definite need for a broader curriculum. He pointed out that 45 courses are offered at each of the two high schools. With a new central school, more than 75 courses could be offered, including

band and choral music programs.

(2) The drop-out rate of 41.3% as compared to the state average of 32.5%, indicates that nearly half of the seventh grade students never graduate from high school in Yancey County.

(3) Because of lack of facilities only 30 percent of those who want to take the vocational courses can do so. Expanded facilities would mean 100 percent participation by those who wish to take the course, and that four more vocational teachers could be hired.

(4) With the construction of a new central high school, the two existing high schools would be used as middle schools for 7th and 8th grade students and would offer a much broader program for this age group.

(5) The central high school would also serve as a "community school," available to the community in general for all types of programs, gatherings, etc. Vess said this would include an auditorium with permanent seats and proper acoustics, something that is certainly needed in the county.

(6) A new central high school would also mean improved athletic and physical education programs for both the high school and the two middle schools.

The two sites located one-half mile east of Riverside have been studied by the engineers and architects from Freeman and Padgett. Vess pointed out that both sites are centrally located.

In conclusion, Vess said that the financial condition of the county has never been better for undertaking this badly needed project. The School Board, he said, has confidence in the people of the county and feels they will back the upcoming bond referendum.



Sportsmanship Award Winners With Mrs. Charles Wesson Who Presented Trophies

## CAP Members Spot Aircraft Wreckage; Ground Crew Recovers Body Of Pilot

By Kenneth Laughrun  
The wreckage of a Cessna 182 in which one person was killed was spotted Saturday, April 14 at 4:15 p.m. in an air search by members of the Mountain Wilderness Civil Air Patrol Squadron.

1st Lt. Ray Miller and 2nd Lt. (Sheriff) Kermit Banks located the crash of the single engine plane at the head of the Cattail section of Yancey County about five miles from Mt. Mitchell. The elevation of this particular peak is between five and six thousand feet.

The plane had been missing since March 28, when the pilot left Eleanor, West Virginia on a business trip. The pilot, identified as Amos Jasper Waddell, 50, of Charleston, West Va., was en route to Franklin County Airport in Georgia.

A ground crew made up of CAP members, the Yancey County Radio Patrol, and guides from Pensacola familiar with the mountainous area left for the crash at 6:45 p.m. The men drove four-wheel drive ve-

hicles eight miles over abandoned logging roads and railroad grades. Laurel thickets, rock cliffs and snow, still present at the high elevation, slowed down the ground crew as they proceeded on foot the final two miles to the crash site.

The ground crew found the wreckage of the single engine aircraft scattered over a large area when they reached the site at 10:00 p.m. The body of the pilot, the only person aboard, had been thrown about 25 feet from the wreckage. It took the ground crew until 4:30 a.m. Sunday to get the body from the crash site to Holcombe Brothers Funeral Home in Burnsville.

According to CAP spokesman, the first search efforts in Yancey, Mitchell and Madison Counties were conducted when the plane was reported missing, but low clouds, high winds, rain and snow prevented a thorough search of the higher elevations. The search extended into a six-state area.

Favorable weather during the weekend permitted the thorough

search of the area Saturday in conjunction with North Carolina Wing (SARCAP) Mission which led to the location of the missing aircraft. Twenty aircraft from western North Carolina

(Cont'd on page 3)

## NW Financial Earnings Report

Northwestern Financial Investors, a real estate investment trust based in Charlotte, North Carolina, reported earnings of 4 1/2¢ per share of beneficial interest for the first quarter of 1973. On April 9, 1973, the Trusts declared a dividend of 40¢ per share payable May 17, 1973, to shareholders of record April 25, 1973. For the comparable period in 1972, the dividend was 20¢ per share.

The Trust reports continuing growth in its investment portfolio with improving yields and steadily increasing use of its bank credit. The outlook for the coming quarter is excellent.



Howell Truck Was Heavily Damaged In Fatal Head-On Collision

## Farmers Home Administration Announces Recent Fund Increase For Farm Loans

Farmers Home Administration announced today that funds for FmHA real estate and farm operating loans were recently increased and will be available for the remainder of this fiscal year ending June 30, 1973.

FmHA State Director James T. Johnson, reported that an additional 170 million dollars has been made available for loans to farmers for annual operating expenses, and for financing purchases of farm equipment, livestock and other capi-

tal needs on terms up to seven years.

These funds were made available to help fill the need for operating money arising from the termination of the emergency loan program. Johnson said that as a result of rains and of flooding, both last year and this year, North Carolina has about half its counties eligible for emergency loans and will receive a greater proportion of the available operating funds. He further stated that farmers

who were considering purchases of farm equipment or livestock in the near future would be wise to consider these purchases before June 30, while funds are in adequate supply.

Johnson reported that funds for long term real estate loans for land purchase, farm development, refinancing and other similar purposes were also adequate for the remainder of the fiscal year. These loans are at 5% up to 40 year terms and have

(Cont'd on page 3)