



KRISTI (L.) AND KIM

All-Tournament Trophies Awarded

KRISTI ROBINSON, who with Betty Pritchard (not pictured) captains the East Yancey girls basketball team, and Kim Yuziuk, another player, hold trophies they won as "All Tournament Players" during the Cane River Invitational Tournament. Kristi, whose picture appeared last week with an incorrect name, was one of the outstanding Panther players for the 1979 basketball season.

Praised By Seniors

Elderhostel Is Unique Program

If you are 60 or over, have a friend, parent, or grandparent 60 or over, then a unique educational program called Elderhostel is available to you and other elder citizens this summer at nine colleges and universities throughout North Carolina.

Elderhostel combines the adventure of hosting with the pursuit of knowledge into an exciting week of

educational activities. Started in New Hampshire in 1975, the program now includes schools in 33 regions stretching from coast to coast. Campuses making up the North Carolina network of Elderhostel include: Appalachian State University, Mars Hill College, UNC-Asheville, UNC-Chapel Hill, UNC-Charlotte, UNC-Greensboro, UNC-Wilmington, Western Carolina University and Winston-Salem State University.

During the summer each school will offer a series of week long, non-credit college level courses taught by regular faculty members. There will be no exams, no grades and no required reading. Included are such subjects as Our Marine Environment, Recreational Theatre, The True Self: From Freud to EST, The Many Sides of Thomas Jefferson, and the Life and Literature of Thomas Wolfe, to name just a few. The fee for one week, which includes tuition, campus housing and dining will be \$115.00 for all participants.

In addition to such courses each campus offers a wide variety of extra-curricular activities such as concerts, plays, music programs, nature hikes, together with recreational sports such as golf, tennis and swimming.

"The enthusiastic response that elder citizens have given Elderhostel to date indicates that a large number of our retired citizens welcome the opportunity to stay active, to travel and to learn," said Bob Wagoner, North Carolina Director of Elderhostel. "Elderhostel contradicts the rocking chair image of growing old. It is a program for people who are going somewhere, not in terms of physical movement, but in the sense of reaching out for new experience."

For more information about Elderhostel interested parties should contact Bob Wagoner, 204 Abernethy Hall, 002A, Chapel Hill, N.C. 27514, (919) 933-1123.

Burnsville Native In Publication

Robert R. Tilson has been listed in the 1979-80 edition of Marquis' Who's Who in Finance and Industry. He is Director of Corporate Development for Sundstrand Corp., one of the Fortune 300 companies with 1978 sales of more than \$730 million.

He is responsible for mergers and acquisitions, long range planning and international affairs. Sundstrand's businesses are high technology and include power transmissions and fluid handling, aerospace components and air comfort products. In the past 5 years, Mr. Tilson has acquired or divested over \$80 million of assets for Sundstrand.

In addition to membership in a number of industry and professional groups, Tilson is immediate past president of the Chicago Chapter of the Association for Corporate Growth, an international organization of professionals engaged in corporate finance and planning, as well as mergers and acquisitions.

Mr. Tilson, his wife Joan

and three sons reside in Lockford, Illinois. He is a native of Burnsville, N.C., and is the son of Lena R. Tilson.

Shade Is Intern In Radiology

Ben Eric Shade, son of Mrs. Gwendolyn Shade Griffith of Route 1, Burnsville, has been accepted at Moses Cone Hospital School of Radiology, Greensboro, N.C. for his internship in radiology.

Ben will complete his pre med course at Greensboro College in May, 1979 and will begin his internship in July. After 24 months internship he will graduate with a B.S. degree in Biology and a B.I. degree in Radiology.

Ben graduated from East Yancey High School in 1974. He attended Lees McRae College from which he graduated in 1976 with a degree in biology.

After completing his internship at Moses Cone Hospital, Ben will be a radiologist. Out of a class of 110, Ben was one of 30 chosen to intern at Moses Cone Hospital.



Junior Recital Saturday

A Junior Recital will be performed by Bill Gouge at the Presbyterian Church, Burnsville, at 8 o'clock p.m. on Saturday, March 24. The public is invited to

hear Bill, the son of Mr. and Mrs. Edd Gouge of Burnsville, play works of Mozart, Schubert and Chopin, among others.

Local WCU Grads:

Alumni Organize

Local graduates of Western Carolina University met Wednesday, March 14 to organize a local Alumni Chapter to serve Avery, Mitchell and Yancey Counties.

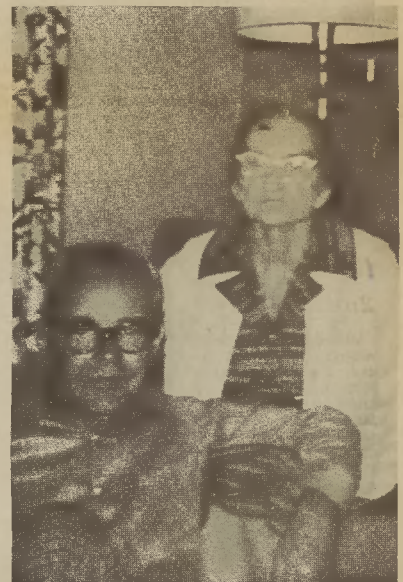
The evening was highlighted by the presence of Mrs. Annie Felts, a resident of Mitchell County who graduated from WCU over 50 years ago (Class of '28). Mrs. Felts is now retired, after having served as a public school teacher for 42 years. At the meeting she commented that "Western Carolina University had prepared her well for public school teaching," and as she looked around the room, she recalled having taught the parents of many of the people present.

At the meeting Jim Manring, WCU Director of Alumni Affairs, made a presentation on how to organize an alumni chapter and gave his encouragement and support for the local effort. Manring also discussed recent progress of the University and answered questions about various campus activities taking place at the school, located in Cullowhee. Suggestions as to how WCU could offer some local educational services were also entertained.

The group elected an interim President and Board of

Directors who will meet within the next month to organize plans for a membership drive and meeting to be held in May. Dr. H.F. "Cotton" Robinson, WCU Chancellor and native of Bandana in Mitchell County will be guest speaker for the May meeting in which an attempt will be made to get as many of the area's 170 WCU Alumni to

attend as possible. The group elected Roy L. Greene of Avery County as its interim President. The Board of Directors for the chapter will be Mike and Terry Manis and David Huskins, Avery County; Larry and Dianne Caudill, Gene Morgan, Bill Biddix, Hal Harrison, and Annie Felts, all of Mitchell County; and Dennis Howell, Yancey County.



PEARL RAMSEY BUCK, shown here with son, Charles, will be 100 years old March 22.

To Celebrate 100th Birthday

Pearl Ramsey Buck will celebrate her 100th birthday on Thursday, March 22, with her family at the home of Hope Buck who resides near the home of the original Buck homestead.

Pearl was born at Mars Hill, N.C. on March 22, 1879—the daughter of O.H. and Ellen Keith Ramsey. She attended Mars Hill College, and was

married on November 6, 1901 to David M. Buck of Johnson City, Tennessee.

They moved to Bald Mountain in Yancey County in 1902, where Mr. Buck was active in a large lumber company operating in the area. The project included 13 miles of spur line from C&O Railroad at Hunteale, N.C. to Bald Mountain—a distance of 13 miles. The Bucks continued to live in the same locality after the lumber company closed.

There were eight children in the family, five of whom are still living. David M. Buck, an outstanding leader in both community and state affairs, died in 1939. Mrs. Buck has 11 grandchildren and fourteen great grandchildren.

Children are: Dr. David M. Buck, Jr., deceased, Charles G. Buck of Asheville, Hope Buck of Burnsville, Mrs. Ruby B. Adams, Roxboro, N.C., Mrs. Kathrine Cherry of Hickory, Paul Buck, deceased, Mrs. Faye Blake, deceased, and Alma Buck, Burnsville.

YANCEY THEATRE

Show Times 5-7-9pm
682-2531 Burnsville \$1.00 Children \$2.00 Adults
NOW SHOWING

ICE CASTLES

PG
ORIGINAL SOUNDTRACK ALBUM AVAILABLE ON ARISTA RECORDS AND TAPES

Robby Benson co-stars in ICE CASTLES as Lexie's home town boy friend, a schoolboy hockey star who flunks a try-out in the pro's but wins the toughest test of his young life when Lexie's world turns dark.

It's a magnetic performance by one of the screen's most exciting new stars. And the hockey sequences are as realistic — in their own rugged way — as the figure skating scenes are beautiful.

Let Us Capture The Color Emotion Ceremony Action and Joy Of Your Wedding

Storytelling Photography
by Brian Westveer

Box 444
Spruce Pine, 28777 765-7242

Discover **BEN FRANKLIN**
We bring variety to life!

SAVE! SAVE! SAVE!

On LUCITE® PAINT

SAVE \$1.00, \$3.00, \$5.00 or more!

Big Savings! No Limit!

Get a STORECHECK* by mail, good for any merchandise in our stores, with proof of purchase and an official application from our display.

LUCITE Wall Paint

Sale Price — \$6.99
Less Du Pont STORECHECK* \$1.00
YOUR NET COST \$5.99

LUCITE House Paint

Sale Price \$8.99
Less Du Pont STORECHECK* \$1.00
YOUR NET COST \$7.99

LUCITE Enamel

Sale Price \$1.47
Less Du Pont STORECHECK* \$1.00
YOUR NET COST 97¢

DOORBUSTER SPECIAL!

BIG SAVINGS ON OTHER LUCITE® PAINTS ALSO!

BEN FRANKLIN
Banks Family Square