

The CHEROKEE SCOUT

and Clay County Progress

Murphy, North Carolina, Sunday, Sept. 8, 1963

Published Weekly

SECOND CLASS POSTAGE PAID AT MURPHY, NORTH CAROLINA

Search To Go On Until Trapped Miner Is Found

Condition Critical

Sheriff Gunned Down

MURPHY—Cherokee County Sheriff Claude Anderson was listed in critical condition here early Sunday morning after being shot five times in the County Courthouse about 10:40 a.m. Saturday.

Milt Anderson, 69, a distant cousin of the sheriff's, surrendered to law officers here late Saturday afternoon and confessed to the shooting.

Eye witnesses said Sheriff Anderson placed Milt Anderson under arrest outside

the sheriff's office in the courthouse Saturday morning, a scuffle followed, and Milt Anderson pulled his pistol and shot the sheriff five times, in both arms, the chest and abdomen.

After the shooting, Milt Anderson walked out of the courthouse, reloaded his pistol, and hired a taxi driven by Jake Stiles to take him to wooded spot on the Dickey Road, some 12 miles west of Murphy.

Mr. Stiles said he did not know that Anderson had shot the sheriff until they were headed out of town.

A massive manhunt was organized for the assailant, involving deputies, the State Highway Patrol, Prison officials, and other state and federal lawmen.

The trail led to the home of Garlee Rich, where Milt Anderson ate dinner. Mr. Rich said he knew that Anderson had shot the sheriff, but he did not try to stop him when he left.

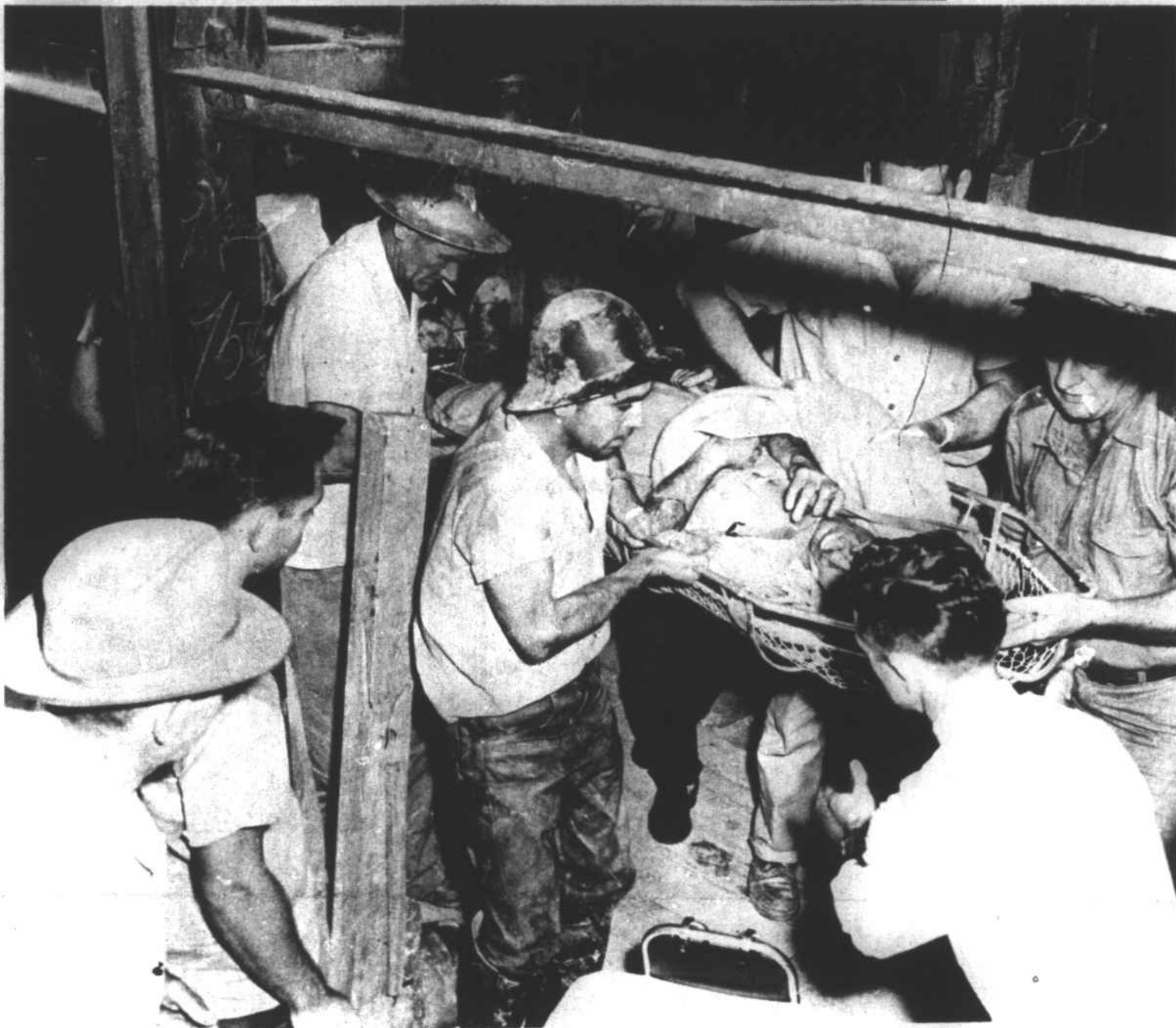
Late in the afternoon, relatives of the assailant agreed to find him and get him to agree to turn himself in, if he was guaranteed safety.

Law officials said Milt Anderson had a long record of prior assaults.

He was brought to the county jail to surrender by a cousin, J.E. Anderson.



Sheriff Anderson



MINER RAY STEWART WAS BROUGHT to the surface at 6:15 p.m. Saturday after being trapped for almost three hours in the 330 foot shaft on Mine number 3 at The Hitchcock Corporation, a Murphy talc mining operation hit by a cave-in at 3:30 p.m. Rescue workers were fellow

miners and members of the Cherokee County Rescue Squad, Mr. Stewart's son who is also employed at the mine joined the rescue operation. Mr. Stewart was administered oxygen before being brought up. He was taken to Murphy Providence Hospital where his condition was listed as serious at 2:00 a.m. Sunday (today)

MURPHY—A search for miner Carl Dockery, trapped in a cave-in Saturday, at 3:30 p.m., at The Hitchcock Corporation here, continued into the early morning hours Sunday.

Miner Lewis L. Pope, 49, who had been brought out of the mine shortly after the cave-in occurred, died in a Murphy hospital at 1:10 a.m. Sunday from severe head injuries received in the accident.

Two others injured in the cave-in were listed in serious condition, and a third miner's condition was given as good.

The two listed as serious were: Beaufort Bryant, who was rescued soon after the accident, and Ray Stewart who was found by rescue workers around 6:15 p.m. Saturday.

In good condition was miner Wilford Beavers.

What caused the disaster was uncertain.

Hitchcock owner, Francis C. Bourne, Sr., 69, is personally leading the search for Dockery. All three of the mine's shifts were on hand to join in the search.

The cave-in occurred at Hitchcock's mine number three, which is 330 feet deep. Tons of debris plunged into the mine's work area.

Officials were unable to say what the chances were for finding Dockery alive, but Mr. Bourne said the search would continue until he was found.

Mr. Dockery's address is Murphy Rt. 1. He is 58, and a foreman who has worked at Hitchcock for nine years.

Mr. Pope, 49, is survived by his wife and five children, Louise, Jack, Linda, Jo Ann, and Betty Sue.

EXCLUSIVE Scout Photos

by Freddie Davis, Jack Owens, and Todd Reece.



MILT ANDERSON, CHARGED with shooting Cherokee County Sheriff Claude Anderson, is shown here after he surrendered to officers at the county jail.



THIS BLOODHOUND, brought into the search for Sheriff Anderson's assailant, tracked the suspect to the Garlee Rich home below Murphy, off Highway 64.



OFFICERS AIDING IN THE HUNT for sheriff's assailant surrounded the home of Garlee Rich after receiving tip that Milt Anderson stopped there for lunch.



FRANCIS C. BOURNE, SR., owner of The Hitchcock Corporation, Murphy talc mining operation hit by a cave-in Saturday, is shown here entering elevator for descent

into mine where Carl Dockery is trapped, to lead rescue operation. His son, Francis C. Bourne, Jr., shown at right, directed operation on the surface.