

"MAIN STOP ON BASIN BEAT"

Serving Homes Of The Basin For More

Than 60 Years

SMELTER STORE

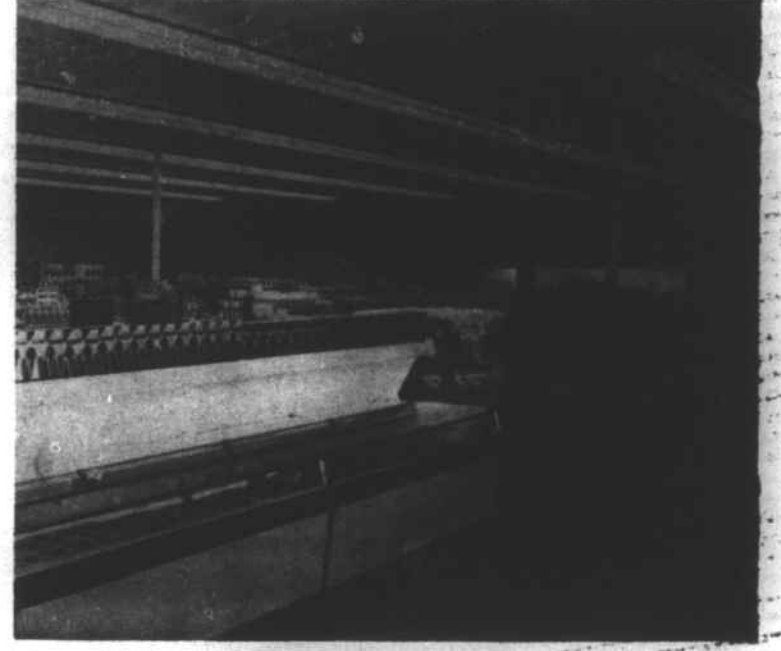
Congratulations To The Cherokee Scout On Its 75th Anniversary



Checkout Counter



Furniture Department



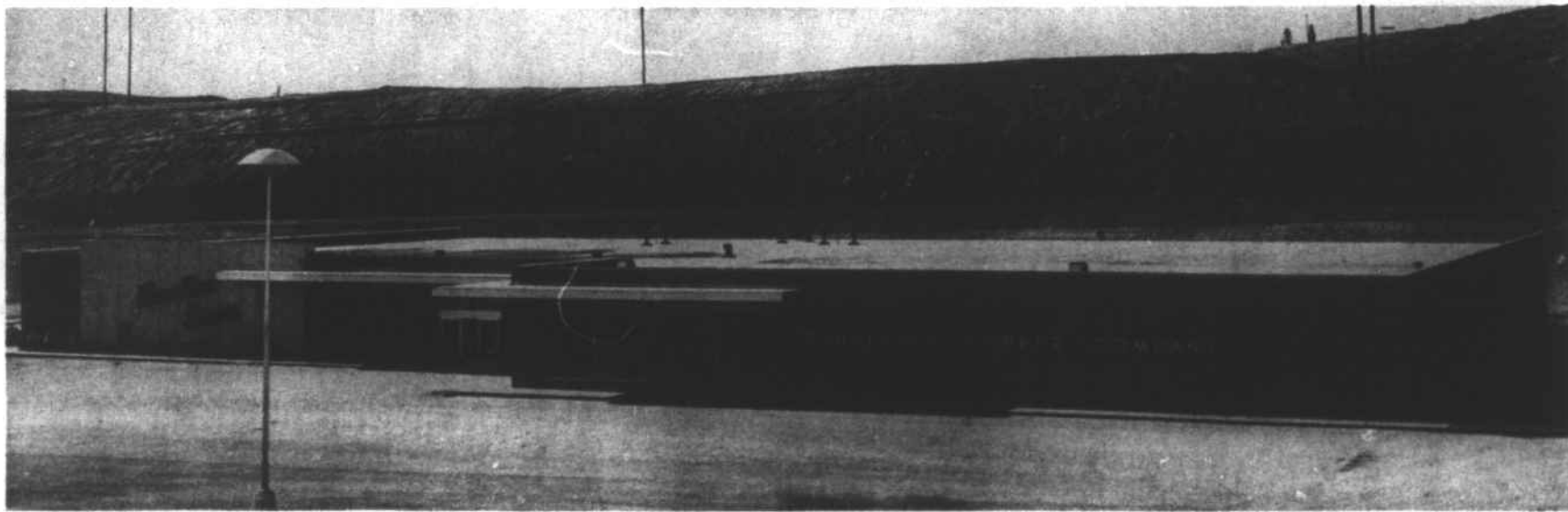
Grocery Department



Men's & Ladies Clothing Department



Gas Pumps



Overall Outside View

We're proud of our heritage, too, because, like THE CHEROKEE SCOUT, our business was born in the late 1800's.

For us, that birth took place at the turn of the century. That's when Tennessee Copper Company began mining and smelting operations in the Basin.

Now, the history of copper mining here goes back to the mid-1800's, and to the time when---for a quarter of a century---men working for a number of firms

mined ore and hauled copper to railheads at Dalton, Georgia, and Cleveland, Tennessee.

Several days were needed to make one of these journeys over the twisting mountain roads---somines were closed during the 1880's. With the coming of the railroad to the Basin in 1890, mining started anew.

Still a sparsely settled area, there was a need for merchants to serve these miners and smelter workers. By 1905, five industrial stores had

been built. Most were located near mine shafts, but one was located next to the Copperhill smelter --- and that's how we got our name.

The Smelter Store was moved to a building in downtown Copperhill in 1925, where we carried on our business until fire destroyed fixtures, stock, and the building thirty-three years later.

In December, 1958, we moved into a new building on the Copperhill-to-Ducktown highway, within view of Tennessee Copper's main plant.

Today, from our front door, we see an industrial complex much different from the one that started operations sixty-five years ago. For one thing, there are several plants making sulfuric acid, now the company's number one product.

Copper continues to be a major product, along with iron sinter (a high grade iron ore sold to steel mills).

There is a network of buildings, too, where a wide variety of industrial and agricultural chemicals

are made.

As for the company's merchandising business, the trend in recent years has been toward consolidation of stores. Those at Isabella and Ducktown, each one more than 60 years old, have merged with Smelter Store since the opening of our new building almost six years ago.

Now we are the only company merchants in the Basin. But the accent among our 40-odd employees is still on customer service.

We have plenty of parking space, over 35,000 square feet of merchandising area, and the latest styles in display fixtures.

We invite you to become our customer. . . visit our grocery and variety departments. . . see our lines of ladies' and men's clothing. . . shop our furniture and hardware departments.

Let us be your one-stop shopping store.

SMELTER STORE

COPPERHILL, TENN.