

Power Company To Construct New Generating Plant Soon

Louis V. Sutton, President, Makes Announcement of Reserve Resource Construction Program.

Raleigh, Jan. 1.—The Carolina Power and Light Company plans the immediate construction of a 40,000 horsepower steam electric generating plant to cost approximately three million dollars, J. V. Sutton, president and general manager, announced this week. Mr. Sutton said his company has had ample power resources at all times for the growing needs of the territory it serves in North and South Carolina, and that the construction of an additional electric generating plant is in line with the long established policy of his company to look ahead and have available an adequate source of dependable power to meet anticipated increased demands.

During 1940, he pointed out, the Carolina Power and Light Company sold, from its surplus supply, 180 million kilowatt-hours of electricity to a vital defense industry located outside the company's territory. This was done after supplying all requirements of its own customers, which included many industries necessary to the national defense program now under way.

Ready In Early 1942

The new plant is planned to be completed and placed in service by the spring of 1942. It will be located somewhere within the Raleigh load area. An order for the steam turbine-generator unit has been placed. Orders for the boilers, condensers and other equipment will be placed shortly, Mr. Sutton said. The turbine is to be the latest and most improved type. It will be designed for 350 pounds steam pressure and 900 degrees Fahrenheit steam temperature. The generator will be hydrogen cooled. The boiler will be of the semi-outdoor type and designed to make about 300,000 pounds of steam per hour. If the new plant is placed at the Cape Fear steam electric generating plant, located 18 miles east of Sanford, N. C., it will double the installed generating capacity there.

At the present time the company has ten hydro-electric and two steam generating plants, located in the Carolinas, together with contracts for the purchase of firm power from two other electric utilities. This gives the company an aggregate available power supply in excess of 425,000 horsepower.

Plenty of Power

The company has had more than ample power resources for all needs in its territory. Mr. Sutton pointed out that late in 1933 the company lost its largest cus-

Akron 'Blackout'



A fire at the Lowenthal Rubber Company in Akron, Ohio, caused a blackout of the city. The firm is in the reclaimed rubber business. Damage was estimated at \$50,000.

tommer, the Tennessee Public Service Company, which served the city of Knoxville, which loss resulted in the Carolina company having a large surplus of power. The company sold the Knoxville company approximately 150 million kilowatt-hours during the last twelve months it served them.

The new steam plant, when completed in early 1942, should make available in excess of 200 million kilowatt-hours a year. Since the present Carolina Power and Light Company was created in 1926 the company has greatly extended its generating, transmission and distribution facilities so as to at all times keep ahead of the electric power demands of the people in the territory it serves, Mr. Sutton added.

With the assistance and backing of its holding company, the Electric Bond and Share Company, which made possible the formation of the present Carolina Power and Light Company in 1926, as well as the formation of the predecessor Carolina Company in 1908, the company, within the past 16 years, has constructed its present steam electric plant at Cape Fear with an installed capacity of 40,000 horsepower; the Tillery hydro-electric plant on the Pee Dee River near Mt. Gilead, 83,000 horsepower; the Waterville hydro-electric plant in Haywood county near the Tennessee line, 145,000 horsepower, and contracted with the Lexington Water Power Company in South Carolina for approxi-

mately 75,000 horsepower.

In addition to its holding company connections, the company has 8,800 preferred stockholders, more than three-fourths of whom live in the Carolinas.

Today, Mr. Sutton added, the company has a large interconnected system serving more than 118 thousand electric customers in the two Carolinas. The transmission system is connected with the transmission systems of the six neighboring electric utility companies. It is felt, Mr. Sutton added, that such a system has enabled his company to be prepared now and in the future to do its part in the national defense program by having an adequate supply of power available for all anticipated demands in the territory it serves.

Democratic Headquarters Moves To The Mayflower

Washington, Jan. 1 — The Democratic National Committee will move its national headquarters bag and baggage this month from its cramped, eight-room suite in the National Press Building to an air-conditioned, 25-room layout in a large downtown hotel, The Mayflower.

This was announced today as it became known that the Democrats will forego their annual Jackson Day dinner rallies on January 8 in favor of a Roosevelt "Victory Dinner" in February or March, because the earlier date comes too close to the January 20 inaugural ceremony.

The only reason given by party officials for the transfer of headquarters was that the committee staff has been pressed for roomier quarters for year. What the increased cost would be, no one would say, but it was certain to be several times the \$1,000 or so month the committee has been paying in its present building. Some party men took it as a sign of increased party activity,

Commanders of Four U. S. Air Districts



The four major generals in command of the four air districts into which the United States has been divided are shown here. Top, left, Maj. Gen. E. K. Young, commanding general of the Southeast air corps district. Top, right, Maj. Gen. John E. Curry (S. W. district); bottom, left, Maj. Gen. James Cheney (E. district); bottom, right, Maj. Gen. Jacob Fickel (S. W. district).

or, at least of an intention not to let organization work lag as it so often does between campaigns. With the Republicans aiming particularly at new gains in Congress in the 1942 elections, these officials said, the party in power could not afford to rest on its laurels.

The new national chairman, Edward J. Flynn, is believed to have been instrumental in obtaining a four-year lease on the sumptuous hotel headquarters. Flynn, who discussed the matter with President Roosevelt earlier this week, also has taken an apartment in the same hotel.

He will move here from New York January 1, another indication of greater party activity despite the post-election lull. Flynn will spend most of his time here after that. Heretofore he has vis-

Poultry Feed Formulas Listed In New Circular

A new publication which lists approved feed formulas for poultry has been prepared by the State College Extension Service, and F. H. Jeter, agricultural editor at State College announces that it is now ready for free distribution to interested citizens of North Carolina.

"The bulletin fills a long-felt need," he said, "because poultrymen, farmers and millers are constantly requesting formulas for mixing poultry feeds from the Poultry Extension Office."

The new publication is Extension Circular No. 245, "Feed Formulas for Poultry." It is available free upon request, by name and number, to the Agricultural Editor, N. C. State College, Raleigh.

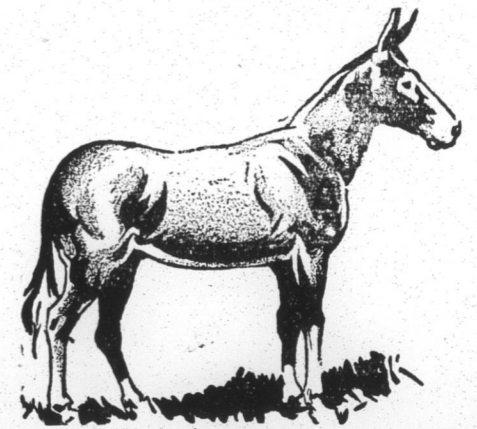
Included among the formulas are mixtures of mash, grains, and

concentrates for starting, growing, laying and breeding chicks. The answer to the question: What are the nutritive requirements of chickens and turkeys? is also contained in the circular. A summary is given of the protein, minerals, and vitamins needed of poultry.

C. F. Parrish, C. J. Maupin, and T. T. Brown, Extension poultry specialists of State College, prepared the text for the publication. As a preface to the 12-page booklet, they wrote: "This bulletin is prepared primarily for farmers, poultrymen, feed mixers."

"Any company or individual is at liberty to prepare feed in accordance with the formulas contained in this bulletin. However, the North Carolina Agricultural Extension Service does not supervise the manufacture or mixing of any feed and, therefore, does not accept any responsibility for the results secured, or for the claims made by feed manufacturers."

Kentucky Mules



Already broke, ages 2 to 6 years old, weighing from 800 to 1400 lbs. Also some good Brood mares and some good trade-ins.

Give us a look before you buy. Cash or credit.

CREEDMOOR SUPPLY COMPANY

Back Of Winstead Warehouse
E. B. BRAGG

1891  1941

Best wishes to the Peoples Bank on Its Golden Anniversary

This institution has served the county well and has every reason to feel proud of its record.

To all of the officials and directors we extend Congratulations

KIRBY BROS.
Person County Times



The Peoples Bank
Roxboro, N. C.

We Are Going To CLOSE ON SUNDAY

From now on the proprietors of this station will close it the entire day of each Sunday.

This will enable us to observe the Sabbath and should help others to do the same.

We will be open late Saturday night
Glenn Bros.
Service Station
T. K. and Stephen Glenn