

## BLACK MOUNTAIN INSURANCE AGENCY

GENERAL INSURANCE and BONDS

Representing Leading Stock Companies

Greene Building

BLACK MOUNTAIN, N. C.

## LITTLE TOWN SQUARE

By Jane Callison

Little Town Square has had three meetings since the last account was written. We are very glad that the attendance has picked up considerably as it has. We urge the members to continue their regular attendance.

Edison Plemmons and Carroll Stevens have been very accommodating by furnishing the square dance music. Again we thank Katherine Rondthaller for the use of her record player. The canteen has a fine collection of records, and more records are added each month.

The chaperones have shown congenial attitude toward all of canteen's "doings" and we appreciate their help and cooperation.

Plans were discussed for some festivity to celebrate Halloween but since most of the young people have their own parties these plans were not carried out.

### SWANNAHOA TEAM DEFEATS BLACK MOUNTAIN BY 7-6

In a game that might well mean the county championship the Swannanoa Warriors defeated the Black Mountain Darkhorses 7-6 Wednesday, October 2, before a capacity crowd.

Black Mountain received the opening kick-off and drove from their 30 yard line down to the Swannanoa 45 yard line where the Warriors took the ball on downs. Swannanoa promptly drove 55 yards to a touchdown. Rainwater scored for the Warriors and the passed to sides in the end zone for what proved to be the winning point.

The game then see-sawed back and forth through the second and third quarters with neither side threatening very seriously.

In the 4th quarter Wing intercepted a Warriors pass on the Black Mountain 40 yard line and raced down to the enemy 30 yard line. The Darkhorse attack would not then be denied. Power plays took the ball to the 4 yard line where "Spooty" Turner slashed off tackle for the score. On the attempted plunge for the point the Warrior line refused to yield and the score stood 7-6 in favor of Swannanoa.

In the waning minutes of the game, Swannanoa intercepted a desperation pass and was threatening when the whistle blew.

The Black Mountain team plays host to the Weaverville team Wednesday, October 31 in the final game of the season. This is to be "Coaches Day"

## FAMOUS SOUTHERN RECIPES

### PLANTATION FRUIT BAR

Thoroughly cream 1/4 cup shortening with 1/2 cup sugar, put in 1 egg, 1/2 cup molasses. Sift together 2 cups flour, 1/4 teaspoon salt, 1/4 teaspoon soda, 1 1/2 teaspoon baking powder, stir into creamed mixture alternately with 1/2 cup milk. Stir in 1 cup nut meats chopped, 1 cup raisins or dates cut up, spread in a greased shallow 8x12 baking pan. Bake 25 to 30 minutes in a moderate oven (350 degrees). When cool cut in

bars 1 in. by 2 in. Amount 48 bars.

To color granulated sugar place sugar on wax paper, add food coloring a drop at a time (no more). Work with tip of fingers until coloring is evenly distributed. One drop will color 2 tablespoons sugar a pastel shade.

To cut butter neatly for table use and keep from sticking to knife fold wax paper over the blade or dip knife in hot water.

## AGRICULTURE

### SELECTIVE CALVES FOR SHOW OR FOR THE BREEDING HERD

In selective calves for show purposes or a breeding herd, primary consideration should be given to their general type and conformation. Deep, wide-bodied, blocky calves with strong level backs, long level rumps, deep full thighs, and short relatively straight legs are considered most desirable. Breeders are also desirous of selecting calves that are smooth and that possess a reasonable degree of natural flesh evenly distributed. Calves selected for the breeding herd should conform to the accepted color markings of the breed they represent.

It is important also to bear in mind the breeding ability and conformation of the sire and dam of a calf and the outcome of previous matings, if there were any. Calves that give indication of developing into desirable show animals should be placed in the feeding barn when from 3 to 5 months old. If, on the other hand, a person is contemplating the purchase of one or more calves, it is advisable to examine available prospects while they are still nursing their dams in order to become acquainted with the development of the calf under the conditions in which it has been placed. Obviously, few calves are afforded the same opportunity for development even on the same farm. Some calves look thrifty mainly because they have had an excellent opportunity to develop. Other calves, with greater potentialities in the breeding herd, may be less attractive because they have not been given an adequate opportunity to demonstrate their maximum ability.

Unless the prospective purchaser has milk available for feeding it is not desirable to obtain a calf until it has been weaned. Calves that do not receive a sufficient quantity of milk from their dams or other from groups of feeders, in which even the selector must necessarily base his decision on type, conformation, and apparent thriftiness.

### GENERAL SUGGESTIONS

When cattle are registered with the respective breed associations some form of identification is necessary to establish accurate records. Some registry associations require tattoo identification on the inside of the ears, which is one of the most permanent means of identification. With breeds having pigmented skins, such as the Aberdeen Angus, tattoo marks are somewhat difficult to read. Neck chains with numbers are generally used with the polled breeds. Ear tags are used by many breeders, but they are not a fully dependable means of identification as tags are sometimes torn out. All cattle in the herd should have some form of identification, and this should be carefully recorded.

The herdsman should have two breeding books—one of pocket size for his daily use and a larger office book in which to record duplicate accounts of all breeding and calving dates. It is also a good plan to make notes of irregularities in breeding and calving, unduly short or long gestation periods, physical abnormalities, and undesirable color markings of calves dropped.

Cost of production per animal is usually higher on herds kept for the production of breeding cattle than in those kept strictly for feeders or fat-cattle production, owing largely to the greater investment per head, the greater amount of labor required, and the more expensive equipment used. Adequate equipment such as barns and sheds is necessary, but it need not be elaborate. Sheds will suffice for almost all classes of beef cattle with the possible exception of cows at calving time during inclement weather. In areas where considerable quantities of silage can be produced, it is advisable to have one or more silos, depending on the number of cattle being fed and the capacity of the silo.

To show animals to best advantage to prospective buyers, the breeder of purebreds should keep herd in a somewhat higher condition and develop the young stock to a greater degree than would be necessary in a grade herd. A large financial outlay in the form of feed and labor will be necessary to accomplish this.

Without an established market for breeding cattle it is advisable for the breeder to advertise his cattle in breed journals and newspapers and by the use of letterheads or by showing at fairs. From time to time it may be desirable to place cattle in consignment sales or have a private sale if there are enough cattle of good quality to warrant it.

Percentage of calf crop, number of calves raised, and death losses have a more direct bearing on production costs than almost any other combination of production factors. The cattle breeder should, therefore, keep nonbreeders out of the herd, maintain his cattle at the proper nutrition level and have sufficient bulls to serve the herd adequately in order to obtain a high percentage calf crop.

The herd should be maintained under sanitary conditions and tested periodically for tuberculosis and brucellosis (Bang's disease) in accordance with State and Federal regulations. In many areas it is necessary to vaccinate young against such diseases as blackleg. Introducing diseases into the herd through failing to take the proper precautions when additions to the herd are made and failing to keep the herd in a healthy condition through proper nutrition and sanitary conditions will materially lessen the income. Attention to such matters often determines whether the enterprise is a success or failure.



### ANNOUNCING:

**New Installation of Radiator Cleaning Machine.**  
Take care of your Radiator before cold weather.  
Corner Cherry and Sutton Streets  
NEXT DOOR TO BUS STATION  
Black Mountain, N. C.

## YOUR CAR NEEDS MORE AND BETTER CARE NOW

Maybe it's on its "last legs", but will still be many months before you can get another.

Let us serve your car so it can continue serving you. We do

**ACETYLENE WELDING - HYDRAULIC BREAK SERVICE - IGNITION & ELECTRICAL WORK WE CLEAN YOUR MOTOR**

**A good running motor must be cool at all times**

We are agents for Radiator Cleaning and Repairing - Tire Recapping and Repairing.

Only Genuine Parts Used When Available

## WILSON'S MOTOR SERVICE

NEXT DOOR TO BUS STATION

Authorized Sales & Service

PHONE 3771 - SUTTON STREET

BLACK MOUNTAIN, N. C.

MERCURY



LINCOLN

## WOODCOCK MOTOR COMPANY

It is a genuine pleasure to welcome this new dealership to the nation-wide family of Ford dealers. This newest member of the Ford dealer organization is well equipped to serve the Ford owners of this community, and to offer Ford Protective Service—which automatically provides your car with expert service attention every thirty days. This periodic Ford service will add immeasurably to the life and smooth operation of your present car. It

is friendly, efficient and economical. Only Authorized Ford Dealers offer it.

The Ford Motor Company has built, through the years, more than 30,000,000 cars and trucks. Today, millions of them are still serving the vital transportation needs of the country. One reason is the stamina and reliability which have been built into every Ford product. Equally important is the excellent service provided by Authorized Ford Dealers.

### You are Cordially Invited!

We are proud of our facilities to service your Ford car or truck. Here, in our service department, we have the skilled mechanics, the modern shop equipment and Genuine Ford Parts to help keep your car operating efficiently and economically for the duration. You are cordially invited to come in and see your new Ford headquarters. You'll find us a friendly organization . . . a good company with which to do business.



30,000,000 CARS AND TRUCKS HAVE BEEN BUILT BY FORD

THE CHURCH OF GOD  
Lakey St. Black Mountain

DIXIE CHAMBERS—  
PASTOR

Services each Sunday—  
Sunday School 10:00 A. M.  
Preaching at 11:00 A. M.  
and 7:00 P. M.

7:00 P. M. Thursday  
night Y.P. E.

WELCOME TO ALL

VISITORS



## HOUSES FOR RENT MONTREAT

Furnished or Partially Furnished

Phone, Write or See  
JOHN H. ROBINSON  
Montreat, N. C.

## MOVING TO LARGER QUARTERS

## ANNOUNCEMENT

WE ARE MOVING TO THE WESTERMAN BUILDING, ONE BUILDING SOUTH OF ROXY THEATRE

## OLD FORT FEED STORE

## SIX HOT POINT IRONS SOLD IN 20 MINUTES

More To Come In Soon

Complete Line of Hardware

WATCH FOR THE ANNOUNCEMENT OF  
HOT POINT ELECTRICAL APPLIANCES

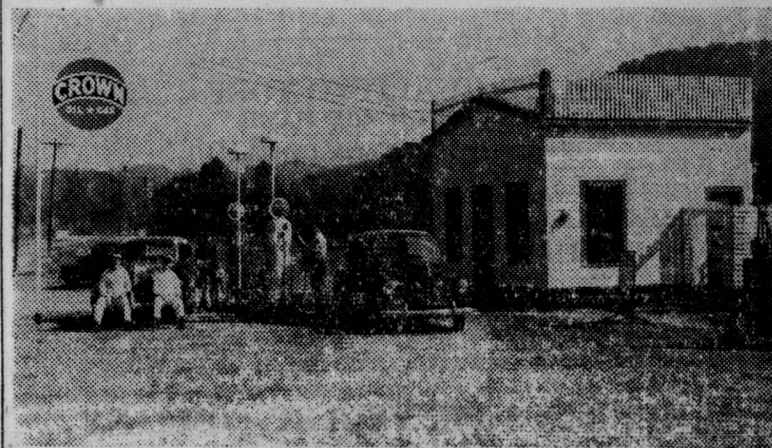
## THE BLACK MOUNTAIN Hardware Company

YOU GET MORE CUPS OF GOOD COFFEE PER POUND



## JFG COFFEE THE BEST PART OF THE MEAL

## Congratulations Crown Service



CROWN GAS AND OIL  
Product of Standard

A complete line—to give you the best of service.

Our aim is to please you. Come by for a check up.

Owned and Operated by  
WORTH BURGESS

Newly decorated inside and out. Painting—remodeling and building.

RAYBURN & SWAYNGIM

PBox No. 563

Black Mountain N. C.