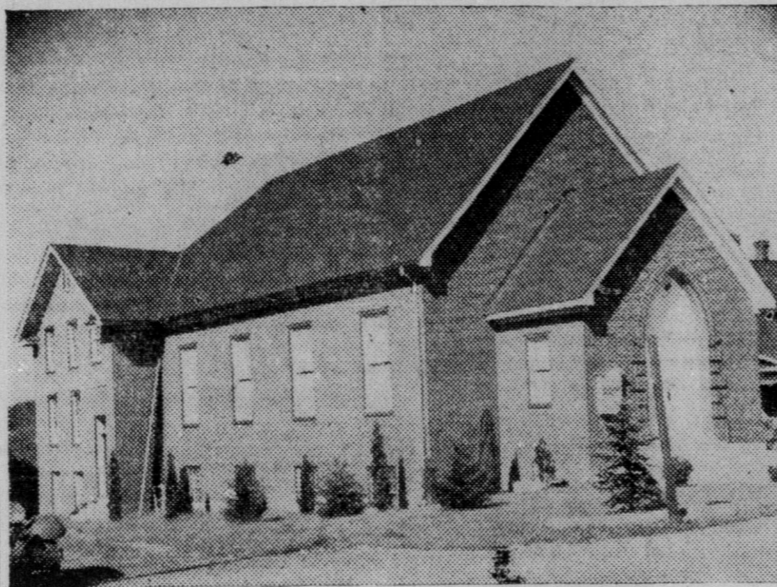


SWANNANOVA NEWS SECTION

HISTORY OF FIRST METHODIST CHURCH OF SWANNANOVA, N. C.



METHODIST CHURCH, SWANNANOVA, N. C.

The first Methodist Church in Swannanoa was a log structure called Davidson's Chapel. It was located on land near what is now Warren Wilson College. This log structure burned, and in its place a frame building was erected.

About 1880 the church was moved to a location above the Swannanoa Valley station. Swannanoa at that time was called Cooper Station. About 1917 Rev. R. F. Honeycutt, then pastor, helped plan and build the parsonage, where it now stands. Later, in 1918, Rev. Mr. Bogle and his congregation decided to build a church down near the parsonage. This was a frame building. This building served the Methodist in Swannanoa until 1937 when under leadership of Rev. W. H. Benfield, the present new brick building, with beautiful auditorium, 12 class rooms, large basement which serves as recreation hall, dining room, and connecting with this large recreation room is a nice kitchen.

During the pastorate of Mr. Benfield, great progress was made on the building. By 1942 the auditorium, with exception of pews and pulpit furniture, was completed.

The present pastor, the Rev. V. R. Masters began his ministry in 1942. Since that time the church has been completed. A modern heating plant has been installed, and new mahogany pews and pulpit furniture was installed in June 1945. On Sunday, September 9, 1945, the church was dedicated. The dedicatory sermon was preached by Rev. A. C. Gibbs superintendent of the Asheville District, who also led in the act of dedication with the Rev. Mr. Ben-



REV. V. R. MASTERS

field and Rev. Mr. Masters assisting.

In addition to Swannanoa Methodist Church, the Rev. Mr. Masters is pastor of the following Methodist churches: Tabernacle, Bethel, Bethesda, and Azalea. He preaches three times every Sunday.

During his ministry the Bethel Church has built an educational building, with class rooms, recreation room and kitchen. New oak pews were installed in May, 1945. In September a new modern heating system was installed. During his ministry 126 have been added to the membership of the churches.

* On the second Sunday in June Bethel educational building was dedicated by Rev. A. C. Gibbs. All churches on the charge are free of any indebtedness.

Mills Feed Store Now Handling 'Security Feeds'

The Mills Feed Store of Swannanoa has added to its new business the "Security Feed" which they have fed for nine years. The Security Feed is made in Knoxville, Tenn. and a fresh supply of feeds are always on hand. At the present time they have Broiler Mash and Egg Mash, but later on in about January they expect to

have a more complete line of feeds from this company.

Mr. Mills and son, Everette, have made several growing tests and finds that for true food value Security Feeds are unsurpassed. Mr. Mills explains that the cost per pound compared to its high quality is worth anyone's comparison. Compare and see the difference in price and benefits against your present feed.

Drop in and pick up the Security Poultry Manual at Mills Feed Store. The manual contains many saving hints, feeding and management program for chicks, growing stock, layers, breeders and broilers.

Plans For Radio Service Shop In Swannanoa

Frank Taylor, a Radio service man at the Dunham Music House in Asheville was looking for a building to locate a radio shop in Swannanoa this week.

Mr. Taylor has had 12 years experience in the business and is also experienced in refrigeration and electric appliance repairs.

Mr. R. M. Miller who is to be connected with the firm also is an expert on radios, refrigerators and all kinds of electrical appliances.

While these men seem to be young in age, they are veterans at this business.

We wish you all the success in the world boys and welcome to our community.

Agricultural and pastoral products constitute more than 80 percent of Argentina's exports. It is the second largest South American country in area and population.

B.P.O.E. AUXILIARY MAKE PLANS TO VISIT OTEEN SOON

Plans for the hospital committee of the Asheville Elks Auxiliary to visit the Veterans Hospital at Oteen and distribute Christmas cards during December was discussed at a meeting of the auxiliary on Thursday night at 8:00 o'clock in the Elks home on Hayward Street.

Mrs. R. B. Rymer is chairman of the hospital last week and distributed 150 boxes of writing paper.

Members of the auxiliary have been asked to bring the dolls which they have dressed for the Salvation Army Christmas boxes.

Lt. Charles E. Liddington Is Assigned To Moore

1st Lt. Charles E. Liddington of 201 N. Washington Street, Alexandria, Va., has reported to Moore General Hospital in Swannanoa, N. C., and has been assigned to the Medical Service, Col. Frank W. Wilson, commanding officer of the hospital, announces.

Lt. Liddington entered the service last January and has been stationed at Carlisle Barracks, Pa.; Mason General Hospital, Brentwood, N. Y.; and at Camp Butler, N. C.

He took his M. D. degree at Virginia Medical School and interned at St. Vincent's De Paul Hospital in Norfolk.

SWANNANOVA SCHOOL NEWS

By Bill Robinson.

I would like to write about how well the people of Swannanoa Valley back the school and its activities. Beacon has bought a lot of equipment for our lunchroom. With their help the lunchroom has been improved greatly. After a hard game the merchants set the football players up to candy, soft drinks, etc. The men of Swannanoa have erected a box in Bright's Grocery to collect money to give the players a banquet. The school is selling magazines and gets a certain percent of sales, the people cooperate and buy these magazines.

By Marian Morgan.

On November 21 at the Warren Wilson College, at 8:00 o'clock p.m., a united Swannanoa Valley Thanksgiving service was held. Piney Grove Presbyterian Church, Berea Baptist Church and Warren Wilson Presbyterian Church were represented. Members of all three churches took part in the program. Members of the farm at Wilson College had decorated the stage in harvest style, with shocks of corn, bales of hay, all sorts of vegetables and one side was the side of a barn, with rakes and hoes standing by. It was very nice and I am sure everyone enjoyed the lovely scenery.

By Merle Eller and Margaret White

We take pleasure in writing and telling you about one of our best hiking places in Swannanoa Valley. This place is called "Flat Top." It is one of the prettiest sights anyone has ever seen when the leaves are turning all colors.

Flat Top has three flats. It is about four or four and a half miles long. The first flat is not so hard to climb, you have straight climbing, straight up a mountain, you cross a fence and then you are on the second flat. The second flat is the hardest one to climb, it has a rock cliff that you have to almost crawl on your hands and knees to get up. The rock cliff is very steep climbing, but it is fun to climb. The third flat is very pretty it is very grassy and looks almost like a movie scene.

It is fun going up, but it is more fun coming down, because you know you are almost home. After you have been to Flat Top there is certainly no place like home.

By Frances Whitaker

Each day on W.W.N.C. at 5:30 a different school is presented to tell the listeners about the various activities of their school. The Swan Club of Swannanoa High is in charge of electing and preparing a speaker for our broadcasts. We have had two speakers already and on December 19 we will pre-

sent another. Miss Parker, director of Women's Activities of W.W.N.C., helps the students with his or her script, when he arrives at the studio and makes any necessary changes, after the script has been altered the announcer then goes over it and times it so that it will last for the allotted time. When the script is timed and changed you are then taken to the studio, here you sit at a small table near a microphone until your time comes to speak.

By Bobby Bailey.

I would like to send you a description of my favorite scene in the Swannanoa Valley. In this small valley are many beautiful scenes but to me the most beautiful of them all is the moon rising through the pine trees and reflecting in the cool water of a small mountain lake. When night falls and the moon rises the soft calling of the birds blends with the soft mummering of the water and the swaying of the pine trees in the cool night breeze. The moon casts a silver reflection upon the blue waters. The soft sounds of the night and moonlight creates a beautiful scene. The Grovemont Lake is truly a beautiful scene at dusk.

By Hazel Nanney.

The dramatics class of Swannanoa High School is presenting a three-act play Friday night, December 7 at 7:30, the name of this play is "One Mad Night."

The directors of this play are Mrs. Elmer DeBurke and Miss Ruth Gilbert. They have certainly worked hard to get this play up. The cast is as follows: Den Cutter, Ned Strackla; Lucille Marcy, Margaret Sharpe; Mrs. Finch, Merle Eller; Gertrude Finch, Voda Bailey; Depression Nancy LeMaster; Mr. Hyde, Kenneth Buchanan; Danny Sillato, Kenneth Mills; Wing, Quentim Enloe; Lady McBeth, Joyce Watkins; Burke, Billy Bartlette; John Alden, Johnny Cordell; Doctor Bunn, Ray Cordell; Percilla, Marjain Morgan.

The actors of this play have enjoyed working in it very much and their acting is very good.

Chicory is the root of Cichorium Intybus, a plant related to the dandelion and closely resembling the parsnip and sugar beet.

DECORATED AT MOORE GENERAL

Sixteen patients in Moore General Hospital were decorated at retreat ceremonies at Moore General Friday afternoon. The ceremonies were held on the hospital parade grounds beginning at approximately 4:30 p.m.

Awards included two Silver Star Medals for gallantry in action, two Bronze Star Medals for meritorious achievement in action; nine Combat Infantry Badges for meritorious achievement in action; two Purple Hearts and one Oakleaf Cluster to the Purple Heart for battle wounds.

Lt. Colonel Thomas L. Gibson, of the Medical Service, served as reviewing officer and decorated the patients; Captain Frederic Rogers was troop commander and Capt. Eugene J. Quindlen was adjutant.

Bolivia's Lake Titicaca, at an elevation of 12,500 feet, is the highest lake in the world on which steamships regularly ply.

SEND IN YOUR NEWS

BAILEY'S TAXI SERVICE SWANNANOVA

LOCATED IN FRONT OF FRIENDLY CAFE
PHONE 2866

Beacon Employment Office

YOU LOSE BY DELAY

Let Us Check BATTERIES - TIRES CHANGE OIL & LUBRICATION GIBSON'S ESSO SERVICE SWANNANOVA, N. C.



CHESTERFIELD BEST DAIRY FEED 20 Percent Protein\$3.50 Per 100 Lbs. HAY\$2.25 Per 100 Lbs. Staff of Life Egg Mash.....\$4.30 Per 100 Lbs.

CHESTERFIELD BEST HOG RATION \$3.70 Per 100 Lbs. SECURITY EGG MASH In Print Bags.....\$4.30 Per 100 Lbs. SECURITY BROILER MASH In Print Bags.....\$4.25 Per 100 Lbs.

CHESTERFIELD "GOOD VALUE" FEED 16 Percent Dairy Feed\$3.00 Per 100 Lbs. Egg Mash\$3.95 Per 100 Lbs.

FLOUR Western Bred Flour.....\$1.40 Per 25 Lbs. Wigwam Self Rising Flour.....\$1.30 Per 25 Lbs.

MONEY BACK GUARANTEE IF NOT SATISFIED MILLS FEED STORE Near Postoffice Swannanoa, N. C.

ASK YOUR DOCTOR

WARDS Drug Store



The REXALL Store SWANNANOVA, N. C.

ROXY THEATRE Swannanoa, N. C.

Thursday, Nov. 29 "THE MYSTERY MAN" with William Boyd and Andy Clyde.

Friday, Nov. 30 "EVE KNEW HER APPLES" with Ann Miller and William Wright

Saturday, Dec. 1 "BEYOND THE PECOS" with Rod Cameron and Eddie Dew

Monday and Tuesday, December 3-4 "DIAMOND HORSE-SHOE" with Betty Grabel and Dick Haymer

Wednesday, Dec. 5 "SEE MY LAWYER" with Olsen and Johnson

One battle won does not win a war. We've got tougher times ahead. Buy More War Bonds

A Decrease of Non-Agricultural Positions

A decrease of non-agricultural job openings in North Carolina in October from 44,221 at the beginning of the month to 37,942 at the end is shown in the reports of openings filed by employers with local offices of the United States Employment Service, Dr. J. S. Dorton, State director of the USES, reports.

This decrease of 6,279 job openings developed in spite of the fact that local USES offices in the State actually placed in local non-agricultural jobs only 9,505 workers during October, 287 less than in September.

In October, 121,687 reception contacts with the public were made in local USES offices, the largest number in any month so far in 1945, except in January, when 164,759 contacts were made. Of these, 113,248 were given additional service. A total of 22,123 were referred to local non-agricultural jobs, 9,505 were placed on local jobs and 120 were placed on jobs in other areas of the State.

Contributes \$1,737.50

Moore General Hospital military and civilian personnel contributed \$1,737.50 to the United War and Community Fund drive. Lt. Marvin L. Golden, chairman of the drive, reported Wednesday the sum was turned over to Buncombe County fund officials who wrote "This is a splendid report from Moore Hospital and we appreciate what all of you have done to make it a success."

SUBSCRIPTION To The NEWS IS ONLY \$2.50

HOWARD W. BATEMAN, Owner and Manager SWANNANOVA FEED STORE

BUCHANAN'S 5c & 10c STORE



XMAS TOYS FOR THE KIDDIES

USE OUR LAYAWAY PLAN FOR YOUR XMAS NEEDS

Come in let us help you select your Xmas Gifts. Many beautiful and useful gifts to select from.

BUCHANAN'S DEPARTMENT STORE Swannanoa, N. C.

GRADE "A" MARKET FROZEN FOODS

A GOOD LINE OF

FRESH FRUITS - VEGETABLES MEATS AND GROCERIES PORTER AND FRANKLIN

PHONE 3865

SWANNANOVA, N. C.

Don't Let Your Chicks or Stock Starve...

GET YOUR FEED at PATE'S SERVICE STATION

WOOD FOR SALE

Near Swannanoa School