

# THE LORAY MILLS

### Largest Cotton Mill Under One Roof in The World

It is not generally known even here in Gastonia that the largest cotton mill in the south under one roof, is located in the suburbs of this city. It is the Loray, and in addition to being the largest it has the reputation among those in a position to know, of being one of the model mills of the country both as regards the management of the plant, and the quality of the product. The mills are located on Franklin avenue, extended at its intersection with Commonwealth avenue, in that section known as West Gastonia. They are of red brick, 5 1-2 stories in height, and have a frontage of 125 feet, extending to the rear 550 feet. Surrounding the mammoth building the company owns over 100 acres of land upon which it has erected 318 comfortable houses of various sizes and styles of architecture, many of them having gardens attached

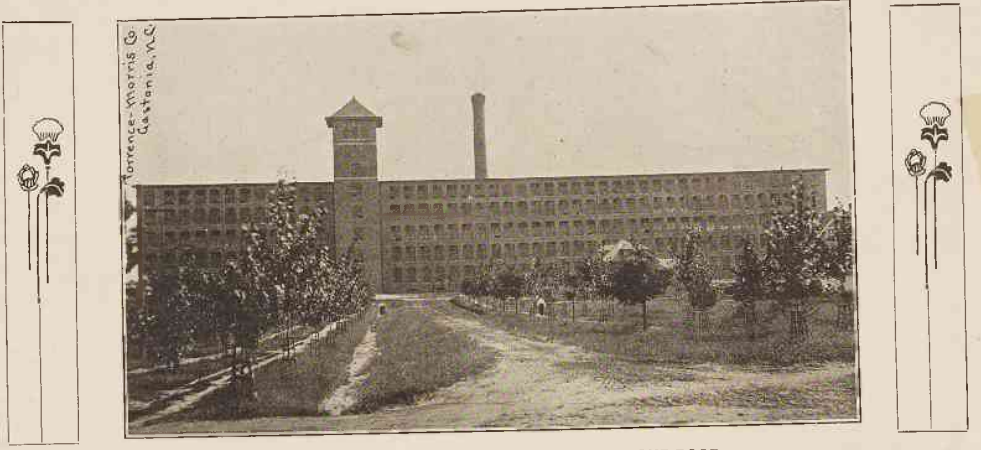
which supply the occupants with fresh vegetables and fruit constantly in season. A pretty flower-bed now and then makes the village more than usually attractive for a settlement of this kind. Four churches, Baptist, Methodist, Presbyterian, and Wesleyan, supply the spiritual needs of the 600 employees of the Loray Mills. There is a public school house on the property, and just beyond its limits a moving picture parlor furnishes an evenings entertainment at a reasonable cost. The mills were incorporated in 1900 at Portland, Maine, where an office is maintained, and building operations were soon begun. There have never been any labor trouble, and employers and employees have, from the beginning, worked most harmoniously together. The nearly 400,000 feet of floor space contained in the Loray, is equipped with 57,000

spindles and 1,660 looms, which turn out an immense quantity of sheetings, print cloth, linoleum goods, and various sizes of yard goods, which find a ready sale in the great markets of the world. Woodward & Baldwin, of New York and Baltimore, are the selling agents of the mills. They are operated by electricity furnished by the Southern Power Company, the great system backed by the Duke's. The mills are, however, equipped with steam power and can be operated with it at any moment. The Loray Mills were established and built by John F. Love and the late George A. Gray, of this city, who operated them until 1904. The officers are: T. E. Moore, president and treasurer; and Andrew E. Moore, secretary and assistant treasurer; M. McIntyre is the superintendent, and has been for the past six years, when he came here from Georgia.

Mr. T. E. Moore, the president and treasurer of the mills, is a resident of Wellford, S. C., and is one of the most prominent cotton manufacturers in the country. He is also president and treasurer of the Gaffney Manufacturing Company, which conducts large

cotton mills, is treasurer and general manager of the cotton mills at Taccapan, S. C., near Wellford. He is a native of Wellford. Mr. Andrew E. Moore is a resident of this city, and is one of its most honored and esteemed citizens. In addition to being

secretary and assistant treasurer of the Loray Mills, he is president of the Citizen's National Bank of Gastonia, and treasurer of the Mayes Manufacturing Company. Both brothers are also interested in other large enterprises.



THE LORAY MILLS—LARGEST IN SOUTH UNDER ONE ROOF

### THE CHRONICLE MILLS.

Manufacturers of Cotton Yarns.

Second only to Gastonia in size among the cotton manufacturing centers of Gaston county, the little town of Belmont, 10 miles north of this city, has made great progress during the last few years. Its oldest industrial enterprise is the Chronicle Mills, where fine cotton yarns in warps, skeins, cones and tubes in wet or dry twist are manufactured on a large scale. When these mills were established in 1901, Belmont was scarcely more than a flag station on the Southern railroad, but the mills put the town on the map, and it now boasts a population of 1,500, most of the inhabitants being engaged in the cotton industry. When they first began operation there were only 5,000 spindles, but the demand for the product became so great that an addition was made in 1908, and there are now 10,176 spindles constantly in operation. The Chronicle Mills are two stories in height, and have a frontage of 50 feet, extending to the rear 300 feet, providing a floor space of 30,000 square feet. They are well lighted

urer. Mr. Lineberger is one of the largest manufacturers in this section of North Carolina. He is a native of Gaston county and has been in the cotton business all his life, being president of the Imperial Yarn Mills and the Majestic Manufacturing Company. Mr. Rhyne is also a veteran manufacturer and is also a native of Gaston but now lives in Lincoln county, where he is the principal owner of the Rhyne Mill, the Lincoln Cotton Mill, and the Laboratory Mill, all of them located near Lincolnton. Mr. Stowe the secretary and treasurer was born a few miles from Belmont, and is thoroughly acquainted with every detail of cotton manufacture having been engaged in the business for years. He is also secretary and treasurer of the Imperial Yarn Mills of Belmont. Mr. C. E. Tucker is the capable and experienced superintendent. The directors are Messrs. A. C. Lineberger, D. E. Rhyne, J. Q. Hall, R. L. Stowe and S. P. Stowe.

IMPERIAL YARN MILLS, Inc.

Manufacturers of Fine Yarns.

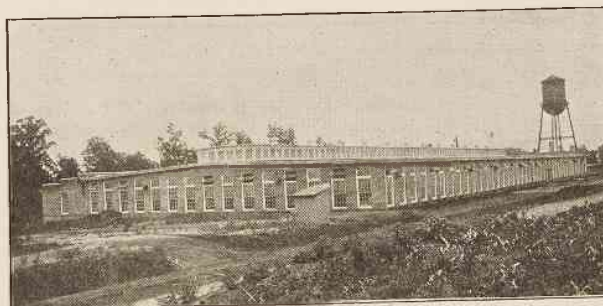
One of the most recently erected cot-

stories and the machinery is of the latest improved pattern. It has a frontage of 75 feet extending back 300 feet giving a large floor space in which are located 10,368 spindles. This is splendidly lighted and the open space about the building permits the most thorough and perfect ventilation. About 200 people are employed. The product of the mills consists entirely of combed yarns 60's and 80's, made from the finest Peeler cottons and are in great demand. The officers of the Imperial Manufacturing Company are: A. C. Lineberger, president; D. E. Rhyne, vice-president; and R. L. Stowe, secretary and treasurer. All of these gentlemen are veterans of the cotton manufacturing business, having been engaged in it for a number of years, and all are natives of Gaston county. Mr. Lineberger, the president, is also president of the Chronicle Mills and the Imperial Yarn Mills, while Mr. Rhyne is the owner of several mills near Lincolnton. Mr. R. L. Stowe, the secretary and treasurer, is one of the owners of the Stowe Brothers Company in Belmont, one of the largest general stores in this section, and is also secretary and treasurer of the Chronicle Mill.

mills from the day the machinery was started. The officers of the Majestic Manufacturing Company are A. C. Lineberger, president; D. E. Rhyne,

cotton goods and the spinning of yarns and twists, Gastonia and the county has long held a leading place, in fact in the number of its mills, Gaston county

large. The officers of the company are: L. L. Jenkins, president; J. Lee Robinson, vice-president; L. F. Groves, treasurer; and L. L. Hardin secretary. Mr. Jenkins is a native of Gaston county, and made his home in Gastonia for many years, and still has large interests here, being president of the First National Bank, the Flint Manufacturing Company, and largely connected with other corporations. Several years ago he removed to Asheville, where he is president of the American National Bank. He has, however, always retained his confidence in the future of Gastonia, in which he is deeply interested, and in forwarding the growth and prosperity of which he has always taken a leading part. Mr. Robinson, the vice-president, is connected with the First National Bank, and is also interested in other enterprises. Mr. Groves, the treasurer, has for years been engaged in cotton manufacturing, as has Mr. Hardin, the secretary. The latter is president of the Commercial Club.



MILLS OF THE MAJESTIC MANUFACTURING COMPANY

vice-president; and S. P. Stowe, secretary and treasurer. The president has taken a leading part for years in developing the cotton manufacturing industry in the Piedmont region, and is one of its leading citizens. He is a native of Gaston county. Mr. Rhyne was also born in the county, but is now

stands head and shoulders above any other county in the South. Among the mills none ranks higher for the quality of its products than does the Arlington Cotton Mills, located along the tracks of the Southern railroad in the western suburbs of the city. This is one of the oldest mills in Gastonia,



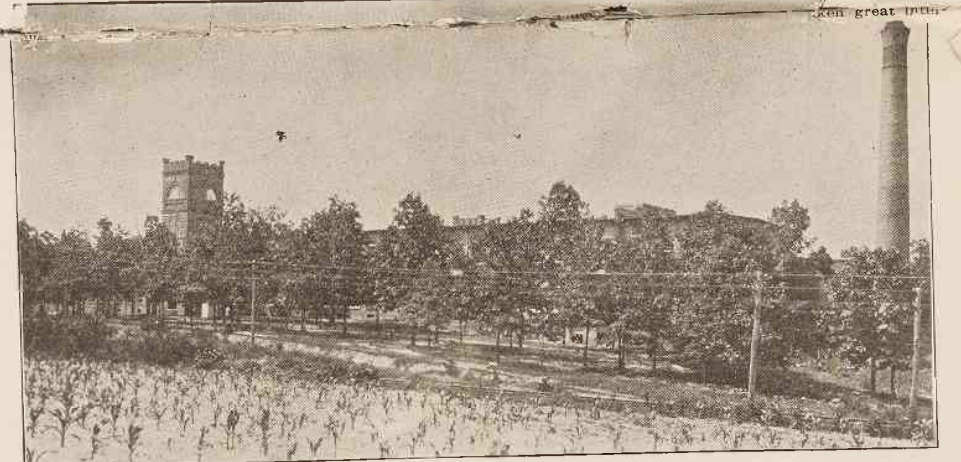
THE IMPERIAL MILLS

and ventilated and everything possible is done for the comfort and health of the 225 people employed. The cottages occupied by them are unusually attractive and sanitary, and there is generous garden space which is taken advantage of by some of the families. The officers are: A. C. Lineberger, president; D. E. Rhyne, vice-president; and R. L. Stowe, secretary and treas-

on manufacturing plants erected in Gaston county is that of the Imperial Yarn Mills at Belmont, and it is a model for others to follow. Advantage has been taken of the mistakes of other mill builders and these have in every case been corrected when the Imperial was built in 1906, making as has been said one of the model mills of the country. The mill is two

### MAJESTIC MANUFACTURING COMPANY.

No concern has done more toward making the thriving and progressive little town of Belmont a center for the manufacture of fine yarns than has the Majestic Manufacturing Company which established its mill there in 1908. These mills were to some extent a new departure in mill building. The company had plenty of ground and instead of building two or more stores it was decided to have only one, and have a larger space. The mills front 125 feet and extend back a distance of 340 feet providing a floor space of 42,500 square feet. They were built in 1908 and are the most modern of the three cotton mills located in Belmont. The plant has 12,768 spindles. The product consists of fine 70's to 120's combed yarns made exclusively from Sea Island and Egyptian cottons which find a ready sale in the best markets and about 200 people are regularly employed. The cottages and tenement houses belonging to the company are comfortable, and in many cases attractive and the employees seem to be happy and contented, many of them having been employed in the



THE ARLINGTON MILLS

a resident of Lincoln county, where he owns several mills and has other large interests. Mr. Stowe is a brother of Mr. R. L. Stowe and they are the owners of The Stowe Brothers Company, which conducts the largest general store in Belmont.

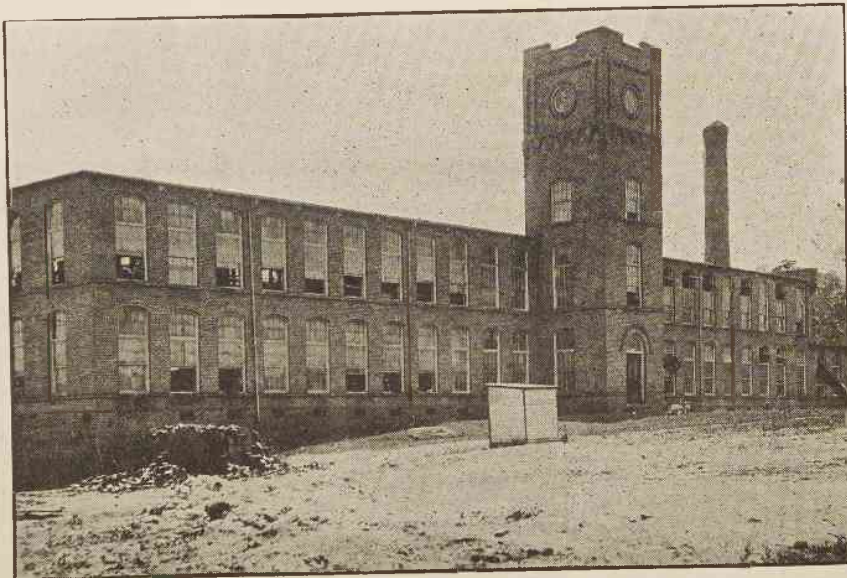
having first began operation in 1900, and produces yarns exclusively. It is equipped with the most improved machinery that ample capital and long experience could gather, and employs about 200 operatives. Near the mills is the little village of 55 houses belonging to the mill company, and these are kept in the best of condition. There are about 12,500 spindles in constant operation, and the output is

W. L. BALTHIS & COMPANY.  
Cotton Brokers.

Cotton is the very life of Gastonia, and the growth and prosperity of the city depends almost entirely upon the great staple which supplies the world to a great extent with its cheaper clothing, and a great many other things besides. Everyone in the city,

### ARLINGTON COTTON MILLS.

As a centre for the manufacture of



THE CHRONICLE MILLS



OFFICE OF W. L. BALTHIS—COTTON BROKERS