

# State Announces In Autumn's Favor

BY SUSAN USHER

Overriding the recommendation of a regional health planning board, the state announced Friday it has approved a proposal from Autumn Corp. of Rocky Mount to build a 110-bed nursing home facility in Shalotte.

Letters of notification were mailed Friday to the six firms seeking to build nursing homes in Brunswick County.

Parties unhappy with the state's decision have 30 days in which to appeal, indicated Lee Hoffman, Area 5 project analyst with the N.C. Division of Facility Services Certificate of Need Section.

"I'm sure that they will," she said, basing her comment on the section's experience in other areas of the state. "In areas where we made decisions last month, two of three cases have already been appealed. We expect it because there is so much competition for the nursing homes."

A two-year moratorium on nursing home construction was lifted July 1. Also, there are a limited number of beds allocated under the state's health care plan according to regional needs. Brunswick County has an identified need for 100 long-term care beds.

Autumn was one of six firms vying for the certificate of need required to build all or a part of those beds. It proposes to build a \$1.79 million project that includes 50 skilled, 50 intermediate and 10 home for the aged beds in Shalotte.

An appeal or a request for a contested case hearing can be filed by "almost anyone," she had told The Beacon earlier, including the firms whose applications were rejected or residents of the area to be served.

A choice of two first steps exist—requesting a reconsideration hearing at which new information will be presented or, the most frequent option, the contested case hearing.

An appeal can take a year to two years to resolve, with no construction begun in the interim.

Autumn Corp., based in Rocky Mount, owns six nursing homes in North Carolina and four in Virginia with a total of 717 beds. Beverly Enterprises, its major competitor, operates 17 facilities in the state.

The Cardinal Health Systems Agency Board of Directors recommended in January that Autumn's strongest competitor for the certificate, Beverly Enterprises, be granted a certificate of need by the state to build a 100-bed nursing home on property adjacent to Brunswick Hospital in Supply. Beverly is one of the largest nursing home companies in the world. It had proposed a \$1.7 million project at Supply with 50 skilled and 50 intermediate care beds. Its plans called for sharing ancillary services, as well as utilities such as sewer treatment and disposal facilities, with the Brunswick Hospital.

Cardinal is the health planning organization for 15 southeastern counties. The board, in its recommendation supporting Beverly, had upheld the opinion of its project evaluation committee.

Initially the agency's staff had ranked Autumn's application the best of the six it received.

Ms. Hoffman said that during the 30-day period for filing appeals, she could not discuss why Autumn Corp.'s application was approved over those of the other applicants.

The firms had to meet 21 standards set by the N.C. General Assembly relating to community need, cost containment and availability of resources to support the project.

Applicants had to show their proposals had immediate and long-term financial feasibility, the probable impact of the proposal on the costs of and charges for providing the services they proposed to deliver, reasonable costs and methods of construction and provision of nursing care.

Also, availability of services to all elements of the population, particularly groups that have traditionally experienced difficulties in obtaining equal access to health services such as women, low income persons or racial and ethnic minorities, the handicapped and the elderly.

Other applicants seeking to build in Brunswick county were Britthaven Inc., Triad Medical Services, Health Care and Retirement Corp. of America, and Cypress Springs with Unifour Medical Management.



STATE TROOPER W.H. Morgan watches as Calabash Volunteer Rescue Squad workers help remove a driver from her wrecked car Sunday evening near Calabash.

The driver received minor injuries in the one-car accident.

## Woman Injured In Wreck

A Virginia Beach, Va., woman received minor injuries Sunday evening after her car ran off the shoulder of U.S. 17 near Calabash and struck a ditch bank, the State Highway Patrol reported.

According to State Trooper W.H. Morgan's report, Deborah Deen McCormick, 29, was traveling on U.S. 17 about three miles north of Calabash when her 1985 Plymouth ran off the right side of the highway, causing her to lose control of the car. The car then crossed the left lane of traffic and ran off the left shoulder, striking a ditch bank, Morgan reported.

Ms. McCormick's car was registered to the Exco Leasing and Rental Co. of Charleston, S.C., and received about \$2,800 in damage. Members of the Calabash Volunteer Rescue Squad transported Ms. McCormick to the Brunswick Hospital in Supply where she was treated and released.

According to Trooper Morgan's report, no citation was issued in the accident. Morgan did indicate Ms. McCormick may have been exceeding a safe speed limit for the conditions, which was estimated around 50 mph in the 55 mph zone.

The accident occurred around 5:10 p.m.

## Discards Needed For Coastline's Sale

Spring cleaning over the Easter holiday? Don't rush to throw that trash away.

Instead, save those old bed frames and toasters—any discards that still have some good use remaining—for the Coastline Volunteer Rescue Squad's sixth annual July 4th Trash and Treasure Sale. It will be held July 4-7 at the squad building across from Caison's Superette on Holden Beach Road.

Donations are tax-deductible; receipts are available.

Squad volunteers will schedule a delivery to the squad building, or if the item is bulky or heavy, such as a mattress or stove, they can pick it up.

A surprising array of goods can be used, even, in past years, several boats that required caulking and a car needing engine work. These items are sold on closed bid, adding to the squad's treasury.

To arrange pick-up or delivery of discarded, but useful items, contact Co-Chairmen Kathleen Jacobs, 842-6978, or David Hoover, 842-9052. Or call the Coastline dispatcher on the emergency 842-2222 number and a member will return your call.

The Trash and Treasure Sale is a main source of financial support for the squad.

During March members responded to 57 calls for help, 19 of which were classed as life-saving emergencies. Members responding to calls volunteered 296 hours on active duty. This excludes time spent in training, performing maintenance and in administrative meetings, or on call or on dispatcher duty.

## Menu Includes Easter Ham

Baked ham, traditional Easter fare, joins fried chicken on the menu Saturday, April 6, at a dinner sponsored by the Supply Volunteer Fire Department.

Plates will be served from 11 a.m. to 5 p.m. at the fire station on N.C. 211 just south of the U.S. 17 intersection. Cost is \$3.50 each, with all proceeds to benefit the fire department.

**J.M. PARKER & SONS, INC.**  
Your Complete Building Headquarters!  
**754-4331**

HWYS. 211 & 17

Supply

A N N O U N C I N G

## OYSTER BAY'S FIRST GOLF VILLAS

Not every coastal barrier island renders a gem of a condominium value these days. If you've shopped in the greater Myrtle Beach area lately, you know. That's why we call **The Colony** at Oyster Bay Plantation "the pearl of the South Brunswick Islands."

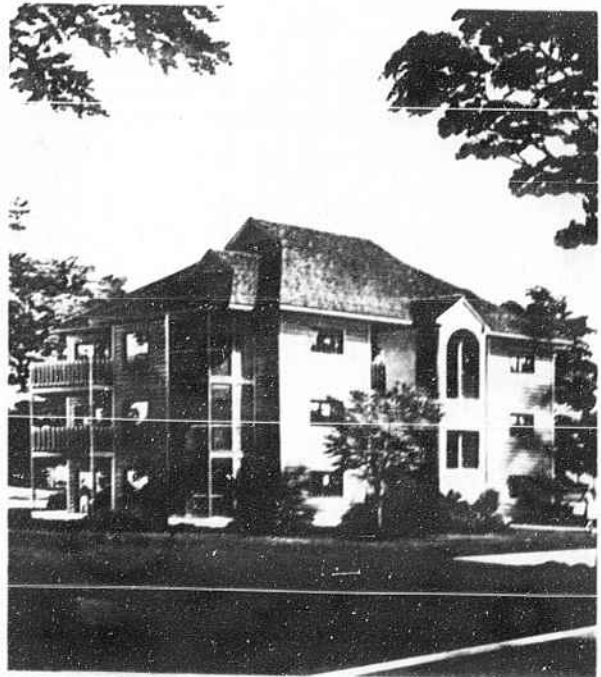
Located at Sunset Beach on the northern tip of the Grand Strand, you're right in the middle of two famous, world class golf courses — Oyster Bay and Marsh Harbour. In fact, **Golf Digest Magazine** named Oyster Bay the best new resort course of 1983. Oyster Bay Plantation is simply unsurpassed.

But the exciting find today is **The Colony** at Oyster Bay Plantation, your place in this golfer's mecca. These beautiful new 2-bedroom, 2-bath fairway villas feature the latest concept in floor plan design: the "lockout", a 1-bedroom, bath suite you can use and enjoy or share with friends. And the landscapes, designed by Robert Chestnut, blend architecture with nature and make it art. There's even access to the Intracoastal Waterway so boat owners can be in the Atlantic in minutes.

Add amenities, like the Tennis Courts, Swimming Pool with Clubhouse and private plantation security... then you can see **The Colony** at Oyster Bay Plantation is truly a rare condominium value.

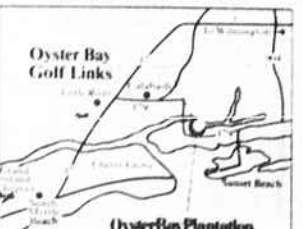
Discovering Oyster Bay is easy. It's just 15 minutes from North Myrtle Beach. Follow U.S. Hwy 17 north, Exit 179 through Calabash to Sunset Beach. Prices start at \$74,900.00.

Visit our on-site furnished model overlooking the Oyster Bay Golf Links. Open Daily.



*The Colony*  
**Oyster Bay Plantation**

Call Toll Free 1-800-334-4723  
In N.C. Call Collect (919) 579-4300  
Box 900 Shoreline Drive West  
Sunset Beach, NC 28459



Please send me more information.  
Name \_\_\_\_\_  
Address \_\_\_\_\_  
City \_\_\_\_\_ State \_\_\_\_\_ Zip \_\_\_\_\_  
Phone (h) \_\_\_\_\_ (w) \_\_\_\_\_  
Not an offer or solicitation to sell. Prepared by Litus.

**LITUS REAL ESTATE**

## Measure Before You Shop

**30% OFF**

Mini Blinds & Vertical Blinds  
WITH FREE  
INSTALLATION

**CARPET**

**Mayfair**  
Wallcoverings  
**30% OFF**

**REMNANTS  
BELOW  
COST**

FREE ESTIMATES      EXPERT INSTALLATION

IN STOCK PRICES ON  
CARPET & VINYL BEGIN AT...  
**Just \$5.99 Sq. Yd.**

754-8049      Main Street      754-6965

**COASTAL  
WALLPAPER  
& CARPET**