

## Soils, Septic Tanks Topics Of Workshop

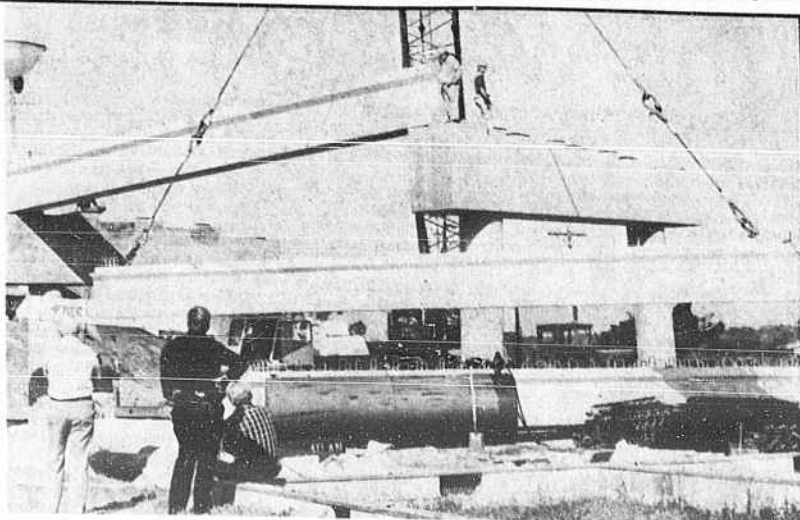
A workshop in Wilmington April 13 and 16 offers basic information on soils and septic tank site evaluations to environmental health officials and interested members of the public.

Health Educator Lynn Royal of the Brunswick County Health Department said the event is sponsored by the Wilmington Area Health Education Center and the N.C. Division of Health Services.

Topics on Monday include septic tank systems, soil definition and soil profiles, soil forming factors, topography and soil characteristics.

On Tuesday topics include soil drainage and depth, space, engineering appeals, restrictive horizons and organic soils, soil surveys and septic systems in fill.

The workshop will be held at the Cameron Education Center Auditorium at 2131 South 17th Street, adjacent to New Hanover Memorial Hospital. Registration begins at 8:30 a.m. and workshop sessions will be conducted from 9 a.m. to 4 p.m. A \$4 registration fee covers both days and includes breaks, instructional materials and other costs.



## Holden Bridge Spans Arrive

Construction workers took another step toward completing the Holden Beach high-rise replacement bridge last week when the concrete bridge spans arrived. Raising and setting the giant spans in their places, above, drew spectators on the island last Thursday, like Town Manager Bob Buck, left, police officer George Adkins

and Mayor Kenner Amos, sitting. Workers secured the spans with giant cables, left photo, that a single crane used to lift the spans onto the concrete pillars. Amos said the construction crew is ahead of schedule and might have the bridge completed as early as December 1985.

STAFF PHOTOS BY TERRY POPE

## Students To Vie In Contest

Local high schools will compete this month to see whose business students are the fastest and the best.

No more than 21 students from each of the three county schools can enter the business/data processing contest sponsored by Brunswick Technical College in cooperation with the county school system.

The event will be held on the BTC campus April 27. Competition will be judged in four areas: beginning and advanced typewriting, accounting and basic computer programming.

Connie Powell, college public information officer, said the school receiving the highest number of points in all categories will receive a trophy as grand prize overall winner.

Entry forms must be received by April 19 for students who wish to participate in the contest.

## Three Discharge Permits Sought

The N.C. Division of Environmental Management has announced its intent to issue discharge permits to three local applicants.

Permits would be effective May 1 for BWB Inc.-Carolina Shores Utility Co. Carolina Shores Wastewater Treatment Facility, where there is one existing discharge of treated domestic wastewater into an unnamed tributary to Persimmon Swamp.

Also effective May 1, would be a permit issued to Saint Mark's Day Care Center Inc.- Franklin Arms Apartments, for a proposed discharge of treated domestic wastewater into Lockwood Folly River near the junction of the river with U.S. 17 at Supply.

Comments on these proposed permits are due by April 18 to the DEM.

Comments were due April 11 on a third application. The state proposes to issue a discharge permit effective April 24 to Carolina Power & Light Co.'s Brunswick Steam Electric Plant media/visitors' center for one proposed discharge into the plant canal and the Atlantic Ocean, subject to special conditions.

Copies of the draft permits are available from the Division of Environmental Management, Archdale Building, Raleigh, N.C. (733-5083), or the Wilmington Regional Office, 7225 Wrightsville Avenue, Wilmington, N.C. (256-4161).



CALL FOR OUR SPRINGTIME SPECIAL

Hospital Plaza  
17th Street  
Wilmington, N.C.  
762-6516



1004 1/2 N. Howe St.  
Southport, N.C.  
457-4777

Call me when you decide to be thin.

That's the most important part, your decision to really do something about those excess pounds.

Loss weight just once, not once in a while, but once & for all.

**Solid Oak  
Glass And Brass  
Coffee and  
End Table Set**

**\$119<sup>95</sup>**

6 Mos.  
Same  
As Cash

**Grand Opening**

**Beautiful  
Dark Pine Table  
with 4 Matching  
Windsor Chairs**

Unbelievable At

**\$188<sup>88</sup>**

Instant  
Credit

Wilmington's Low Prices At Your Convenience Now!

**Sofas With  
Matching Chairs**

As Low As

**\$299<sup>95</sup>**

**Ceramic  
Lamps**  
**\$6<sup>88</sup>**

We  
Will  
Not  
Be  
Undersold

Shop  
Now  
And  
SAVE!

**Contemporary  
Sleeper Sofas**

"Great Savings"

**\$396<sup>88</sup>**

**All  
Thomasville  
Mattress Sets**

**50% OFF  
And More**

**GIBSON'S CERTIFIED FURNITURE**

1039 S. College Road, Wilmington, 919-392-6565

U.S. Hwy. 17 S., Coastal Plaza Center, Shallotte, 919-754-9495