

Tell The Realtor You Saw It In The Beacon!



Ocean Isle Beach Causeway
Next to Island House
(919) 579-7038

Evelyn Madison, Broker, 754-6713
Gordon Ragsdale, Broker, 579-9266
Merlin Boone, 579-3408
Al Newton, 579-7804
Nick Newton, Broker in Charge, 579-7804

FEATURE OF THE WEEK!
Marsh Cove—This lovely home has too many features to enumerate! 3 BR, 2 baths, screened porch, FP, walk-in closets. Overlooks lake. \$99,900.

Crown Creek—Fantastic view of ICW, 2 BR plus loft, 2 baths, living room, dining room, all appliances, screened porch, detached garage. Beautifully landscaped. \$92,500.

We will have 6 new homes under construction within the next 10 days on the new concrete canals at OIB. They will be built by the finest builders in the area. Sites range from 1,750 to 2,100 sq. ft., priced from \$139,900 to \$165,000. Buy now and pick your colors.

Shell Point Acres—2 BR mobile home, completely furnished. Includes additional lot. Only \$19,500.

A little dallhouse, just one block off OIB Causeway, 2 BR, 2 baths, fireplace. Like new, completely furnished. \$45,900.

Oceanfront Condo—Beautiful, 2 BR, furnished. Conveniently located. Super buy at \$125,000.

Holden Beach—Waterway home with beautiful view. Live upstairs, rent downstairs. 3 BR, 2 baths up, 2 BR, 1 bath down. Super investment! Make an offer.

Sunset Beach, Shoreline Dr.—3 BR, 3 baths, living and dining rooms. Full basement that could be rental apartment, plus Florida room and garage. \$79,900.

Sea Gull—Near Shallotte Point. Mobile home and lot with unfinished 14 ft. room attached. Priced to sell for only \$13,900.

Copas Shores—Overlooking lake. Approx. 1,850 sq. ft., 4 BR, 2 baths. All this on an oversized lot. A super, super buy! Call for details.

Shallotte Point—4 BR, 2 1/2 baths, living room, dining room, den, utility room, extra large recreation room. \$89,900.

Near Winnabow—Mobile home on approx. 1.32 acre lot. 2 BR, 2 baths. 8x16 utility bldg. \$18,000.

Marsh Cove—New 3 BR, 2 full bath home. Sunken living room, microwave, enclosed garage, privacy fence, 12x10 deck. \$89,900.

Mobile home and lot, 2 BR, 1 bath, excellent condition. Includes septic tank and well on large wooded lot. \$15,500.

Sherrow Estates—Like new, quality built home on 1 1/4 acres. 4 BR, 2 baths, great room with fireplace, large detached utility office. Well landscaped. \$74,900.

Shallotte Point—2 BR, 1 1/2 baths, living room, screened porch, central utility storage. View of the river. \$44,900.

House on oversized lot, Bluff Drive, Copas Shores area. 4 BR, 2 full baths, 2 half-baths. Owner financing.

Shallotte Point—4 BR, 3 baths. Extra large lot near the water. \$56,900.

On the waterway—2,200 sq. ft. 3 BR, 3 bath home with large den, dining room and Florida room. Was \$151,900. Reduced to \$148,900.

House on Ocean Haven Road near Ocean Isle Beach—3 BR, 1 full bath, large lot. Was \$44,900. Reduced to \$39,900.

New Canal Homes
Sunset Beach—Canal home, 1,850 sq. ft., cypress siding. Quality throughout. Fantastic view! Fantastic location! Fantastic home! \$149,900.

Condos
Sand Dwellers—2 beautifully furnished, ideally located condos, both with fantastic views. Units B8 and D13. \$68,900 and \$69,900.

Starboard By The Sea—Side-by-side units with view of sound. Custom furnishings and window treatments. 3 BR, 2 baths. \$95,900 each.

Lots
Seaside Station, Sea Trail—60x150 wooded lot, Japanese Lane. \$13,000.
Green Bay Village—Mobile home lot with well and septic tank. Only \$4,500.

2 mobile home lots in High Hill Subdivision. \$3,500 each.

River Bend—2 fantastic building lots on Shallotte River at Middle Dam. \$27,900 and \$29,900.

Sea Village—2 large mobile home lots near OIB and Sunset Beach in restricted area. \$5,500 each.

Shallotte—Pine St.—Large wooded lot on deep water in city limits at Shallotte—desirable location. \$50,000.

Sundown Acres—2 adjoining mobile home lots. \$4,700 and \$5,500.

Copas Shores—Large beautifully wooded lot, 100 ft. on deep water. Call for details.

Village Point Estates—New restricted subdivision adjoining Brierwood Golf Course. Lots begin at \$9,000 with owner financing—10% down, 10% interest for 10 years.

Brierwood Estates—3 lovely lots, 2 are fairway lots. \$11,000 to \$38,500.

Woodack Retreat—2 adjoining lots overlooking lake at sacrifice price of \$5,500 each.

Waterway Lot (Ocean Haven)—near Ocean Isle Beach, 75x200, with large trees and a great view. \$60,500.
See our other ads for commercial and investment property.

HOLDEN BEACH AREA SHELL POINT ACRES
12x45 mobile home on 70x100 wooded lot. Furnished with appliances.
Phone 842-9114

McLAMB Auction and Realty Company
Calabash—Sunset Beach, N.C.
Several beautiful wooded lots with paved streets and city water located in Bay Point Subdivision (overlooking Calabash River) on Highway 179 between Calabash and Sunset Beach, N.C. These lots are approved for late model mobile homes. From \$10,000 each! Excellent seller financing with only 5% down. Call now!

Calabash—Sunset Beach, N.C.
Brand new 14x70 Fleetwood mobile home completely set-up with brick underpinning, heat pump and large sundeck along front and side. This home is located on large wooded lot with paved street full-way between Calabash and Sunset Beach. Must Sell! \$37,500 or best offer. 20-year financing with only 5% down. Call now!

McLamb Realty
N. Myrtle Beach
(803)249-3491
North Carolina
(919)287-6541

Fulford Realty
SR 1139, Sea Shore Rd.
Holden Beach Area
Phone (919) 842-2692

HOLDEN BEACH AREA—Nice brick home on large wooded lot. Approximately 2,300 sq. ft. Quality construction with extra features. 3 BR, 2 1/2 baths, outside shop 18x28. See it and you'll want it!

GATOR GRANT—Lowest priced waterfront lots available. Only a few left. \$25,000.

SHORELINE ESTATES—2 lots on paved street. No clearing needed.

MOORE'S SUBDIVISION—11 lots near the beach. Owner financing 10% down, 12% interest, 5 years. \$4,800 each.

BUCCANEER HILLS—2 beautiful lots with excellent view of lake and Intracoastal Waterway. Septic tank and deep well. Close to tennis court. Access to boat ramp and pier. Excellent buy!

HIGH MEADOWS ESTATE—Shell Point—3 large beautifully wooded lots, average size 100x150. Fronts on 2 streets and near water. Excellent mobile home on one lot with storage building and boat shed. Financing available. \$27,200.

RIVERSIDE II—3 lots in restricted subdivision in view of Lockwood Folly River. Access to boat ramp and pier. Priced to sell.

GATOR GRANT—Nice corner lot. \$6,500.

BOONE'S NECK AREA—Restricted homesite lot 70x200. \$4,500.

FIDDLER'S COVE—2 choice lots. Both lots for \$9,000.

SHORELINE ESTATES—If you want economy see this one. Mobile home with addition and deck. \$11,000.

OCEAN ISLE BEACH—Call for available properties.

FRONT INTRACOASTAL WATERWAY—lots as low as \$25,000. Financing available on some lots at a low rate of interest.

OVER 100 LOTS available in various subdivisions near Intracoastal Waterway and beach. Pick your location.

CAROLINA SHORES—Large wooded lot approximately 1.8 acres. This is a steal at \$12,000.

MOBILE HOME AND LOTS—Located in Tanglemore, Summer Place Gator Grant, Bivens Run and Shoreline Estates. Some very good buys for permanent homes or vacation. Call today. Save yourself the trouble of setting up—just move in.

275 ACRES of beautiful natural acreage with frontage on Watcomow River. \$225 per acre.

FARM OR RANCH—107 acres with 40 acres cleared. Located in Ash area. Can be divided into small tracts at \$600 per acre for woodlands or \$1,200 for cleared land. Buy all for \$960 per acre. Also, 30 acres for \$960 per acre.

SEASHORE ROAD—1 1/2 story dwelling 3 bedrooms 2 baths, living room with fireplace, kitchen, dining large porch and garage. Financing available.

SHORELINE ESTATES—Almost new 14 ft wide mobile home and lot \$15,700.

Let us help you find the property of your choice!

John Hewitt—Broker
Kathleen Fulford—Broker
Kathy F. Galloway—Salesperson

Moon Realty

Office located at Centennial Motel
Sunset Beach, Phone (919) 579-2953

CONTINENTAL MOTEL UNITS (condominiums) now being sold, 2-room apartments, \$25,000. 3-room apartments, \$36,500. Financing available.

SUNSET LAKES—3 bedrooms, large living/kitchen combination. Nice view of lake in quiet neighborhood. \$46,500.

CAROLINA SHORES NORTH—Lot No. 57. \$9,400.

SUNSET BEACH—We can build a home for you on this lot on 4th St. Please call for more information.

MARSH COVE—2 bedroom, 2 bath, quality built, energy efficient new home. Cedar siding, full basement, lake view with golf privileges. \$89,900. Others available from \$55,400.

SUNSET BEACH—Brand new 3 BR, 2 bath, 2,000 sq. ft. contemporary home with panoramic view of ocean, inlet and marsh. \$129,900.

SUNSET BEACH—Bay St. 4 BR, 3 bath saltbox on canal with excellent view of ocean and inlet. \$149,900.

Call Randi at 579-2953

sloane realty

579-6216
579-6217

OCEAN ISLE BEACH N.C. 28459

OCEANFRONT LOTS AVAILABLE \$150,000

OCEANFRONT CONDOMINIUMS
Variety of oceanfront condominiums available. NEW, previously owned and units under construction. One to three bedrooms, priced \$64,500 to \$189,500.

NEW LISTING—3 BR, 3 baths, additional large lot BR, c/h/a, fully carpeted, large kitchen with appliances, unfurnished. \$150,000.

UNDER CONSTRUCTION, OCEANFRONT DUPLEX—114 East 1st St. \$198,500 each side.

3 BR, 1 1/2 baths, c/h/a, carpeting, fireplace, all appliances, washer/dryer. Owner anxious to sell. \$55,000.

BEACH BARN—7 BR, 4 1/2 bath home, an OIB rental favorite. Fully furnished, all appliances. Best built house on the beach. Annual rental income is phenomenal as it rents all seasons. \$275,000.

HALF OF DUPLEX—6 BR, 3 1/2 baths, c/h/a, carpet, washer/dryer, dishwasher. Fully furnished. \$210,000.

BEAUTIFUL 6 BR—3 bath cottage with all glass across ocean side, beautifully furnished. Never rented, but could be excellent rental investment. \$250,000.

THIRD & FOURTH ROW HOMES
CATES HOUSE—Unique 4 BR, 2 baths, c/h/a, fireplace, wet bar, loft den, partially furnished. Great view of waterway. \$150,000.

HOSTETLER—Fully furnished 3 BR, 2 bath year round home. Great room with designer kitchen and window treatments. Secure neighborhood with fantastic ocean and waterway inlet view. Never rented. \$94,000.

HAMMOND—2 BR, 2 bath house with beautiful view. All major appliances, nicely landscaped with concrete underneath. Never rented but in great rental location. \$74,500.

FAIRMONT STREET—4 BR, 2 bath house with concrete underneath. Remodeled kitchen, new roof. New carpet and c/h/a, furnished. \$105,000.

DARE STREET—Under construction, 3 BR, 2 1/2 bath home with loft, den, cathedral ceiling & fan in living room. Floating dock, roof-top deck. \$139,000.

CORNER 2nd & RICHMOND STREETS—4 BR, 2 bath home on T of canal facing ocean. C/h/a, all appliances. Excellent condition. \$150,000.

MAINLAND PROPERTIES
Choice lots of Brierwood Estates.

Bent Tree: The South Brunswick Islands' newest restricted waterway development. See us for complete details on this truly unique community!

Crown Creek—New 3-bedroom, 2-bath house. Central heat and air, carpeted, all kitchen appliances, fireplace, large master bedroom with dressing area and walk-in closets. Wooded lot, access to dock. \$78,500.

We have many other island properties for sale, along with building sites and retirement homes on the mainland. Please call for a complete sales list.

J.G. Worrell Realty
754-8723
Shallotte

Ocean Trail—Near Holden Beach, 4 BR, 2-bath barn style home. \$35,000 or rent monthly for \$325.

Riverview—New 3 BR brick home, 1 1/2 baths, decks, appliances, heat pump. \$59,900. Also 2 BR with heat pump on 3 lots. \$55,000. Both properties overlooking and access to Shallotte River.

Hernando's Hideaway—Will sacrifice. Point 2 BR cottage with Carrier heat pump on 2 lots near Holden Beach. \$5,000 and assume \$23,000 loan.

For sale or lease—3 BR house with fireplace, Wall Street, Shallotte. Possible office location. \$36,500 or rent monthly for \$350.

Shallotte River Lots—\$27,500. Terms.

Shallotte Area—3 BR brick homes. \$38,500 and \$42,500. Outstanding buys and terms.

2-bedroom older home, Hwy 130 near Ash post office. Sale \$16,500.

Lots at Brierwood Estates, Marsh Cove and several other developments.

Two mobile homes lots in Holiday Acres. \$6,000 each.

12-acre wooded tract off Stout Rd., near Ash. \$15,000.

Hwy. 17 commercial lots and property for sale or lease or build to suit.

Mobile home acre lots in new development near Shallotte. \$5,000.

Beach homes, condos, acreage, river and waterway lot.

Highway 179 or 130 business lots. \$10,000 up.

Sherrow Estates—Lots \$3,000 up.

Nice 50-acre farm in Ash/Ekum area. Tobacco acreage. \$85,000.

WRI

MOBILE HOMES

*Sea Trail—14x70 mobile home with custom additions. 3 BR, 3 baths, den, living room, screened porch, beautiful decks. \$64,900.

*Sea Trail—Dogwood Dr., 2 lots 120x150, 14x70 mobile home, 2 BR, 2 baths, washer/dryer, heat pump. \$49,900.

*Sea Trail—Live Oak Dr., 12x60 mobile home, deck, utility building. Priced to sell. \$26,900.

*Sea Trail—2 lots 120x150, 14x70 mobile home, 3 BR, 2 baths, W & D, heat pump, screened porch, cable TV, city water. Super location! \$59,900.

MOBILE HOME LOTS

*Sea Trail—A large selection of wooded lots; cleared and ready for mobile homes! \$11,500 to \$15,000.

*Sunset Lakes—70x200, heavily wooded. \$17,500.

COMMERCIAL

*Calabash East—Several locations to select from. Starting at \$10,000.

*Sunset Beach—Large commercial tract on beach, 2nd row. Call for details! \$750,000.

*Seaside area—Grocery store and gasoline station. Excellent location! Call for more details! \$137,900.

HOUSES

*Sea Trail—3 BR, 2 baths, excellent view of waterway and ocean. \$59,900.

*Sea Trail—Brick, 3 BR, 2 full baths, screened porch, carpet. Excellent location. Shown by appointment. \$77,900.

*Sea Trail—App. 1,450 sq. ft. of heated space. Large screened room, db. garage, stone fireplace, nicely furnished. \$84,900.

*Holden Beach area—New construction, approx. 1,000 sq. ft., 2 BR, 2 baths, screened porch. \$39,900.

*Sea Trail—3 BR, 2 baths, large screened porch, garage/utility bldg., near boat ramp. \$74,900.

*Sea Trail—2 BR, 1 bath, heat pump, 900 sq. ft., well-serviced. \$57,500.

*Calabash East—3 BR, 2 bath home with brick veneer, approx. 1,200 sq. ft. \$49,900.

*Oyster Bay—Beautiful house on lake overlooking golf course. Excellent waterway view. Call for details! \$140,000.

HOUSE LOTS

*Carolina Shores—Patio lot. Excellent condition. \$29,900.

*Sea Trail—Corner lot, fantastic ocean view. Call for details! \$24,900.

*2 lots, each 100 ft. frontage, Hwy 179, Shoreline Drive, Sunset Beach city limits. \$25,000 each.

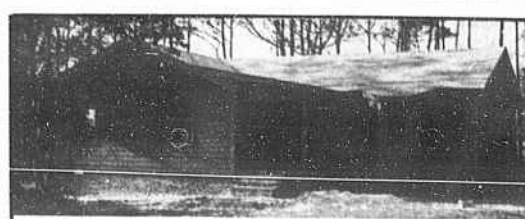
*Intracoastal Waterway—2 lots across from Oyster Bay. Call for details! \$60,000 to \$75,000.

REAL ESTATE
HALF-ACRE LOT for lease on Hwy. 130, Holden Beach Road, 1.3 miles from Shallotte. 164 ft road frontage. Ideal site for small business. Call 475-7934 nights, or write Rt. 3, Box 597 A, Thomasville, NC 27360.

Real Estate
HOLDEN BEACH—1/2-acre restricted homesites near Inland Waterway with boat ramp privileges. \$7,500. Call LANGSTON & WILSON PROPERTIES, 642-8113.

FOR SALE BY OWNER
Condo Duplex, Holden Beach
Brunswick Avenue West, overlooking Intracoastal Waterway. 2 bedrooms, loft, kitchen, separate dining room, 4 decks. Unfurnished. \$62,900.
Call (803)449-1653 ANYTIME

COMMERCIAL
SUNSET BEACH
6 1/2 Lots
Second row, corner Sunset Blvd. and Main St.
WALTERS REALTY
Calabash
Days: 579-9727, 579-9728
Nights: 579-6673



SEA TRAIL—Azalea Circle. Construction almost finished. 3 BR, 2 baths, 1,244 sq. ft. Hurry now and pick your colors. \$82,500.

INLAND WATERWAY—Beautiful view; being remodeled. 3 BR, 3 baths, garage, Couple blocks to marina. \$119,500.

JUST THINK OF GENE WITH THE WIND AND SCARLET O'HARA and picture yourself in this turn-of-the-century-built home on about 5 acres surrounded by Sharrow Creek. 3 BR, 2 1/2 baths, laundry/sewing room, studio/den. Must see to appreciate! \$148,000.

SEA TRAIL—Azalea Circle. Construction about to start. 3 BR, 2 baths, 1,120 sq. ft. \$61,500.

LAKEWOOD ESTATES—New, Doublewide or singlewide mobile homes with deck, underplanned, well and septic, some landscaping. \$31,500 for doublewide, \$29,000 for singlewide.

OYSTER BAY—Overlooking 17th green. Construction has started. 3 BR, 2 baths, 1,930 sq. ft. \$139,900.

OCEAN ISLE BEACH—Cottages on natural canals: 4 BR, 2 1/2 baths, air, \$93,500; 4 BR, 2 bath, \$92,500. Concrete canal cottage: 4 BR, 2 bath, central heat & air, \$109,500.

ISLAND REALTY

BONAPARTE'S RETREAT—Nice, quiet community with pool, tennis courts, paved streets, street lights and city water. 2-BR, 2-bath 1981 Norris Expando. Brick underplanned. \$40,900. Also, 2-BR, 2-bath Northwood, \$30,000.
Phone (919) 579-3599
Ocean Isle Beach

Simply Superior

sales...rentals...service

*NATURAL CANAL LOT, Concord St. Bulkhead and filled. \$57,500.

*CONCRETE CANAL LOT, Craven St. Filled, great view. \$70,000.

*CONCRETE CANAL LOT, on the T. One of a kind. \$97,500.

*SECOND ROW LOT, \$59,000.

*THIRD ROW LOT, \$42,500.

*EAST END LOT, ready to build. \$39,900.

*TRUE BLUE APTS., oceanfront. 3 units, all with central air and furniture. Rents for \$1,275 per week. \$225,000.

*BELL TRIPLEX, oceanfront. Three 2-BR units on a beautiful 75 ft. lot in prime location. \$250,000.

*BICYCLES, oceanfront. 4 BR, 2 baths, furnished, central H/A, new carpet and windows. \$165,000.

*SUBMARINE, oceanfront. Very large 5-BR, 3-bath home on 3 levels, sleeps 22. \$185,000.

*OCEANFRONT, Rental 54. Remodeled 3-BR, 2-bath house. Large deck, new furniture and appliances. \$99,000.

*SOOMAN HOUSE, natural canal. Unique 3-BR, 2-bath house 200 ft. from waterway. Fireplace, central air, bulkhead, floating dock, furnished, never rented. \$139,900.

*ROSEMAN, concrete canal, Newport St., 3 BR, 2 baths, new furniture, fireplace, double garage, very nice. \$139,900.

*ANDERSON, concrete canal, Anson St. with water on 2 sides. 4 BR, 2 baths, furnished, enclosed downstairs with workshop and lots of storage. 75 ft. lot. \$149,900.

*NEW CONSTRUCTION, concrete canal, Raeford St., close to waterway. Huge 5-BR, 4-bath house, just completed. \$154,500.

*SECOND ROW: good ocean view, like new, 4-BR, 2-bath house with loft area. C/H/A, well furnished. \$139,900.

*NEW CONSTRUCTION, third row, 3 BR, 2 baths, loft, heat pump, spiral staircase, large deck. \$112,000.

*DRIFTWOOD DRIVE: spectacular view, over 1,700 sq. ft. in this absolutely beautiful 3-BR, 2-bath home in secluded area. \$139,900.

These are just some of our listings on the Island. We also have extensive listings of condominiums, Intracoastal, golf course and mainland properties. Please contact us for an update.

WALTERS REALTY
Calabash
Days—579-9727, 579-9728
Nights—579-6673

Largest and Most Knowledgeable Real Estate Firm in the South Brunswick Islands

579-3535...at your service!