

Looking For Property? Look In The Beacon!



SEACOAST DEVELOPMENT, Inc.
Holden Beach
 Phone (919)842-6415, 842-6686

NEW LISTINGS!
CAPTAIN'S VILLAS—2 BR, 2 bath cond. 1,032 sq. ft., c/h/a. Excellent rental unit. 2nd row with large sundeck on oceanfront for exclusive use of property owners. All appliances, private balcony off living room overlooks pool. \$77,500 unfurnished.

SEA AIRE CANAL—1,260 heated sq. ft. on deep channel on mainland side of Holden Beach. Bulkheaded lot with large floating dock on canal. 2 BR, 1 1/2 baths, insulated windows and patio doors, 4 covered decks, tremendous view of waterway. \$89,900 furnished.

SCOTCH BONNET DRIVE—New construction. 3 BR, 2 baths, bulkheaded lot on deep canal, c/h/a, all appliances, close to beach, carpeted with vinyl kitchen and baths, covered porches and more! \$107,000.

SWORDFISH DRIVE—Corner lot 112x157 faces waterway. \$41,500 with owner financing.

HOMES AND MOBILE HOMES
OCEANFRONT—Older home, 3 BR, 2 baths, large family room, enclosed 8x32 porch, sundeck, catwalk and deck on the beach. Solar heat and solar water heater. Panelled in solid wood, fireplace, new roof, all floors refinished, enclosed 2-car garage. 12x40 shop area, 10x32 storage area. Plus extra lot with 4-BR septic tank permit. \$127,500.

WATERWAY DUPLEX—1,536 sq. ft. each side. 60x125 lot. Central heat/air, all appliances. 2 BR, 2 baths. Living/dining room downstairs on waterway. Upstairs den and separate living room faces waterway. Enclosed garage. Covered porches on waterway and ocean side. Access to beach. Community pier on waterway. \$79,900, unfurnished, each side. \$84,900, furnished, each side.

MAINLAND HOME—1 mile from beach. 1,500 sq. ft. Lot 120x143, 3 bedrooms, 1 1/2 baths, brick veneer exterior, hardwood floors, recreational deck with outside brick grill, 2 wells, fireplace with blowers, all extras. Outside storage building. \$65,000.

SEASHORE ROAD—2 bedrooms, 2 baths, wrap-around porch, lot size 60x120, beautiful wooded lot, 1,000 sq. ft. Financing to qualified buyer at 12%. \$44,500.

HOLIDAY HAVEN—2 BR, 1 bath 12x60 Broadmore mobile home, self-cleaning oven, completely furnished including bedspreads and window treatment, central heat and air. Pool, tennis court, boat ramp and pier on Intracoastal Waterway. \$23,000. (May be bought with 2 lots).

CHARLOTTE STREET—3 bedrooms, 2 baths, central heat/air, factory oak cabinets, all appliances, 2 covered porches, sundeck and large floating dock, cedar lap siding exterior, cedar walls interior. \$105,000.

2ND ROW DUPLEX—6 bedrooms, 6 baths, located on 60x125 lot. Excellent rental unit. All appliances, central heat/air, large decks on waterway and ocean side. \$97,500 each side.

HOLIDAY HAVEN—2 bedrooms, 1 bath, 864 sq. ft., large corner lot, window air unit, 10x14 deck, storm doors and windows, window treatment included, completely furnished. \$32,500.

BEACH DUPLEX—Brunswick Ave.—2 bedrooms, 1 bath, central heat and air, covered porch, sundeck on ocean side. All appliances, 60x125 lot size. Furnished package—\$55,500. Unfurnished side—\$52,500.

BEACH DUPLEX—Sand Dunes Subdivision on Intracoastal Waterway 2 bedrooms, 2 baths, all appliances. Lot size 60x125. 4 decks with view of the ocean and waterway. Access to pier on Intracoastal Waterway and direct access to beach. Furnished package—\$74,500 each side. Unfurnished—\$69,500 each side.

OCEANFRONT DUPLEX—3 bedrooms, 2 baths, central heat and air, all appliances, beautifully decorated and furnished including window treatment. Great rental unit. \$139,500 each side. Kitchen tools, etc., set for weekly rentals.

SEASHORE ROAD—3 bedrooms, 2 baths, 1,522 sq. ft., large lot 100x245, wood-burning heater, pine lap siding garage, 2 attic fans, central heat & air. One mile from the beach. \$66,500.

SEASHORE ROAD—2 bedrooms, 2 full baths, 14x70, 1982 completely furnished. Many extras—microwave, fireplace with blowers, outside shower, utility building 1/2-acre lot, and fenced yard. \$39,500.

LOTS
SHERRON ESTATES—Restricted subdivision. Shallotte area. Paved streets. 1/2-acre lot \$4,000. 1-acre lot \$7,500.

SHALLOTTE RIVER—2 lots on deep water, 60x125 and 60x133. Restricted to residential homes. \$25,000 each.

DOLPHIN DRIVE—Canal lot with 3-bedroom septic tank permit available. \$41,000.

DUPLEX LOTS—60x125 waterway view. \$37,500 to \$39,500. 60x125 3rd row (beach access). \$32,500.

MOBILE HOME LOTS—\$3,000 to \$9,750. Financing available.

SUBDIVISIONS
QUAIL HAVEN: Only minutes to beach. Large lots size 55x150. Financing 10% down, balance 5 years at 10% simple interest.

VINEYARD LANDING: Surrounded by Lockwood Folly and Royal Oak Rivers, oversized lots on or near water (some with grapevines). Located off Hwy. 17 near Supply. Owner financing. 10% down, balance 5 years at 10% simple interest. Priced from \$4,500.

J Bob Campbell Realty
 Member South Brunswick Islands Chapter of Realtors
 PHONE (919) 842-2698 ANYTIME
 HOLDEN BEACH, NORTH CAROLINA 28462

Benton & Floyd Realtors
 Sales and Appraisals
CAUSEWAY OCEAN ISLE BEACH N.C. 28459
 (919) 579-2704

CARMEL VILLAGE
 An exclusive wooded mobile home development located near Shallotte Point. Minutes from the waterway, the Shallotte River, Ocean Isle Beach, marinas and boat launching facilities, golf courses!! Prices starting at \$6,500. Owner financing, 20% down, 7 years financing at 12%. Highly restricted, small, wooded mobile home development.

CARMEL VILLAGE BY BENTON & FLOYD REALTY
 Commercial lots available on Highway 179 & 904, 100x300 foot lots, 20% down, balance in 5 years. Excellent owner financing available at 12%. Proposed shopping center.

Laurinburg Street—Ocean Isle Beach. 4 bedrooms, 2 baths, 1,100 sq. ft. Treated decks on front and rear of house.

Dare Street—Ocean Isle Beach. 1,864 sq. ft. home located on a T lot. 4 bedrooms, 2 baths. Treated decks front and rear.

Dare Street—Ocean Isle Beach. 1,872 sq. ft. home on a canal. 4 bedrooms, 2 baths, living, dining, kitchen area.

Shallotte River—1,100 sq. ft. home, complete with furnishings.

John Street—Shallotte. 2,000 sq. ft. home located on 2 lots. City water and sewer. Some assumable financing available. Excellent location. \$72,900.

Beach Villas Condominium—Ocean Isle Beach, Oceanfront. 3 bedrooms, fully furnished.

Ocean Isle West—Ocean Isle Beach. Oceanfront, pool, jacuzzi, plus many other amenities. Call for details.

Duneside Villas—Ocean Isle Beach. Fully furnished, one bedroom, \$65,000.

Starboard By The Sea—Ocean Isle Beach. 3 bedrooms, 2 baths, fully furnished including appliances. \$85,900.

Starboard By The Sea—Ocean Isle Beach. Fully furnished, 3 bedroom condominium. \$97,000.

Channel Side—Ocean Isle Beach. 2 & 3 bedroom townhouses and single floor condominiums. A \$5,000 deposit will hold unit til closing.

Holly Acres—Completely furnished, 1,568 sq. ft. mobile home. Brick underpinned. Overlooks Saucenpan Creek. A great buy. Last home on left.

Three-bedroom, 2 bath home, approx. 1,800 sq. ft. on 2-acre corner lot at crossroads in Exum. Two storage buildings. Lovely community.

Ocean View Landing—75x130 foot lot. \$9,450.

Branchwood Bay—12x60 mobile home and lot. A great buy at \$23,500.

Shallotte Point—Now under construction. 3 bedrooms, 2 baths, full garage. Low country design. Breathtaking view of ocean from Point Windward (restricted & private). A must to see. \$84,500.

Little River Farms—Located 1 1/2 miles north of Hickman's Crossroads. A planned subdivision consisting of parcels of land from 1/2 acre to 3 acres. Will consider larger tracts.

Shallotte—8 acres approximately. Located on Highway 179 across from Calvary Baptist Church. Road frontage 371 ft., approximately 875 ft. deep. Inside Shallotte city limits. Has city water and sewer. Excellent development site.

Shallotte Point—3 BR, 2 1/2 bath home, 1,700 sq. ft. with large 2-car garage. Immaculate condition. Located in beautiful Point Windward restricted subdivision. Excellent waterway and ocean view.

We have a complete listing of property at Ocean Isle Beach.

- Bill Benton, Broker (919)579-6995
- Paul E. Floyd, Broker Home (919)754-9221
- Mike Powell, Salesperson Home (919)579-2184
- Bill English, Salesperson Home (919)754-6714
- Elwood Hales, Salesperson Home (919)579-2811

McLAMB Auction and Realty Company
Calabash—
Sunset Beach, N.C.
 Several beautifully wooded lots with paved streets and city water located in Bay Point Subdivision (overlooking Calabash River) on Highway 179 between Calabash and Sunset Beach, N.C. These lots are approved for late model mobile homes. From \$10,000 each! Excellent seller financing with only 5% down. Call now!

Calabash—
Sunset Beach, N.C.
 Brand new 14x70 Fleetwood mobile home completely set up with brick underpinning, heat pump and large sundeck along front and side. This home is located on large wooded lot with paved street halfway between Calabash and Sunset Beach. Must Sell! \$37,500 or best offer. 20 year financing with only 5% down. Call now!

McLamb Realty
 N. Myrtle Beach
 (803)249-3491
 North Carolina
 (919)287-6541

Ocean Side Realty
Ocean Forest
 New home, 1,456 sq. ft. Three bedrooms, 2 baths, central heat and air, carpeted throughout. On nice lot in the pines. Cedar siding. \$58,500.

Lots \$10,900 to \$12,900.

Bonaparte's Retreat I
 Nice large lot, \$13,995.

Mobile home with expando, 2 bedrooms, 2 baths. Excellent location. Access to swimming pool, tennis court, etc. \$39,900.

Lots \$9,900 to \$15,900 for manufactured homes.

New home, 1,026 sq. ft. Two bedrooms, 2 baths, central heat and air, carpeted, aluminum siding. \$48,600.

Bonaparte's Retreat II
 3 nice lots. \$13,500 to \$14,300.

Sea Village
 1982 Champion mobile home, 12x60, with lot. 2 BR, front kitchen, utility building. \$23,500.

Very clean mobile home with screened porch, 2 bedrooms, 1 bath, large landscaped lot, access to swimming pool. \$29,900.

Nice lot. Has well and septic system. \$6,995.

Landing Two
 Brick 4-year-old, 3 BR, 2 baths, den, sewing room, screened porch, low taxes. \$78,900.

Brick and wood, 2 BR, 2 baths, den with fireplace, screened porch, fenced yard. \$65,000.

Pier 66
 Beautiful waterfront lot, Station I. \$24,500.

Lot with view of bay, Station I. \$17,900.

Very nice lot, Station II. \$8,900.

Lots \$6,900 to \$24,900. Restricted sections for conventional homes, doublewide homes and singlewide homes.

Lakefront lot, Station I. A bargain at \$15,900.

Calabash Acres
 Lake front lot \$12,900.
Carolina Shores North
 Very nice lot, 100x200. \$13,900.
OFFICE: Box 668,
Calabash, N.C. 28459
Phone 919-579-2141
or 919-579-3737

HOLDEN BEACH AREA SHELL POINT ACRES
 12x45 mobile home on 70x100 wooded lot. Furnished with appliances.
Phone 842-9114

sloane realty
 579-6216
 579-6217

OCEAN ISLE BEACH N.C. 28459

OCEANFRONT LOTS AVAILABLE \$150,000

OCEANFRONT CONDOMINIUMS
 Variety of oceanfront condominiums available, NEW, previously owned and units under construction. One to three bedrooms, priced \$64,500 to \$189,500.

OCEANFRONT HOUSES
NEW LISTING—5 BR, 3 baths, additional large loft BR, c/h/a, fully carpeted, large kitchen with appliances, unfurnished. \$150,000.

UNDER CONSTRUCTION, OCEANFRONT DUPLEX—114 East 1st St. \$198,500 each side.

3 BR, 1 1/2 baths, c/h/a, carpeting, fireplace, all appliances, washer/dryer. Owner anxious to sell. \$55,000.

BEACH BARN—7 BR, 4 1/2-bath home, an OIB rental favorite. Fully furnished, all appliances. Best built house on the beach. Annual rental income is phenomenal as it rents all seasons. \$275,000.

HALF OF DUPLEX—6 BR, 3 1/2 baths, c/h/a, carpet, washer/dryer, dishwasher, fully furnished. \$210,000.

BEAUTIFUL 6-BR, 3-bath cottage with all glass across ocean side, beautifully furnished. Never rented, but could be excellent rental investment. \$250,000.

THIRD & FOURTH ROW HOUSES
CATES HOUSE—Unique 4 BR, 2 baths, c/h/a, fireplace, wet bar, loft den, partially furnished. Great view of waterway. \$150,000.

HOSTELER—Fully furnished 3 BR, 2 bath year round home. Great room with designer kitchen and window treatments. Secure neighborhood with fantastic ocean and waterway-inlet view. Never rented. \$94,000.

HAMMOND—2 BR, 2-bath house with beautiful view. All major appliances, nicely landscaped with concrete underneath. Never rented but in great rental location. \$74,500.

CANAL HOUSES
FAIRMONT STREET—4 BR, 2-bath house with concrete underneath. Remodeled kitchen, new roof. New carpet and c/h/a, furnished. \$105,000.

DARE STREET—Under construction. 3 BR, 2 1/2-bath home with loft, den, cathedral ceiling & fan in living room, floating dock, roof-top deck. \$133,000.

CORNER 2nd & RICHMOND STREETS—4 BR, 2-bath home on T of canal facing ocean. C/h/a, all appliances. Excellent condition. \$150,000.

MAINLAND PROPERTIES
Choice lots at Brierwood Estates.

Bent Tree. The South Brunswick Islands' newest restricted waterway development. See us for complete details on this truly unique community!

Crown Creek—New 3-bedroom, 2-bath house. Central heat and air, carpeted, all kitchen appliances, fireplace, large master bedroom with dressing area and walk-in closets. Wooded lot, access to dock. \$78,500.

We have many other island properties for sale, along with building sites and retirement homes on the mainland. Please call for a complete sales list.

FULFORD REALTY HAS MOVED!
 Look for our sign at our new location on Hwy. 130 at the Holden Beach Causeway.
 We specialize in selling inland, beach and commercial properties. Let us serve you.
Phone 842-2692
 John Hewett BROKER Kathryn Fulford BROKER Kathy F. Galloway SALESPERSON



Marsh Cove
 Lovely new 3-BR, 2-bath home. Master bath has sunken tub and glass enclosed shower. Large loft room, walk-in closets, bay windows overlooking lake, fireplace, ceiling fans, 2 heat pumps, screened porch with serving window from kitchen. Continuous-cleaning range, 20 cu. ft. refrigerator, dishwasher. Landscaped yard, 825 sq. ft. of porches and decks. \$104,900.

Sand Dollar REALTY
Ocean Isle Beach Causeway
 Phone 579-7038
 Evelyn Madison 754-6713
 Gordon Ragsdale 579-9266
 Merlin Boone 579-3408
 Al Newton 579-7804
 Nick Newton 579-7804
 ©1985 THE BRUNSWICK BEACON

COOKE REAL ESTATE

FROM OCEANFRONT TO MAINLAND HOMESITES

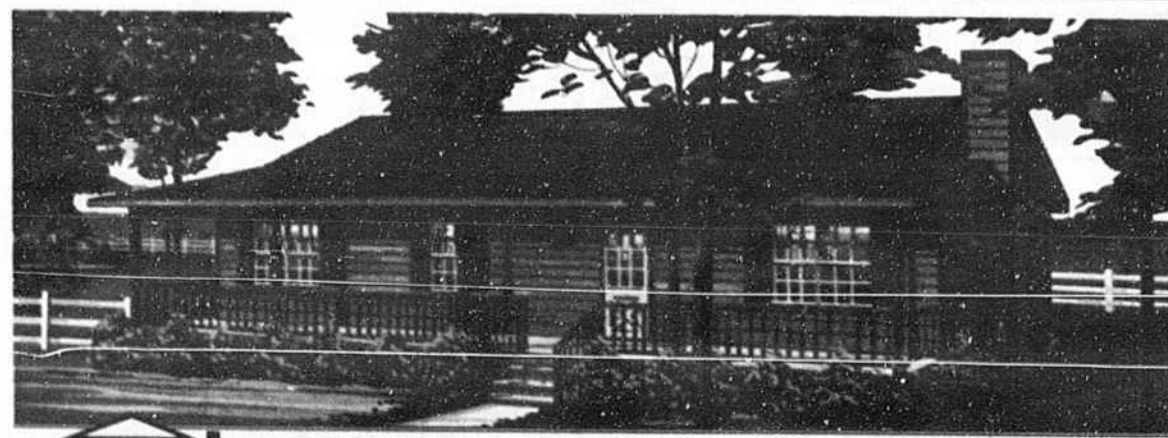
- SEA TRAIL**—Beautiful subdivision. 3-BR, 2-bath home on the water. Architecturally designed. Must see! 1,400 sq. ft. \$69,900
- MARSH COVE**—Beautiful Shallotte River Subdivision with clubhouse and lake. Lots from \$10,500 to \$22,500. Houses from \$89,900.
- SHALLOTTE POINT**—Rustic setting. Duplex, great income producer. Over 1,700 sq. ft. \$84,500.
- OCEAN ISLE BEACH**—View condominiums from \$59,900 up.
- BEACH COTTAGES**—Built or to-be-built. Starting at \$74,900

WE DESIGN, BUILD, AND SELL HOMES
FREE COOKE TOURS
 9 AM until 5 PM, seven days a week.

COME BY OR CALL TODAY! BRING THIS AD FOR \$100 OFF YOUR NEXT PURCHASE!!!!

Office located on Hwy. 179 between Sunset and Ocean Isle, Rt. 6, Box 163, Seaside, NC 28459.

PHONE (919)579-9822



cmh CAROLINA MODEL HOMES CORPORATION Introducing "The TIMBERLINE"
An appreciation of the quiet and comfortable life...
 Consider the substantial savings available by completing all or part of the interior yourself, thereby cutting out material and labor costs...
Lower monthly payments.
No money down to qualified land owners.
20 year financing available at 12%.

Yes, I would like more information about "The TIMBERLINE". Do you own land?
 Name _____
 Address _____
 City _____ State _____ Zip _____
 Phone _____ If your address is a rural route number, please give clear directions in this space.
 Call: Wilmington 392-7111 for information
 Mail to: Carolina Model Homes
 6738 Market Street
 Wilmington, NC 28405