

'Peak Day' Figures Reveal County's Highest Population

BY TERRY POPE

While the county's permanent population stands at close to 48,000 residents, more than 133,000 persons may have spent the night in Brunswick County during the fourth of July weekend.

According to the 1985 Peak Day Population report compiled by the Brunswick County Planning Department, the county's population during a typical "peak day" has increased by more than 26,000 persons since the figures were first gathered in 1983.

The 133,529 "peak day" estimated population for 1985 also represents an 11,000 to 13,000 increase over last year's estimate, said County Planning Director John Harvey. Some members of the county planning board believe that although the figures reflect tremendous growth, they may still be just "conservative estimates," Harvey said.

"We used July 4th as our 'peak day,'" Harvey said. Collection of information was closely coordinated with

county beach municipalities by planning assistant Don Eggett.

Care was taken in gathering the information to exclude the daytime population that did not stay overnight during the fourth of July holiday, Harvey reported. July 4th was chosen as the "peak day" because it is believed that more people are in the county on that date than at any other time.

In 1983, the "peak day" population was estimated at 107,000 persons. Last year, the figure grew to 122,000 persons and to more than 133,000 this summer.

According to Harvey's report, delivered to the planning board members, a formula for obtaining the figures was developed while working with area municipalities, setting average number of persons per housing unit along the beaches, and moving inland along the Intracoastal Waterway and mainland.

"Among those interviewed were realty firms hand-

ling rental units, as to number occupied and their estimate of average number of persons per unit, mayors, chiefs of police, town managers-administrators, the sheriff's office and the State Highway Patrol," Harvey's report stated.

Throughout 1985, several beach towns have been compiling "peak day" figures to update their Coastal Area Management Act (CAMA) land use plans. If those figures were available, they were used for the county report, Harvey said.

The "peak day" figures will be included in the county's CAMA land use plan, to show recommended support systems for the maximum population, including water and transportation needs, Harvey said.

According to the figures, the permanent resident population in 1985 of the 14 municipalities, including Bald Head Village, was 11,116 persons while the "peak day" population was 65,234 persons.

Outside of municipalities, a permanent population of 37,413 persons was recorded while the "peak day" population swelled to 68,295.

A comparison of the municipalities' permanent populations and peak day populations are as follows:

- Bald Head Village 0 to 680;
- Belville 102 to 190;
- Boiling Spring Lakes 1,321 to 1,672;
- Bolivia 268 to 314;
- Calabash 166 to 326;
- Caswell Beach 265 to 1,193;
- Holden Beach 323 to 9,163;
- Long Beach 2,593 to 27,097;
- Navassa 509 to 579;
- Ocean Isle Beach 487 to 9,967;
- Shallotte 751 to 826;
- Southport 1,384 to 4,500;
- Sunset Beach 522 to 6,226;
- Yaupon Beach 693 to 2,501.

Change To Require Actions Within 90 Days Of Hearing

BY TERRY POPE

Holden Beach officials are considering a new policy that would require the town to take action on all amendments to the zoning ordinance within 90 days of a public hearing.

The ordinance change received unanimous recommendation of the Holden Beach Planning and Zoning Board on July 16 and will now go to the town council for consideration. Town Administrator Bob Buck said the council is expected to set a public hearing date for the ordinance change when it meets Monday night in regular session at the town hall.

The matter was referred to the planning board last month upon the commissioners' request, Buck said. It was initiated following public comments on the recent rezoning of the old "State Park property" on the island.

On May 23, the council voted, in special session, to expand its agenda and to rezone some 13 acres on the east end of the beach from R-1 residential to R-2 residential, allowing for multi-family units. The board was criticized for acting on the rezoning request nearly three years after a

public hearing was held on the matter and for doing so at a special meeting.

North Carolina law does not specify the amount of time permitted between a public hearing and how soon the board must act on a request. The new ordinance would be the first

such time that a restriction has been placed on the town of Holden Beach in considering amendments to the zoning ordinance.

Buck said he does not know if other towns have time limits placed on how soon the board should act on rezoning requests or amendments to the zon-

ing ordinance. "I've never ran into anything like this before," Buck said. "But if the board feels like it is needed and they recommend it, then so be it."

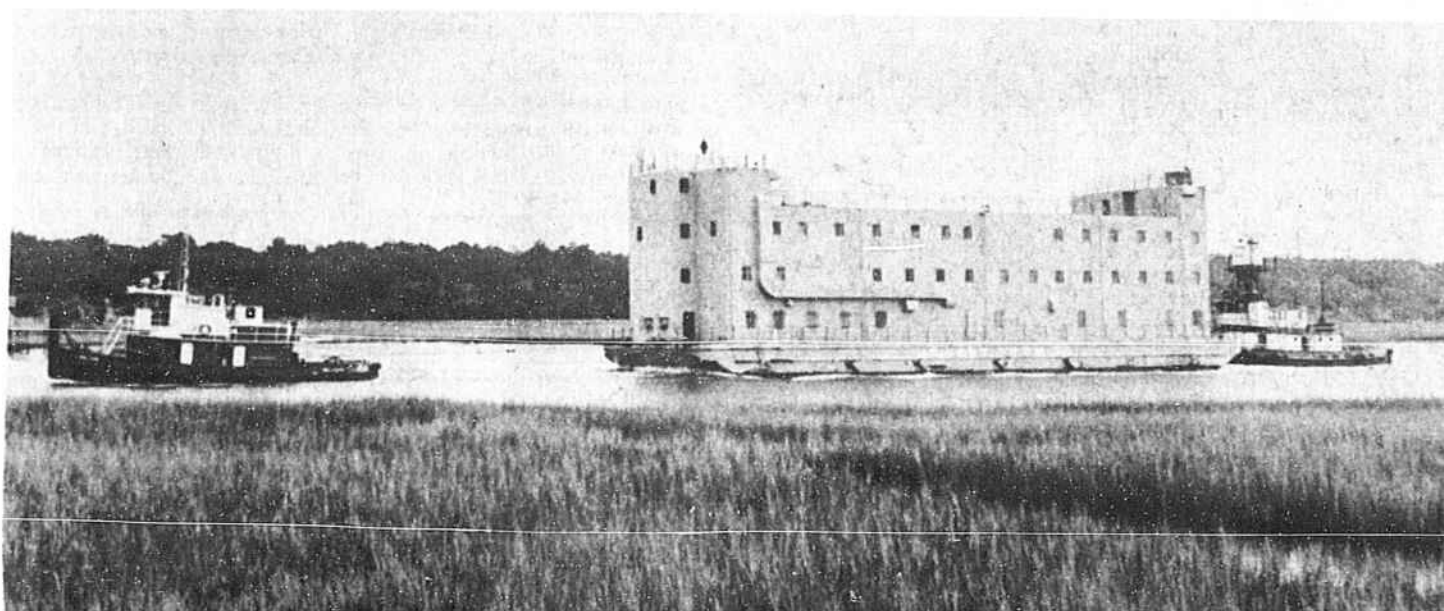
At the July 8 town council meeting, Commissioner Jim Griffin stated the board "acted in good faith, everything was checked in advance and everything was perfectly legal" regarding the rezoning of the old State Park property. Griffin was excused from the vote since he has an interest in the tract of land owned by Holden Beach Realty.

However, Griffin also asked that the planning and zoning board consider amending the zoning ordinance to clear the confusion regarding the allowed time between public hearings and actions taken by the town council. Griffin asked that the planning board report their recommendations to the town council.

In regular session July 16, the planning board unanimously recommended that the town adopt an amendment to the ordinance requiring the town to take actions on zoning amendments that go before a public hearing within 90 days.

The planning board has also recommended that the town adopt a new "pet ordinance," Buck said. The current "pet ordinance," which covers the regulation of pets on the beach, needs revision, he added.

The new pet ordinance has not been compiled, but it will go to the council for approval when it is complete.



Barging Through

From a distance, it looked like a floating prison, but actually it was a large Navy barracks barge that passed along the Atlantic Intracoastal Waterway last Friday morning. The barge had earlier run aground Wednesday evening

in the waterway just south of the Figure Eight Island bridge. This photo was taken from High Point Street on Holden Beach as the barge headed south, with no reported incidents in Brunswick County.

STAFF PHOTO BY TERRY POPE

IS THAT ALL IT COST TO RENT

99¢ Movies
\$2 Movies
\$3 Movies

Limited Offer
FREE
MOVIE CLUB
MEMBERSHIP
When You Rent
A VCR at
BLAKE'S

WATCH A GREAT
MOVIE
IN YOUR HOME
TONITE!!!!

\$9.95
MOVIE CLUB
MEMBERSHIP

HUNDREDS
OF MOVIES
IN STOCK

New Hits Daily!

BEFORE YOU RENT
CHECK BLAKE'S
PRICE, QUALITY
and
SELECTION!

COLOR TV'S
VCR'S
STEREO'S
MOVIES
MOVIE CLUB
& HIT MOVIES
Join Now!

BLAKE'S

RENT-TO-OWN
Main Street
SHALLOTTE
754-4285
S. Madison
WHITEVILLE
642-0204
251 S. Kerr Ave.
WILMINGTON
395-1000



SEASIDE, NORTH CAROLINA

©1985 THE BRUNSWICK BEACON

August Calendar of Events!

Day Care Days

Each Friday in August we will have a Day Care Day from 8:30 a.m. until 5:30 p.m. The cost is \$5 which includes: skating, hot dog and drink.

FOR INFORMATION CALL 579-7298

Birthday Party

\$40—minimum of 10 people, \$3 each additional person. Includes: admission, skate rental, cake, drink and hot dog.

FOR INFORMATION CALL 579-7298

| SUNDAY | MONDAY | TUESDAY | WEDNESDAY | THURSDAY | FRIDAY | SATURDAY |
|--|--------------------------------|---|--|---|--|--|
| August Thought: "It takes more muscles to frown than it does to smile." | SKATING IS GOOD EXERCISE!! | Buy any pair of skates during August and receive a 10% discount!! | Are you on our mailing list? If not, be sure to sign up today. | "LADIES NIGHT" \$1 admission for ladies. 7-10 p.m. | "DAY CARE DAY" 8:30-5:30 p.m.—\$5 "TOP 40 NIGHT" 7-11 p.m. | Group Skate Lessons \$2—2-3 p.m. 3-6 p.m. open skate Couples Special—\$5 7-11 p.m. |
| "SOUL SKATING" 6-9 p.m. "SOUL DANCE" 9:30-1:30 | "CHURCH SKATE NIGHT" 7-10 p.m. | "DOLLAR NIGHT" \$1 admission 50¢ skate rental 7-10 p.m. | "CAR LOAD NIGHT" \$5 admission (maximum 5 people) 7-10 p.m. | "COUNTRY AND WESTERN NIGHT" 7-10 p.m. | "DAY CARE DAY" 8:30-5:30 p.m.—\$5 "SPECIAL REQUEST NIGHT" 7-11 p.m. | Group Skate Lessons \$2—2-3 p.m. 3-6 p.m. open skate Couples Special—\$5 7-11 p.m. |
| "SOUL NIGHT" 7-11 p.m. | CLOSED | "DOLLAR NIGHT" \$1 admission 50¢ skate rental 7-11 p.m. | "CAR LOAD NIGHT" \$5 admission (maximum 5 people) 7-10 p.m. | "ORANGE NIGHT" Wear something orange—get in for \$1 7-10 p.m. | "DAY CARE DAY" 8:30-5:30 p.m.—\$5 "HAWAIIAN NIGHT" Wear flowered shirt—Get in for 1/2 price 7-11 p.m. | Group Skate Lessons \$2—2-3 p.m. 3-6 p.m. open skate Couples Special—\$5 7-11 p.m. |
| "SOUL NIGHT" 7-11 p.m. | CLOSED | "DOLLAR NIGHT" \$1 admission 50¢ skate rental 7-10 p.m. | "CAR LOAD NIGHT" \$5 admission (maximum 5 people) 7-10 p.m. | "PARENTS NIGHT" Free admission to all parents 7-10 p.m. | "DAY CARE DAY" 8:30-5:30 p.m.—\$5 "SPECIAL REQUEST NIGHT" 7-11 p.m. | Group Skate Lessons \$2—2-3 p.m. 3-6 p.m. open skate Couples Special—\$5 7-11 p.m. |
| "SOUL NIGHT" 7-11 p.m. | CLOSED | "DOLLAR NIGHT" \$1 admission 50¢ skate rental 7-10 p.m. | "CAR LOAD NIGHT" \$5 admission (maximum 5 people) 7-10 p.m. | "COUNTRY AND WESTERN NIGHT" 7-10 p.m. | "DAY CARE DAY" 8:30-5:30 p.m.—\$5 "ENVELOPE NIGHT" Self-address a stamped envelope and receive a free pass. 7-11 p.m. | NO SKATE LESSONS 6-9 open skate "BACK TO SCHOOL DANCE" 9:30-12 p.m. |