

Industry-Seeking Activities Could Begin Pay-Off Soon

BY SUSAN USHER

County commissioners met behind closed doors at mid-day Tuesday with Brunswick County's chief industry hunter to talk about "industrial locations" for approximately an hour, taking no action.

Michael deSherbinin, executive director of the Resources Development Commission for Brunswick County, said the executive session was held for the purpose of discussing "matters relating to the location or expansion of industries or other businesses" in the county, as allowed under the state's Open Meeting Law. "We hope to have some industry in here sometime soon," District 2 Commissioner Herman Love said later Tuesday. "We think we'll have an announcement Monday night or at least we hope in the very near future we'll have something to tell the people that's good."

His optimism reflects that of deSherbinin, who said Monday night several years of development effort should begin paying off as grant funds and other sources of financial backing provide the services and facilities needed before industry will choose to locate in the county.

At least three industrial prospects are known to be in varying stages of negotiation.

At a meeting of the Resources Development Commission Monday night, deSherbinin told members that he hoped to hear from the state by the end of the month and "possibly sooner" on whether the county's application for a \$750,000 Small City Community Block Grant had been approved.

The county plans to loan \$735,000 of the money to Carolina Caribbean Carriers Inc., a firm that hopes to begin in early November weekly service from Eagle Island to Puerto Rico of containerized products. It would repay the loan to the county over an eight-year period, with the funds to be used to finance other development projects. The company also must hire a specified number of low- or moderate-income employees from within the county.

"I talked with the state today," deSherbinin said Monday. "They said our application is under review favorably."

Also, a South Carolina firm is continuing to express interest in the old Smith-Douglas Fertilizer plant site at

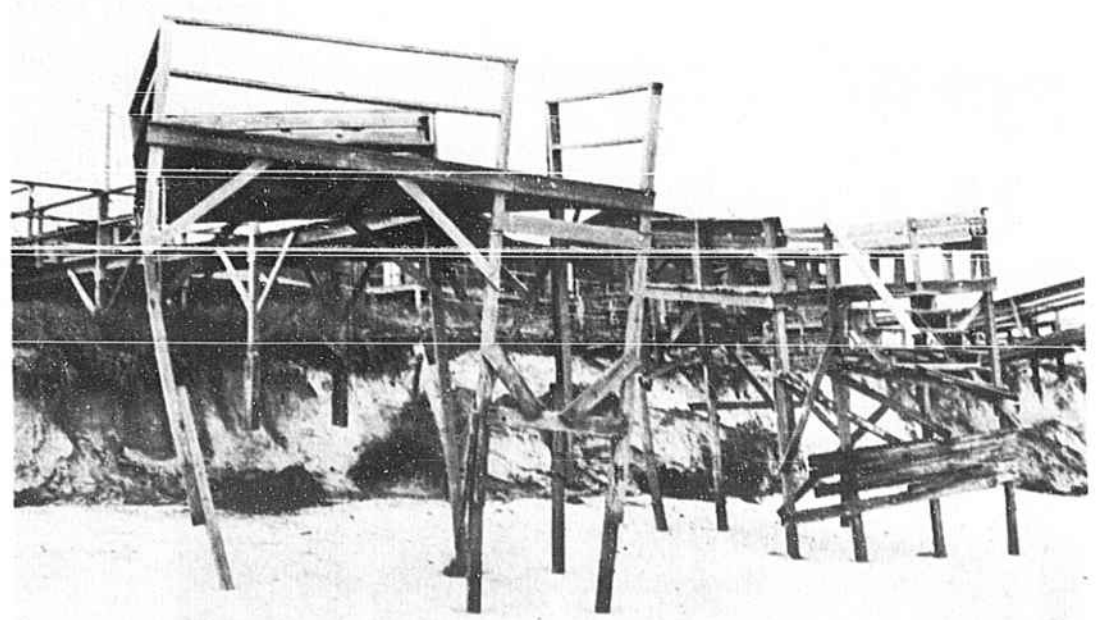
Navassa, though not in the structures remaining there. A structural analysis reviewed by the Resources Development Commission Monday night indicates, member Leo Johnson read out loud, that it is "doubtful the superstructure could be restored to usable condition economically."

deSherbinin said he expects the firm to negotiate further, with a new offer to the holders of the property.

"The problem is that Smith-Douglas views it (the structure) as an asset while this report views it as a liability."

Also, Bregoil Sponge International Inc. is still negotiating toward locating production facilities near Navassa, having asked Miller Building Corp. for cost estimates for a facility that would be constructed around the production layout of its equipment. The firm, which makes cellulose sponges that soak up oil and toxic wastes, has been seeking additional sources of financial backing before committing itself to locating here.

Also improving the county's industry-seeking position is the receipt recently of a \$750,000 grant from the Economic Development Administration for development of an "industrial corridor" between the developed section of the Leland Industrial Park and Navassa, where the Brunswick County Resources Development Corp. holds fee-simple title to about 82.5 acres. They plan to use the grant to improve the site's attractiveness to industry. When completed, the site will have rail spur, access road, natural gas and water and a wastewater treatment plant. A new industry or an industry expanding to a new location would be acceptable for locating there, but not a company that is shutting down a plant elsewhere.



STAFF PHOTO BY EDDIE SWEATT

Ocean Undermines Decks

Unusually high tides and strong winds Saturday night undermined a number of walkways and decks near the 260 section of Ocean Boulevard West at Holden Beach. One property owner in the area estimated that about 12 feet of dune was washed away in a stretch in front

about ten oceanfront cottages. The east end of the beach suffered some erosion as waves undermined a section of Ocean Boulevard East, which collapsed a few feet of pavement.

Shooting Death Ruled Suicide

A gunshot wound that killed a Brick Landing man found dead Sunday was apparently self-inflicted, according to the Brunswick County Sheriff's Department.

"The coroner and the medical examiner are in agreement with this department that it appears to be self-inflicted gunshot wound to the head," said Detective Lindsay Walton. "We've got evidence we've sent to the lab for examination."

Theodore (Ted) Kinlaw was found in the dining area of his mobile home in the Brick Landing area around 1 p.m. Sunday.

He had been shot with a 12-gauge shotgun loaded with buckshot, Walton said, and may have been

dead since "possibly late Friday."

Kinlaw, in his mid-50s, had not been seen since Friday afternoon, Walton said, and the neighbors became concerned.

"A neighbor looked through the window and saw him lying in the floor,"

Deputy Larry Jones called Walton in to investigate.

Shallotte Man Flips Vehicle

Loren Michael Mankin Jr., 16, of Shallotte was charged with exceeding safe speed Wednesday by the N.C. Highway Patrol after his vehicle ran off the road and flipped over.

The accident occurred at 3 p.m., three tenths of a mile south of Bolivia on rural unpaved road 1345.

Mankin was driving an '82 Mercury at approximately 75 m.p.h. when he ran off the end of the paved road onto dirt and lost control of the car.

Trooper B.C. Jones investigated the accident.

The car received \$5,000 worth of damage.

Bomb Threat Was Unfounded

A bomb threat at Leland Middle School Monday morning proved to be unfounded following a search of the school library, Sheriff John Carr Davis said.

Officers searched the library thoroughly after receiving a call at 9:57 a.m. that a bomb had been placed "behind the books," he said, but found no destructive devices.



Deli Specials

HAMBURGER & SMALL COKE 99¢	SUB SANDWICH w/onions & peppers \$1.89
BEER SPECIALS—	
BOTTLE BUD	6 PACK \$2.99
	12 PACK \$5.99
BREAKFAST SAUSAGE BISCUITS	
	2 FOR 99¢
HAMBURGERS - 79¢	LUNCH SPECIAL
CHEESEBURGERS - 89¢	\$2.2,

Oasis Deli

HWY. 130, SHALLOTTE, 754-6727



King's

Junction Hwy. 17 & 211

HARDWARE & APPLIANCE

OVER 18 YEARS EXPERIENCE SERVING GE MAJOR APPLIANCES.

Mon.-Sat.
7-5:30
754-6138



Lay Away NOW for Christmas

JEM 22E	\$260 ⁰⁰
JEM 2	\$199 ⁰⁰
JEM 31	\$315 ⁰⁰
JEM 10	\$248 ⁰⁰

With Special Prices



446⁰⁰
SPACEMAKER® MICROWAVE OVEN
Replaces existing range hood. Built-in exhaust fan and cooktop light. Time or temperature cooking. Cook Code™ control and Auto Roast.



425⁰⁰
SPACEMAKER® MICROWAVE OVEN
Replaces existing range hood. Built-in exhaust system with two-speed fan. Time or temperature cooking. Variable power levels.



550⁰⁰
GE COUNTERTOP OVEN — COOKS THREE WAYS
Electronic touch controls. Cooks three ways by time and temperature: Microwave, Convection or Combination—uses both for speed and browning.



425⁰⁰
SPACEMAKER® MICROWAVE OVEN
Replaces existing range hood. Built-in exhaust system with two-speed fan. Time or temperature cooking. Variable power levels.



284⁰⁰
NOW! FIVE YEAR LIMITED WARRANTY
Dual Wave microwave system designed for good even cooking results. Spacious 1.4 cu. ft. oven cavity. Auto Roast Feature. 5 year limited warranty—carry in service (parts and labor). See warranty for details.



284⁰⁰

GECC FINANCING AVAILABLE • FULL LINE SERVICE DEPARTMENT



25" Diagonal CONSOLE COLOR TV
MODEL 25P9877
799⁰⁰

- Neo-Vision™ Picture System delivers high contrast, rich colors
- VTR II Tracking System continually adjusts color
- Direct channel selection or channel by channel scan remote control
- Channel Block-Out™ System for selective viewing control
- 10-watt™ stereo amplifiers and Sound Plus™ System
- 130-Channel cable connection ready electronic tuning
- Easy multiple video-audio hook-ups



19" Diagonal PORTABLE COLOR TV
MODEL 19P10704
295⁰⁰

- High Contrast picture tube gives blacker blacks and richer colors
- Color Monitor™ system automatically adjusts color
- Woodgrain finish on high impact plastic



19" Diagonal PORTABLE COLOR TV
MODEL 19P10710W
320⁰⁰

- Keyboard channel selection or channel by channel scan tuning
- 112-Channel cable connection ready electronic tuning
- High Contrast picture tube
- Color Monitor™ System automatically adjusts color
- 1.5-watt audio amplifiers for excellent sound