

Trash And Treasure Sale Starts Saturday

Coastline Volunteer Rescue Squad will hold its eighth annual Trash and Treasure sale this weekend beginning at 8 a.m. Friday at the squad building on Highway 130 near Holden Beach. It will continue Saturday, beginning at 8 a.m., and Sunday at 2 p.m.

Also on Sunday, the group's monthly no-charge blood pressure and diabetes detection clinic will be held from 2-4 p.m.

The sale is the principal source of revenue for the volunteer squad. Members point out the name of the event is not connected with the newly-named Trash and Treasure mall across the street.

Cakes and cookies will be sold by volunteers during the sale. Local residents who want to contribute baked goods to this portion of the sale may bring them anytime during the weekend.

Revival Planned

A camp meeting style revival is planned at Zion's Church on Highway 179, July 10-12 at 7:30 nightly.

Speaker will be the Rev. C.W. Woodell Sr., and there will be special singing each night. Friday night meeting will feature the Cedar Grove Choir.

Baptizing will take place July 13 at 2 p.m. at Brickland.

The public is invited.

The Churches of Christ
Salute You — Romans 16:16
The Shallotte Church of Christ invites you to worship with us on Sunday.
10 AM Bible Study
11 AM Worship Service
American Legion Building
Hwy. 17
One Mile South of Shallotte

You Are Invited To Worship With Us
East Side Assembly
NON DENOMINATIONAL
Sunday, 10 AM, 7 PM
Wednesday, 7 PM
Village Rd. Across from Shallotte Dry Cleaners
Pastor, Bobby Causey

Plans Busy July 5th

Members of the Young Adult Choir at Lettie's Grove Pentecostal Freewill Baptist Church in Shallotte plan a car wash, yard sale and hotdog sale Saturday, July 5, beginning at 8:30 a.m.

The car wash will be located across from Hardee's in downtown Shallotte, while the yard and hotdog sales will be held at King's Plaza on N.C. 179 at Seaside.

All proceeds will benefit the church's music department.

After 110 years of ministry to the area, Little River United Methodist Church in Little River, S.C., has attained station status.

In another reflection of its growth, beginning Sunday, July 6, two worship services will be held on Sunday, at 8:30 a.m. and 11 a.m. with church school at 9:45 a.m.

Since the first mission was established in December 1876, Little River has always been associated on a charge with other area churches, most recently with Ebenezer and Wanpee. These have been moved to the Loris circuit and a new pastor assigned them.

Preparations for the change to station status included acquisition of a church parsonage in 1985 and the addition of offices and landscaping at the church. Rev. Frank Hartsell is pastor.

Little River United Methodist Church
Franklin D. Hartsell, Pastor
Worship: 8:30 AM-11:00 AM
Church School: 9:45 AM
Nursery provided at 11 a.m. service
Hwy. 17, Little River
803-249-2329

GAINS STATION STATUS

Little River Church No Longer On Charge

Since January 1985, the church has added 51 full members, three affiliate members and eight preparatory members. Average attendance has increased from 113 to 165.

The church's ministry is facilitated

by several groups including the church and youth choirs, men's, women's and youth fellowship organizations, a weekly Bible study group and a Young at Heart group for senior citizens. Through these groups services are extended into the com-

munity through church participation in Meals on Wheels, Helping Hand Crisis Line, Community Blood Drive and Transient Aid. The church also participates in an ecumenical Vacation Bible School and the North Myrtle Beach Ministerial Alliance.

A Report On Home Health Care

WE GO TO THE MOON FOR OUR PATIENTS

Since July 1, 1981 Comprehensive Home Health Care has traveled a distance equal to the moon and back eight times and four times around the world.

Wherever we are needed, from Bald Head to Bunnlevel, Maxton to Morehead, CHHC nurses, therapists, home health aides and ambulances deliver care and comfort.

In 1985, CHHC made 63,000 home visits. In 1986, we will make over 100,000 visits and travel 1,500,000 miles. That's a trip to the moon and back three times.

Ask your doctor or hospital social worker about CHHC or call and we will send you more information.



COMPREHENSIVE HOME HEALTH CARE
Five Years of Home Health Care
Delivering Care and Comfort To Your Home

Comprehensive Home Health Care • Wilmington 343-0938
Fayetteville 323-2423 • Jacksonville 577-1600 • Supply 754-8133
Whiteville 642-5808 • NC WATS 1-800-438-1115

NOW OPEN THE MASTER'S TOUCH

CHRISTIAN BOOK STORE



- Bibles
- Christian Books
- Albums/Cassettes
- Cards
- Gift Items
- Church Supplies

512 BRUNSWICK SQUARE VILLAGE
SHALLOTTE, 754-7250

JULY 4th SALE

THRU SATURDAY

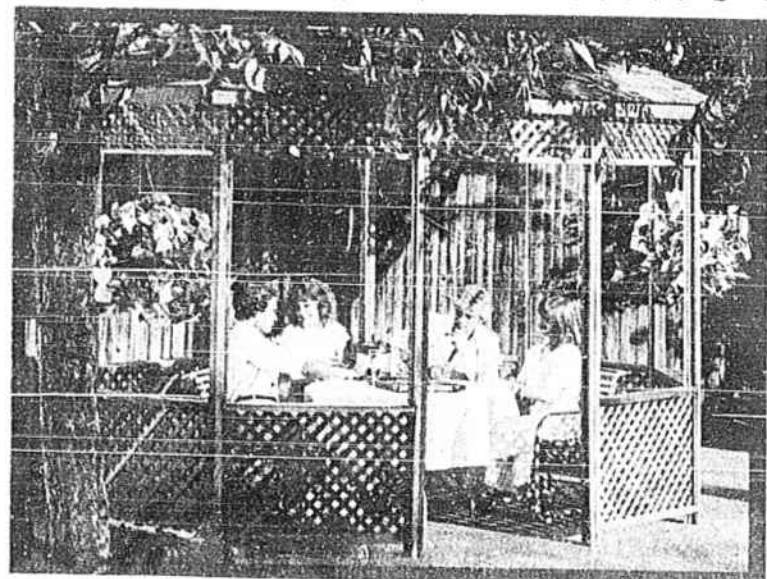
CLOSEOUTS

37 squares Tamko Grey Blend Shingles (Reg. \$23.50)	CLOSEOUT	\$18 ⁵⁰
23 squares Rampart Aspen Gold (Reg. \$35.00)	CLOSEOUT	\$25 ⁰⁰
20 squares Elk Prestique II (Reg. \$47.00)	CLOSEOUT	\$40 ⁰⁰
22 squares Timberline G.A.F. (Reg. \$65.00)	CLOSEOUT	\$45 ⁰⁰
Miscellaneous Cabot Stain		\$9 ⁵⁰ GAL.
Miscellaneous Trim Kits	AS LOW AS	\$10 ³⁹
1 Croft Full-View Storm Door		\$65 ⁰⁰
Single Track Storm Windows		\$12 ⁰⁰ EACH
Binnings Single Hung Windows	AS LOW AS	\$28 ⁰⁰ EACH
Perrico Patio Doors	6' \$170 ⁰⁰ 8' \$190 ⁰⁰	
Precut Door Casing		20¢ LFT

DAMAGED

Damaged Interior Door Units		\$20 ⁰⁰ EACH
Damaged Sheetrock (4x12)		\$6 ⁷⁰ SHEET
Damaged Sawtooth Siding		\$14 ⁰⁰ SHEET
Damaged 4x9" Cedar Siding		\$18 ⁰⁰ SHEET

Landscape Timbers	\$2 ⁸⁹
Packaged Paneling	\$12 ⁶⁰ PKG
Treated Lattice (4x8)	\$12 ⁹⁰
Cedar Lattice (4x8)	\$14 ⁰⁰
Decorator Block (12x4x12)	\$1 ⁸⁰ EACH
New Turf Stones (24x4x16)	\$3 ⁰⁰ EACH



J.M. PARKER & SONS, INC.

Hwys. 17&211
In Supply

754-4331