

# County Hears Requests, Begins Budget Review

**BY SUSAN USHER**  
Brunswick County Commissioners heard requests Monday night for more than \$160,000 in contributions from their 1987-88 budget. Acting County Manager David Clegg also told them a "working" budget would be available the following day. Commissioners were to meet at 5 p.m. May 20 for their first overview of the budget. They expect to begin work sessions later in the month. In a change from past procedure, the budget will be shaped into draft form by commissioners before going to public hearing, rather than the other way around, budget consultant and former county manager Billy Carter and Finance Officer Litha Hahn said last week. The money sought Monday would be used to acquire public beach access at Sunset Beach and to help set up a shelter for battered women and their children. Jim Gordon, mayor of Sunset Beach, requested \$150,000 in aid, telling commissioners the town is feeling the effect of public demand for beach access. "Everybody's got the same pro-

blem," he said, "But we're trying to do something about it. We believe that with some help from the county, the N.C. Department of Natural Resources and Community Development and Sunset Beach, we can create parking that will make Sunset Beach a better place for visitors." Land has been donated to the town for a regional access area and the town has also identified several smaller areas where it would like to develop neighborhood access areas. Holden Beach Commissioners recently said they planned to resubmit an earlier request to commissioners seeking similar aid for a public access project at that beach. County Commissioners also heard from three representatives of Home Harbor Home Inc., a non-profit organization working to establish a shelter for victims of domestic violence and their families. The group was created through the efforts of Camp United Methodist Church. Board member Michael Cox requested \$14,500 to set up the house, not to operate it. These expenses include relocation of a four-bedroom home donated by a church member

from Holden Beach to the Bolivia area, purchase of a lot to set it on, and installation of a well, septic tank and utilities. Katherine Shawver, chairman of the board, said civic groups and churches across the county have made commitments to help with operating costs and the group will work with the Region 0 Council of Governments in seeking grants from public and private agencies. Since it began keeping such records in July 1986, the Brunswick County Sheriff's Department has received an average of 160 domestic calls each month. Rev. Stan Smith, pastor of Camp United Methodist Church, said the nearest shelter is in New Hanover County. "We feel we need a shelter in our county to serve our people," he told commissioners. "We want to help these victims with the kind of dignity and compassion they deserve." The shelter would also provide counseling and information and referral to its residents, as well as a

public education/awareness program on the problem of domestic violence. In other business, the board: •Hired as county auditor for fiscal year 1987 the firm of Brock, Berry & Padgett, which has a Shallotte office, for an annual fee of \$32,480, a sum less than the audit contract last year. The previous auditor withdrew services after a fee dispute. •Requested more information before considering a request from the Brunswick County Board of Social Services to add to its group insurance coverage employees who work the equivalent of full-time. The measure is intended as an incentive for chore providers, said Social Services Board Chairman and Commissioner Frankie Rabon, who have lost their Medicare benefits but don't make enough money to afford individual insurance policies. However, Commissioner Chris Chappell was concerned how it would affect other part-time employees and the cost.

•On a motion by Commissioner Chris Chappell, asked Clegg to draft by their May 20 meeting a proposed local bill that would allow property owners to be assessed for paving as they are for water. The bill would apply to communities with private streets not eligible for acceptance by the state highway system. It would allow half the residents to put up the money for paving, then have the county assess all property owners once the work is done, with the backers recouping all but their own costs. The only cost to the county would be administrative, which could be passed on the landowners. •To go along with a matching \$16,000 grant from the state, allocated \$8,156 from contingency funds to the Brunswick County Airport Commission for a lighted windsock, bay station and security lighting needed in conjunction with offering its new fixed-base service. The sum will be considered in reviewing the commission's budget request for

the coming year. •Agreed to forward to the N.C. Department of Transportation requests from McKoy Road residents for road maintenance and improvements and from Lloyd Street residents in Butler Subdivision for addition of the street to the state system. •Directed Clegg to prepare a resolution for their approval, showing support of the Dare County Commissioners' efforts to have Oregon Inlet stabilized. •Named Commissioner Benny Ludlum their voting delegate to the National Association of Counties 1987 annual conference in July. •Amended the health department budget to reflect additional state funds in the family planning and child health programs and adopted a new sliding fee scale for the Woman, Infant and Child (WIC) nutrition program. •Delayed action on several change orders for work on the water system until they could review written copy.

## Parties Pick Nominees For Board Of Elections

Both local political parties are forwarding their lists of nominees for the Brunswick County Board of Elections to their respective party headquarters in Raleigh. Meeting last week, the Brunswick County Republican Party nominated two past candidates for elective office as its favorites for two seats on the board, according to Secretary Millie Murrow. They are Harold Willetts of Bolivia, a former sheriff who ran unsuccessfully in 1986 for the same office; and Glenda Walker of Leland, a former candidate for the Brunswick County Board of Education. The third choice is Larry Andrews, the

election board's current chairman. The Democratic Party Executive Committee met Friday, putting incumbent Orrie Gore of Southport at the top of its list of three nominees for a single seat on the board. Also named, in order of preference, were Pearly Vereen of Exum and Rusty Russ of Ocean Isle Beach. Chairman W.A. (Bill) Stanley Jr. said the names, presented as a package, were approved on a 42 1/2 to 2 vote. The chairman of each state party forwards the nominations to the State Board of Elections for appointment. The three appointees will serve two-year terms.

## More Workers Punch Clock

More Brunswick County employees are punching time clocks now under a directive issued by Acting County Manager David Clegg. The directive follows up on action taken by the county commissioners in 1984, which provided for all employees to keep a strict accounting of their time by the clock or by time sheets submitted at regular intervals. "I'm assuming they meant what they said," he added.

Clegg sent the memo to department heads about two weeks ago; it became effective immediately. Only department heads are not required to punch clocks, said Clegg. They are required to maintain time analysis sheets. He said time clocks are available to all employees, though those assigned to job sites other than the complex may be asked to use time sheets or some other accounting method by their supervisor.

## Jewelry Exhibit Opens Sunday

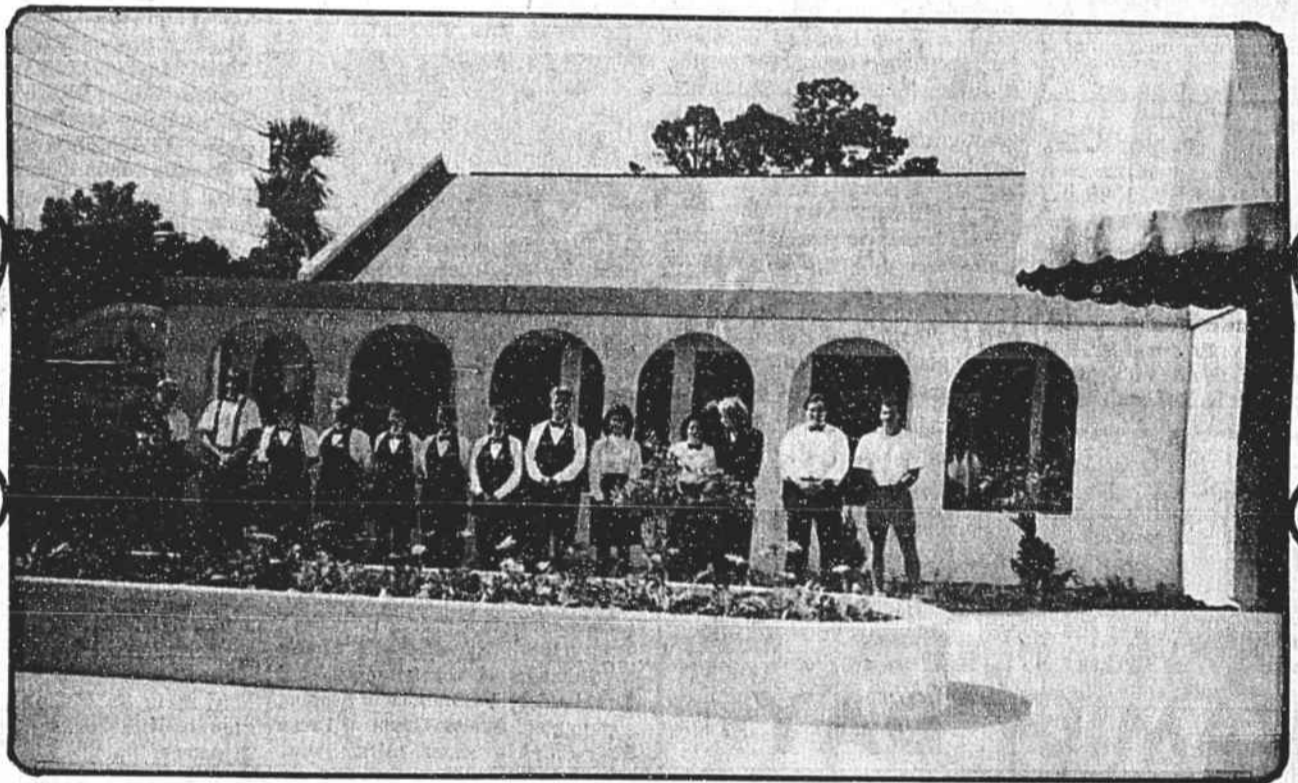
A new exhibit of handcrafted jewelry by Pam Rockwell opens Sunday at the Blue Dolphin Gallery on Beach Road in Southport with a reception for the artist. The 7 p.m. to 9 p.m. reception will feature an acoustic presentation by Melody Brown, vocalist, with Dave Emory and Randy Justice.

Rockwell will be available to meet guests during the reception and on Monday, May 25, from 10 a.m. to 2 p.m. The exhibition continues through July 5. Gallery hours are 8 a.m. to 5 p.m. weekdays and Sundays from 1 p.m. to 4 p.m. No admission is charged.

**The Chance to Discover**  
a unique dining experience is here...

## The Courtyard

Restaurant & Lounge  
At Ocean Isle



**Our staff cordially invites you to become acquainted with the leisure dining and enchanting atmosphere so unique to the South Brunswick Islands.**

- Dine Alfresco in one of our four tropical courtyards
- All lounge privileges including specialty cocktails and a dance floor
- Non-Menu Item Specials each day
- Lounge Hours: 4-12, 7 days
- Restaurant Hours: 5-10, 7 days
- We have two large separate dining areas, enabling us to cater to your organizations' business meetings.
- Homemade Breads & Desserts

**Portuguese Cuisine**      **Seafood**  
**Veal**      **Chicken**      **Beef**

**(919)579-8232 • OCEAN ISLE CAUSEWAY NEAR THE BRIDGE**  
**RESERVATIONS ACCEPTED**

**ON SALE NOW**

**RATTAN & WICKER FURNITURE**

Ask About Our Bedding Specials!  
"Quality Furniture at Discount Prices"

**Shallotte Furniture**

Hwy. 17 N., across from Twilight Motel, 754-6642