

# Two New Courses Challenge Area Golfers

BY DOUG RUTTER

Two new golf courses have recently opened in the South Brunswick Islands area, raising the total to eight in the rapidly growing golf haven.

The Pearl Golf Links and Brick Landing Plantation, although very different in design and flavor, both offer tests of skills for golfers of all abilities.

The Pearl, located off N.C. 179 near Calabash, opened the first of its two planned courses Sept. 23. A portion of the second course was scheduled to open Oct. 7, with the remainder opening in mid-November.

The course was designed by North Carolina golf architect Dan Maples, who also designed Sea Trail Golf Links, Oyster Bay Golf Links and Marsh Harbour Golf Links locally.

The "links" name at The Pearl holds true as golfers face a relatively wide open course, distinguishable by rolling fairways and looming water hazards.

The Calabash River and its marshes come into play on four holes along the back nine, while lakes await the unsuspecting golfer on eight additional holes.

Although the course plays to a par of 72, the shorter front nine includes three par 3's and plays to a par of 35. The longer back nine, which includes the two toughest-rated holes on the course, plays to par 37.

Five teeing areas offer a challenge to each golfer playing The Pearl, regardless of ability.

Women face a layout measuring 5,076 yards, while the men's yardage is 6,221. Those seeking a stiffer test, may choose from two championship tees measuring 6,613 and 7,011.

Pivotal holes on the front side include the par-3 fourth. Although only 135 yards from the men's tee and 103 from the women's, the sloping green is guarded by a huge bunker on its right front side and a small lake behind.

The par-4 fifth hole, 386 yards for men and 350 for women, offers another stiff challenge as golfers are required to drive down a narrow fairway and thread a lengthy approach shot between two well-positioned trees.

Another key hole on the outward

half is the par-5 seventh. Rated as the third toughest hole on the course, it measures 530 yards for men and 437 from the ladies' tee.

The approach shot to this hole is partially blind, as the fairway rapidly slopes downward starting at the 150-yard marker. A small lake also guards the back of this hole, causing added trouble for golfers not aware of the downslope.

The back nine is highlighted by the dangerously beautiful par-5 11th hole. Rated as the course's toughest hole, the right side of the fairway is bordered from tee to green by the Calabash River.

Men must negotiate 535 yards of fairway which slopes drastically towards the river, while women play 436 yards of identical treachery.

Although the par-5 13th measures only 485 yards for men and 417 for women, the double dogleg and lake bordering its right side make it a true shotmaker's hole.

In spite of the lake, the drive must favor the right side of the fairway if the golfer is to be in any position for the second shot. A lay-up second shot will set up a short approach to an elevated and well-bunkered green.

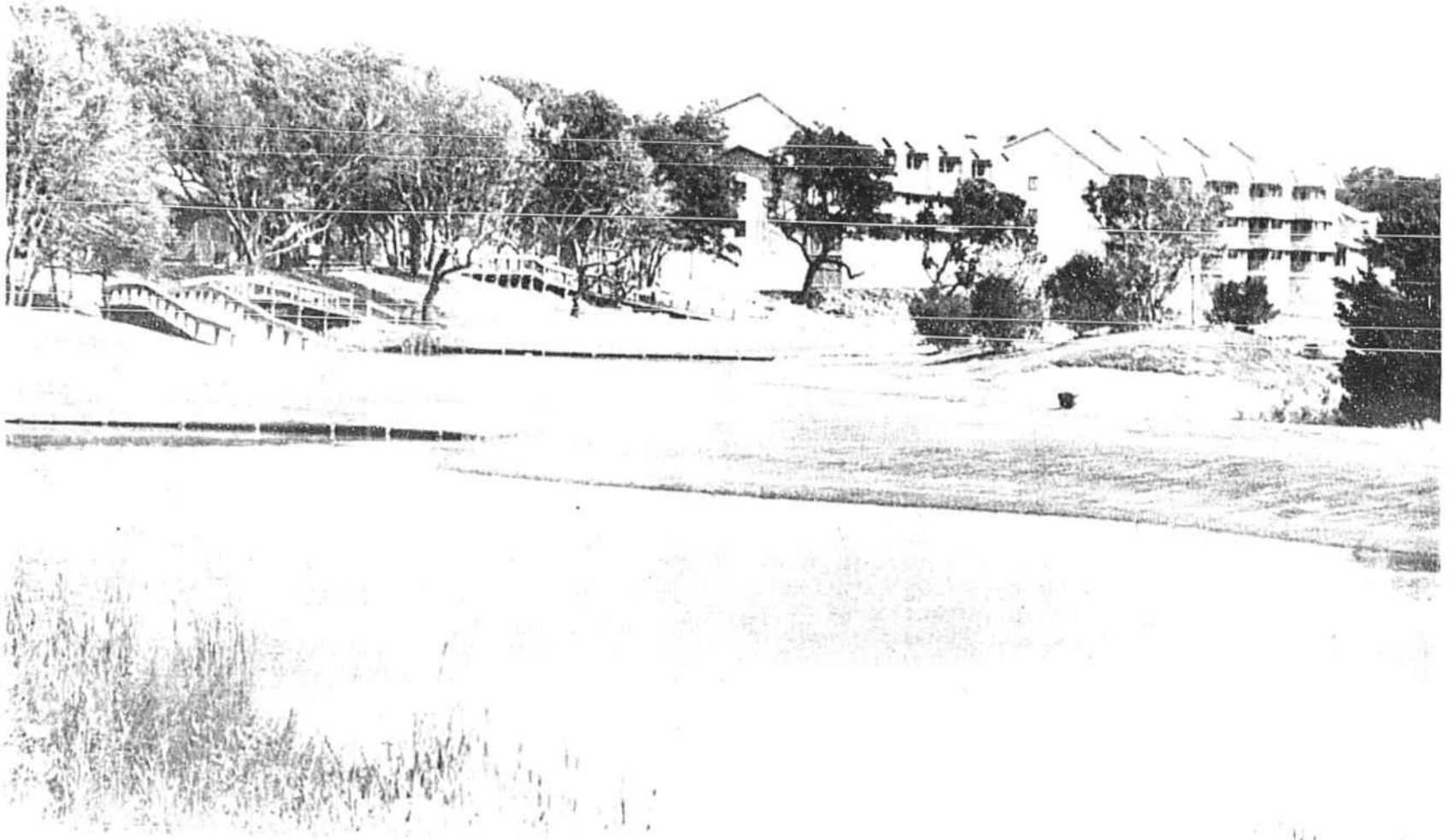
The par-5 18th gives The Pearl a memorable finishing hole. Measuring 528 yards from the men's and 418 from the women's tee, the uphill home hole includes two separate water hazards and a view of the spacious club house.

In general, putting at The Pearl should not be done too aggressively as golfers will often find the holes located near severe slopes. Putts will roll true and will sometimes break more than expected, so the best advice is to putt tentatively until familiar with the greens.

Scoring at the Pearl's west layout must be done on the course's five par 3's, as its five par-5 holes are rated as the five toughest holes on the course and should yield few birdies or pars.

Brick Landing Plantation, located on N.C. 179 between Ocean Isle Beach and Shallotte, measures slightly shorter than The Pearl but makes up for the lost yards with extremely narrow fairways and 16 holes where water is a factor.

Brick Landing Plantation



BRICK LANDING PLANTATION'S 18TH HOLE requires a drive and a second shot over two separate water hazards. STAFF PHOTO BY DOUG RUTTER

measures 6,152 for men and 4,835 for women and plays to a traditional par of 72. Championship tees set up a course of 6,462 yards.

Golfers are treated to three short holes from the start before facing the narrow and hazardous par-5 fourth. The dogleg left, measuring 495 yards for men and 428 for women, requires a drive between two large lakes which must be followed by two approach shots over separate water hazards.

The toughest-rated hole on the course is the par-5 seventh which plays 536 yards for men and 449 for ladies. The long, dogleg right is complicated by a single tree located in the center of the fairway which comes into play on the second shot.

The back nine's first stiff challenge comes at the par-4 11th, which also

features a centrally-located tree. Although only 339 yards for men and 265 for women, a drive over intimidating marshes and a small landing area makes the hole where trouble is easy to find.

The par-5 13th, rated as the second toughest hole at Brick Landing Plantation, requires a strong drive over a lake and an uphill second shot from what can often be a difficult stance.

The hole measures 498 yards from the men's tee, while women are given a well-deserved break with a length of 379 yards.

The par-3 17th hole, although rated as the easiest hole on the course, provides a mental challenge more than a challenge of strength.

The hole measures only 116 yards from the men's tee, 87 yards for ladies, but requires a delicate touch

as the green slopes towards the back. A ball hit slightly too far is likely to drop over a 15-foot cliff to the shore of the Atlantic Intracoastal Waterway. Birdies are possible, but par is a good score.

Brick Landing Plantation offers a spectacular finishing hole along the waterway. The short par-4 requires a drive over a lake to a narrow landing area and a second shot over another lake to a large, undulating green.

The course is designed by Mike Brazeal, who helped with a course in Wilmington before undertaking his first golf architectural project at Brick Landing.

Construction of Brick Landing's second 18 holes will be started next year, and the course should be opened before 1990.

As with The Pearl, a tentative ap-

proach to putting may be the best advice for the first-time golfer at Brick Landing. The greens can be very slick in spots and do not warrant aggressiveness on 20-footers.

Brick Landing Plantation also offers many surprises and hidden trouble spots which will require a few rounds to recognize.

Because of Brick Landing's relative short length, it is imperative to stay in the fairway. The course's bermuda rough is wiry and requires far more strength to escape than the average golfer has to muster.

Generally, both courses are well designed and offer a variety of challenges within the scope of their individual characters. They continue the growing tradition of championship golf courses in the South Brunswick Islands.

## Brierwood Women Surprised

The Brierwood women golfers were met by surprises when they gathered on Sept. 29.

As they enjoyed refreshments, a surprise Webster-Crook Tournament was announced in addition to the regular weekly tourney of low gross and low net in three flights.

At the conclusion of play, Webster-Crook prizes were awarded to Gladys Bowen, low gross, 89; Pat O'Connell, first low net, 90-29-61; Nel Justice, second low net, 90-26-64; Dot Crean, closest to the pin on No. 3; and Gladys Bowen, closest to the pin on No. 14.

A surprise lunch at the Brierwood Clubhouse followed regular play.

Winners in the weekly tournament were as follows: First flight—Gladys Bowen, low gross, 89; Nel Justice, first low net, 64; and Ann Casner, second low net, 91-22-69; second flight—Pat O'Connell, low gross, 90; Toni Iossi, first low net, 94-28-66; and Anne Gentles, second low net, 94-27-67; and third flight—Esther Smith, low gross, 99; Virginia Gibson, first low net, 102-34-68; and

Thelma Speidel, second low net, 106-34-72.

Chip-ins were recorded by Pat O'Connell on No. 15, Gladys Bowen and Marian Johnson on No. 7, Toni Iossi on No. 5 and Bobby Cordisco on No. 9.

Birdies were made by Toni Iossi on No. 5, and Gladys Bowen and Marian Johnson on No. 7.

Low putt honors were shared by Toni Iossi, Pat O'Connell and Nel Justice, all at 29.

J.B. Webster and Ladies Day Chairman Glenda Crook were responsible for the surprises of the day.

Marie Dolan announced the fall luncheon will be held Oct. 24 following the scramble.

## GALES CHEVRON

Hwy. 130, Holden Beach Rd. (1 mi. from Hwy. 17) 754-8207

**Chevron**



**Chevron Gas**

Major and Minor Repairs  
Tune-ups • Lubrications  
Tire repairs for cars and trucks

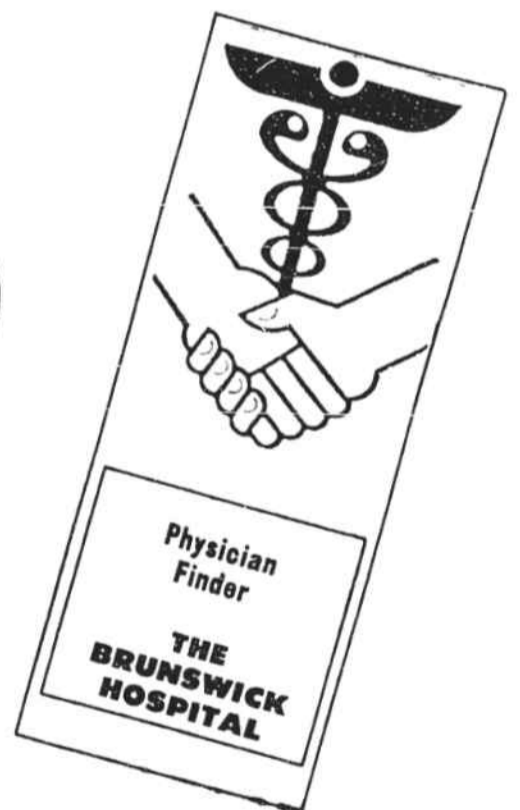
Apply Now For Your Chevron Credit Card

David Gales—Owner/Operator  
(former owner of Amoco Service Station  
Main Street, Shallotte)

We Honor  
Most Major  
Credit Cards

## We'll Make Finding A Physician As Painless As Possible!

Dad, I like everything in our new town, especially Dr. Brunswick!



Finding a physician for your needs is one of the most important health care decisions you'll make. Take the pain out of that decision with our FREE "Physician Finder" service.

Because The Brunswick Hospital features the most modern medical technology and gives top priority to the needs of their patients, it attracts many outstanding physicians. We'd like to help you find the doctor who's right for you.

Call today for the name, address and phone number of an outstanding physician in your area of need!

**THE BRUNSWICK HOSPITAL**

**Physician Finder  
754-5055**

## Butler's Golf & Tennis Shop



Name Brand Golf Balls at LOWEST PRICES on the STRAND

See our full set of compensating clubs by Chicago Cutlery \$400

BRUNSWICK SQUARE VILLAGE • 754-5335  
HWY. 17, SHALLLOTTE • 2 BLOCKS SOUTH OF LIBRARY  
AL & BETTY BUTLER, OWNERS

★ MANY CLOTHING ITEMS REDUCED 30% OFF RETAIL ★

Golf Equipment by Taylor Made • Wilson • Souder • Bridgestone

Ladies' & Men's Clothing

Golf Shoes By Pro Stag

Tennis & Golf Shoes By FootJoy & Wilson

MAKE FRIENDS WITH



© 1987 THE BRUNSWICK BEACON

© 1987 THE BRUNSWICK BEACON