

# Fishing Rules Changed To Meet Federal Plans

BY DOUG RUTTER

North Carolina anglers who enjoy fishing for mackerel, bluefish, marlin or sailfish have several new regulations to follow starting this week.

As required by federal law, the N.C. Division of Marine Fisheries adopted the rules in order to comply with Atlantic States Marine Fisheries Commission management plans.

Among the policies that took effect Tuesday are minimum size limits for king and Spanish mackerel, a stricter size limit for bluefish and daily harvest limits for marlin and sailfish.

State officials have set the minimum size limit for king mackerel at 20 inches fork length, while the limit for Spanish was set at 12 inches.

Daily harvest limits for both types of mackerel remain the same, with the king mackerel limit at five fish per day and the daily limit on Spanish at 10.

Any fisherman with a National Marine Fisheries Service (NMFS) permit to fish on the commercial king mackerel quota is exempt from the bag limits.

Also, charter boats with NMFS Federal Coastal Migratory Pelagic Charter Boat Permits must comply with the mackerel bag limits only when three or more persons are on board.

In other rule changes, the minimum size limit for bluefish caught on the hook-and-line has been increased

from 10 inches to 12 inches.

The state also has imposed a 20-fish daily creel limit for blues and eliminated the five-fish limit for bluefish larger than 24 inches.

North Carolina also has established daily limits of one for blue marlin, white marlin and sailfish. Minimum size limits remain 86 inches for blue marlin, 62 inches for white marlin and 57 inches for sailfish.

Rich Carpenter, southern district manager for the Division of Marine Fisheries, said the rule changes were prompted by a law that gives the federal government more jurisdiction over fish that migrate across state lines.

The legislation approved last fall requires states to comply with the Atlantic States Marine Fisheries Commission (ASMFC) management plans for migratory species. In the past, Carpenter said states were not required to comply with ASMFC plans.

"It added some weight to their authority," he said. "A lot of the species that the ASMFC has control over, they are caught in this part of the state, but it really affects the fishermen around Hatteras and north more than us."

The ASMFC is a panel comprised of three representatives from each coastal state from Maine to Florida. Bill Hogarth, director of the N.C. Division of Marine Fisheries, is chairman of the commission.

## This Week's Tide Table

**FEBRUARY**

Day	Date	A.M.	P.M.	A.M.	P.M.
Thursday	17	12:11	6:12	6:29	
Friday	18	12:42	1:01	7:05	7:22
Saturday	19	1:38	2:00	8:05	8:21
Sunday	20	2:38	3:02	9:08	9:22
Monday	21	3:38	4:04	10:08	10:21
Tuesday	22	4:36	5:01	11:03	11:17
Wednesday	23	5:30	5:55	11:54	

**ADJUSTMENTS**

SHALLOTTE INLET—add 17 min. high tide, add 32 min. low tide.

LOCKWOOD FOLLY—subtract 22 min. high tide, subtract 8 min. low tide.

BALD HEAD ISLAND—subtract 10 min. high tide, subtract 7 min. low tide.

SOUTHPORT—add 7 min. high tide, add 15 min. low tide.

LITTLE RIVER—subtract 11 min. high tide, add 18 min. low tide.

## Two Teams Still Undefeated In Church Basketball League

Calvary Baptist and Shallotte First Baptist posted easy wins last week to remain undefeated in the Brunswick County Men's Church Basketball League.

Both teams had one game scheduled this week before their head-to-head showdown next Monday night. Calvary entered this week with a record of 9-0, and Shallotte First was close behind at 8-0.

Shallotte First defeated New Britton 74-43 last Friday. Danny Sheron, Ray Suggs and Gordon Winfree scored 12 points apiece to lead Shallotte First. Eddie Stevens had 17 for New Britton.

In league action last Tuesday, Chris Hoover scored 18 points as Calvary cruised to a 74-49 win over Supply Baptist. Jeff Clemmons scored 15 points in a losing cause for Supply.

In other games Friday night at Waccamaw Elementary School, Letties Grove improved to 7-2 with a 54-48 win over Mount Olive. Brad Thomas scored 23 points for Letties Grove, and Eric Mintz had 18 for Mount Olive.

Micky Garrell scored 18 points to lead Jennies Branch to a 53-41 win over Friendship Baptist. John Mc-

Laurin led Friendship with 17 points.

Seaside Methodist got nine points from Rick Doby in a 43-36 win over Shallotte Presbyterian. Neil Warren had 13 for Shallotte.

In league play last Tuesday, Delane Chappell scored 13 points as Zion Baptist roiled to a 53-31 win over Dixon Chapel. Adam Nixon was the high scorer for Dixon Chapel with 19.

Camp Methodist edged Ocean View 39-31. Pauley Barefoot had 12 points for Camp, and Steve Randone led Ocean View with 19.

**Brunswick County Church Basketball League Standings As Of Feb. 13**

Team	Wins	Losses
Calvary Baptist	9	0
Shallotte First	8	0
Letties Grove	7	2
Jennies Branch	6	2
Camp Methodist	6	2
New Britton	5	3
Zion Baptist	5	4
Seaside Methodist	5	4
Mount Olive	2	6
Friendship Baptist	2	6
Supply Baptist	2	7
Shal. Presbyterian	1	7
Ocean View	1	7
Dixon Chapel	0	9

## OVER 30 LEAGUE

## Mule Riders Take First

The Mule Riders took over sole possession of first place in the Brunswick County Over 30 Men's Basketball League with a pair of wins last week.

Buddy Milliken scored 16 points to lead the Mule Riders to an 80-45 win over Doshier Hospital last Thursday at Supply Elementary School. Larry Johnson led the hospital with 13 points.

The Riders also posted a 70-66 win over the Top Guns last Monday. Milliken scored 24 points in that game, and Timothy Ward poured in 32 points for the Guns.

## Waccamaw Dixie Youth Baseball Sign-ups Saturday

The Waccamaw Athletic Association will hold registration for the Dixie Youth Baseball League this Saturday.

Boys and girls can sign up at the Waccamaw Community Building from noon until 4 p.m.

Each child must be accompanied by a parent or guardian. Children must bring a copy of their birth certificate, their Social Security number and the registration fee of \$15.

In other league action last week, Galloways Gang got 20 points from Harold Shaw in a 111-42 whipping of Doshier Hospital. Eugene Des-Lauriers had 16 points for Doshier.

Last Thursday, the Wannabes posted a 73-57 win over the Has Beens. Mitch Healy led the winners with 23 points, and Hal Bridgers had 21 for the Has Beens.

**Brunswick County Over 30 Men's League Standings As Of Feb. 14**

Team	Wins	Losses
Mule Riders	3	0
Wannabes	2	0
Top Guns	1	1
Galloways Gang	1	1
Has Beens	0	2
Doshier Hospital	0	3

**ROTO TILLERS**

Factory-Direct Savings

• FREE Demonstrations of America's #1 garden tiller!

• The famous rear-tine tiller with JUST ONE HAND performance!

• Factory Authorized Sales & Service!

• See it-try it-take it home!

**TROY-BILT**

**MILLIGAN**

Power & Lawn Equipment  
501 Whiteville Rd., Shallotte, 754-8335

## Fishermen's Tax Guide Available

The Internal Revenue Service has a new publication to assist people in the commercial fishing industry prepare their income tax returns.

IRS publication 595, Tax Guide for Commercial Fishermen, covers topics such as record keeping, business expenses, depreciation and treatment of wages paid to crew members.

To order, call 1-800-829-3676.

## Bonnie Decker Rolls 224 In Woodmen Mixed League

Bonnie Decker rolled a 224 high game and 532 series to lead the women in the Woodmen of the World Mixed League last Friday night at Brunswick County Bowling Center.

Other top finishers included Doreen Alloway, 213, 519; Becky Rountree, 195, 510; Candy Fields, 193, 482; Beverly Williams, 180, 458; Cathy Sibbett, 179, 453; Audrey Redwine, 175, 432; Gloria Bland, 174, 507; Regina Lyles, 173, 418; Lois Ramsey, 170, 451.

Leading the men's division was Scott Decker with a high game of 241 and a 594 series. Mike Bellamy had a 217 game and the high series of 601.

Also posting high scores were Jeff Sibbett, 217, 580; Jimmy Robinson, 214, 516; Steve Reynolds, 208, 534; Eric Varnum, 200, 565; and Roland Decker, 200, 519.

Come see...

**SHALLOTTE MARINE SUPPLIES**

at the

**Myrtle Beach Boat Show**

February 25, 26 and 27

**EVINRUDE OUTBOARDS**

Main Street, Shallotte • 754-6962

# SCHAEFFER'S PRE-OWNED AUTOS

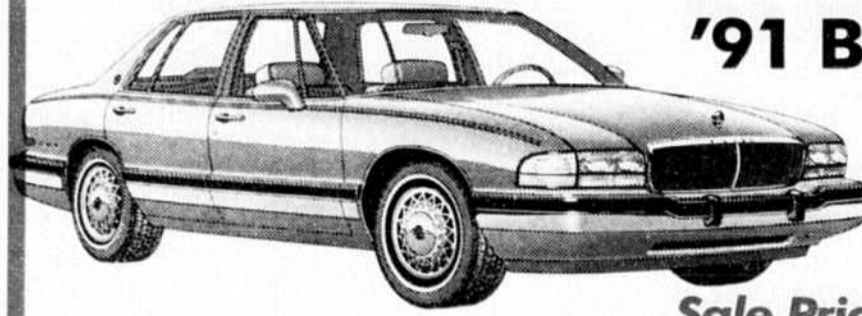


Make Your Automobile Purchase Special!  
The Schaeffer Difference  
Thank You!

Free Ticket To Rockingham Race, Feb. 26 with Any Purchase of Vehicle, Parts Or Service  
Limited supply, while tickets last

## QUALITY PRE-OWNED BUICKS!

'88 BUICK LeSABRE, 4-dr., 3.8 V-6, tilt, cruise, all power, low miles. Dynaride suspension. Was \$9,995 ----- Now \$7,929



'91 BUICK PARK AVENUE  
4-dr., air bag, Abs brakes, just like new! Low miles, power seats, P783.  
Was \$17,995  
Sale Price \$15,983

- '91 BUICK LeSABRE LIMITED, 4-dr., V-6, tilt, cruise, loaded, low miles! P787 ----- \$12,908
- '92 BUICK ROADMASTER, 4-dr., V-8, air bag, Abs brakes, rear wheel drive. Luxury at its best! Was \$17,995 ----- Now \$15,988
- '93 BUICK ROADMASTER, 9,000 miles, V-8, air bag, fully loaded, just like new! ----- SALE PRICED!
- '92 BUICK LeSABRE, 4-dr., V-6, tilt, cruise, power seat, air bag, warranty. P799. Was \$15,995 ----- Now \$13,964
- '89 BUICK ELECTRA STATION WAGON, V-8, rear wheel drive, local trade, power windows, tilt, cruise, power locks ----- CLEAN CAR!
- '91 BUICK REGAL, 4-dr., V-6, tilt, cruise, power windows and locks, low miles, local trade ----- JUST TRADED!
- '90 BUICK CENTURY, 4-dr., V-6, tilt, cruise, local trade, low miles, very clean ----- VALUE BUY!

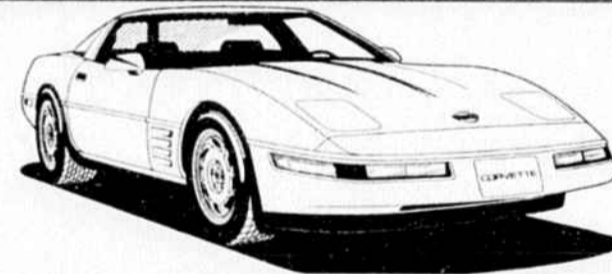
## SCHAEFFER'S LUXURY LINE-UP!



'92 LINCOLN TOWN CAR  
Local trade, leather, tilt, cruise, V-8, rear wheel drive, air bag, Abs brakes  
SALE CAR!

- '92 LINCOLN TOWN CAR, local trade, leather, tilt, cruise, V-8, rear wheel drive, air bag, Abs brakes ----- SALE CAR!
- '92 CADILLAC DEVILLE, 4-dr., V-6, leather, air bag, Abs brakes, loaded warranty ----- 18,000 MILES!
- '93 BUICK PARK AVENUE, 4-dr., V-6, air bag, Abs brakes, power seats, tilt, cruise, warranty ----- SAVE!
- '91 BMW 325i, 4-dr., leather, automatic, 24,000 miles, moon roof, very nice! ----- THE ULTIMATE!

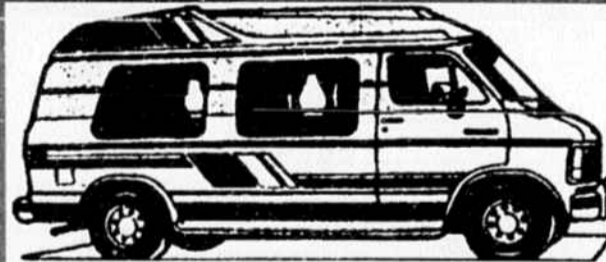
## SPORTY!



'92 CHEVROLET CORVETTE  
V-8 350, automatic, leather, adjustable ride control  
15,000 MILES!

- '93 CHEVY CAMARO Z28, 350 V-8, loaded, 11,000 miles, all the equipment ----- MUST SEE!
- '92 HONDA ACCORD EX, 2-dr., 5 speed, moon roof, power windows and locks, green in color ----- ONE OWNER, LOCAL TRADE!

## VANS AND RECREATIONAL



'93 GMC CONVERSION VAN  
Explorer package, VCR, TV, dual A/C, raised roof, CD play, top of the line conversion!  
LIKE NEW!

- '91 CHEVY BLAZER, 4-dr., 4.3 V-6, tilt, cruise, Tahoe package, just like new ----- LOCAL TRADE
- '89 JEEP WAGONEER LIMITED, 4x4, leather, keyless entry, tow package, one-owner, local trade ----- JUST TRADED!
- '93 CHEVY PICKUP, 350 V-8, tilt, cruise, all power, warranty. 17,000 miles ----- 4x4!

## SPECIAL WEEKEND PROGRAM CAR PRICES!

- '93 BUICK SKYLARK, 4-dr., V-6, tilt, cruise, Abs brakes, like new! 18,000 miles, warranty. GP802 ----- \$10,962
- '93 BUICK CENTURY STATION WAGON, V-6, tilt, cruise, all power, tilt, cruise. Was \$15,995. Warranty. GP805 ----- Now \$12,964
- '93 BUICK REGAL, 4-dr., V-6, tilt, cruise, all power, Dynaride suspension, loaded. GP806 ----- Sale Price \$12,938

'93 BUICK CENTURY  
4-dr., V-6, tilt, cruise, Dynaride suspension  
Power recliner. GP851

\$10,824



# SCHAEFFER BUICK-BMW

4920 NEW CENTRE DR. • WILMINGTON  
1-800-473-2995 or 392-2700