

HELPING YOU IS WHAT WE DO BEST



Blue Cross Blue Shield
of North Carolina
is the health insurance for
people with medicare.

Pick up your **FREE** brochure
at Farm Bureau Insurance

HOMEOWNERS • AUTO • FIRE • LIFE

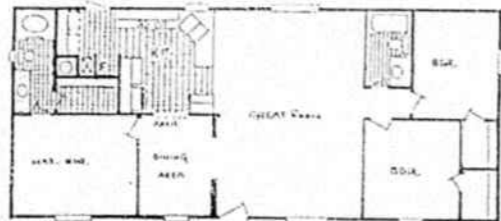
SHALLOTTE
754-8175

LELAND
371-2111

SOUTHPORT
457-9559

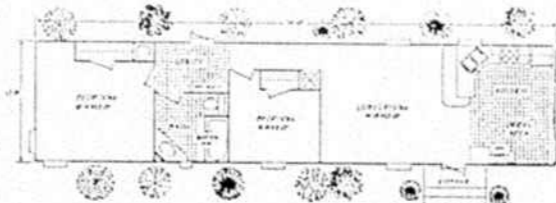
©1994 THE BRUNSWICK BEACON

All American Home Sales
US Hwy. 74 & NC
701 Bypass
Whiteville, NC
"Selling For Less"
910-640-2699



24x56 home with 3 BR, 2 baths, garden tub, formal dining room, great room with vaulted ceilings & more.

Eagle Trace #4
Sale Price
\$24,900



14x60 home with 2 BR, 1 bath, front kitchen with bay window.

Weston #11
Sale Price
\$14,900

©1994 THE BRUNSWICK BEACON

It's never too late to learn at BCC



Add a Little "Class" to Your Life

Call the Continuing Education Department at Brunswick Community College for information on how to register for the following courses coming this spring.

- Introduction to Computer Applications
- Word Processing • Stress Management • Beginning Painting & Art • Taxidermy • Conversational Spanish • Cake Decorating • Crocheting • Quilting • Pottery • Sewing • Netmaking & Mending • Bricklaying • Brunswick County History • Batik & Cloth Dying • Guitar

Courses are offered in Southport, Leland, Calabash, and Shallotte areas. Participants age 65 and older are exempt from registration fees except for self-supporting classes. Watch for our complete spring schedule in your mail.

Join Our Resource Team!

Do not retire your skills and knowledge. Share your experience and expertise by teaching a course through Continuing Education. We are seeking qualified instructors in many areas such as Personal Computers, Basic Skills, Foreign Languages, International Cooking, Horticulture, Arts & Crafts, Restaurant Management & Quantity Cooking, Parenting & Life Skills, Management & Supervision, plus others.

Continuing Education
Extension 380
(910) 754-6900
457-6329
343-0203

Caring

Why And How To Arrange A Funeral In Advance

Greg White



It happens all to often...

A death occurs, and without warning, a family member or friend is left to make all the difficult decisions of arranging a funeral with little idea of what is involved, what the costs are, or most important, what final arrangements the deceased would have wanted.

When a loved one dies, the anxieties and stress of making funeral plans can be an overwhelming emotional responsibility. In addition, the costs involved can leave a real financial burden on your surviving family members when they are least prepared to deal with the additional worry about money. And that is why more and more people are thoughtfully pre-planning funeral arrangements in advance.

You can protect your family members or friends from becoming one of the many people unprepared to face the burden of making difficult funeral decisions.

Consider The Advantages:

•Transferability

Whether you decide to move across town or across the country, all your prearranged program benefits are transferable to any participating funeral home. This is especially comforting and convenient to those who have relocated to Brunswick County but would prefer to have their funeral back home.

•Affordable prearrangements

Our program is designed to make funeral preplanning more affordable. Our policy allows you to set aside funds for your funeral in one lump sum or stretch the funding plan for up to five years, depending upon your age.

•Inflation protection

By purchasing your funeral in advance, you can lock in the cost of your funeral based on today's prices. With funeral costs rising an average of 5% per year, it's a real benefit for your loved ones and sound financial planning.

•A Living Decision

Like a living will, your prearranged funeral assures your wishes are met. Once you've decided, your loved ones will have a permanent record of your preferences for tomorrow.

•Peace of Mind

You'll be secure in knowing that you have spared your loved ones stress, worry, anxiety...and money by prearranging your funeral—in writing.

•Tax benefits

Current tax laws have made the preplanning program even more attractive. Unlike trust funded prearrangement plans, the increase in value of the specially designed insurance policy used in the program eliminates certain taxes for your survivors.

Advance funeral planning is a decision only you can make. Coble Ward-Smith has a prearranged funeral program that allows you to plan ahead by making wise, personal choices—in writing—and know that your wishes will be carried out.



Coble Ward-Smith Funeral Service

"A proud tradition of dignified service to every family's needs."

Greg White—Manager • Hwy. 17 N., Supply • 754-6848

©1993 THE BRUNSWICK BEACON