

Real Estate and Classified Advertising

PHONE 754-6890 TO PLACE A CLASSIFIED AD
 RATES—\$3.50 for the first 20 words per week;
 5 cents for each additional word.
 DEADLINE—Classified advertising is accepted until noon
 Tuesday for publication in Thursday's issue.

THE BRUNSWICK BEACON

THURSDAY, JUNE 30, 1994

C

INSIDE THIS SECTION:
 • The South Brunswick Islands' most complete real estate listings

REAL ESTATE

LOCKWOOD GOLF LINKS CONDO. 2 BR, 2 bath, fully furnished, excellent condition, with lock-out. 100 yards to pool, golf, tennis, sauna, food, exercise room, clubhouse and boating. Holden Beach just 6 minutes drive away. Screened porch overlooks 18th green with water view. Open house July 2nd and 4th, 9-12 noon. 103 Genoe Point. \$129,000 including \$5,000 golf membership. (910)842-2616.

GOLF COURSE LAND or for housing development, 230 acres. Corp of Engineers approved. No wet lands. Ready to develop. Contact (704)328-1510 nights or (704)328-1437 days.

Real Estate

HOUSE FOR SALE "doublewide" by owner. 3 bedroom, 2 baths, newly carpeted, blinds, all appliances, built in China closet, screened porch, oversized garage on lot and a 1/2 in quiet, Calabash area. Asking \$59,900 negotiable. Call (910)579-3648 or (910)579-8325.

BRICKLANDING PLANTATION. Mariners Wacche. 2-BR, 2-bath condominium. Directly on 1st hole, overlooks intracoastal Waterway plus ocean view, bright end unit #4201. Completely furnished, open deck, screened porch, parking underneath for two cars, plus swimming pool. Ocean minutes away. \$105,900. Call (910)579-1873.

Real Estate

BRIERWOOD: BRIGHT, CHEERFUL 2-yr old rancher, 3 bedrooms, 2 baths, 2-car garage. Gas heat and fireplace. All appliances, includes built-in microwave, and window treatments remain. Private deck overlooks woods. 754-5802.

FOR SALE 19.67 acres, \$25,000. Broker. 842-6949 or 754-2576, Linda.

TWIN LAKES, SUNSET BEACH. On the fairway. Spacious 4-BR, 3-bath home. Large beautiful kitchen, den, library, 2 car garage. \$194,900. 579-0300. NATIONSREALTY, Island Coast Associates.

Real Estate

LAKE MURRAY, SC waterfront bargain! 1.2 acres/158 ft. frontage \$27,900. Beautifully wooded homesite on one of America's finest fishing lakes! Enjoy great fishing, mild climate, low taxes. Easy-to-own terms! Call 1-800-554-9564 Carolina Country Properties.

3-BR, 2 1/2 BATH HOUSE, 2-car garage, breezeway, back porch, C/H/A, studio/rec room, 24X40 2-story workshop, 30X90 greenhouse. Located on one acre, one mile east of Ocean Isle Beach on Hwy. 179. By appointment. Call (910)754-4251 or Roy's Nursery 754-2933.

Real Estate

CANAL LOT - HOLDEN BEACH, by owner, deep water canal, w/4-BR septic tank permit and bulkhead. 125 Charlotte St. \$49,900, 1-800-484-9523, ext. 1057.

Real Estate

SEA TRAIL PLANTATION. Lot #73 Heather Drive. By owner. On 6th fairway of Maples Golf Course. \$59,900. Call (803)458-7544.

RAMPAGE REALTY

(910)842-4663

Evelyn Bullock REALTOR
 Floyd Bullock REALTOR
 Michael McDonald REALTOR



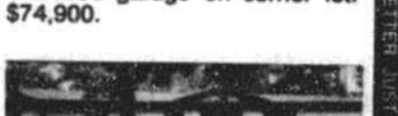
NEW LISTING—MAPLE CREEK! Immaculate, cozy and comfortable home, furnished and ready to move in, on large lot close to Holden Beach. Has water access. \$27,000.



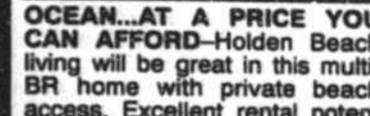
FOLLY RIDGE—NEW CONSTRUCTION—3 BR, 2 baths with enclosed garage on corner lot. \$74,900.



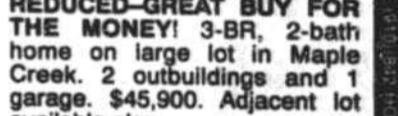
OCEAN...AT A PRICE YOU CAN AFFORD—Holden Beach living will be great in this multi-BR home with private beach access. Excellent rental potential. Full front porch and open and covered rear deck. Call Floyd. \$99,500.



REDUCED—GREAT BUY FOR THE MONEY! 3-BR, 2-bath home on large lot in Maple Creek. 2 outbuildings and 1 garage. \$45,900. Adjacent lot available also.



ACTIONS SPEAK LOUDER THAN WORDS! REDUCED TO \$27,000. 3-BR, 1 1/2-bath home is only 1,000 ft.± from the ICW. Pier privileges available. Call Michael.



WRAP-A-ROUND DECK—Pampas grass with good lawn. 3-BR, 2-bath home is on a paved street in Holden area. Owner financing available.



APPROXIMATELY 2 ACRES studded with hard woods, on Bricklanding Road. The unbelievable beauty of this property has to be seen to be appreciated. Will need survey to determine boundary and size. Priced at \$15,000 per acre.



LARGE MARSH VIEW LOT near Goose Creek and Brick Landing Plantation. A 1.8 acre elevated, tree studded lot on Sauce Pan Creek marsh. In a quiet and peaceful neighborhood. \$69,900.



ERA® - CALLIHAN, TEAL, SKELLEY & ASSOC., INC.
 10239 Beach Road SW (Hwy. 179)
 Calabash, NC 28467
 1-800-833-6330 • Local 910-579-4097



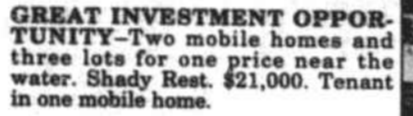
Ask For MR. "G" CARL GRAVES
 Associate Broker
 NEW LISTINGS



GREAT INVESTMENT OPPORTUNITY—Two mobile homes and three lots for one price near the water. Shady Rest. \$21,000. Tenant in one mobile home.



VERY NICE—Manufactured home, 1600 sq. ft. Located 1.5 miles from Wal-Mart for easy shopping. Large storage shed. Lots of trees in a circular driveway. Located on a cul-de-sac, for peaceful quiet living.



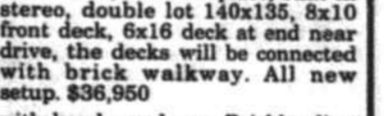
FABULOUS—Singlewide 14x70 mint condition. Holly Acres. Looks brand new, wood fireplace, built-in stereo, double lot 140x135, 8x10 front deck, 6x16 deck at end near drive, the decks will be connected with brick walkway. All new setup. \$36,950



APPROXIMATELY 2 ACRES studded with hard woods, on Bricklanding Road. The unbelievable beauty of this property has to be seen to be appreciated. Will need survey to determine boundary and size. Priced at \$15,000 per acre.



LARGE MARSH VIEW LOT near Goose Creek and Brick Landing Plantation. A 1.8 acre elevated, tree studded lot on Sauce Pan Creek marsh. In a quiet and peaceful neighborhood. \$69,900.



LARGE MARSH VIEW LOT near Goose Creek and Brick Landing Plantation. A 1.8 acre elevated, tree studded lot on Sauce Pan Creek marsh. In a quiet and peaceful neighborhood. \$69,900.

ALL AMERICAN BARGAINS!



455 East 3rd St. Listen to the surf and watch the waves from this 4-BR, 2-bath home with a large open floor plan. An excellent view from the oversized front deck with only a short stroll to the beach. An unusual opportunity at \$107,000

East 2nd St.—Enjoy the beautiful unobstructed view of the waterway! An excellent corner lot to build your vacation home. Priced to sell at \$56,900.

Duneside Dr.—A panoramic view of the sound and bridge from this exceptional lot. Don't miss it! Reduced to \$88,900.



Darrell Cheers • Chris McMillan • Georgia McMillan • Chuck McMillan
 6266 Beach Dr., SW Ocean Isle Beach
 (910)579-9100 • 1-800-353-3533

HAPPY BIRTHDAY America

NEW LISTINGS!



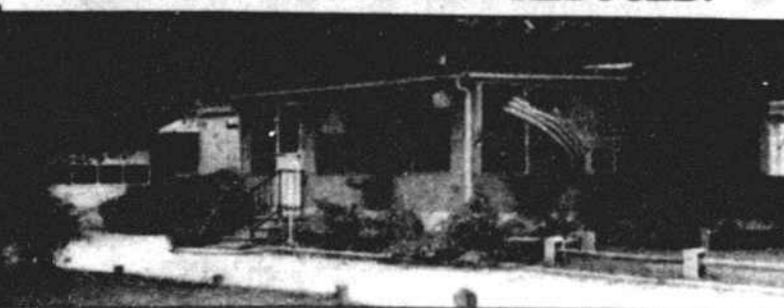
SEASIDE STATION—The place to be, close to the beach, golf and shopping. 1989 Mansion, like new and furnished. Nice landscaping, 10x14 deck, 6x10 covered entrance. Ideal vacation or permanent home. 2 BR, 2 baths. \$45,000.



TARHEELLAND ACRES—Ready to move into and enjoy the good life! Separate living, dining and family room, plus a sewing room! Lots of storage, 2-car garage, mature low maintenance landscaping, plus a low maintenance brick exterior. All this in a quiet, restricted waterway community. 3 BR, 2 baths. \$159,900.

SUPPLY—23.6 acres, 60 foot easement into wooded acreage. Possible housing site, create your own private park with woods to roam.

REDUCED! REDUCED! REDUCED!



A VACATION GET-AWAY THAT'S AFFORDABLE! Located in a waterway community with amenities that include pool and tennis. 2 BR, 2 baths. Close to Sunset Beach and Calabash. Reduced to \$32,000.



Put your trust in Number One.
 ©1994 Century 21 Real Estate Corporation
 Equal Housing Opportunity.
 SAC. OFFICE IS INDEPENDENTLY OWNED AND OPERATED
 BY THE BRUNSWICK BEACON

AUCTION SALE

10 Marshview Lots And 2 Intracoastal Waterway Lots

Saturday, July 2

First Sale 10:00 am - Marshview Lots

From Shallotte, take Hwy. 130 E. to SR #1134, Gray Bridge Road. Turn right. Go approx. 2 miles to SR #1135. Turn right, Tar Landing Road. Lots are across from entrance to River Hills. Look for signs.

Second Sale 2:00 pm - Waterway Lots

From Shallotte, take Hwy. 130 E. approx. 7 miles to Seashore Rd., SR #1139. Turn right, go approx. 2 miles to Gator Grant subdivision. Turn left. Go to waterway. Look for signs.

For information call:

Village Pines Properties or Simmons Realty
 (910) 754-4140 (919) 266-9525
 NCRBL #119337 NCRBL #38786

Patrick H. Simmons, NCAL #5365
 Jody Jay Simmons, NCAL #5364

TERMS: 10% the day of sale. Balance in 30 days or seller will finance 90% for 10 years at 10% interest. 10% buyer premium.