

Great American Values

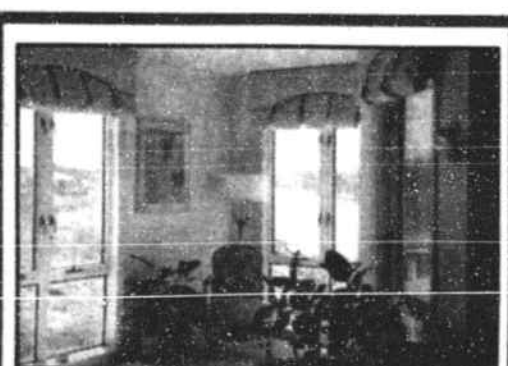


CAROLINA SHORES RESORT Unit 1204—In the heart of Calabash. 2 BR, 2 baths, screened porch, all appliances, excellent condition. Pool and tennis overlooking Carolina Shores Golf Course—Owner says SELL!!! \$39,500.

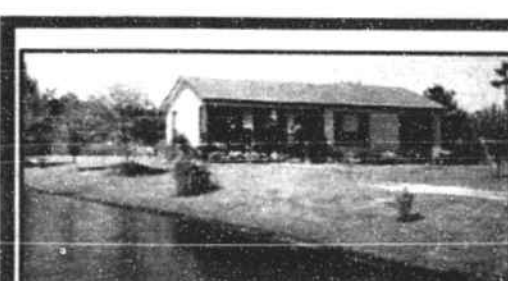
Unit 3202—1 BR, 1 bath updated unit with new carpet. Only \$23,900.



#9 COURT 12-NORTHWEST DR.—This home overlooks the 6th tee and a pond on the course. Perfect home for retirement or home away from home. Great view from enclosed porch. Great price. Community has pool, tennis, picnic area and clubhouse. ONLY \$94,900.



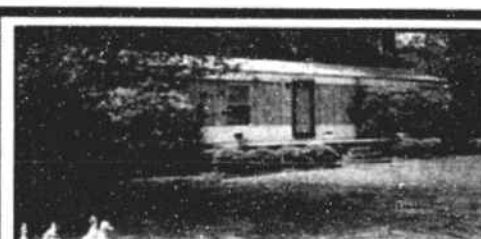
NORTH MYRTLE BEACH—Condo with a panoramic waterway view. 2 BR, 2 baths, living and dining, and kitchen all with waterway views. Priced to sell at \$97,500. Call for details.



1649 WHITE DUCK COURT—Wood Duck Retreat. A dollhouse. Both yard and home are perfectly maintained with pond on 2 sides with small pier. 3 BR, 1.5 baths, dining area, porch, storage shed, a great starter home, second home or retirement refuge. Must see this lovely yard with flowers, birch trees and a weeping willow. Affordable \$72,000.



63 CAROLINA SHORES DR—2100 sq. ft. of quality. Custom home on 4th fwy. Large GR w/dbl sized brick FP, cath ceilings, beams, skylights, beautiful Carolina rm. with air tight stove, split BR plan. This home has it all!!! \$164,000.



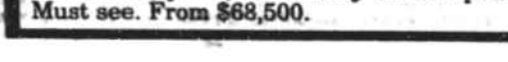
LOWER YOUR BLOOD PRESSURE! Relax and fish from your backyard. Lovely 3-BR furnished home on 2.5 lots in waterway community. What a buy at \$55,400.



LANDING II—Great brick home in desirable community with large MBR, enclosed porch, breezeway, brick FP, lots of possibilities. Large lot at high end of cul-de-sac. Close to beaches, golf and Intracoastal Waterway. Buyer's warranty.



CAROLINA SHORES VILLAS—The perfect home away from home located in golf course community with all amenities. Great views over course and pond. 2 BR, 1 1/2 baths, patio, beautifully landscaped. Must see. From \$68,500.



OCEAN ISLE—Off Culpepper St.—Imagine this view from your front porch! Best buy in the area on Intracoastal Waterway. Call Betty for more information.



A LITTLE PIECE OF COUNTRY—This 1992 Sterling measures 14x76; has 2 BR, 2 baths, loaded with many options. MBR has large bath with tub, shower and dual vanities. Center isle kitchen, ceiling fans. Quiet and private. \$39,900.



Your Place At The Beach!



Oak Harbour
\$109,900 (House & Lot)

Close to Beaches, Golf Courses & Intracoastal Waterway.
Affordable Living—But Elegant.



COMFORTABLE CONDO LIVING

CAROLINA SHORES, from \$68,900
MARINER'S WACCHE, from \$99,900
WATERWAY LANDING \$97,500
LITTLE RIVER INN, \$57,900
CHANNELSIDE, \$99,900
CAROLINA SHORES RESORT, from \$26,900
CAROLINA SHORES VILLAGE, from \$54,000
AND MORE!!!

Call for details!!!



7780 ETHERIDGE RD. SW—Brick home with 3+ acres, large equipment shed, plus 24x30 metal workshop. 3/4 ac. stocked fish pond. Ideal for someone to have home and business at same location. Call for appointment. \$79,900.



COOL OFF BY THE POOL! Charming 3-BR, 3-bath home in The Village At Calabash. Detached garage, fenced yard. Many extras. \$74,300.

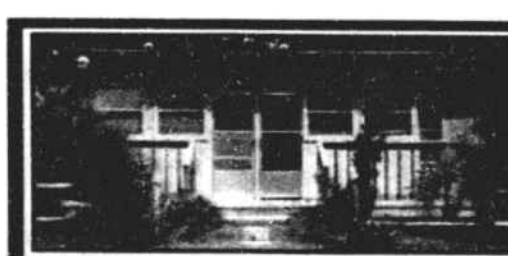


LOTS

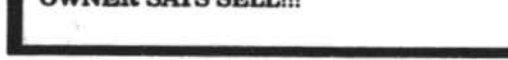
CAROLINA SHORES—Large corner lot, looking toward sixth tee. Very quiet and peaceful. \$37,000.

BRUNSWICK PLANTATION—This lot is located in the Charleston section. Lot has 123 ft. frontage on 2nd fairway. on cul-de-sac. \$39,900.

NEW LISTINGS in Ocean Forest. \$22,900, \$14,900, \$15,750.



DUPLEX—N. Myrtle Beach—JUST \$74,900. Two 2-BR units each rented for positive cash flow. Just several blocks from the oceanfront. Annual rentals. OWNER SAYS SELL!!!



ERA® - CALLIHAN, TEAL, SKELLEY & ASSOC., INC.

10239 Beach Road SW (Hwy. 179) Calabash, NC 28467
1-800-833-6330 • Local 910-579-4097

AGENTS: Bonnie Black • Jimmy Callihan • Ruby Mew • Carol Houghton • Betty Walton • Dennis Dinovelli • Jill Hope • Carl Graves
Bob McKean • Randi Moon • Jana Martin • Rental Manager: Patty Keyes • Broker in Charge: Charles L. Perry



Have a Safe and Happy 4th of July

© 1994 THE BRUNSWICK BEACON