

SLOANE REALTY (910)579-1144

a full service real estate company

800-237-4609



Sloane Realty has been selected as Exclusive Member Broker by Color-Net USA, the nation's first full color real estate listing firm. We serve the South Brunswick Islands area from Shallotte to the SC line. Your home can be shown to buyers from all over the country, in color! Come in today for a free demonstration.

ISLAND PROPERTIES

Drop by our office for information on our full listing.

OCEANFRONT



242 E. 1st St.—Duplex, 6 BR, 3.5 baths per side. \$525,000.



152 E. 1st St.—4 BR, 2 baths\$259,000.

- 288 E. 1st St.—3 BR, 2 baths.....\$235,000.
- 114 E. 1st St.—6 BR, 3.5 baths. \$245,000 east side of duplex only.
- 452 E. 2nd St.—4 BR, 2 baths on 2 lots.....\$179,900.
- 44 E. 1st St.—5 BR, 3 baths.....\$259,000.
- 334 E. 1st St.—4 BR, 2 baths.....\$219,000.
- 220 E. 1st St.—4 BR, 2 baths.....\$265,000.
- 266 E. 1st St.—4 BR, 2 baths.....\$179,900.
- 62 E. 1st. St.—Duplex, 6 BR, 3.5 baths each side, \$250,000 ea./\$495,000 total.
- 140 E. 1st St.—5 BR, 3 baths.....\$295,000.
- 82 E. 1st St.—3 BR, 2 baths.....\$229,900.

OCEANFRONT CONDOS

- A Place At The Beach—2 BR, 1 or 1.5 baths. Unit 1-B, side view, \$62,500; Unit 22-G, oceanfront, \$79,000.
- Oceanside West—Unit H-4. 2-BR, 2-bath side unit. \$92,500.
- Ocean Cove—1, 2 and 3-BR units. Unit #106, 1 BR, \$92,900; Unit 116, 1 BR, \$84,500; Unit 219, 1 BR, \$86,000; Unit 120, 1 BR, \$84,500; Unit 202, 2 BR, \$99,500 Reduced; Unit 208, 2 BR, \$112,500; Unit 301, 3 BR, \$195,000.

SECOND ROW HOMES

- 115 E. 1st St.—3 BR, 3 baths\$239,000.
- 365 E. 1st St.—4 BR, 2 baths.....\$125,000.

SECOND AND MID-ISLAND CONDOS

- Mariner's Walk—1 BR, 2 baths or 2 BR, 1 bath. Unit 4, 2 BR, \$55,000; Unit 6, 1 BR, \$48,500.
- Channel Harbour—1 BR, 1 bath, bunk area. Unit 6D, \$65,900.
- Starboard by the Sea—3 BR, 2 baths. Unit 3A, \$85,000; Unit 2B, \$86,000; Unit 5A, \$95,000.
- Channelside—2 BR, 2 baths. Unit 2C, \$79,500.
- Sand Dwellers—2 BR, 2 baths. Unit A-3 Project II, \$69,900; Unit 18-E, Project II, \$67,500.
- Dockside Landing— Unit L, Bldg. 3, 2 BR, furnished, \$74,500; Unit J, Bldg. 1, 1 BR, furnished, \$57,500; Unit L. Bldg. 2, 2 BR, furnished, \$74,500.

CANAL HOMES

- 26 Anson St.—4 BR, 2 baths.....\$150,000.
- 6 Wilmington St.—4 BR, 2 baths.....\$142,000.
- 50 Anson St.—4 BR, 3.5 baths.....\$349,500.

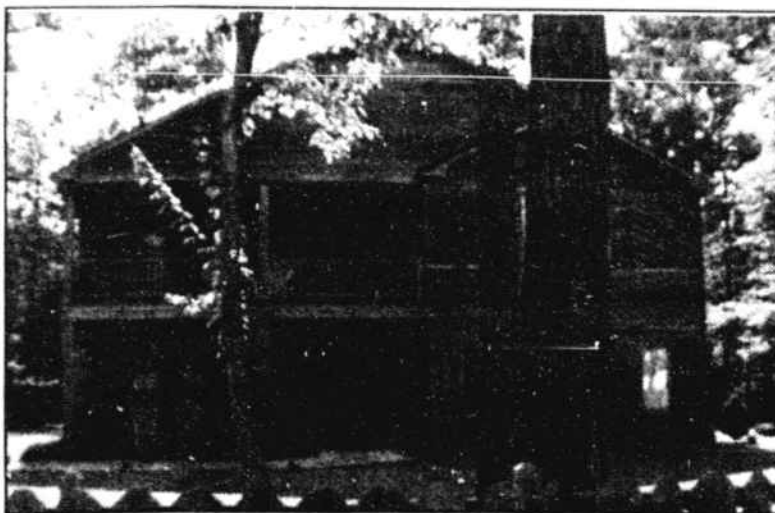
ISLAND LOTS

- Build your own dream. Choose from a variety of island lots:
- Second row from \$79,900 Fourth row from \$42,000
 - Third row ..from \$35,000 Canal lots..from \$62,500

MAINLAND PROPERTIES



30 Queen's Grant Ct., Brierwood—New 4-BR, 3.5-baths. \$197,500.



1512 Horse Branch Rd.— 3 BR, 3 baths..... \$193,900.

- 166 Sandridge Ct. SE, Laketree Shores—Brand new 3 ER, 2 baths. \$116,000.
- Seaside—4 BR, 2 baths\$74,500.
- 2968 Mare Dr. SW—4-BR, 1-bath.....\$40,000.
- 3807 Holden Rd., Shallotte Point—3 BR, 2 bath. \$66,500.
- 5161 Greene Heron Dr.—3-BR, 2-bath 1993 doublewide. \$55,900.
- Lots! Lots! In many locations in Brunswick County. Call an agent for a full listing today.

On the Intracoastal Waterway near Ocean Isle Beach



- *90% bank financing
- *Home and lot packages from \$92,900
- *Lots from \$24,900.
- *Clubhouse, pool with Jacuzzi, tennis courts
- *Private boat ramp and docks.

A private community between Ocean Isle and Sunset Beach



- * 90% bank financing
- *Home and lot packages from \$84,900
- *Large wooded homesites from \$16,900
- *Clubhouse and swimming pool
- *Model now open!

GOLF COURSE PROPERTIES

Oyster Bay Plantation—2 BR, 2 baths. Several available. From \$98,000.

Bricklanding Plantation, Mariner's Wacche—#3107, 2 BR, 2 baths, \$105,900; #A1103, 2 BR, 1.5 baths, REDUCED TO \$78,500. #3204, 3 BR, 2.5 baths, \$117,900; #4202, 3 BR, 2.5 baths, \$117,900.



At Oyster Bay

1 and 2 bedroom condos adjacent to Oyster Bay Golf Course, Sunset Beach

- *From \$68,900 fully furnished
- *Private putting green
- *Outdoor pool & hot tub
- *Heated indoor pool & exercise room
- *Successful rental program available.

COMMERCIAL OPPORTUNITIES

Corner Frontage on Hwy. 179 and Sunset Blvd., Sunset Beach—2 valuable lots with buildings. Existing business in place. Reduced to \$399,000.

Hwy. 179 between Ocean Isle and Sunset Beach—180 ft. road frontage. 2 office bldgs, retail storage and warehouse, total 9,354 sq. ft. Good rental income. \$225,000.

Hwy. 179 and 904—Commercial lot from \$75,500 for 100 ft footage.

Village Point Road and Hwy. 179—71+ acres, prime dev. property. Call for details.

Hwy. 17 S. of Shallotte—112+ acres past Brunswick Plantation Golf Course. Call for details.

Corner Hwy. 17 and Union Primary School Rd.—4 mi. s. of Shallotte, 1.99 acres. \$125,000.

If we don't have your perfect home in our inventory, Sloane Builders will build to your specifications and budget. Whatever your real estate needs, call us today!

SLOANE REALTY

