

Brunswick Blessed With Great Golf Courses

BY DOUG RUTTER

The temperature is starting to cool down but things are just starting to heat up on area golf courses, where the fall is one of the busiest times of the year.

Visitors from near and far will be flocking to Brunswick County over the next couple months just for the chance to play some of our breathtaking and challenging golf courses.

Brunswick is already home to 21 championship golf courses, and the family is growing every day.

The most recent addition to the area's golf treasure chest is Panther's Run, located adjacent to Lion's Paw at Ocean Ridge Plantation on N.C. 904 near Sunset Beach.

Nine holes on the Panther's Run course recently opened and the next nine are expected to be ready for the fall of 1995.

Two more golf courses are starting to take shape adjacent to the Sea Trail Plantation property along N.C. 904 and Old Georgetown Road at Sunset Beach.

Golfers now have 16 courses to choose from in the South Brunswick Islands area that includes Shallotte, Holden Beach, Ocean Isle Beach, Sunset Beach

and Calabash.

Visitors to the Sunset Beach and Calabash area in particular will find

a heavy concentration of courses, with 12 outstanding layouts within a few square miles.

Below is a complete listing and description of Brunswick County golf courses:

An Impressive Lineup

Course	Par	Yardage	Location
Bald Head Island	72	7040	Marina/Southport
Brick Landing	72	6943	Ocean Isle Beach
Brierwood	72	6700	Shalotte
Brunswick Plantation	72	6800	Hickmans Crossroads
Carolina Shores	72	6757	Calabash
Fox Squirrel	72	6762	Boiling Spring Lakes
Goose Bay	27	1,073	Shalotte Point
Lion's Paw	72	7003	Sunset Beach
Lockwood Links	72	6836	Lockwood Folly
Marsh Harbour	71	6690	Calabash
Oak Island	72	6608	Yaupon Beach
Ocean Harbour	72	7004	Sunset Beach
Ocean Isle	72	6637	Ocean Isle Beach
Olde Fort	72	6200	Hwy. 133, Winnabow
Oyster Bay	70	6695	Sunset Beach
The Pearl: East	72	6895	Old Georgetown Road
West	72	7011	Old Georgetown Road
Sandpiper Bay	71	6503	Old Georgetown Road
Sea Trail: Maples	72	6751	Sunset Beach
Jones	72	6761	Sunset Beach
Byrd	72	6750	Sunset Beach
The Gauntlet	72	7068	Southport

region. The short 17th hole requires a tee shot to a small green overlooking the waterway. Balls hit too firmly from the elevated tee often end up with the fish.

Accuracy is a premium at The Brick, located south of Shallotte and east of Ocean Isle Beach on N.C. 179.

The course folds naturally into the terrain and features bulkhead greens, pot ponds, marshland and more than 60 sand bunkers. Experience counts for a lot on this course, so you may want to play it more than once.

Brierwood

Brierwood Golf Club located on N.C. 179 on the outskirts of Shallotte is the oldest course in the South Brunswick Islands, but it remains a favorite among locals.

Brierwood's reasonable rates and well-conditioned fairways and greens make it a popular choice among area golf associations, tourists and senior golfers alike.

Despite its age, Brierwood demands a variety of shots and can still offer one of the most enjoyable rounds of golf in the county.

Brunswick Plantation

Heading into its second full year of operation, Brunswick Plantation & Golf Links is one of the area's newest courses.

The Willard Byrd layout features bunkers that flank the sloping landing areas on par 4s and 5s, putting an emphasis on placement rather than distance.

The greens are large and undulating, which places a premium on approach shots and putting. A par 3 featuring an island green is one of the course's biggest highlights.

Brunswick Plantation is located on U.S. 17 about three miles north of the South Carolina state line.

Carolina Shores

If you come to the beach, you have to expect to get some sand between your toes. Carolina Shores Golf & Country Club won't let you down.

The Calabash course features an intimidating 96 sand traps. Combined with fresh water lakes, Carolina Shores is a challenging

(Continued On Page 20)

Make Fox Squirrel
Your Next Vacation Stop!
Play our fabulous course at
our fabulous price.

Cart & Green Fee \$20 All Day!

Rick Vigland—PGA Professional.

Call 845-2625 for tee times.

Golf Course Lots Now Available!

Call the Reeves Telecom

Land Sales Office at 910-845-2106

Located on the lakes in Boiling Spring Lakes
(6 miles north of Southport)



Bald Head Island

Golfers looking for a beautiful course off the beaten path need look no farther than Bald Head Island Golf Club. The remote island off Cape Fear is accessible via a 20-minute ferry ride from Southport.

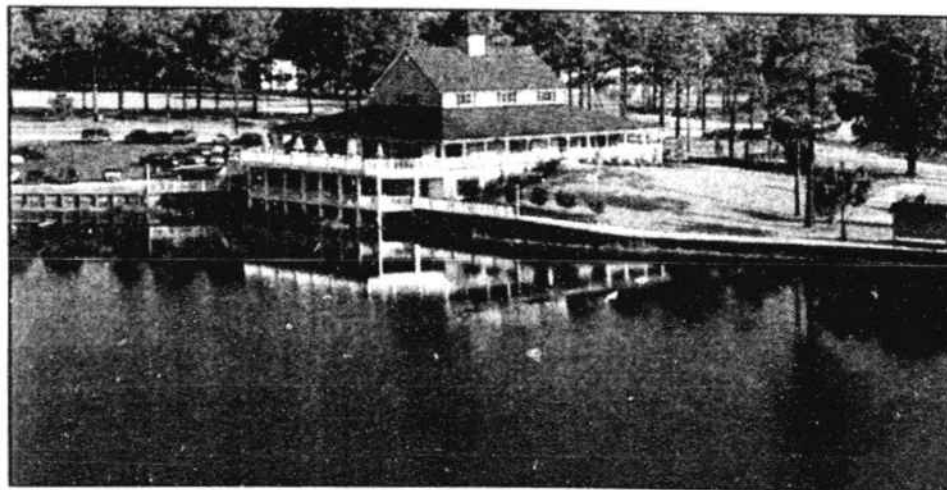
Salt marshes, tidal creeks and more than 800 acres of maritime forests provide the backdrop for the island's George Cobb-designed golf course. The par-72 measures 7,040 yards and navigates 15 freshwater lagoons, challenging players on every hole.

Brick Landing

With three holes skirting the Atlantic Intracoastal Waterway, Brick Landing Plantation offers some of the most breathtaking views you'll find in Brunswick County.

The course features one of the most memorable par threes in the

The First Golf Course In The South Brunswick Islands



18 HOLE CHAMPIONSHIP COURSE

Welcome to...



A Golf Course Community

Call for starting time 24 hrs/day 910-754-4660

Real Estate Information 910-754-7076

Hwy. 179 at Shallotte City Limit