

Reap What You Sow—And More

BY DEBBIE RUPP

Vice-President For Organizational Development
South Brunswick Islands Chamber Of Commerce

The South Brunswick Islands seem to be growing every day with new businesses arriving, existing operations expanding and neighborhoods seeing new construction throughout the area. We welcomed more than 65 new members to the chamber in the past year, and almost half the incoming business members are new to the area.

When my husband and I chose Shallotte to put our stake in the ground and build his dental practice, we knew we had also put a stake in the whole South Brunswick Islands community. One way we chose to help safeguard our investment and our future here was to get involved in civic and professional organizations and work together with other businesses and professionals in the area.

We joined the South Brunswick Islands Chamber of Commerce because it's an organization central to the community and its primary focus is on promotion of the civic and economic progress of the South Brunswick Islands. We started by volunteering for committees and chamber-sponsored events which gave us an opportunity to see firsthand the activities and results the chamber promoted and the type of people who supported its work. We are continually impressed with the enthusiasm and camaraderie of the volunteers and staff and with the results these people achieve together.

A dental practice is not what many people think of as a "typical" chamber member in a beach community. We are not related to tourism or real estate or entertainment. But our business—like every other business, large or small, in the South Brunswick Islands—relies on the growth and prosperity of the community.

We are no different from the hundreds of other people and businesses who volunteer time and invest each year with their membership. What chamber members get in return can't always be seen directly on a financial statement, but we all know, without a doubt, that what we put into the chamber comes back to us many times, and the benefits we reap go well beyond the bottom line.

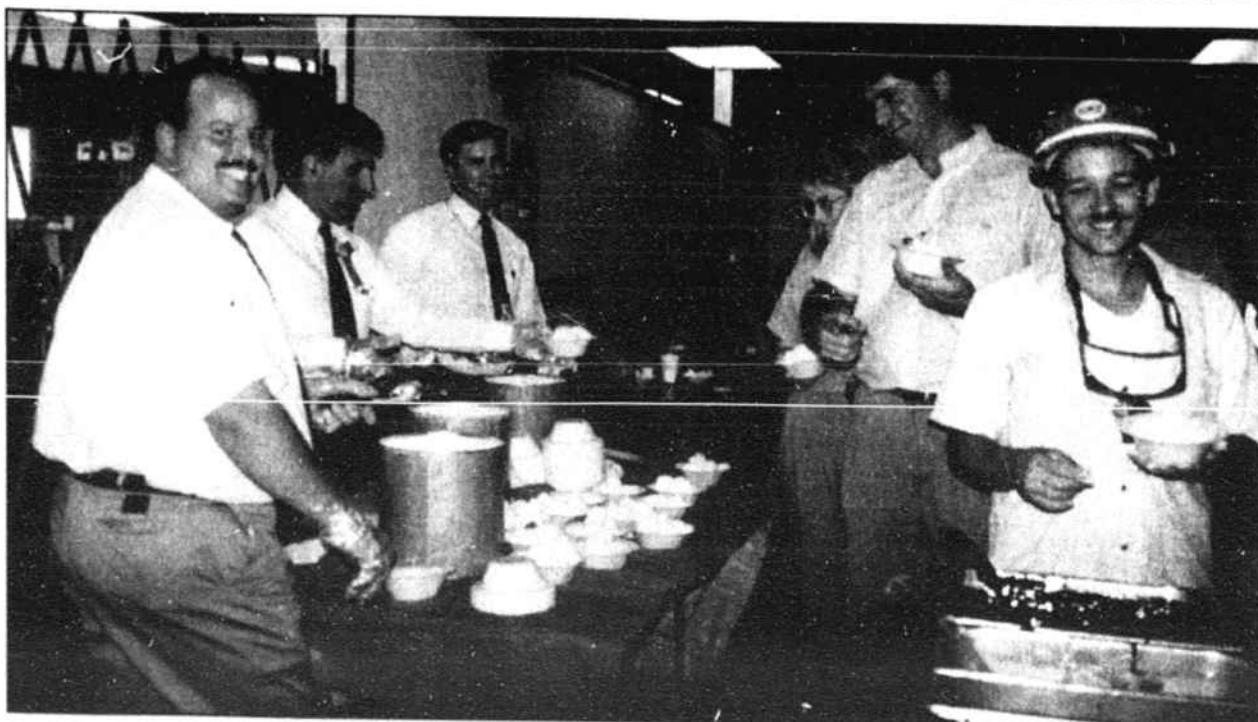
If you are not currently a chamber member, we encourage you to join now. If you are a chamber member, it's time to renew your investment and continue to be a part of a strong and exciting group who join together to make the South Brunswick Islands a better place to live and work. You can contact the chamber office at P.O. Box 1380, Shallotte NC 28459, or call 754-6644 or 800-426-6644, for more information on membership.

You can also call us to register for the South Brunswick King Classic King Mackerel Tournament. We are expecting more than 200 boats and lots of fish, fun and festivities at this year's tournament to be held Sept. 15-17 at Holden Beach Marina. Even if you don't fish, you are encouraged to attend and enjoy the food and musical entertainment.

We still need volunteers for the King Mackerel Tournament and the N.C. Oyster Festival. If you are interested in helping with either event or any chamber activity, please give us a call. We encourage you to participate and reap the many benefits of chamber membership.



RUPP



Sweet-Toothed Celebration

Brunswick Nuclear Plant managers scoop out ice cream for employees during a recent party celebrating the longest run ever for the plant's Unit 1 reactor. Managers preparing the sundaes are (from left), Jimmy Blackburn, Unit 1 instrumentation and calibration manager; Rich Lopriore, regulatory affairs manager; and Bill Levis, Unit 1 manager. As of Sept. 8, the unit had been running at 100 percent power for 208 days.

SET FOR OCTOBER 9

Load Management Participation Focus Of BEMC's Annual Meeting

At its Oct. 9 annual meeting at Brunswick Community College, Brunswick Electric Membership Corp. plans to launch a new appeal to members to participate in the co-op's load management program.

The load management system uses computer-controlled switches to hold down extreme peaks in energy use, both conserving energy and saving BEMC members money, since the cost of energy purchased from suppliers such as Carolina Power & Light Co. is based on peak demand, said Philip Morgan, member services representative.

General Manager David Batten will explain the need for and benefits of load management in a slide presentation for members. The co-op wants to have more than 10,000 of its member-customers on load management by 1997.

BEMC offers monthly rebates to members who install switches that allow their air conditioner and/or water heater to be shut off for a few minutes at a time when energy demand is highest.

Using as its theme "The Co-operative Spirit At Work," the annual meeting will be held for the second year in a row in BCC's 1,500-seat Odell Williamson Auditorium. Registration begins at 8 a.m. and continues up until the business meeting begins at 10:30 a.m.

For the first time in at least 10 years, no director's election will be contested. As of the 5 p.m. Monday cut-off, no candidates had been nominated by petition in addition to the four incumbents put forward by the nominating committee that met

Sept. 6. Nominations are not allowed from the floor at the annual meeting.

Up for election by acclamation are, from Brunswick County, Hubert K. Brittain, District 7 (Bolivia and Winnabow); Bryan R. Smith, District 9 (Sunset Beach, Calabash, Longwood, Thomasboro); and from Columbus County, Calvin Duncan, District 10 (Evergreen, Oakdale and Western Prong) and Monroe Enzor Jr., District 11 (Cerro Gordo and Tabor City). Enzor was appointed to the board following the resignation of Leroy Williamson of Evergreen, whose term was to end this year.

Adding to the fair-like atmosphere of the annual meeting will be a refreshment tent, educational exhibits and a members' arts and crafts show open before the business meeting and live entertainment scheduled from 9 a.m. until 10:30 a.m. The line-up includes country singer Gaye Fulford of Varnamtown, The Guiding Lights gospel group of Bolivia, Tiny Miss Southland Mallory Malter of Wilmington, The Double Dutch Rope Jumpers of Fayetteville. The Pillsbury "Dough Boy" will circulate through the crowd giving away

recipe booklets.

An auction begins at 8:30 a.m., featuring surplus co-op equipment and items on consignment from members.

BEMC recently added its 50,000th connection. Its service area consists mainly of Brunswick and Columbus counties.

SMALL BUSINESS INSURANCE

We protect the most important businesses in the world.

From contractors to apartments...clothing stores to printing shops, more businesses are turning to Nationwide for the reliable insurance coverages and superior service they deserve.

- Coverages for buildings, vehicles, business personal property, liability, workers' compensation, and more
- Blue Ribbon Claims Service Guarantee
- Strongest financial rating available

Give us a call and find out how we can protect your important business.



Phillip W. Cheers
4700 Main St.,
Shallotte
754-4366

NATIONWIDE INSURANCE
Nationwide is on your side
Nationwide Mutual Insurance Company and Affiliated Companies
Home Office: One Nationwide Plaza, Columbus, OH 43216
Nationwide's a registered federal service mark of Nationwide Mutual Insurance Company

Small Business Seminars Set By Brunswick Community College

Seminars on dealing with difficult people, computerized bookkeeping and getting acquainted with computers are scheduled by the Brunswick Community College Small Business Center during September.

"Dealing with Difficult People" will be presented Tuesday, Sept. 20, at 6:30 p.m. in the ALS Building on BCC's main campus in Supply. Speaker for the free seminar will be May Craven.

"Quickbook," a small business accounting software package, will be the topic on Monday, Sept. 19, at 7:30 p.m. in the Classroom Building on the main campus. Brian Hamilton will lead the three-hour seminar through the introductory uses of Quickbook, including charts of

accounts, payroll, checkbook balancing and printing various reports. Pre-registration is suggested; space is limited.

"Introduction to Computers" will be presented Saturday, Sept. 17, from 8:30 until 11:30 a.m. The seminar will provide a layman's view of computer hardware, including the central processing unit, monitor, keyboard, mouse and memory. An overview of the operating system MS-DOS and Windows, as well as applications software, will be included. The class will meet with instructor Pete Lee in the Classroom Building on BCC's main campus.

To pre-register for the seminars call the BCC Small Business Center at 754-6900.

NABER

CHRYSLER, PLYMOUTH
DODGE, JEEP, EAGLE, INC.
IN SHALLOTTE



★ ★ SERVICE MANAGER SPECIALS ★ ★

Oil and Filter Change
\$13.95

(up to 5 qts. oil and filter • Vehicles requiring special oil and diesels higher)

Air Conditioning Service Special
\$39.95

(Includes leak test, partial charge and diagnosis)

Summer Cooling System Service
\$49.95

(Includes radiator flush, thermostat and coolant)

Auto Transmission Service
\$59.95

(Includes filter, fluid and necessary adjustments)

Full Wheel Alignment \$49.95

Offer good through September 21, 1994. Applies to domestic Chrysler, Plymouth and Jeep vehicles. Must present coupon at service department.

We service domestic cars and light trucks as well as most imports.

Your Chrysler Corporation vehicle may have a recall.
Call our service department for verification.

FREE

52 POINT INSPECTION OF YOUR VEHICLE

Service Department Hours 7:30-5:00 Monday-Friday

Business 17 North of Wal-Mart and Across from Joe's BBQ in Shallotte

754-2811 or 1-800-754-2811

Wouldn't you rather do business with a NABER?



SEPTEMBER 17-18, 1994
TRASK COLISEUM, UNC-W

So Much to See and Buy for Two Exciting Days!

The latest building products, the best decorating ideas and more ...

Shopping for your home will never be easier or more fun!

Show Hours:
Saturday 10am - 8pm
Sunday Noon - 6pm

Admission:
Adults \$2.50
Senior Citizens \$2.00
Juniors (6-16) \$2.00

For free admission present this coupon at HOME EXPO.

Sponsored by:
Wilmington-Cape Fear Home Builders Association

Presented by:
SpecComm International
For exhibit space contact Jim Swindell or Mary Taylor (800) 346-SHOW



Demonstrations

ANSWERS TO YOUR QUESTIONS ON BUILDING AND REMODELING

Experts from the Wilmington-Cape Fear Home Builders Association will be available to answer your questions.
Saturday & Sunday at all times

RESIDENTIAL DESIGN COORDINATORS

"Custom designing your home for lifestyle accessibility." Hear from an expert on designing homes for this ever increasing market of people in wheel-chairs or with other special needs.
Saturday 1:00; Sunday 2:00

WILMINGTON GALLERY OF ORIENTAL RUGS

Come learn the origins of "how made, how to purchase, care and maintenance, decorating and investment value" of oriental rugs.
Saturday 2:00

SHORELINE DESIGN GROUP

"Custom Home Design in the 1990's." Professional advice on how to design and plan your home from conception to completion.
Saturday 3:00; Sunday 3:00