

Loans On Soybeans Sought To Ease Damage Problem

With the expected concern over the damage to the soybean crop affecting the many farmers of the Albemarle area, a group of producers and agricultural workers met in Elizabeth City last week-

end to perfect arrangements that might ease the problem. Efforts are being made to secure some new arrangement in the grading of the crop, along with some help from the Commodity Credit Corporation. An application has been made to the State ASC Committee for permission to borrow money from the CCC on stored beans. It was pointed out at the meeting soybean buyers have expressed the opinion soybeans from this area this season are suitable only for oil purposes, and since crushers have limited storage facilities, loans on soybeans

will permit farmers to store the beans and market them at a time which will not cause a "flood" of the market and a collapse of the price level. R. M. Thompson, Perquimans Farm Agent, reported this week it is as yet unknown if this loan arrangement will be permitted but he stated in the event it is, farmers will be notified and he urges soybean producers to take advantage of the opportunity to stabilize the marketing of soybeans this year.

Bride-elect Honored At Several Parties

Miss Alvis Perry, whose marriage to Burwell Riddick Winslow will take place Saturday, November 17, was honored with a coffee hour and shower at the Whiteson Community Building Friday night, November 2. Hostesses were Miss Johnnie White, Mrs. P. E. Winslow, Jr., Mrs. Merrill Winslow and Mrs. Clyde Lane.

The building was beautifully decorated with arrangements of yellow fall flowers and autumn leaves. The coffee table was centered with an arrangement of yellow mums in silver bowl flanked by yellow candles in silver candelabra. Coffee was poured by Mrs. Lewis Stallings of Hertford.

Miss Perry received many lovely gifts.

Mrs. Maebelle Winslow entertained with a dinner party at her home near Hobbsville honoring Miss Perry and Mr. Winslow on Sunday night, November 4.

The home was beautifully decorated with mixed fall flowers. The bride's table was centered with an arrangement of yellow mums in a silver bowl and flanked by candles in five branches candelabra accented with tiny wedding bells.

Covers were laid for 18 and a delicious four-course dinner was served.

Miss Perry was presented a gift of crystal.

Mrs. James Ward and Miss Lanelle Ward honored Miss Perry with a tea on Saturday afternoon, November 10, at the home of Mrs. Ward. The home was decorated with mixed fall flowers and lighted candles. The tea table was covered with a cutwork cloth and centered with an arrangement of yellow mums and candles. Russian tea and coffee was poured by Miss Inez Perry, assisted by Mrs. Paul Ward. Others serving were Mrs. Maebelle Winslow, Miss Donnie Ward and Miss Patsy Ward.

Miss Perry was presented a place setting of silver and crystal in her chosen patterns.

CIRCLE MEETS

The Blanche Meekins Circle met Friday night, November 9 with Mrs. Joseph Rogerson. The meet-president. After the business meeting was called to order by the reports were taken care of and the reports from various committees giv-



Jimmy G. Jones, son of Mr. and Mrs. S. D. Jones of Route 3, Hertford, was promoted to Marine Sergeant on October 1 at the Marine Barracks of the Miramar Naval Air Station, San Diego, Calif.

Sgt. Jones graduated from Central High School in Elizabeth City, before entering the service in July, 1953.

on the Blanche Meekins Circle and the Bright Jewels took as their project to buy 2 curtains for the church and the circle also decided to fix baskets for the sick and shut ins for Thanksgiving. Mrs. Preston Nixon gave the devotional, reading the 28th chapter of Job, 12-15 verses and prayed the United Nations Prayer. Charlotte Matthews had charge of the program based on "The United Nations"

"We've a Story to Tell to the Nations" was sung and the Circle was dismissed with the benediction. Delicious refreshments were served by the hostess.

Peanut Forecast Is 294 Million Pounds

N. C. peanut production as of September 1 is estimated at 294 million pounds compared with 204 million pounds in 1955 and 287 million pounds in the 10-year average. The low

yield of 1,500 pounds per acre compared with last year's low yield of 1,075 pounds and 1,218 pounds for the 10-year average. The low

damage brought about by hurricanes. The Southern Pulpwood Conservation Association, which conducted the tree planting survey, announced that this is the third year in succession that the pulp and paper industry has planted more trees than they cut over a similar period.

TRY A WEEKLY CLASSIFIED

TRY A WEEKLY CLASSIFIED

WE PAY

Top Prices

FOR YOUR

CORN — SOYBEANS — PEANUTS

We Buy Hogs Daily

Place Your Order Now For PFISTER'S SEED CORN For Early Spring Delivery!

J. F. Hollowell & Son

PHONE 2841

WINFALL, N. C.

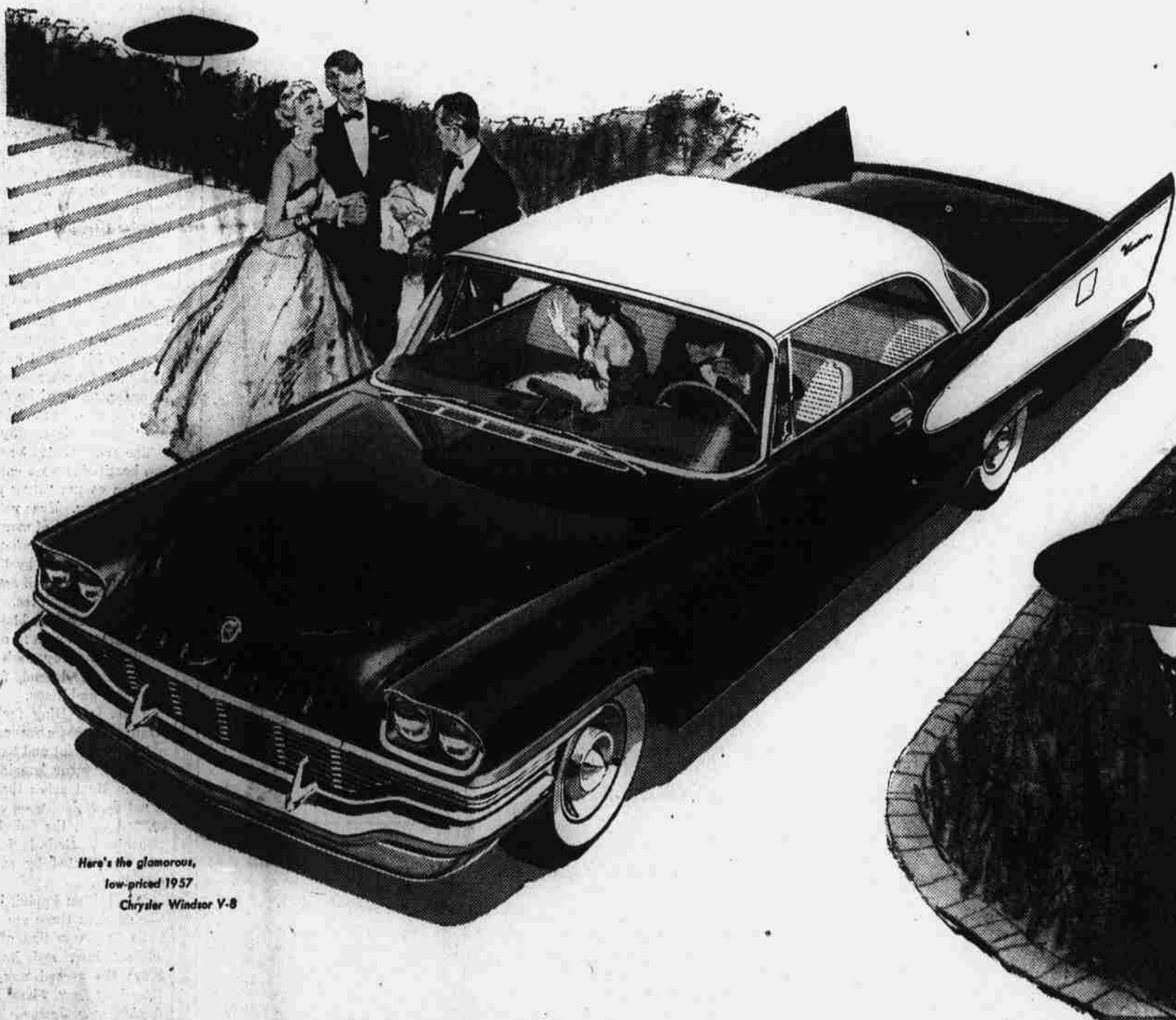


Joe & Bill's Service Station



Ray White, Prop.

THE MIGHTY CHRYSLER FOR 1957



Here's the glamorous, low-priced 1957 Chrysler Windsor V-8

Announcing the most glamorous car in a generation!

You never looked or felt as good in anything before!

Other cars have changed models . . . this one changes motoring. Look at its rich, racy lines . . . at the long, low silhouette . . . at the dramatic upsweep of the rear fenders that plume back from the waist like the wake of a hydroplane. It's a streak of a car with the elegance of the boulevard and the spirit of the speedway.

Get into this car, drive it into traffic or out on the open highway and you enter a new domain of travel. In the 1957 Chrysler, with its new Torsion-Aire Ride, motion has a new "feel". And wait till you toe the throttle. A new Pushbutton TorqueFlite Transmission teams with a mighty airplane-type V-8 engine, developing up to 325 horsepower, to give you a new high-velocity getaway, matchless passing power when you need it.

Come in this week and visit our showrooms. See and drive the most completely new car of the year!

Torsion-Aire Ride pours the road under you!

Try Chrysler's new Torsion-Aire Ride and you'll think some of the laws of gravity, motion and inertia have been suspended in your favor. No more rock and roll. No more pitch when you stop. Chrysler's new torque rod suspension and lower center of gravity give you a brand new ground-skimming "feel" of the road. The wheels ride the contours . . . but you don't. The road just pours under you.

Magic Chef HOME HEATERS

ORDER NOW! PAY LATER! on our easy terms!



A Big Check For Christmas ... Yours For Easier Giving In 1957

Next year, don't let the Santa-season take you by surprise. Join our 1957 Christmas club now. Make a small deposit every week, and little by little, your savings grow till you have a good-sized check . . . enough to cover all your Yuletide buying, including a gift from you-to-you!

CLUBS FROM 25c TO \$5.00 WEEKLY

Hertford Banking Co.

Member F.D.I.C.

Towe-Webb Motor Company, Inc. — Phone 2461 — Hertford, N. C.