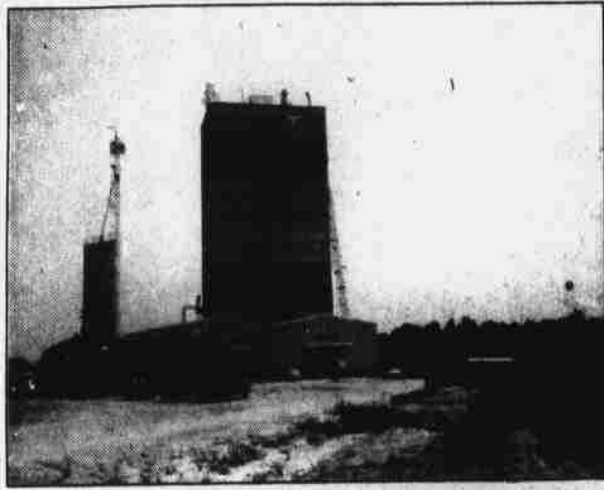


# Perdue Means Progress

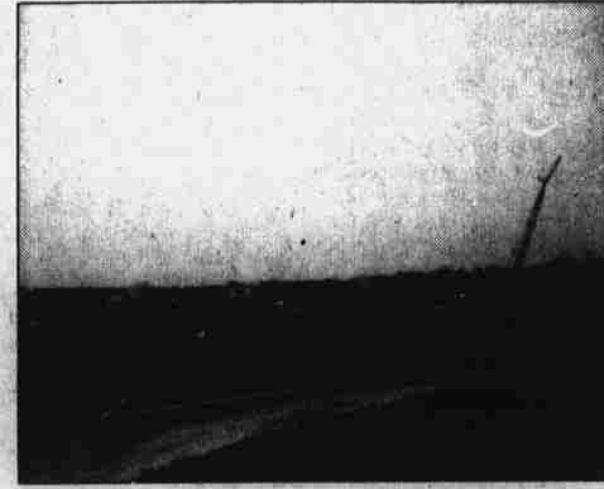


**Processing Plant Site: Completion Date 3-1-76**

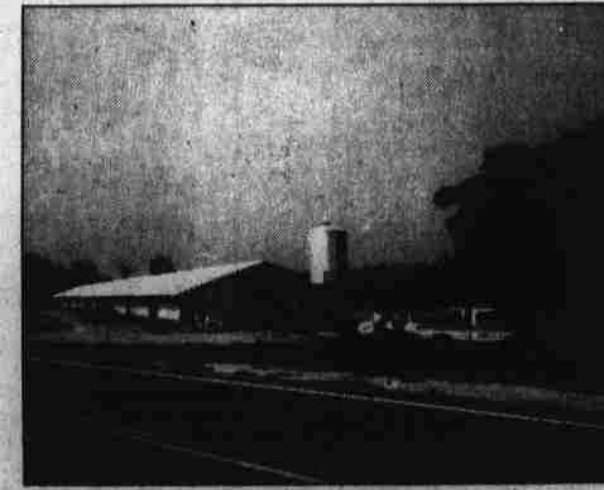


**Feed Mill Site: Completion Date 9-1-75**

**Garage Site**



**Hatchery and Office Complex Site: Completion Date 1-15-76**



**Temporary Offices**

**132 Houses Committed**

*If you want to grow with the business that's growing bigger every day call Perdue collect and find out how you can start earning a minimum guaranteed income of \$48,000, or an average income of \$59,000, and take the gamble out of your farming operation.*

**Ask Your Neighbor, then call Perdue**



Sales Office 332-8111  
 Ahaskie Office 332-5041  
 Tommy Lowe 332-5201  
 Ray Marlowe 398-4038  
 Henry Shackelford 398-3796  
 Rock Vinson 398-4205

Minimum Guarantee For 6 Years	Average Payment For 6 Years
<b>\$48,000</b>	<b>\$59,000</b>
(30 Rocks)	(30 Rocks)

Over 1,600,000 chickens now growing in the R-C area.