

### Textiles Rate "Urgent" in WPB Order

Through the joint WPB, WMC, OCR and of Economic Stabilization... giving to major sections... file industry a "Band... with respect to product... This is the highest rating... be given an entire indus... 1 and 2 are applicable... cial emergency situatio... to particular commoditie... prices.

The new production... ing gives Erwin plants... equal to tanks, aircraft... It represents recognitio... Government that textiles... military and civilian re... now constitute an extrem... production problem.

#### FIGHT INFLATION

Even the Army has l... than it needs. To esp... situation salvage units... close to the front lines... ments, tents—anything... cloth—was cleaned and rep... be used over. Take a tip fr... Army—repair, mend, make... And do your country a do... service by putting the money... save into war bonds, life insurance... savings. That's the way to head... off inflation.

#### BACK THE MIGHTY 7TH!

### Harris Named to WLB Commission

Carl R. Harris, vice-president and assistant treasurer of the Erwin Cotton Mills Company, has been named alternate industrial member of the Southern Commission of the War Labor Board studying the rate structure of Northern and Southern textile mills.

This commission has been set up along with one for the Northern district by an order of February 20 this year. The order involves twenty-three Southern cotton textile companies and twenty-five New England cotton and rayon companies. In addition, there are included with the order six New York and Pennsylvania rayon companies.

William Pollock, of New York, general secretary-treasurer of the CIO Textile Workers, will serve as labor member for both commissions, with Frank McAlister of Atlanta, an executive member of the Atlanta WLB, as alternate labor member of the Southern Commission.

Richard Lester, of Durham, N. C., is chairman of the Southern Commission.

under... of Th... large be... only two... on this year... three.

Now more than... tant to participate in... War Bonds and then al... them to hold on to them... in the Pacific has now finally... come free for the full focus of public attention and it is up to the home front to aid in every way in helping to "clip the nips." This can best be done by sticking to jobs. Not only can the worker actually do his bit in helping produce the essential war goods, but also he can earn money to pay taxes and to buy bonds so that now in war, and in the peace to come, the American economy can stand the tremendous strain put upon it.

Erwin employees have been participating regularly in payroll allotments for bonds and it is believed that most of the family (6,400 strong) have been holding on to their bonds in the drive against inflation and in preparation to insure the rainy days that may come in the wake of final world peace.

Bond committees have been appointed in each plant and department. It will not be difficult for any employee to find someone to help him in getting his share of these investment bonds. With a sure return of four dollars for three, a bond is considered the best buy of the year.

While Erwin enjoys the distinction of being one of the companies of which every plant has 90 per cent of its employees participating in payroll savings plans through War Bonds, it still has not reached that goal of "every employee a ten percenter." Those in charge of putting this drive over do so with pride in their expectation that every worker will try to raise his or her purchase to an amount of ten per cent of the paycheck. IT CAN BE DONE.

Photo by Herald-Sun

### Safety Record at Plant 4

that Plant No. 4... having completed... 0,000 hours with... accident, had its... when a warp hand... when lease rod which... the floor, causing... strain his back... first lost time acci... for many months... on how this will... performance in

interview with Mr... endent, he stated... were they discour... they were ready to... million man hour... len further stated... of employees with... and desire to work... about better rec... are regardless of... part of a contest or... performance.

ifying to note that... the employees of... not letting a broken... down but rather... reason for trying... ne.—W. G. Marks.

### Ruffin Named to NAM Committee

It was announced this month by Ira Mosher, N.A.M. president, that William H. Ruffin, vice-president and treasurer of the Erwin Cotton Mills Company, has been appointed to the National Association of Manufacturers' special committee on labor-management relations.

The committee's functions will be to advise the association president and the board of directors on labor-management problems and policies. The committee has just been formed and no statement of specific problems to be immediately considered is yet available.

This appointment is particularly one which the entire personnel of the Erwin family is proud, for Mr. Ruffin is the only southern manufacturing executive to be appointed to this very important committee. All others are from northern concerns administrative staffs namely, Aluminum Company of America, National Cash Register Company, American Cyanamid Company, Pratt and Whitney division of the Niles-Belmont-Pond Company, Al-lis Chalmers Manufacturing Company, Sun Oil Company, General Motors Corporation, and Republic Steel Corporation. It is also to be noted that Mr. Ruffin is the only member representing the textile industry.

Photo by Herald-Sun

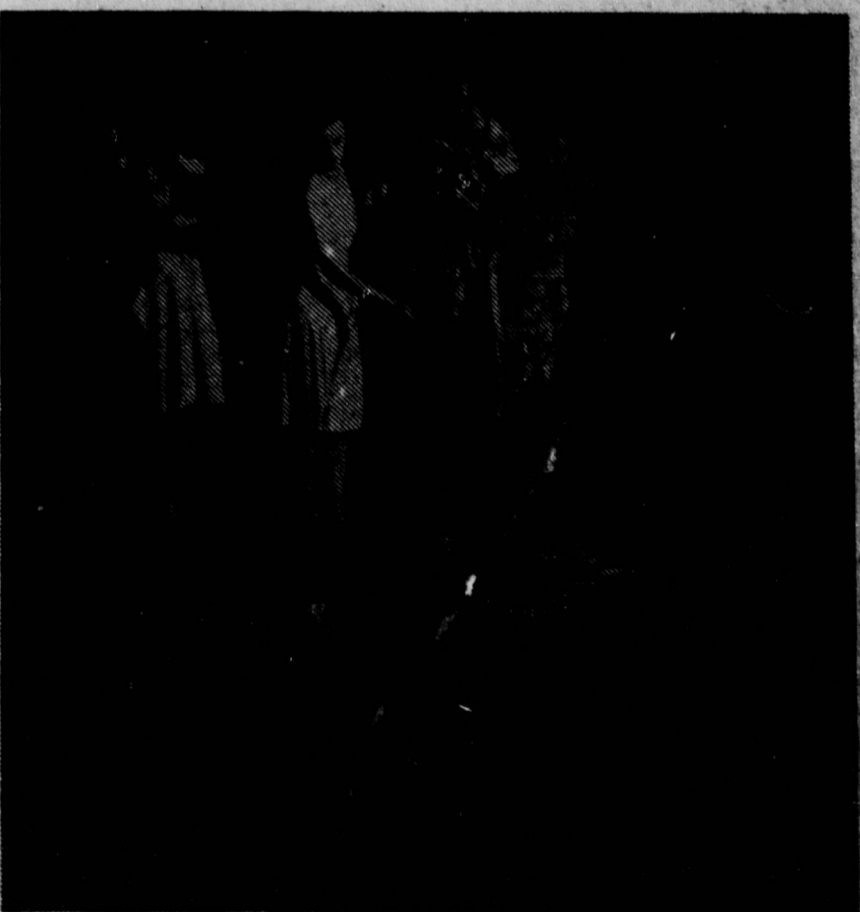
#### CONQUER CANCER! NOW!

#### READERS

The Erwin Cotton Mills wish to know more activities and happen... our friends in other... and other communities... effort to answer this need... are publishing this issue of... pages covering all plants... asking for our readers com... ents on this to guide the future... policy. Due to the paper short... age, it is necessary to keep this combined edition of THE CHAT... TER within eight pages. Those who may have submitted pictures and have not seen them published as yet, will be interested to know that cuts have been made and the news and pictures will be published as soon as space permits.

The Editor-in-Chief.

WORK SAFELY EVERY DAY!



COOLEEMEE SHUFFLE BOARD

Photo by Wrens

Pictured above is one of the two new Shuffle Board courts just completed at Cooleemee. These two courts are seeing plenty of action as this season proves. The young ladies playing are (left to right): Miss Thelma... Miss Catherine Jarvis, Miss Ida Foster, and Miss Margaret Wofford.

GUARD THOSE YOU LOVE— GIVE TO CONQUER CANCER!