

**GENERAL URGES ECONOMY**

ATLANTA, Ga. — Major General William Bryden, Commanding General, Fourth Service Command, recently inaugurated the Army for the Fourth Service Command program of economy by a letter to commanding officers of posts, camps and stations within the command, conveying his instructions that "Economy must prevail throughout this command."

General Bryden's letter stated, in part:

"Attention of all personnel in the Fourth Service Command is directed to the critical shortage in personnel and in materials. A reduction in funds is forecast.

"The tax burden imposed upon the people of the United States by this war enlarges imagination. In the Fourth Service Command, a loss, appropriated funds expended

or obligated from January 1, 1943, to October 1, 1943, amount to more than \$20,000,000. Each individual is, and will continue to be, affected personally by necessary military or economic conditions. Therefore, it is to each person's interest to practice economy.

"Economy must prevail throughout this command. The test for economy is the test for economy of funds, whether for employment of personnel or materials, will be: "Is this essential to winning the war?" No other standard will be used. The distinction between what is essential and what is desirable must be sharply drawn without compromise in any respect.

"Commanding officers without delay will forcefully present to all personnel under their command and supervise the need for economy."

In recent months, civilian personnel has been reduced by more than 5,000 and military personnel

**Disease Control For Chickens**

Colds and chicken pox are two of the diseases that commonly strike flocks during the fall and winter. U.S. Foultry Specialist at State College.

Control of colds depends to a great extent upon removing the cause before the disease has a chance to get started. The specialist advises to use the chicken house is free from parasites especially red mites, and that the birds themselves are free from lice. Remove the birds with advanced cases clean and disinfest the chicken house often, and give them

birds fresh water several times daily.

In feeding them, keep a well balanced dry mash before them at all times, and at noon, feed them a wet mash in amounts small enough that they will eat it all within half an hour. To wet the mash, use buttermilk, skim milk, whey or semi-skimmed milk. If milk is not available, wet the mash with water containing one pint of molasses to each gallon of water.

Add a teaspoonful of feeding oil that contains vitamins A and D to each quart of grain they are given. Always keep the litter dry and allow no strong drafts in the chicken house at night.

For the care of birds with chicken pox, vaccinate all between eight and twelve weeks of age. When the disease does break out in unvaccinated laying birds use pigeon pox vaccine for them.

**FOR ELECTRICAL WORK OF ALL KINDS**  
 Armatures, Motors and Transformers Repaired  
 —Appliances Repaired—  
 Prompt Service All Work Guaranteed  
 We Will Appreciate Your Business  
**Mill & Marine Electric, Inc**  
 REPAIR DEPARTMENT  
 419 W. Main Street Phone 500  
 Gastonia, N. C.

# DESTROYER-ESCORT BUILT IN 25 DAYS

## NEW WORLD'S RECORD IN SHIP CONSTRUCTION

*Beats World War I Destroyer Time of 45 1/2 Days — Bethlehem Set Both Marks*

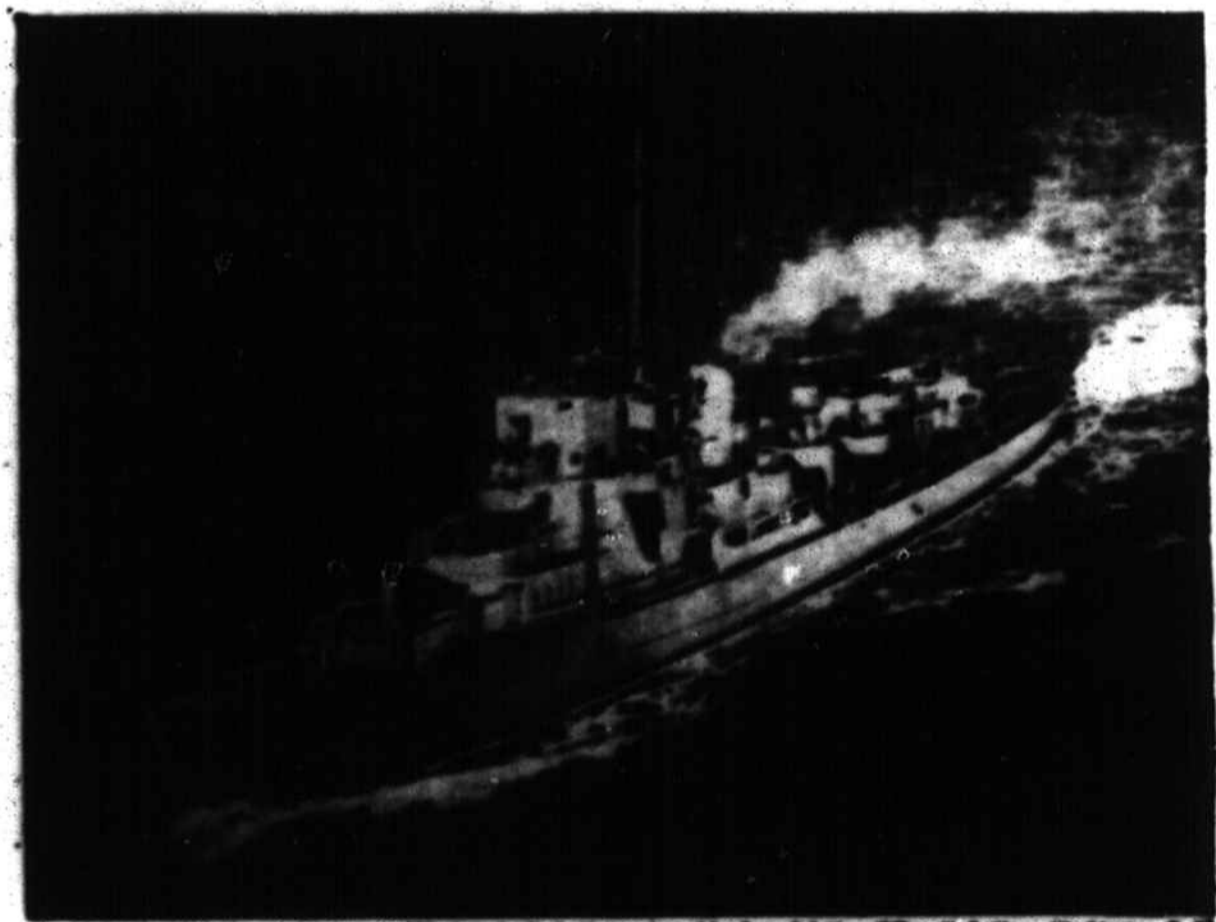
**Has Large Gun-Power for Both Offensive and Defensive Service; Equipped for Surface, Depth Bomb and Anti-Aircraft Combat**

Beating all prior records, the destroyer-escort *Reynolds* was completed and delivered Nov. 9 to the U. S. Navy, by the Bethlehem-Bligham Shipyard just 25 days after keel laying.

The *Reynolds* is a hard-hitting, fighting unit with great fire-power and speed, a bigger, more powerful ship than the destroyer *Raid*, which held the previous production record of being built in 45 1/2 days, during World War I. Bethlehem built both ships.

The *Reynolds* has terrific battle armament for surface, depth bomb, or anti-aircraft combat. Her main battery has guns mounted in three turrets which can revolve in a complete circle to follow a target, and can be fired by a trained crew with amazing accuracy and rapidity. Aft is a 40-mm. Bofors gun, each barrel capable of firing 120 rounds of 2-pound projectiles per minute. She has numerous 20-mm. Oerlikon machine guns with a potential fire-power of nearly 400 shells every 60 seconds. Also, along port and starboard rails aft of amidships are a flock of K-guns which can toss out the famous 300-pound "ash can" which make it unholy for any submarine within hundreds of yards.

The *Reynolds* is, in fact, one of these powerful, swift, sea-punchers



Destroyer-escort designed by U. S. Navy has wide range of fire-power and fast speed. The *Reynolds* was built by Bethlehem-Bligham Shipyard in record time of 25 days.

designed by the Navy to drive the Nazi subs from the Atlantic and protect American convoys. She can deliver a terrific curtain of fire effective at 2500 yards against air or surface targets. Like some of her sister ships, she is one of Uncle Sam's contributions to the British fleet.

The first group of ships in the destroyer-escort class were built in 302 days.

The next group in this class were built in 206 days.

Now the *Reynolds* has out the mark of 25 days.

And she is but one of hundreds of warships steaming out of the shipyards of America to speed the day of Victory.

**BETHELEHEM STEEL**  
 WORLD'S LARGEST SHIPBUILDER

