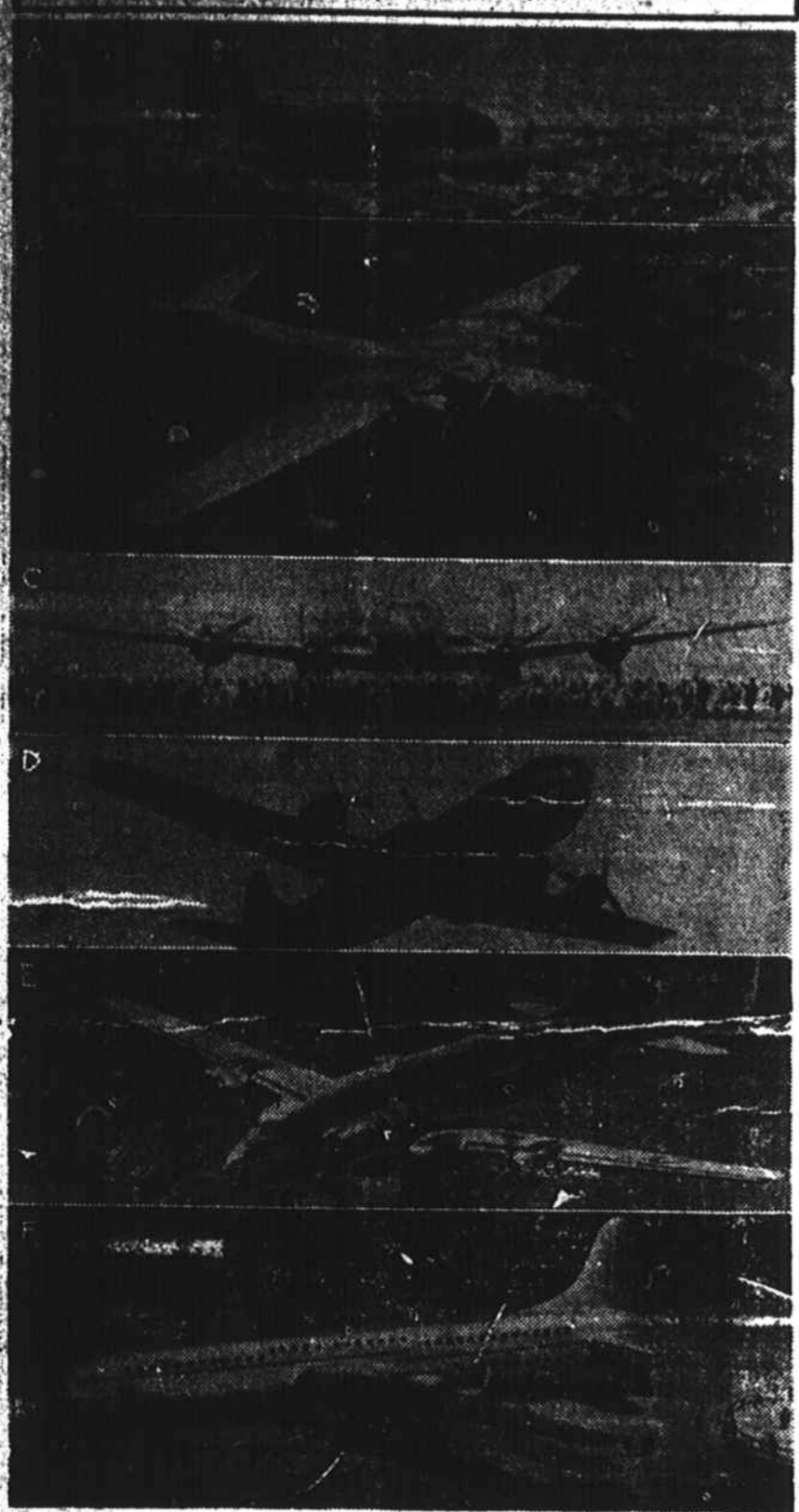


## PLANES YOU WILL FLY IN



**AIRLINES** are ready to swing into action with these models, most of them war tested, but brand new to civilian operations. a—Curtiss Commando (C46)—Largest twin-engine transport, gained war fame flying the "Hump." It will carry 36-45 passengers at 250 miles an hour. b—Martin Mars (JRM)—World's biggest flying boat. Cruising at over 200 miles an hour, it can carry 108 passengers with a payload of more than 14 tons for over 3000 miles. c—Lockheed Constellation (C69)—Giant war transport and holder of a transcontinental record, can carry 64 passengers or considerably more people than shown standing under its 123-ft. wing span. d—Boeing Stratocruiser (C97)—Crossed continent in just over 6 hours. This counterpart of the Superfortress will carry 90 passengers at 300 miles an hour. e—Douglas DC4 (C54)—Workhorse of war-time transport will be among first of newcomers to civilian use. Carries 40 passengers at 250 miles an hour. f—Consolidated Vultee "37"—Giant passenger plane is 12 times size of present twin-engine airliner and will cruise at 340 miles an hour.

## County Has Huge Home Repair Job

More than \$1,396,000 is expected to be spent during the next five years by Cleveland County home owners on remodeling and repair work.

The year 1946 promises to inaugurate one of the greatest eras in American history for home repairs and modernization, according to estimates released by the Tile Council of America. "Few developments will contribute more to employment and general prosperity in any community," according to R. E. Jordan, chairman of the Council's Residential Construction Committee.

Because of lack of materials and manpower during the war, majority of the county's 12,810 dwelling units are in need of home kind of repair or remodeling work. Kitchen improvements and modernization of bathrooms, installation of tiled showers and in some homes addition of a second bath top the nation's list of most wanted major improvements, Jordan said.

Outside paint jobs are needed on more than 50 per cent of homes, and addition of rooms and construction of porches also rank high in remodeling plans, according to the report. New roofing and heating plants are required by many dwellings.

Home owners in North Carolina will spend an estimated \$89,870,000 and those of the nation more than \$5,500,000,000 for major repairs alone in the next five years, according to

Jordan. Ample funds, at low interest charges, are available for such work through commercial banks, savings and loan associations, credit unions and mutual savings banks, he points out.

### HUGHES DISCHARGED

Sidney J. Hughes, boatswain's mate, first class, attached to the Naval Amphibious Base, Little Creek, Va., is being discharged after three years of service. His wife is the former Clara Belle Humphries of 100 Alexander st. Kings Mountain, N. C.

Prior to coming to Little Creek, Hughes served in South Atlantic waters 15 months aboard the USS CHRISTOPHER. Before entering the Navy he was engaged in farming.

Under normal conditions the railroads buy and use about 23 percent of all the bituminous coal mined in this country.

**Change of Location**  
**THOMASSON'S**  
**UPHOLSTERING**  
 Now At  
 214 Brice Street  
 (West of N. Piedmont  
 avenue)



**... TOPS FOR QUALITY**

Pepsi-Cola Company, Long Island City, N. Y.  
 PEPSI-COLA BOTTLING CO., OF CHARLOTTE, Inc.

**CULP TO BE DISCHARGED**  
 ON THE USS HOCKING, Chian, Nov. 11.—T-4 James H. Culp, Confederate St., Fort Mill, S. C., left here today aboard this attack transport with about 1,400 other servicemen to return to the United States to be discharged.

The passengers on the HOCKING, which is to arrive on the West Coast early in December, will go directly to separation centers nearest their homes for their releases.

**BEER TAX REPORT**  
 RALEIGH, Dec. 10.—Beer taxes yielded the state of North Carolina \$3,017,697.28 for the 11-month period ended November 30, according to the North Carolina Committee - United States Brewers Foundation.

November collections of \$358,833.45 pushed the total beyond the \$3,000,000 mark for the first time since beer was re-legalized in North Carolina in 1933. December collections are expected to add another \$300,000.

# Notice

## City License Tags

—FOR—

# 1946

## Are Now On Sale

All Kings Mountain automobile owners are required to buy and display new license plates on their cars by January 1, 1946. Get Yours Today.

## City of Kings Mountain

**QUEEN EN ROUTE HOME**  
 Pearl Harbor, T. H. — Cpl. Robert E. Queen, of Phenix Mill Store, Kings Mountain, N. C., is on his way home.

Queen is one of 1,100 high-point Army veterans whom the "Magic Carpet" is bringing back to the States aboard the USS TRIPOLE.

The USS TRIPOLE — one of more than 250 carriers, battleships, cruisers, and attack transports in the Navy's famed "Magic Carpet" fleet —

left Pearl Harbor, Thursday, Nov. 29 and is scheduled to arrive in San Pedro about Wednesday, Dec. 5.

Passengers will go directly to the Separation Centers nearest their homes to complete the formalities of obtaining their discharges before returning to civilian life.

**TESSNEE COMING HOME**  
 Pearl Harbor, T. H.—Calvin C. Tessnee, Sic, USNR, husband of Mrs. Edna M. Tessnee, of Kings Mountain, N. C., is on his way home.

Tessnee is one of 1,159 high point Navy veterans whom the "Magic Carpet" is bringing back to the States aboard the USS RUDYARD BAY.

The USS RUDYARD BAY — one of more than 250 carriers, battleships, cruisers, and attack transports in the Navy's famed "Magic Carpet" fleet — left Guam, Nov. 21, and is scheduled to arrive in San Francisco about Dec. 5.

Passengers will go directly to the Separation Centers nearest their homes to complete the formalities of obtaining their discharges before returning to civilian life.

**WALL LEAVES CHINA**  
 ON THE USS HOCKING, Chian. —Nov 11.—S-Sgt. Dewey C. Wall, 307 Wallice st., Kings Mountain, N. C., left here today aboard this attack transport with about 1,400 other servicemen to return to the United States to be discharged.

The passengers on the HOCKING, which is to arrive on the West Coast early in December, will go directly to separation centers nearest their homes for their releases.

**DINE WITH US**

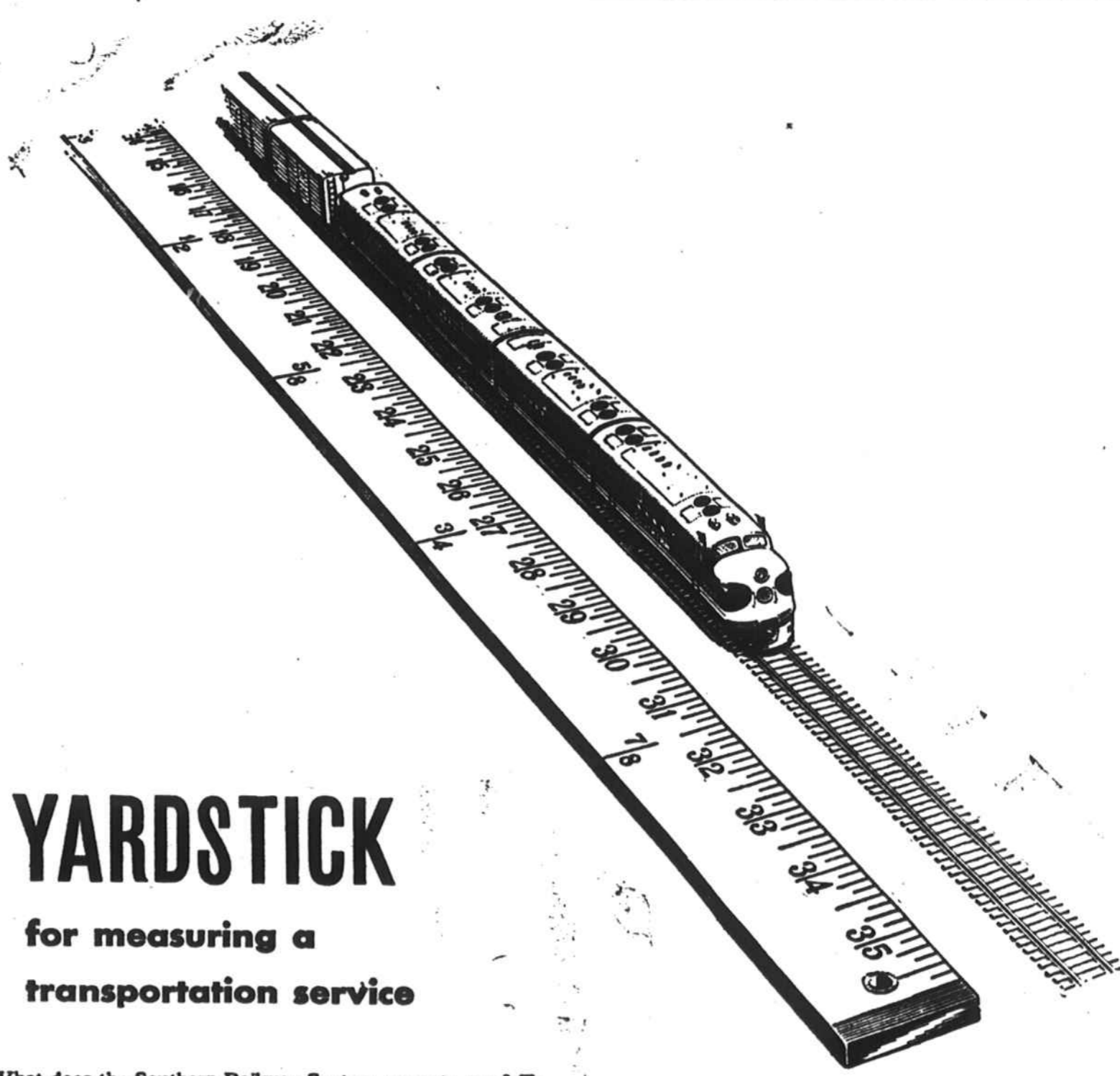
For dinner, or a snack.

We serve the best.

**OPEN ALL NIGHT.**

## The Waffle Shop

"Best Coffee in Town"



# YARDSTICK

for measuring a transportation service

What does the Southern Railway System mean to you? To your community? To the Southland? Is there any way to measure the value of its service? Perhaps these questions will help provide a "yardstick"...

- Does the Southern handle all kinds of freight... and passengers, mail and express, too?
- Does it provide safe, dependable transportation, all year 'round, in any kind of weather?
- Does it buy large quantities of supplies and materials in the South?
- Does it give steady employment to large numbers of Southern men and women?

- Does it pay taxes which help to support your schools, police and fire departments, and other local governmental services?
- Does it constantly and vigorously promote the growth of the territory it serves?

Yes, the Southern Railway does all of these things! Thus, with this "yardstick" you may measure how well the Southern "Serves the South"... and how much this railway means to you, to your community, and to the future growth and prosperity of the greater, better Southland.

Ernest S. Norris  
 President



# SOUTHERN RAILWAY SYSTEM



**DRINK MILK FOR HEALTH**

Keep fit, by drinking delicious, health-giving **SUNRISE** Grade "A" Milk. Pasteurized for purity.

**SUNRISE DAIRY**

Phone 1468