



"There's lots more to tell you... but someone else may want to use the PARTY LINE"

It's thoughtfulness like this that makes your party line neighbors thoughtful of you. It allows others to call and frees the line for incoming calls.

MANY of our customers desire different types of service which are not generally available now—such as individual line or two-party line service. We have a record of all such applications and we're working hard to provide the cables and central office equipment necessary to furnish the desired service as soon as possible.

SOUTHERN BELL TELEPHONE AND TELEGRAPH COMPANY

Survey Shows Heavy Boll Weevil Attack

The boll weevil survey for the first week of July revealed that four out of five North Carolina cotton fields were infested heavily enough to warrant dusting, Walter M. Kulash, entomologist for the Agricultural Experiment Station, reports. The survey covered 20 southern and eastern counties.

The heaviest infestations were still being reported from Scotland, Hoke and Robeson counties. Hoke

had a 64 percent infestation last week; Robeson, 55 percent and Scotland 61 percent. The survey showed infestations of 35 percent or more in Harnett, Northampton, and Sampson counties.

Kulash says the average square infestation for the 20 counties checked was 36.83 percent. Last year at the same time, only 2.27 percent of the squares had been punctured in the same counties. "In view of the present high infestations, dusting to control weevils is highly desirable," the entomologist concluded. "Many farmers are already carrying out this dusting program."

In a further report of general crop conditions, Kulash says that blooms have been reported in nearly all cotton-growing counties. However, only in scattered fields of the State's southern counties is cotton blooming extensively. Throughout the area around Kinston cotton is large, well-developed and generally in better condition than cotton in any other area.

Beggarweed, a plant heretofore looked upon as just a weed, has proved to be an excellent protein supplement in poultry feeding in experiments conducted by United States and Guatemalan scientists.

The state of Ohio has navigable waterways for 430 miles of the Ohio river, 230 miles of lake frontage and 100 miles on the Mkingum river. Manufacturing, mining and oil are among its chief interests.

Advertisement for A-H-PATTERSON AGENCY, featuring burglary insurance and contact information for C. E. Warlick, Manager.

Advertisement for McCarter's Cash Grocery, highlighting 'A Little Store With Big Bargains' and listing phone number 223.



NEWCOMER — Bobby Blake, sensation of "Swing King on Skates" and the ever popular Karen from a new and delightful combination in the all new Holiday On Ice coming to Charlotte for its annual seven day stay at the Memorial Stadium starting Sunday, July 17 at 9 p. m. and continuing nightly at 8:30 through Saturday July 25.

Holiday On Ice Show In Charlotte Sunday

"I believe one can do anything if he works hard enough at it." That is the credo voiced by Bobby Blake, whose flashing blades amazes America, in the all-new and greater edition of "Holiday On Ice of 1949," coming Sunday, July 17 to Memorial Stadium in Charlotte for seven days.

Bobby, whose real name is Robert Joseph Blake, is a dancer on skates, literally. Dancing, he says, is a job—and he works at it. Hours before each show, he's on the ice—and before that—he's on a floor, dancing. AAI of his astonishing routines are arranged and perfected on a dance floor before he dons the skates.

Bobby is one of the top sensations of "Holiday On Ice." He is a great favorite with his co-stars and members of the "Glamour-Icers," as the girls ensemble are called. He is ne-

ver "high hat" and he aids the younger and less experienced skaters in the company generously, coaching them in grace and poise and all the arts of skating. Bobby is a native of Philadelphia and is 25 years old. At the age of 16 he became a professional dancer and toured the country in many shows. In 1940 he saw his first ice skating show. He had never skated, but his success in adagio and arabic dancing gave him an idea. Why not put his dances on skates? and he did it! It took him a year skating 8 to 10 hours almost every day, to satisfy himself with his performance.

Blake was away from skates when he was in the army. After the war he immediately returned to the ice and regained his top-starring spot. However, in 1946, he lost nine months as a result of a fall, and the medics were dubious about his return to skates. The fall forced the removal of some cartilage. But Bobby came back by hard practice.

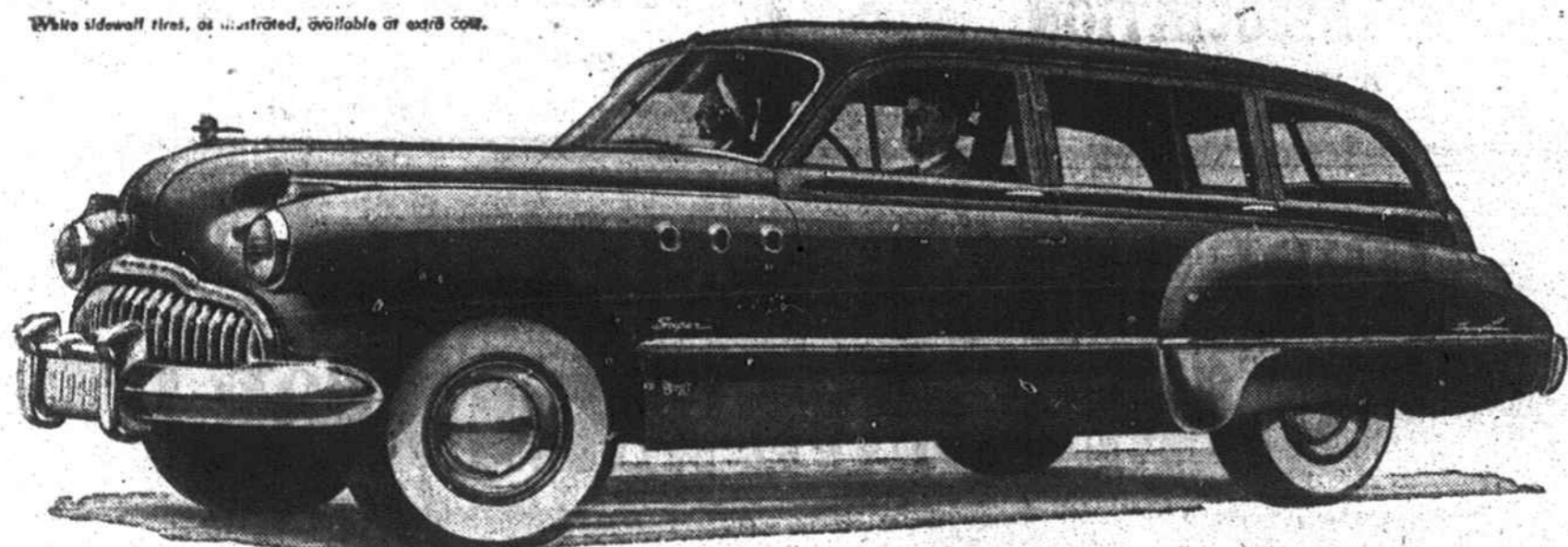
In the greater 1949 "Holiday On Ice," Bobby Blake will perform all of the routines he is now famous for, plus some astounding innovations he has just perfected. He'll be featured in the beautiful waltz spectacle, will co-star with the lovely Karen in a spritely, zingy, creation called "Hot Scotch," and it's a positive cinch that Bobby's winning smile and lithe rhythm skating in his sensation solo, "Icedom's King of Swing," will bring thunderous recognition from the audience and squeals of delight from the bobby-sox brigade.

Reserved seats may be purchased now by Mail Orders to Holiday On Ice, 411 Liberty Life Building, Charlotte, N. C. Reserved seat prices are \$1.85, \$2.25, \$3.00. There will be 3,000 General Admission seats available each night at \$1.25 for adults, or 75c for children. All prices include tax.

NOTICE OF SALE By order of the Kings Mountain School Board at their regular meeting on June 20, 1949, the undersigned will sell for cash at public auction on the premises on Saturday, July 23, 1949, at 10:00 o'clock a. m. or within legal hours, the following property: The eight room, two story frame dwelling house located the rear of the West End School Building in the Town of Kings Mountain, N. C., and known at the J. R. Cline house. The purchaser will be required to move said building on or before August 15, 1949.

This the 21st day of June, 1949. B. S. Neill, Vice-Chairman. B. N. Barnes, Secretary June 24—July 15

White sidewall tires, as illustrated, available at extra cost.



For Friends — Roamers — Countrymen —

Quite literally, it's one car in a thousand—999 other cars take the road for every Estate Wagon Buick turns out.

But it's far more than something exclusive, as you'll soon see when one takes its place in your garage.

For those times, for instance, when house guests arrive — what smarter equipage could you send to the station, what greater comfort, what handier way to manage the luggage problem?

And when the Lord and Master yearns for a few days away from it all — what's handier than this nimble gadabout, that lets him fold down a back seat at nightfall and enjoy full-length double-bed sleeping space?

And that place in the country, calling for a car that can go just about everywhere, do just about everything...

That's when you'll go for the ruggedness of this beauty with its steel framing, steel top and springs of durable, service-free coiled steel. That's when you'll go for Dynaflow Drive! too — and the steady, even, fluid pull that takes furrowed fields, rough pastures and narrow back roads with equal, shift-free ease.

In all truth, this is a star of many roles. Smart and sleek, finished like an express cruiser, it's a standout for style in any parking line-up, a family favorite for its quick readiness to take on any transportation job.

It's a buy, too, like all Buicks—and your dealer is offering pleasantly prompt delivery. Why not see him today about the car that both literally and figuratively is one in a thousand?

†Standard on Roadmaster, optional at extra cost on Super models.



MORE CLEARLY THAN EVER "Buick's The Buy"

Photo by HENRY J. TAYLOR, ABC Network, every Monday evening.

Your Key to Greater Value

Dean Buick Company

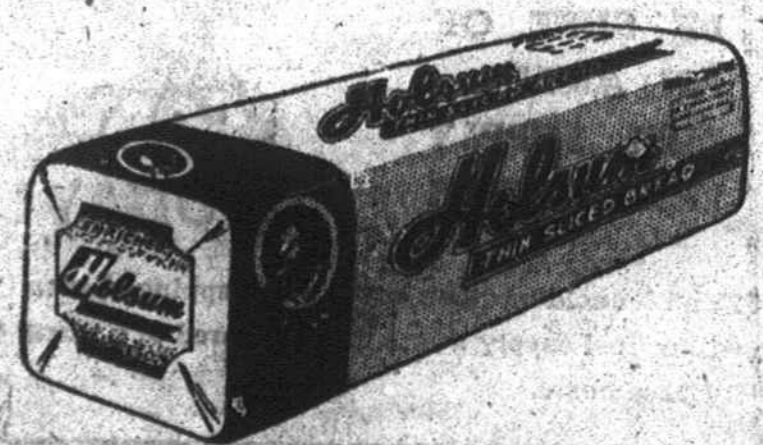
N. CHEROKEE ST. PHONE 330 KINGS MOUNTAIN, N. C.

When better automobiles are built BUICK will build them

SLICES OF LIFE



"What's the idea of ruining that loaf of HOLSUM Vitamin Enriched Bread by putting a file in it?"



BEST FOR SANDWICHES

Holsum BREAD