

PAGEANT SCENE—Shown above is a scene from the famous Wichita Mountain Easter Sunrise pageant service, "The Prince of Peace," which is scheduled to show at Gastonia Drive-In Theatre, located on the Gastonia highway, on September 14-18.

"Prince Of Peace" To Be Shown Here

"The Prince of Peace," motion picture filming of "The Lawton Story," including the famed Wichita Mountain Easter Pageant, is scheduled for the Gastonia Drive-In Theatre on September 14, 15, 16, 17 and 18, according to announcement by theatre officials.

A two-hour picture in cinecolor, the story is centered around the pageant "The Prince of Peace," annual Easter Sunrise Service started by Rev. A. Mark Wallock, Lawton, Oklahoma, minister.

The picture was filmed in 1948 and took around eight months to complete. Much of the shooting was done on location at Lawton. Rev. Wallock died in December, 1948, shortly after completion of the film. The picture stars Ginger Prince, as a Lawton choirgirl, and Millard Coody, a Lawton ex-GI and bank teller, as Jesus.

Admission for the picture will be 60 cents according to the announcement. Children under 12 will be admitted free of charge, it was stated.

The city of Omaha, Neb., is the country's fourth rail center.

On August 8 the Bureau of Agricultural Economics forecast a 1949 cotton crop of 14.8 million bales.

Grammar Grade Football Hopefuls Began Practice Grind On Monday

Some 176 boys from the sixth, seventh and eighth grades of East, West, Central and Park-Grace grammar schools turned out this week for initial football drills in the grammar grade athletic program. First game has been set for October 1.

The program, started by the Mountaineer Club, Kings Mountain athletic boosters organization, was made possible by donation of uniforms for the four teams by Mauney Mills, Neisler Mills, Victory Chevrolet Company, and Keeter's Department store.

A physical examination was given the group Tuesday afternoon at the high school gymnasium by three local doctors, Dr. W. L. Ramseur, Dr. P. G. Padgett, and P. E. Hendricks. Boys must be in good physical condition and must have permission of their parents in order to participate in the program activities.

Items of uniform purchased by the four business establishments include helmets, shoulder pads, jerseys, and pants. Initial plans were to use tennis shoes but a movement is on foot to purchase light-weight football shoes for the teams.

Each team will be cut to 22 players before the first game. Game plans call for a double header each playing night, with games on Saturdays in order to give more people a chance to turnout. Length of games will be shortened and each program is expected to last around two hours.

Coaches for the teams include: West school—Bob Neill and Pink Ware.

Central school—Bill Harmon and Bob Huffstetler.

Park-Grace school—Red Fulker-son and Jim Gibson.

East school—(Not known Monday.)

The schedule as drawn up by Commissioner Dan Huffstetler is as follows:

- October 1
Park-Grace vs. Central.
East vs. West.
- October 8
Park-Grace vs. East.
Central vs. West.
- October 15
Park-Grace vs. West.
Central vs. East.
- October 22
West vs. East.
Central vs. Park-Grace.
- October 29
West vs. Central.
East vs. Park-Grace.
- November 5
East vs. Central.
West vs. Park-Grace.
- November 12 or 19
All-Star Game.

Dr. J. L. Allison has joined the staff of the North Carolina Agricultural Experiment Station to investigate diseases of pasture and forage crops.

Fire Danger Is Less At School

Rural youngsters returning to school this month may not appreciate it, but they have something special to be thankful for, County Agent Ben Jenkins of the State College Extension Service pointed out this week.

These children, according to Mr. Jenkins, will be several times safer from fire in school than in their own homes.

"If parents took the same precautions to prevent fire that are taken in our schools, thousands of children's lives could be saved every year," the county agent pointed out. He cited figures released by Fire Protection Institute, national fire safety organization, which show that more than 11,000 persons, many of them young children, lose their lives as a result of fire each year.

Conceding that not all schools have perfect fire prevention programs, the county agent declared that the average school is superior to the average home in fire precaution programs. He cited three specific factors:

1. Schools conduct regular fire drills which minimize panic in the event of a small fire which could create mass hysteria.
 2. From a fire safety viewpoint, schools are usually structurally superior to the average farm dwelling in that they have adequate exits.
 3. Schools are well stocked with dependable first aid equipment in the form of Underwriters' approved fire extinguishers.
- "Not every home can be built to be as fire-resistant as a school," the agent said, "but all parents can become more fire-conscious. They can conduct home fire drills and they can make sure that they have dependable Underwriters' approved equipment on every floor."

AMAZING!

Yes, it's really amazing how quickly and pleasantly Liquid Capudine eases headaches. You see, Capudine's pain-relieving ingredients are already dissolved—all ready to start bringing relief. Capudine contains four different ingredients which work together to quickly ease headaches and neuralgia. Get Liquid Capudine. Use as directed on label.

SANITARY BARBERING

FLOYD DOVER

W. B. Huskey

D. & H. BARBER SHOP

Mtn. St.—Next To Myers'

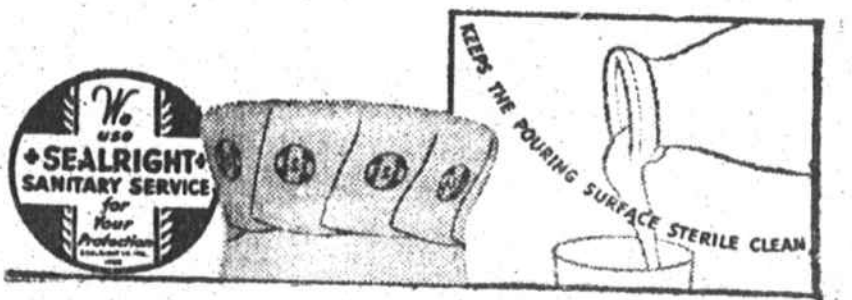
"Milk helps lovely Jane Frazee keep her figure and her vigor."

Says **ABDULLAH**
Trainer
REPUBLIC PICTURES CORPORATION

"You can't get glamour out of a make-up box alone," says Abdullah.

"I consider a quart of milk or more a day essential for anyone who wants to keep fit and trim. Milk is a real food without being fattening, and a good source of vitamins and minerals."

The milk we bring to your home is a precious food—and we do everything known to modern dairy science to protect its purity and wholesomeness. One of the extra safeguards we use is the Sealright Hood, which keeps the pouring surface of the bottle safe from contact with hands or other exposure between our dairy and you. The milk you pour out of one of our bottles is as pure as the milk that went into it!



Sunrise Dairy

GASTONIA, N. C.



Here are the reasons: the cost is low... no hidden charges... you can place your car insurance wherever you please... and you build bank credit for the future.

Arrange a bank auto loan now — be a cash buyer when your next car is delivered.

FIRST NATIONAL BANK

Member FDIC

How to Build Your Dream Home...

(1) Save Regularly

Savings accounts grow surprisingly when you save REGULARLY. We suggest our optional savings plan which pays interest at three percent compounded semi-annually. The first thing you know, you'll have the money to purchase your lot, or to make the down-payment on your new home.

(This Association also offers lump sum investors a savings-income plan. Full-paid stock is available from \$100 to \$5,000.)

(2) Build With a Home Loan

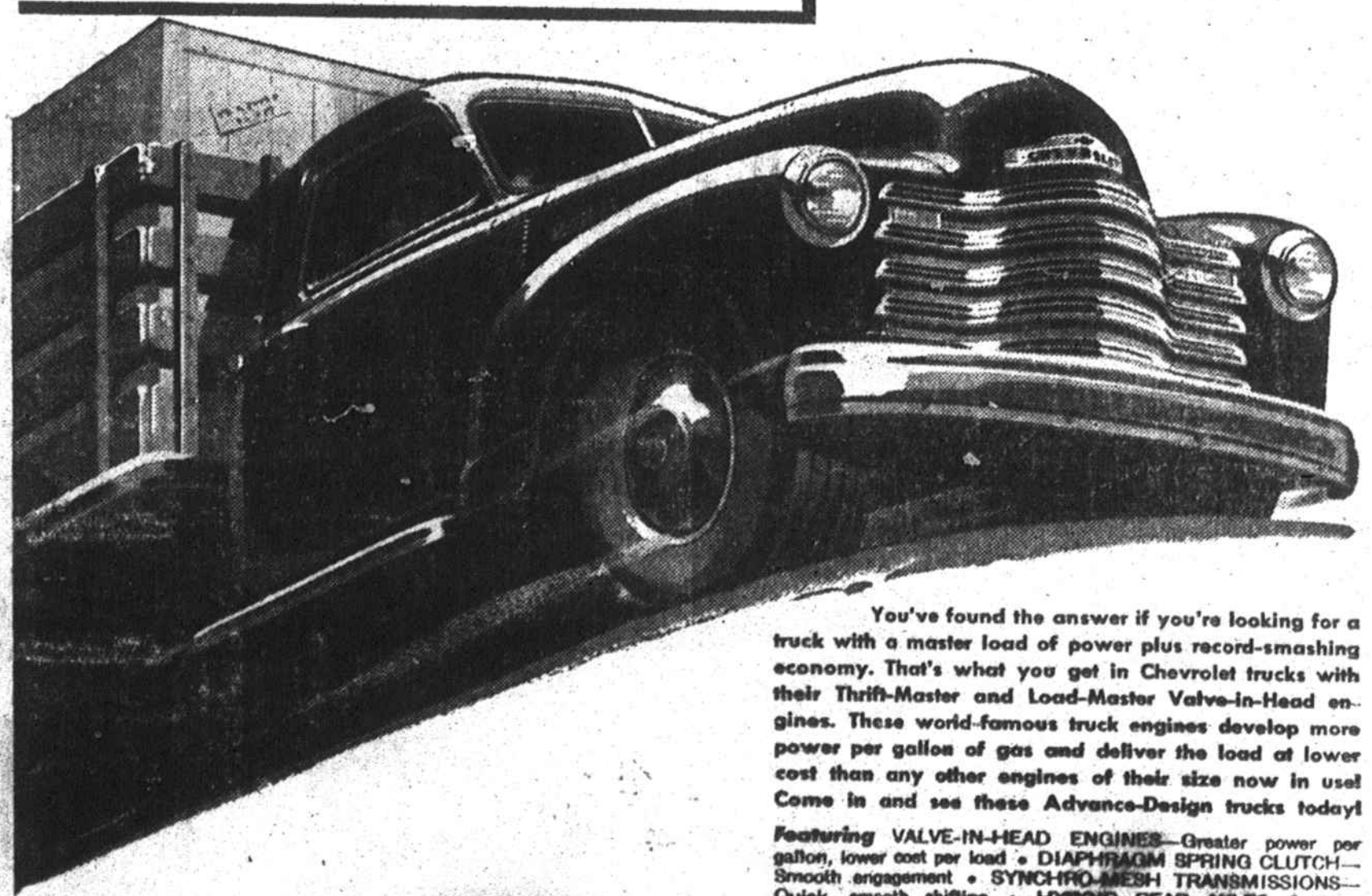
Build a home on a home loan repayable in convenient monthly payments on our direct reduction loan plan. Every payment (often no higher than rent) increases your equity in your home.

Come in today

HOME BUILDING & LOAN ASSOCIATION

A. H. Patterson, Sec.-Treas.

**Greater power per gallon
Lower cost per load**



ADVANCE-DESIGN TRUCKS

CHEVROLET

You've found the answer if you're looking for a truck with a master load of power plus record-smashing economy. That's what you get in Chevrolet trucks with their Thrift-Master and Load-Master Valve-in-Head engines. These world-famous truck engines develop more power per gallon of gas and deliver the load at lower cost than any other engines of their size now in use! Come in and see these Advance-Design trucks today!

Featuring VALVE-IN-HEAD ENGINES—Greater power per gallon, lower cost per load • DIAPHRAGM SPRING CLUTCH—Smooth engagement • SYNCHRO-MESH TRANSMISSIONS—Quick, smooth shifting • HYPOID REAR AXLES—5 times stronger than spiral bevel type • DOUBLE-ARTICULATED BRAKES—Complete driver control • WIDE-BASE WHEELS—Increased tire mileage • ADVANCE-DESIGN STYLING—With the cab that "Breathes" • BALL-TYPE STEERING—Easier handling • UNIT-DESIGN BODIES—Precision built.

PREFERRED BY MORE USERS THAN THE NEXT TWO MAKES COMBINED!

VICTORY CHEVROLET COMPANY