

**SOCIAL SECURITY NOTES**

By Notely Maddox

Employers and employees are paying for Old-Age and Survivors Insurance protection. It is similar to the better group insurance and retirement programs may large and progressive American businesses long ago established for their workers. Family security means better morale; better morale means better work.

Every 3 months each employer sends his Social Security taxes to the Collector of Internal Revenue. Half the taxes he forwards are his own; half are deductions from the wages of his workers. At the present time the employer and employee each contribute one percent. Beginning January 1, 1950, the employee will have 1 1-2 percent of his wages deducted each pay day and his employer will also contribute 1 1-2 percent.

For the months of October, November, and December each employer must file a Social Security Tax Return before February 1, 1950. With the taxes he has deducted from employees' wages, he sends to the Collector of Internal Revenue wage reports which must show (a) each employee's Social Security Account Number; (b) each employee's name; and (c) the amount of wages he paid such employee in that 3-month period. The wages so reported are credited by the Social Security Administration to each worker's individual wage account, just as a private insurance company credits insurance premiums paid. To pay these taxes without full and accurate reports is like paying a bill without properly identifying yourself.

This is a reminder to employers to make certain that the correct account numbers for all of your employees are available when you prepare your report. It is also a reminder to all employees to see that the employer has a record of your name and account number as they appear on your Social Security Card. If an employee has never had a Social Security Account Number or has had one and misplaced it, he or she may make applications at the Social Security Office in Gastonia located in the Post Office Building. Better still, upon request, employers can be supplied with this form for their employees' use.

For further information on Social Security Account Numbers and Old-Age and Survivors Insurance, you may see me on my next visit to Kings Mountain. I will be in Kings Mountain again on 12-21-49 at the City Hall at 10 a. m.

An increasing number of farmers and small woodland owners are finding Christmas trees a profitable cash crop, says the U. S. Department of Agriculture.

Christmas trees are ready for market at eight to 15 years of age, depending on the species, soil conditions, and the size desired.

Production of alfalfa hay has increased 50 per cent in the last 10 years.

**Letter To Editor**

Dear Editor:  
At the recent annual meeting of the Carolina Motor Club Board of Directors an important resolution was passed commending the press of the Carolinas for their constant promotion of traffic safety activities.

This resolution in a small manner helps to express our appreciation for the wonderful work being done by newspapers in the two states for the advancement of safety.

We are enclosing a copy of this resolution believing that it will be of interest to you.

We feel that with the aid of crusading newspapers great progress in pedestrian protection activities, driver training programs, and school safety work has been accomplished during the past year.

Thank you again for your great interest in vital life saving projects.  
Sincerely yours,  
Coleman W. Roberts, President

Alben W. Barkley is the fourth vice-President the state of Kentucky has furnished the nation. The others were Richard M. Johnson, John C. Breckinridge and Adlai E. Stevenson.

**Naturalized Citizen— That's Our Santa**

Santa Claus as Americans know him is a naturalized American citizen, and as such is America's contribution to the Christmas legend. That's the opinion of Dr. Gustav O. Arlt of the department of Germanic languages on the Los Angeles campus of the University of California.

"The Norwegians who settled early in America brought the first version of the modern Santa Claus, who in Europe had been known as St. Nicholas, but never adequately personally described," said Dr. Arlt.

"When the American Clement Moore described the jolly, rotund gentleman in minute detail in his poem 'Twas The Night Before Christmas," he assumed the proportion of living legend and thus became an integral part of Christian legend and folklore," the professor stated.

More farm people are killed in motor vehicle mishaps than any other class of accidents.



**SANTA CLAUS SAYS:**

**"Buy This For Men..."**

- Sporting Goods
- Men's Wear

at

**Woodward's**

**Gifts From Woodward's Are Sure To Please**

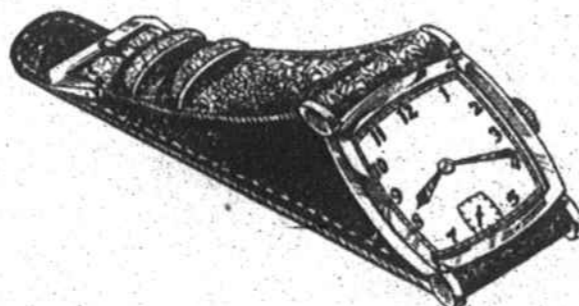
**Christmas SPECIALS**  
to you from  
**GRAYSON'S**



**Fine Watches**

Regularly \$29.95

—NOW—  
**\$22.50**



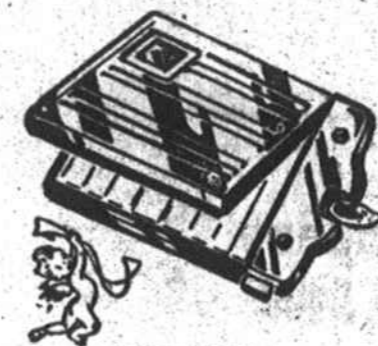
**Dresser SETS**

Regularly \$22.50

—Now—  
**\$18.50**

**BRACELET**  
—and—  
**EARRING SETS**  
Regularly \$4.95 and \$6.95  
**\$3.95**

**Sunbeam**  
**MIXMASTERS**  
**\$39.50**

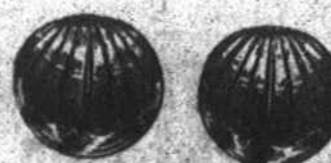


**Ronson Lighters**  
**\$6.00 up**

**Ronson Master Cases**  
Big Selection  
**\$10 up**



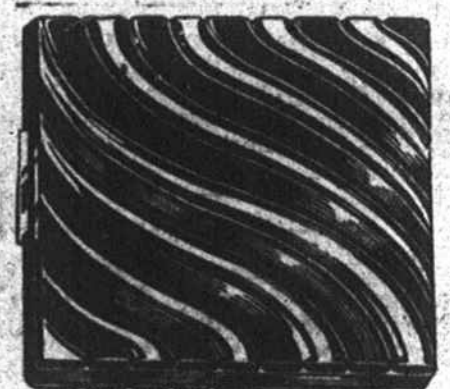
**Ladies' Brooches**  
Regularly \$4.95  
**Now—\$1.00**



**EARRINGS**  
Large Selection  
Gold-filled Earrings  
**\$2.95**

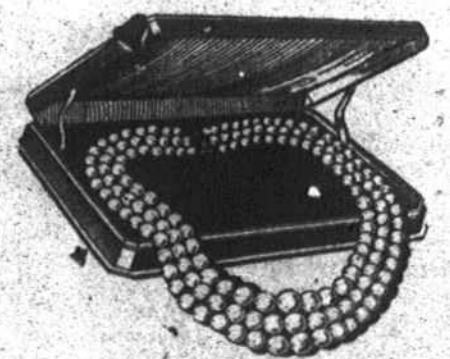
**\$1.50 per set**

**Crystal**  
8-Piece Sets, A Real Buy at only



**COMPACTS**

Regularly \$2.95, now  
**\$1.00**



**PEARLS**

**\$2.00 up**

**BUY NOW!**  
Pay After Christmas!

**GRAYSON'S JEWELRY**

**Christmas SALE!**



**Boudoir LAMPS**  
**Special**

**\$1.00**

**Belk's**  
Home of Better Values