

AN ORDINANCE AUTHORIZING \$9,000.00 SANITARY SEWER BONDS

BE IT ORDAINED by the Board of Commissioners (sometimes called the Board of City Commissioners) of the City of Kings Mountain:

Section 1. That, pursuant to The Municipal Finance Act, 1921, as amended, bonds of the City of Kings Mountain shall be issued in an aggregate principal amount not exceeding \$9,000.00 for the purpose of paying the cost of extensions of the sanitary sewer system of the City, including the cost to be reimbursed to the Crescent Hill Development Company and G. A. Bridges for certain extensions heretofore installed.

Section 2. That a tax sufficient to pay the principal and interest of said bonds shall be annually levied and collected.

Section 3. That a statement of the debt of the City has been filed with the Clerk and is open to public inspection.

Section 4. That this ordinance shall take effect thirty days after its first publication unless in the meantime a petition for its submission to the voters is filed under said Act and that in such event it shall take effect when approved by the voters of the City at an election as provided in said Act.

The foregoing ordinance was passed on the 14th day of December, 1949, and was first published on the 23rd day of December, 1949.

Any action or proceeding questioning the validity of said ordinance must be commenced within thirty days after its first publication.

S. A. CROUSE,

City Clerk and Treasurer.

d-23-30

AN ORDINANCE AUTHORIZING \$9,000.00 WATER BONDS

BE IT ORDAINED by the Board of Commissioners (sometimes called the Board of City Commissioners) of the City of Kings Mountain:

Section 1. That, pursuant to The Municipal Finance Act, 1921, as amended, bonds of the City of Kings Mountain shall be issued in an aggregate principal amount not exceeding \$9,000.00 for the purpose of paying the cost of extensions of the waterworks system of the City, including the cost to be reimbursed to the Crescent Hill Development Company for certain extensions heretofore installed.

Section 2. That a tax sufficient to pay the principal and interest of said bonds shall be annually levied and collected.

Section 3. That a statement of the debt of the City has been filed with the Clerk and is open to public inspection.

Section 4. That this ordinance shall take effect thirty days after its first publication unless in the meantime a petition for its submission to the voters is filed under said Act and that in such event it shall take effect when approved by the voters of the City at an election as provided in said Act.

The foregoing ordinance was passed on the 14th day of December, 1949, and was first published on the 23rd day of December, 1949.

Any action or proceeding questioning the validity of said ordinance must be commenced within thirty days after its first publication.

S. A. CROUSE,

City Clerk and Treasurer.

d-23-30.

PRESCRIPTION SERVICE

We Fill any Doctors' Prescriptions promptly and accurately at reasonable prices with the confidence of your physician.

Phones 41-81

Kings Mountain Drug Company
THE REXALL STORE
We Call For and Deliver

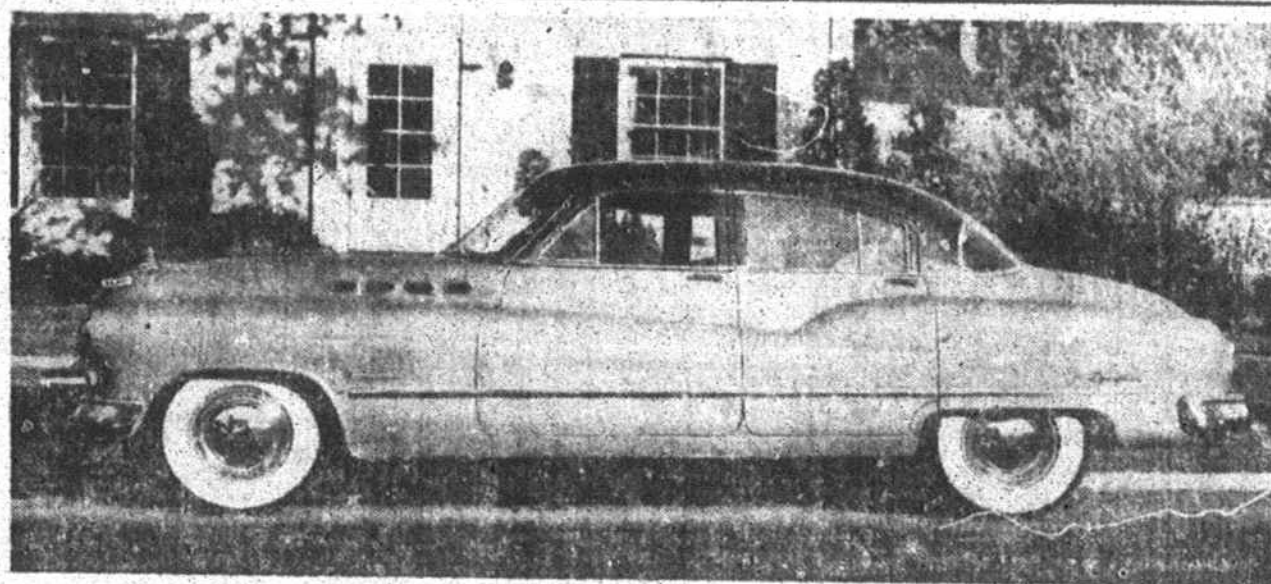


**HAPPY
NEW
YEAR!**

We wish for each of you, not only the start of a happy, prosperous New Year, but for a happy and prosperous New decade.

Sheriff and Mrs. Hugh A. Logan, Jr.

Buick Roadmaster for 1950



Tops in the Buick line for 1950 is the stately Roadmaster six passenger sedan. Inches shorter than its predecessor the car has a more powerful engine, a completely new body and features a one-piece curved windshield. Note the full taper-through of the front fenders, the wrap-around bumpers, spacious trunk and the narrow rear quarter panel permitting the rear window to come well around to the side providing better rear vision for the driver.

Buick '50's To Be Available In 19 Models

FLINT, Mich., Dec. 28.—Buick today announced for 1950 its most comprehensive line of cars since the pre-war days, and for the first time offered models in a wide range from the newly-invented lower price field to luxury custom models in the upper brackets. The cars are completely new from styling and engineering standpoints, boasting more powerful engines, new and roomier bodies, greater comfort, and sweeping fender lines carried through the length of the body.

Altogether there are 19 models in the line with seven in the Special Series and six models each in the Super and Roadmaster Series. Basically the cars are on three different chassis but one model in both the Super and Roadmaster Series is an elongated chassis to accommodate a more spacious body.

A new engine is offered in the Super Series while the Roadmaster and Special engines have undergone changes to give increased performance.

Highlighting the style of the new

NOTICE OF SALE

Under and by virtue of the power of sale contained in a deed of trust given by T. Kenneth Green and wife, Rachel W. Green, on the 22nd day of July, 1949, now on record in the Register of Deeds Office for Cleveland County in book 351 at page 95 to the undersigned as trustee for the Kings Mountain Building and Loan Association to secure the indebtedness therein mentioned and default having been made in the payment of same and at the request of the Kings Mountain Building and Loan Association, I will sell for cash at the courthouse door in Shelby, Cleveland County, North Carolina, on Monday, January 9, 1950, at 10:00 o'clock A. M. or within legal hours, the following described real estate: Being lot number 3 in Block E of that certain subdivision known as Midpines, it being a subdivision of the Calvin Howell property located about two miles south of Kings Mountain, a map or said subdivision being duly recorded in the Office of the Register of Deeds for Cleveland County in book of plats No. 5 at page 15. There is reserved from the above described property that certain right of way for light and power purposes. Being the same land conveyed by H. R. Parton and wife, to T. Kenneth Green by deed dated 9th of July, 1949, as will appear on record.

This the 5th day of December, 1949.

B. S. Neill, Trustee.

J. R. Davis, Atty. d-9-30.

cars are lower lines, the use of more glass and Buick's characteristic full taper-through front fenders flowing in smooth lines through the entire body length. These lines are accentuated in the medium and higher priced models by a stainless molding running most of the length of the car.

Two distinct body styles are utilized in the Special Series, the Jetback design, which are available in the four-door six passenger sedans. The Jetbacks, and ultra-streamlined body with sweep back, is available on the two-door three-passenger coupe and the two-door six passenger sedan.

The Tourback styling, with its spacious trunk and generally roomier dimensions, is used in the four-door models in the Super and Roadmaster Series cars, and the two-door models are Jetback. In addition these series each will have a convertible, a Riviera and Estate Wagon.

The Special Series is being increased with introduction of deluxe models, the first time in the history of the Special that deluxe models have been offered.

Buick's exclusive Dynaflo transmission continues to be standard equipment on all Roadmaster models and optional in the Super and Special Series. Nearly 350,000 of these torque converter transmissions have been installed on Buick cars since Dynaflo was introduced in 1948, and during 1949 approximately 70 per cent of all Buicks were equipped with Dynaflo. Many refinements have been made on the device.

An outstanding feature of the entire line is adoption of the unique and widely-acclaimed front-end, first offered on the Special Series in August.

The compression ratio of all engines in the Roadmaster and Special Series with Dynaflo also has been increased to 7.2 to 1, with a corresponding increase in horsepower. Brake horsepower of the Special with Dynaflo now is 122 and on

the Roadmaster 152.

Several improvements have been made in the chassis of the new cars including additional frame strength, and reinforced side rails extending forward for a stronger mounting to accommodate the bumper grille combination.

The new bodies, widest and roomiest of the low-priced 'eights, have hip-width increases up to 13 inches in the rear seat of the Super Series four-door sedan. Riding comfort for rear seat passengers has been improved with relocation of the seat to a point further ahead of the rear axle, permitting more head room in the Tourback models and the lowering of the rear roof lines on all models.

The instrument panel has been redesigned to place all dials and gauges more directly in front of the driver. The large speedometer is located above the steering column and keynotes the new design. The ignition lock and windshield wiper control are to the right and left of the steering column, just below the cluster of gauges, and the horn ring on the steering wheel, formerly a semi-circle, has been increased to a full circle.

An important addition to the instrument panel is the installation of dual map lights. Located just underneath the radio controls, they serve to illuminate the controls and the light is focused downward from a rectangular-shaped lens.

Headlights, parking lights, instrument and map lights all are controlled from a single four-way switch.

Fore and aft flash-way signal lights are standard equipment on the Super and Roadmaster Series and optional on the Special. The front signals are housed in the bumper guards and the rear signals are in the upper section of the rear reflector.

Approximately 75 percent of the trade of El Salvador is with the United States.



Take time out. Refresh yourself with a frosty bottle of delicious, energizing CHEERWINE! Serve CHEERWINE at home. Great for you. Great for the kiddies.

Cheerwine is in tune with the American taste



Keep a supply at home. Buy a 6-bottle carton or a case today!

**ON ALL OCCASIONS
CHEERWINE IS GOOD TASTE**

Typewriter Ribbons—Phones 167 or 283

EYES EXAMINED GLASSES FITTED
DR. D. M. MORRISON
OPTOMETRIST
Will Be In
Kings Mt., N. C., Office On Each Tuesday and Friday Afternoons
Hours 1 to 5 P. M. Located in Morrison Building
Kings Mountain Telephone 316-J
Will Be In
Shelby, N. C., Monday, Wednesday and Saturday
8 A. M. to 5 P. M.
Tuesday and Friday 8 A. M. to 12 Noon
Office Royster Building—Telephone 827-J
Shelby, N. C.

Give her **ORCHIDS**

TO GREET THE NEW YEAR

Orchids—lovely, flawless orchids—will help make the New Year's Eve celebration a never-to-be-forgotten occasion.

Freshly cut from the fingers of the world's largest growers, full-size, mauve orchids at a special low price. Also a few rare and exclusive hybrid orchids at prices slightly higher.

\$3.75 up each

See sample blooms. Order yours now.

ALLEN'S FLOWER SHOP

Phone 361—Night 451-W-1
We Deliver

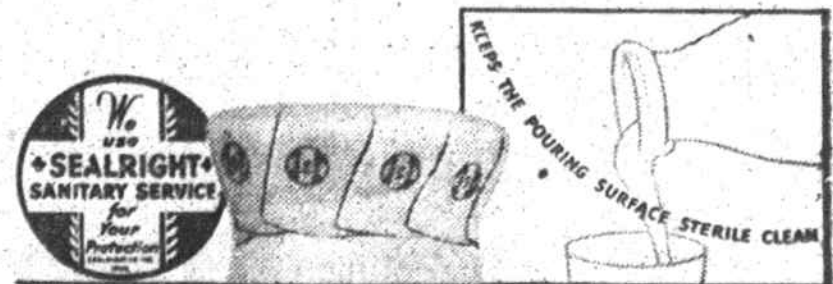
"Milk helps lovely Jane Frazee keep her figure and her vigor."

Says **ABDULLAH**
Trainer
REPUBLIC PICTURES CORPORATION

"You can't get glamour out of a make-up box alone," says Abdullah.

"I consider a quart of milk or more a day essential for anyone who wants to keep fit and trim. Milk is a real food without being fattening, and a good source of vitamins and minerals."

The milk we bring to your home is a precious food—and we do everything known to modern dairy science to protect its purity and wholesomeness. One of the extra safeguards we use is the Sealright Hood, which keeps the pouring surface of the bottle safe from contact with hands or other exposure between our dairy and you. The milk you pour out of one of our bottles is as pure as the milk that went into it!



Sunrise Dairy

GASTONIA, N. C.