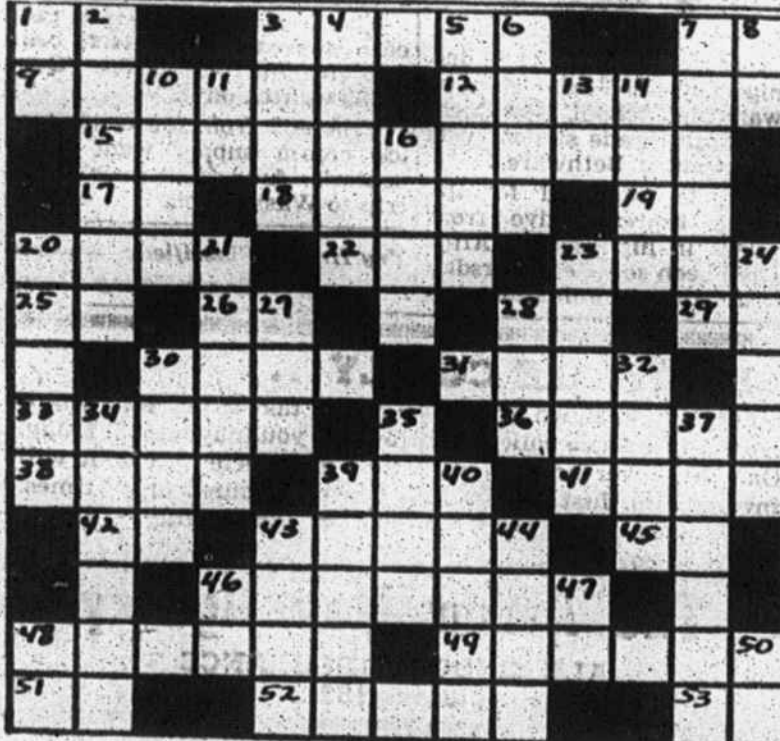


CROSSWORD By A. C. Gordon



Here and There

- ACROSS**
- 1—Like
 - 3—Metal fasteners
 - 7—Roman 900
 - 9—Presiding official
 - 12—Biblical prophet
 - 15—Upbeat
 - 17—Greek letter
 - 18—Hurl
 - 19—In equal degree
 - 20—To unite
 - 22—Nautical propelling implement
 - 23—Insects
 - 25—East
 - 26—Either
 - 28—Sea-going vessel (abbrev.)
 - 29—Thus
 - 30—Regrets
 - 31—Tolerable
 - 33—Performs with a horn
 - 36—Fruit
 - 38—Girdle
- DOWN**
- 1—Part of verb "to be"
 - 2—Specimen
 - 3—Tendency
 - 4—Combining form meaning right or correct
 - 5—Singing voice
 - 6—Kind of salad
 - 7—Containers
 - 8—Feminine parent
 - 10—To proceed nautically
 - 11—Musical note
 - 13—Preposition
 - 14—To examine point by point
 - 16—Periods of time
 - 20—Encourages
 - 21—Immaturity
 - 23—Item of value
 - 24—Free from flaw
 - 27—The thing, in law
 - 28—The sun
 - 30—A flower
 - 32—Foreboding
 - 34—Propels a water vessel
 - 35—Lacerated
 - 37—A surge onward
 - 39—Residence of an ecclesiastic
 - 40—Demeanors
 - 43—An essential in brewing
 - 44—Great Lake
 - 46—Musical note
 - 47—Shortened science
 - 48—A coastline (abbrev.)
 - 50—Toward

"Lost Colony" To End Run On August 31

MANTEO, N. C.—Paul Green's symphonic drama, "The Lost Colony", now being shown for its 12th season at Waterdale Theatre here on Roanoke Island will present its final performance for the year on Sunday night, August 31. Until that time there will be performances every night except Monday, August 25.

The drama this year has attracted patrons from every state and many foreign countries. The drama has also attracted several hundreds of North Carolina history students who were given complimentary passes to the show.

More than 1,500 4-H Club members have attended the show this year. They came from counties throughout the State.

Many of the persons seeing the show this season had witnessed performances during previous years. One new scene, an Indian attack on Fort Raleigh, has added much to the second act and won the acclaim of all who have seen it. During this exciting scene, through clever work of technicians, the fort in which the colonists have taken refuge is set a fire. The scene is also a turning point in the drama's love interest, as Eleanor Dare's husband Captain Ananias Dare is slain by the Indians and from there on out his widow and John Borden lead the group of colonists until they march away into the wilderness at the drama's finale.

By the end of the current season more than 600,000 persons will have seen "The Lost Colony." The drama's premiere was on July 4, 1937. It was not shown during four war years. It is now the world's longest-lived outdoor drama and it tells the story in pantomime, dance, song and the spoken word of Sir Walter Raleigh's ill-fated attempts to establish a colony in the New World that became America, and of an unsolved history mystery.

Grains Seeded Now Provide Fall Grazing

Small grains seeded now will provide fall and winter grazing for animals, Dr. G. K. Middleton, small grain breeder for the N. C. Agricultural Experiment Station, tells feed-short Tar Heel livestock farmers.

One of the best of the small grain crops is rye, which will give more pasturage than any other small grain, particularly on sandy soils. Middleton advises immediate seeding of Abruzzi or Balbo ryes in order to obtain maximum grazing.

Rye can be seeded alone at the rate of six pecks per acre, or in combination with 15 pounds of crimson clover. If the cattleman desires to add 15 pounds of ryegrass, the amount of rye should be reduced to four pecks.

Ryegrass provides good turf, but it becomes a pest when seeded on land in which small grain occurs regularly in the rotation.

Barley is another small grain that dairymen in the Piedmont and mountains may prefer to seed. Two and one-half to three bushels, with or without crimson clover, is recommended. The addition of ryegrass should reduce the amount of barley to two bushels.

Oats produce less grazing in the fall and winter than does rye or barley and are susceptible to blight disease. Early seeding of wheat is not advised because of a serious influx of Hessian fly. Some 400 to 500 pounds of an 8-8-8 fertilizer should be drilled in with any of the grains seeded.

Thompson Returns To Korean Duty

WITH THE 25TH INFANTRY DIV. IN KOREA — Cpl. Alfred W. Thompson, Jr., of 311 East Ga. Ave., Bessemer City, N. C., recently returned to the 25th Division in Korea after a five-day rest and recuperation leave in Japan.

He and hundreds of soldiers from other divisions in Korea, stayed in the finest hotels in Japan and enjoyed many luxuries unobtainable in Korea. The leaves are part of the Army's policy to give the fighting soldier a rest from the rigors of combat.

Thompson is a squad leader in company B, 14th Infantry Regiment, 25th Division.

North Carolina agriculturists are making studies to determine whether fertilization of forests is practical.

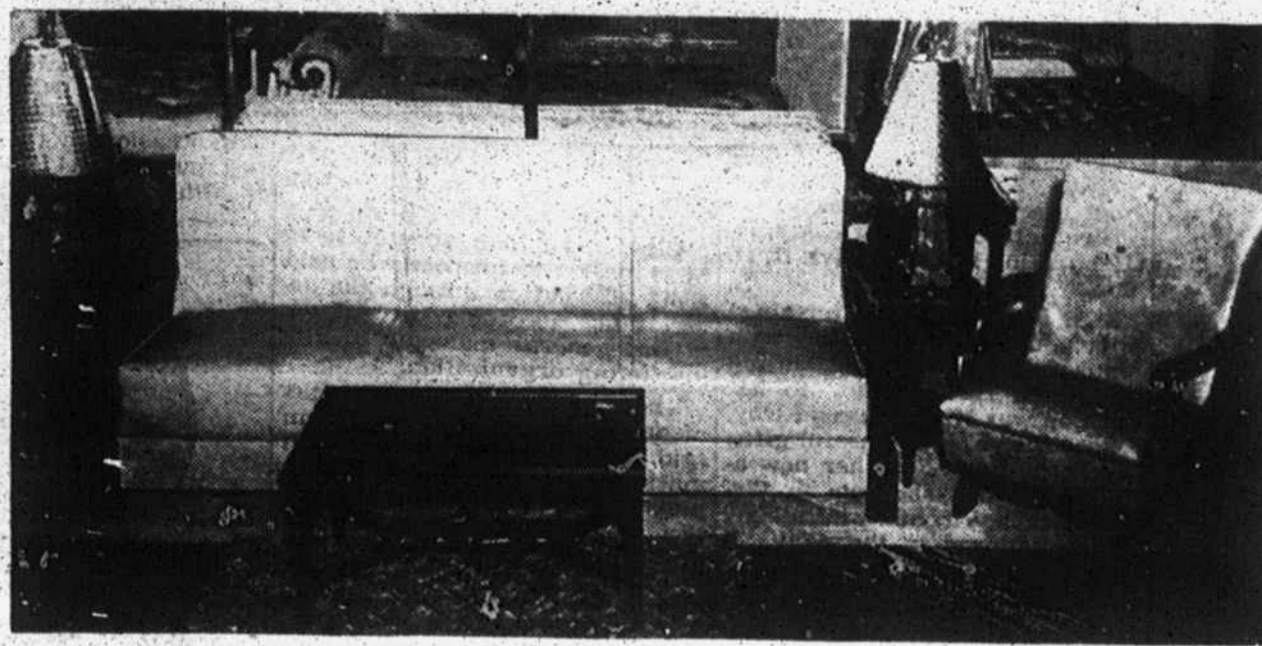
ADMINISTRATOR'S NOTICE
Having qualified as administrator for the estate of Denver Edward Gladden, deceased, this is to notify all persons having claims against said estate to file same with the undersigned on or before the 20th day of August, 1952, or this notice will be pleaded in bar of their recovery.

All persons indebted to said estate will please make immediate payment.

This the 13th day of August, 1952.
John W. Gladden,
Administrator.
8:14-9:4

Try Herald Classifieds — They Bring Results

OPPORTUNITY Knocks at Baird's



Sofa Bed & Matching Rocker!

You've not seen an opportunity for savings like this. This picture is of actual two-piece group made in our Show room.

Assorted colors to choose from in durable, washable plastic.

Sofa Bed and Platform Rocker Both For

\$79⁹⁵ Easy Terms!



Buy At Home Kings Mountain Merchants Association MEMBER 1952

\$89⁵⁰

Bed Plus handsome "Mr. & Mrs." Dresser

Modern Bedroom In Blonde or Mahogany

What a sensational bargain suite! What a sensational beauty, too! In beautiful satiny blond or mahogany and further accented by the "golden" new moon drawer pulls! And isn't that price dreamy, too? But this is a very practical suite. Made especially for today's smaller bedrooms, you'll find the two pieces take care of all your needs. Plenty of room in the headboard for books, magazines, a lamp; plenty of storage room in that 6-drawer double dresser!

OPPORTUNITY TO SAVE FRIDAY SATURDAY MONDAY

SEE BAIRD'S FOR OPPORTUNITY—FOR EASY, CONVENIENT TERMS

BAIRD FURNITURE

Compare Our Prices Before You Buy Anything For The Home

Phone 59

Farmer Raises Fine Swine Cheaply

Otis Crutchfield, Negro farmer of Person County, is gaining quite a reputation as a breeder of feeder pigs, according to C. J. Ford, Negro county agent.

In 1951 Crutchfield bred three sows, which farrowed 25 pigs in early 1952. Seventeen survived and were turned onto a three-quarter acre Ladino clover pasture.

When the pigs were six weeks old, Crutchfield sold 15 for \$118. Crutchfield's feed bill for supplement for the sows and litters was \$15.

The farmers who purchased

the 15 pigs are so well pleased with them that they have asked Crutchfield to supply them with pigs in 1953.

Crutchfield's pigs were farrowed where hogs had not been before and thus were not infested with worms, according to Ford. This contributed to their rapid growth.

In 1951, Crutchfield made enough money from his diversified farming activities to have his tobacco money clear, Ford says. Crutchfield has seven acres of tobacco allotment.

Sawdust and other wood wastes are useful for mulching or soil improvement with the addition of nitrogen.

CORRECTION

Price of an item in last weeks



advertisement listing the following in error at 4 packages for 25 cents, should have read

SPARKLE 3 Pkgs. Sherbert Mix 25c

The Herald regrets this error and is happy to make correction

NORTH CAROLINA UNLIMITED



MILK WITH A SOUTHERN ACCENT!

North Carolina farmers, already able tillers of the soil, now are livestock-conscious. In 20 years their herds of milk cows and calves have increased from 279,522 in 1930 to nearly 400,000. This means more and fresher milk for Tar Heels, plus increased farm income—all of which helps make North Carolina a better place to work, play and live.

Also contributing to the pleasant living that is North Carolina is the brewing industry's self-regulation program where brewers, wholesalers and retailers—in counties where malt beverage sales are permitted under state control—co-operate to maintain wholesome conditions for the legal sale of beer and ale.

North Carolina Division UNITED STATES BREWERS FOUNDATION, INC.



THE BEVERAGE OF MODERATION