



PLYMOUTH'S NEW LOOK FOR 1953—The distinctive grille of the 1953 Plymouth keynotes the new styling which carries through from bumper to bumper. The new models feature horizontal character lines that accentuate the ground hugging grace of the new streamlined styling. The softly rounded hood, sweeping out to the fenders, covers Plymouth's improved 100-horsepower engine with its 7.1 to 1 compression ratio. Note also the one-piece windshield with uniform curvature for minimum distortion and "Control Tower" visibility. It is available also in restful, heat-absorbing Solex tinted glass.

New 1953 Plymouth Goes On Display At Reynolds Motors Here Thursday

The 1953 Plymouth will be presented to the public on Thursday at Reynolds Motors showroom, 507 East King Street, owner Warren E. Reynolds announced today.

"Advanced engineering and styling make the new Plymouth more than ever before the outstanding car of the low-priced field," Mr. Reynolds said. The 1953 Plymouth is the most

completely new Plymouth to be presented to the public in the quarter-century since the original model rolled off the assembly line.

Plymouth Motor Corporation executives predict motorists will be delighted with the new, streamlined exterior, the luxuriously tailored harmonizing interiors, the increased horsepower and the scores of engineering innovations in the 1953 line which goes on display in dealers' showrooms November 20.

"This year Plymouth is introducing a new concept of automobile design in the low priced field," President John P. Mansfield declared in describing the 1953 models. "Superb styling is co-ordinated with radical engineering developments to produce the truly balanced car for easier, safer and more comfortable driving."

Height of the new Plymouth has been reduced for improved appearance. The 1953 model has more headroom, greater legroom and more hip and shoulder space than ever before.

The lively and dependable Plymouth engine has been given even greater power. For 1953 the horsepower has been increased to 97 and the compression ratio stepped up to 7.1 to 1.

"This car is a tribute to the engineers," Mansfield said. "They have succeeded in controlling to an unprecedented degree the three movements which have plagued designers since the first automobile was built—roll, pitch and bounce." Virtually gyroscopic stability with consequent easier handling of the car on turns has been achieved.

Easier riding, two-inch wide angle mounted rear springs absorb small road shocks and in combination with time-tested Oriflow shock absorbers complete the car's truly balanced suspension system.

There is sweep and grace in the styling of the new bodies. The 1953 Plymouth is lower and completely streamlined Chrome trim is integrated as part of the design to further enhance the long, low, wide appearance of the car.

Interior styling of the 1953 Plymouth is entirely new. Box type seat trim gives both front and rear seat backs a smart appearance. Upholstery, interior molding and trim are available in a wide variety of harmonizing hues to blend with the buyer's choice of exterior body colors.

Beauty and utility combine in the instrument grouping which occupies a long, horizontal island set into the instrument panel it-

Defendants Draw Jail Sentences

A sudden outburst at Judge Jack White in reorders court Monday afternoon added 30 days to the 4-months jail sentence of Bob Short. Short was found guilty on counts of assault with a deadly weapon, creating a public nuisance and contempt of court. The added charge was being under the influence of intoxicants while appearing before Monday's court session.

The defendant gave notice of appeal and bond was set at \$250. Bessie Short, wife of the defendant received sentence of 30 days imprisonment on charge of creating a public nuisance. On a second count, she was given a 30 day suspended sentence

self. A thoughtful touch is the center-mounted glove compartment, convenient to both driver and passenger.

Nine different body styles are offered in the two Plymouth lines for 1953. In the Cambridge line are the Four-Door Sedan, Two-Door Sedan, Business Coupe and the exciting and popular Suburban. The Cranbrook line this year includes the Savoy, a Four-Door Sedan, Club Coupe, Convertible Coupe and the dashing Belvedere Hardtop.

Ruggedness is added to the body structure by rear fenders that are integral this year with the quarter panels. Internal hinges of the deck lid are mounted at the extreme outward edges, resulting in easier access and more usable space. The 33.1 cubic foot trunk is almost 30 per cent larger than previous models.

Rear fender appearance is improved through relocation of the gasoline filler pipe at the left corner of the rear sill, which also provides for easier fueling.

For increased driving comfort and economy Plymouth automatic overdrive may be added to the famous synchro silent transmission at moderate extra cost. The overdrive increases fuel and oil economy, lengthens engine life, and as a highway cruising "fourth speed" gear, adds measurably to driving and riding comfort.

Moving the engine forward more than two inches gave more body room. Relocation of wheel housing gave more hip room.

The axle was moved closer to the front end of the rear spring, almost eliminating rear wheel hop when accelerating on uneven roads or in sand.

on charges of assault on Beulah Short, daughter of the defendant.

On the first charge, defendant gave notice of appeal and bond was set at \$100. Witnesses testified to the court in each of the several cases.

Marshall Wright, Negro, was given a 30 day suspended sentence when found guilty of assault on Edna Wright, wife of the defendant. Suspended sentence was granted upon conditions that he be of good behavior

for a 60 day period, pay a fine of \$20 and costs of court.

Eddie Greene was found not guilty on charges of assault on Earl Dean Dover, four-year-old son of Mrs. Martha Sue Dover. The alleged assault occurred Saturday, Pauline Green, witness for the defense testified to the court that she witnessed the alleged assault from the front door of the Greene apartment.

Ike Jamison, Negro, was given a 30 day suspended sentence on

charges of breaking and entering the premises of Geneva Wells Negress. Jamison paid a fine of \$10 and was taxed with the costs of court.

Two cases were continued until Monday's session: James Jamison, charged with assault with a deadly weapon, and Emma Spencer and Amanda Jamison, Negroes charged with illegal possession of non-taxed paid whiskey. Caplases were issued for Bill

Capps, charged with larceny and Arthur Harding, charged with damages to personal properties. Two persons were tried and found guilty of public drunkenness.

Credit is an important factor in achieving much-needed increases in farm production. Operation of a farm today calls for much greater capitalization than was true 50 years ago, or even 10 years ago.

Let's Go Hunting!

... with Remington "Express" and "Shur Shot" shells that give you . . .

- SMASHING POWER • LIGHTNING SPEED
- PERFECT GAME-GETTING PATTERNS

We have a fresh supply . . . so get your Remington shells now!

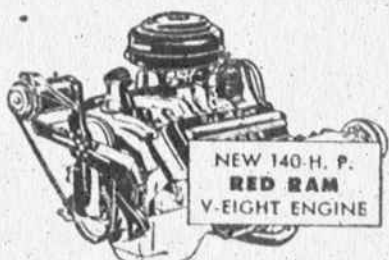


Remington
DU PONT

PHIFER HARDWARE CO.
Battleground Ave. Phone 46

ROAD TEST this Power Packed Beauty!

More speed than you'll ever need. Most efficient engine design in any American car. Packs more power per cubic inch . . . delivers power with less friction, less "heat waste."



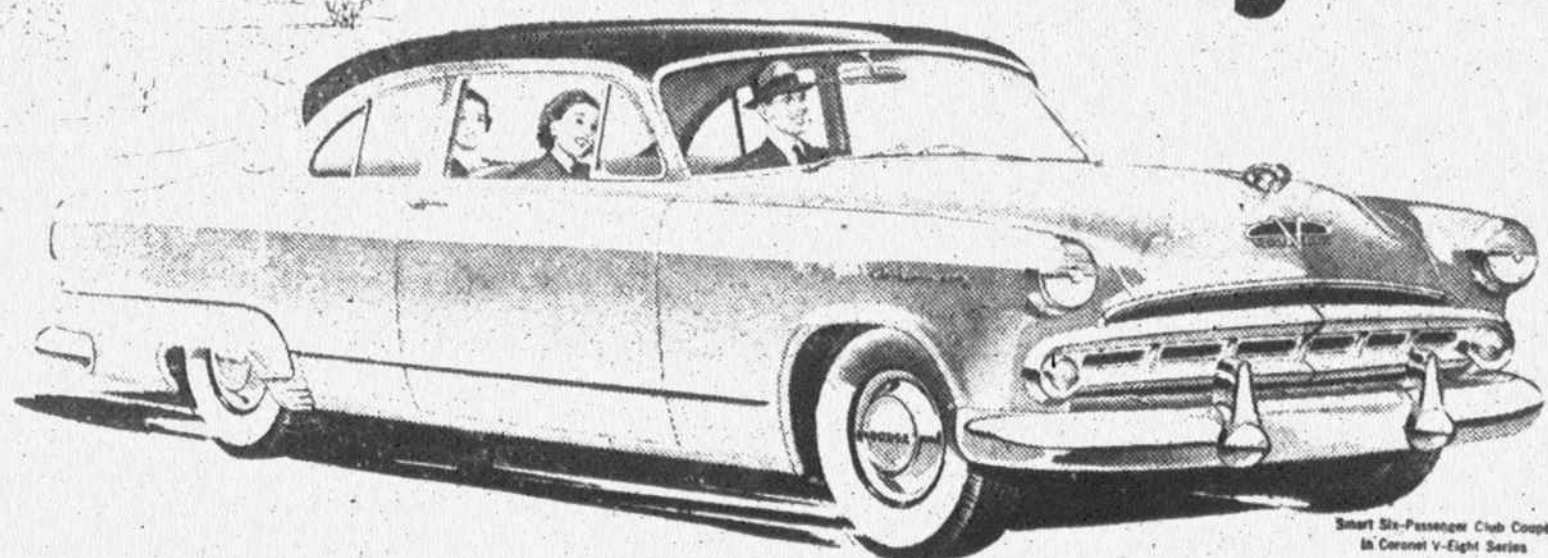
New road-hugging, curve-holding ride. New "stabilizer" suspension cuts side-sway, tames curves. You take to the highway with new confidence.

It's the Action Car for Active Americans

A Road Test Ride in the all-new Dodge will change your ideas about cars for years to come! You'll discover that a car can be big without being bulky; high-powered without being high priced; streamlined and clean-lined, yet "travel-planned" inside to bring you more "stretch-out" room, more comfort. Road Test a Dodge today at your friendly Dodge Dealer's.

Specifications and equipment subject to change without notice.

New-All New '53 Dodge



Smart Six-Passenger Club Coupe in Coronet V-8 Series

SCAT!

New Gyro-Torque Drive with a flash-action "Scat" gear. Newest, nimblest no-shift driving with added torque action that more than doubles starting power.

Widest Driving Choice

2 GREAT ENGINES
Red Ram V-Eight in the Coronet Series
"Get-Away" Six in the Meadowbrook Series

4 GREAT DRIVES

Gyro-Torque Drive*
Gyro-Matic Drive*
Standard with Overdrive*
Standard
*Optional at extra cost



EVERYTHING NEW...
AND LOWER-PRICED TOO!
Value up, prices down
new '53 Dodge!

REYNOLDS MOTORS • 507 E. King St.



B.F. Goodrich House of SANTA CLAUS GIFTS & TOYS FOR ALL

5-ROOM DOLL HOUSE

All steel with awnings, furniture



\$3.98

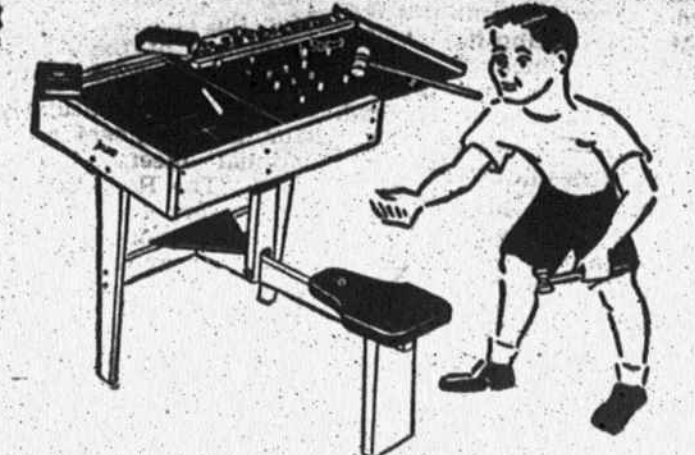
Hours of Glorious Fun

Colonial design, beautifully and realistically detailed—inside and out. Each room has appropriate furnishings—36 pieces in all. Detachable awnings.

Includes:

Dining-living room, kitchen, bath, nursery, master bedroom and 36 pieces of scale model furniture.

A Winning Combination!



Peg Board-Blackboard PLAY BENCH

\$4.39

- Sturdy 1" lumber
- Peg-board top with mallet
- Built-in slate board

You'll spare the dining room table—and he'll have more fun with his own youth-size play table and seat. Assorted color pegs. Chalk and eraser.

New Low-Priced Marx Train

\$3.98



Twin-Diesel WIND-UP SET

- Long-running, wind-up motor
- Track included

- Accurately designed
- Built-in governor, brake

Ready to Run!



Marx Electric Diesel Freight Train

Twin diesel locomotives—with headlight—plus three realistic freight cars—with thrill the youngsters! Transformer for reverse or forward. 12 track sections. Everything complete.

\$14.89

- Latest type diesels
- Complete outfit

- Box car, gondola, caboose
- High in value, economical

WALKS ALMOST LIKE REAL!



The Doll Sensation of the Year!
"SAUCY WALKER"

\$15.95

- Walks, sits, rolls her eyes
- 22 inches tall
- Nothing to wind

Cutest of 'em all. Walks backwards too. Mechanism enclosed—no mechanical failure. Lustrous Saran wig can be washed, combed, brushed. Dainty organdy dress is lace-trimmed.

IT RIDES and BUCKS \$12.95



ROY ROGERS
BUCKO-BRONCO

- Made of strong hardwood
- Holds up to 150 lbs.
- Shiny colorful finish
- Rubber-tired steel wheels
- Folds compactly for storage

Here's easy-to-handle Trigger on wheels to give all the thrills of real horse-back riding. He's got a steel bit in his mouth, too! Pedal bar is tough steel.

USE OUR LAY-A-WAY PLAN

City Auto & Home Supply

247 Battleground Ave.

Telephone 525-J

