



KINGS MOUNTAIN HIGH SCHOOL GIRLS CAGERS — Pictured above is the 1954 edition of the girls basketball team of Kings Mountain high school. Miss Elizabeth Collette is coaching the girls teams this season, her first with the Mountaineerettes. Pictured are, front left to right, Mary Owens, Billie Gibbons, Rachael Jolly, Nora Jane Deese, Pat Davis and Jane Ormand; second row, Butchie Houser, Jackie Arnette, Shirley Ware, Jerrrie McCarter, Nancy Bishop, Betty Prince, Gwendolyn Pearson and Derice Weir; and back, Joyce Dixon, Pat Freeman, Peggy Cline, Fern Barrett and Pat Owens, Donna Cheatham and Jean Arthur, managers. (Photo by Carlisle Studio.)

CENTRAL SEXTET DRILLING HARD FOR OPENER

With the coming test only a half-dozen practice dates away, Coach Elizabeth Collette faces a tough problem in working out a combination of forwards for the girls varsity basketball team but the guard positions appear solid.

Four letter winning guards from last year's squad are back on the '54 edition, including Jane Ormand and Pat Davis, seniors and Rachael Jolly and Shirley Ware, juniors.

Nora Jane Deese and Nancy Bishop are the only returning forwards. Both are short in stature but either could develop into a scoring threat before many games are played.

The six letter winners are included on the 18-player squad released by Coach Collette last week.

Other forwards on the squad are Derice Weir, Jerrrie McCarter and Billie Gibbons, sophomores, and Butchie Houser, Joyce Dixon, Peggy Cline and Fern Barrett, juniors.

Adding depth to the defensive forces are Senior Mary Owens, Gwendolyn Pearson, Pat Freeman and Betty Prince, juniors, and Sophomore Jackie Arnette.

Main scoring threats missing from the '53 edition are Shirley Falls, the club's leading scorer

last season, and Gertie Jenkins. Kings Mountain opens the season here on December 18 with Cool Springs high of Forest City furnishing the opposition. The twin bill is the only one slated in loop play prior to the Christmas holidays.

Alley Cats, Luckies Post Keg Victories

The Alley Cats and the Luckies posted wins in Kings Mountain Bowling league action at Shelby Center Monday night.

The scores:

GAMES OF DECEMBER 7	
Alley Cats (10-4)	Independents (5-9)
Howell 290	Carpenter 309
Ware 334	Houser 274
Morrison 284	Logan 270
Hammick 274	Falls 266
Arrowood 251	Brackett 262
SCORE 1425	SCORE 1401
High Line — Ware 121	(Carpenter 118).
High Set — Ware 324.	
Luckies (9-9)	Mountaineers (5-9)
Everhart 202	Kezziah 253
Biser 249	Tiggor 246
Jones 247	Clark 285
Kelly 254	Wright 270
Wilson 327	Gamble 284
SCORE 1349	SCORE 1348
High Line — Wilson 117.	
High Set — Wilson 327.	

Relatively little butter has been sold to the federal government under the price support program this fall, but cheese and dry milk sales have continued moderately large.

KINGS MOUNTAIN Hospital Log

VISITING HOURS
Daily, 10 to 11 a. m.
3 to 4 p. m. and 7 to 8 p. m.

PATIENT LIST AT NOON

WEDNESDAY:

Michael Howell, city, admitted Tuesday, November 17.
James Mark Howell, city, admitted Tuesday, November 17.
George Runyans, 3 Poplar st., city, admitted Saturday, November 28.
Margaret Turner, city, admitted Saturday, November 28.
Rosa Brackett, 318 North Piedmont ave., city, admitted Saturday, November 28.
Evelyn Reynolds, Gantt st., city, admitted Wednesday, December 2.
Marcus M. Falls, route 3, city, admitted Wednesday, December 2.
M. L. Beam, route 2, admitted Thursday.
Mrs. Annie Dellinger, route 3, city, admitted Thursday.
Bailey Falls, route 3, city, admitted Thursday.
C. D. Gladden, city, admitted Thursday.
Mary Ellis, city, admitted Friday.
Fred Thomasson, Jr., route 1, city, admitted Sunday.
H. S. Clemmer, S. Piedmont ave., city, admitted Monday.

Bethware Cagers Hosts To Grover Thursday Night

Grover and Bethware are set to tangle at the Bethware gym Thursday night in the first of the annual county cage series for the Number 4 Township schools. Game time is 7:15 p. m.

Coach Gene Turner's charges enter the big clash fresh from a pair of victories over Belwood on the Grover hardwood Tuesday night.

With both teams scoring an identical number of points, the Grover girls won 56-55 and the boys 56-53 in a night of nip-and-tuck cage action.

Sue Keeter, with 31 points, and Betty Watterson, with 19, paced the girls and Tommy Keeter had 25 and Donald Ellis 20 for the boys.

Bethware, meantime had an off night at Piedmont, the girls losing by 58-31 and the boys by 65-21. Laura Morris hit 20 for Bethware but Janice Spangler got 48 to pace the winners. Jake Dixon's 7 was high for the Bethware boys.

On Tuesday, Bethware is scheduled at Belwood and Fallston is at Grover.

Generally poor visibility. The two long holiday weekends will again increase driving exposure this year according to the Institute.

To be sure that you are not counted among this year's crop of Christmas fatalities, Don't.....

1. — drive any more than is necessary.
2. — drive on long trips if a train or bus or other transportation is convenient.
3. — drive home from parties after drinking.
4. — drive without lights when visibility is poor.
5. drive without chains when roads are iced or slippery.
6. — allow younger drivers to use the family car unless you are certain that they are responsible and experienced enough to meet the season's increased hazards.

Free Booklet Tells Need For Nitrogen

How important is nitrogen to the efficient production of forage crops? Every North Carolina livestock farmer needs the answer.

A complete explanation is given in the latest publication of the North Carolina Agricultural Experiment Station — "Nitrogen in Forage Production," Bulletin No. 383, by W. W. Woodhouse, Jr., and D. S. Chamblee, professors of agronomy at N. C. State College. The 24-page, illustrated booklet introduces the farmer to some basic facts about forage crops, both legumes and grasses.

Yule Holidays Most Dangerous Period On Road

BOSTON — You are 22 percent more likely to be injured in an auto accident during the ten-day period from December 24 through January 3 than at any other season of the year.

This figure is given by the American Mutual Liability Insurance Company's Institute for Safer Living, which predicts more than 1160 fatalities resulting from Christmas holiday season driving. This is 200 more auto deaths than during the eight-day holiday period last year.

Principal factors responsible for this seasonal increase will be bad weather conditions in many areas, increased holiday travel, increased social activity and leaving their name, address and type of work needed performed.

The recreation commission will get the information, secure a boy or boys and bring them to the home. Satisfaction will be guaranteed and the price will be set by the home owner and the recreation representative. "Start placing those calls, for Christmas is coming and a lot of these small fellows would like to earn that extra dollar in order to buy someone a gift," Director Layton urged.

RECREATION ROUND-UP

Organizational meeting of two boys basketball teams to be sponsored by the recreation commission are scheduled for Saturday morning at the high school gymnasium.

The "Midgets," boys under 110 pounds, are to meet at 9 a. m. Saturday and the "Mis-Fits," boys too big for the former team and 7th and 8th graders, are to go at 10:30 o'clock.

Prospective players must have tennis or basketball shoes or they will not be admitted to the gym. Only 15 players will be carried on each team.

Another program is also being arranged for outdoors court basketball games, facilities being inadequate for an indoor program, Director Red Layton said.

The recreation commission is starting an odd jobs employment bureau for youths in cooperation with the police department.

Persons desiring help to perform odd jobs around the house and yard are urged to telephone their request to the police desk.

Say Merry Christmas with... **Flowers**



FOR YOUR Christmas

Holiday greens and special-occasion flowers for a merrier Yuletide. To trim windows, doors and mantle, deck the table, greet your hostess. The brightest, most festive selection awaits your choice here.

Place Your Orders NOW

361 Phones 1154

Allen's Flower Shop
Member: Florists Telegraph Delivery Service
E. King Street

Pre-Christmas SALE SUITS·COATS



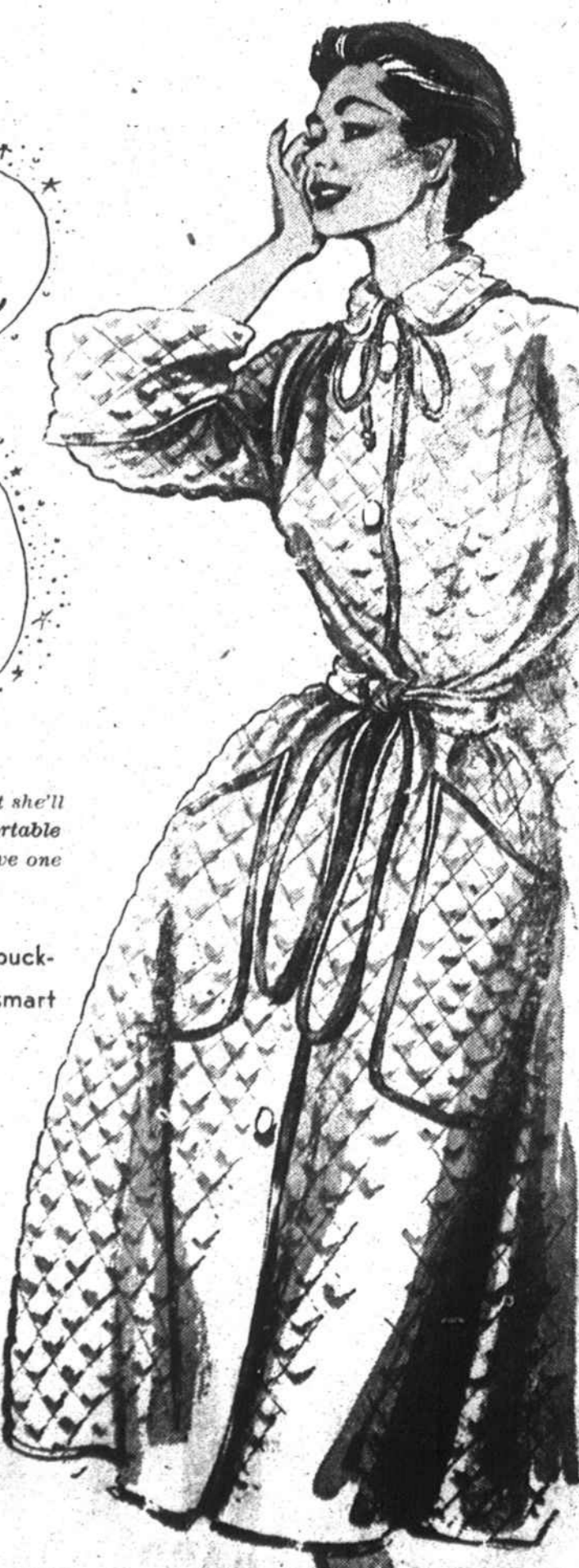
Nowhere Such Bargains!
\$50 CURLEE SUITS
Now **\$39.88**
\$39.95 CURLEE "WYDOWN"
Now **\$29.88**

\$45 Curlee Topcoats \$39.95	\$27.50 Curlee Sport Coats \$22.50	\$39.95 Curlee Topcoats \$34.95
--	--	---

ALL SALES CASH OR LAYAWAY ONLY!

KEETER'S

perfectly at home***



... Here's how to give a pretty present she'll use every eve after Christmas, a comfortable gift that offers glamour galore! She'd love one of our robes!

Smart dusters or full-length styles in puckered nylon, quilted taffetas, or smart seersucker.

Prices Begin At **\$3.95**
Others to **\$10.95**

— Second Floor —

Myers' Dress Shop