

### Mountaineers Lose To Hilltoppers 4-3 In Battle On Rutherford Field

Kings Mountain dropped another close South-Group, Western AA Conference battle on Wednesday, April 14 at Rutherfordton, this one by 4-3 to the Rutherfordton Spindale high Hilltoppers.

Righthander Earl Marlowe, still working with a sore arm, went all the way for the Mountaineers in a very creditable performance. He was touched for 19 hits, including two doubles and a triple, over the route but was in serious trouble only in the second inning when misplays hurt. He struck out the side in the frame after two runs had scored.

The losers otherwise played an outstanding game, defensively, leaving eight runners stranded and coming up with a double play and several fielding gems.

Marlowe was also the hitting star, getting the first hit off his opponent, Lefty Godfrey, to account for two runs in the fifth inning. The third Kings Mountain run came in the eighth. Don McCarter walked and swiped second. He advanced to third on a single by Milton Hope and scored

on a long fly by James Abernathy.

Godfrey was stingy with his offerings and limited the losers to three hits.

The Hilltoppers scored single runs in the fourth, when Henson tripled and stole home, and in the fifth, on a pair of doubles.

The game was originally scheduled for City Stadium on last Thursday, but was switched to the Rutherford County field at the request of Kings Mountain team officials.

The box score:

KINGS MOUNTAIN	AB	R	H	PO	A
Earl Marlowe, rf	4	0	0	0	0
George Harris, cf	4	0	0	0	0
Milton Hope, lb	4	0	1	10	0
James Abernathy, 3b	4	0	0	1	1
Bob Wilson, 1b	4	0	0	0	0
Charles Smith, 2b	4	1	1	1	4
Don McCarter, c	4	0	0	0	0
W. W. Marlowe, lf	4	0	0	0	0
Earl Marlowe, p	4	0	0	0	2
<b>TOTALS</b>	<b>31</b>	<b>1</b>	<b>2</b>	<b>24</b>	<b>12</b>

RUTHERFORDTON	AB	R	H	PO	A
Lefty Godfrey, 2b	4	0	0	0	0
Bill Bell, lb	4	0	1	8	0
Max Byrd, 3b	4	0	0	1	1
Junior Wagoner, cf	4	0	0	0	0
Charles Byrd, c	4	0	0	0	0
Hempill, ss	4	0	2	1	0
Brisco, rf	4	1	0	0	0
Stafford, lf	4	1	0	0	0
Henson, of	4	1	2	2	0
Godfrey, p	4	0	0	0	2
<b>TOTALS</b>	<b>33</b>	<b>4</b>	<b>10</b>	<b>27</b>	<b>7</b>

X—Hit into DP for Wilson in 9th.

Y—Struck out for Brisco in 8th.

**KINGS MOUNTAIN** 000 030 010—3  
**RUTHERFORDTON** 020 110 000—4  
E: G. Harris, Dagerhart, M. Byrd, R. Abernathy, Marlowe, W. Wagoner, 2BH; Harris, Wagoner, 3BH; Marlowe, Henson, SB; O. McCarter, Hempill; DP: Smith, Roberts-Hope, Godfrey-Dagerhart-Rollins; LOB: Kings Mtn. 8, 4-5; R: 50; Of: Marlowe 2, Godfrey 3; SO: Marlowe 8, Godfrey 10; Hit by pitcher: by Marlowe (M. Byrd); WIP: Marlowe, RB: J. McCarter 2; Umpires: Mode and Crawley; Scorer: Gilbert, Time 2:00.

## FORTUNE TELLER

### ORIENT

2 3 4 5 6 7

YOU can have fun figuring out your message from the Orient by use of this pleasant little letter puzzle. If the number of letters in your first name is 5 or less, subtract from 7. If more than 5 letters in your first name, subtract from 12. Now take this result and find your key letter in the word ORIENT at the top of this puzzle. Then, starting at the upper left corner, check each one of your large key letters as it appears from left to right. Below the key letters is a code message for you.

N	I	T	O	E	R	I	O	N	I	R	E	T	N
S	L	I	C	I	O	T	T	R	I	N			
C	A	I	A	M	B	E	T	R	I	N			
O	R	E	N	I	O	N	E	T	R	I	N		
E	H	I	N	E	O	C	E	T	R	A	D		
E	R	R	T	O	N	I	T	N	I	O	R	E	
L	I	E	S	O	W	A	D	O	W	Y	C	D	
R	O	N	I	E	T	O	N	E	T	R	I	N	
O	I	U	L	E	C	T	C	H	D	I	R	S	
I	O	E	R	T	O	N	E	R	T	E	O		
E	I	F	O	I	O	S	I	R	I	O			
T	I	O	R	E	N	R	I	T	E	O	N	T	
I	I	D	O	R	E	N	R	I	T	E	O	N	T

### Footo Mineral's First Quarter Earnings Treble 1953 Period

PHILADELPHIA — The first quarter report of Footo Mineral Company showed earnings equivalent to \$1.14 per common share after estimated taxes and preferred dividends compared with 37¢ a share in the like period a year ago. Net earnings for the first quarter of 1954 were \$318,501 as

compared with \$99,454 for the same period last year.

Net sales rose 54% over those for the same period last year. Sales were \$3,208,056 while the comparable figure for the same period of 1953 was \$2,083,526. H. C. Meyer, chairman, stated that in each of the past four months, sales have been over \$1,000,000 per month whereas they averaged less than \$700,000 per month for 1953.

In view of satisfactory production conditions and the existence of considerable unsatisfied market demand for lithium chemicals, the Board of Directors recently authorized further plant expansion. The total amount of capital expenditure is not definite but will amount to several million dollars over the next two years.

The Company has announced that it will redeem all of its outstanding convertible debentures on May 5, 1954. Of the original \$1,973,000 of debentures, approximately \$380,000 are now outstanding. The remainder have already been converted into common stock.

Mr. Meyer said that a large part of the funds required for expansion will be generated internally and the remainder will be available from a new bank loan recently arranged. The Company's previous bank loan has been repaid and after conversion of the debentures, the new bank loan will be the Company's entire outstanding debt. These arrangements not only provide the additional capital to meet the demands of the higher level of business, but also will simplify and strengthen the Company's capital structure.

In 1953, 2,140,000 Americans were injured in traffic accidents,

### Bethware Downs Grover, No. Three

Bethware posted two close wins in county loop play, on April 13 defeating No. Three 4-2 and on April 9 edging Grover 3-2.

Ralph Hord went all the way against Grover and was touched for only two hits — by Billy Wells the opposing hurler, and Don Ellis, Grover catcher.

Wells gave up nine hits, with Ken Mayes, Jack Harmon and Doyle Burton each collecting a pair.

Coach Jeff Wells' nine bunched all three runs in the second inning. Mayes singled, Bobby Webster doubled, Ken Yarboro singled and Burton singled to account for the markers.

Grover came back with one in the third on a walk and an error. The final Grover run was scored in the sixth when Eddie Tucker walked and scored on a hit by Ellis.

The game was played on Bethware's new diamond.

The line score:

Grover	001	001	0-2	2	4
Bethware	030	000	x-3	9	2

Wells and Ellis; Hord and Mayes.

On Tuesday at Number Three, Eddie Yarboro pulled off a neat three-hitter as Bethware edged Babe Hamrick's lads 4-2.

The losers went out front in the second inning with a pair of runs on a base hit and two errors.

Bethware tallied a pair in the third to knot the count. The runs came on a succession of hits by David Herndon, Eddie Yarboro, Harmon and Hord.

In the sixth, Hord singled and scored the go-ahead run on an error that put Mayes on first, Bruce Green singled and Webster plated the insurance run with another single.

Webster had a perfect three for three and Hord hit two for four to pace the hitting.

The line score:

Bethware	002	002	0-4	9	2
No. Three	020	000	0-2	3	4

E. Yarboro and Mayes; Kendrick and Ellis.

Coach Wells' lads now have a record of two wins in three starts. Bethware lost its opener to Lattimore, defending county champs who are again fielding a strong club.

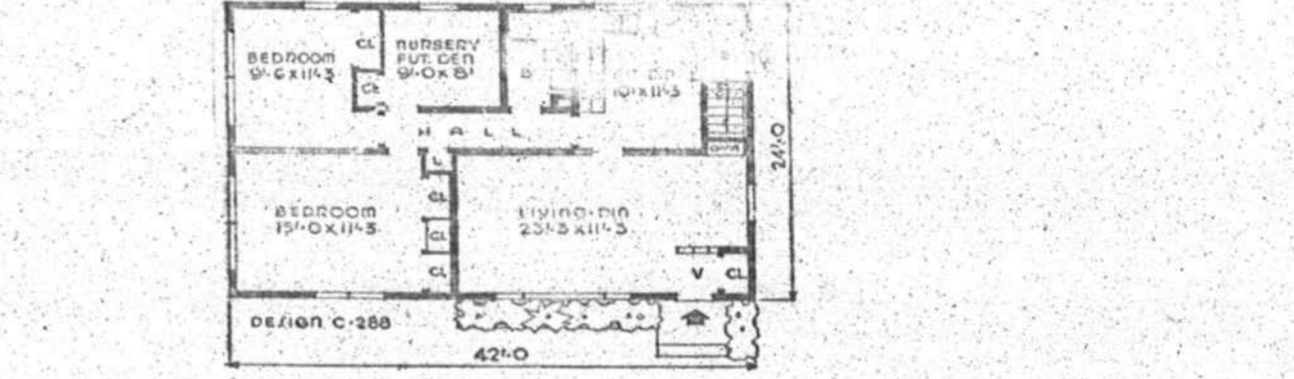
The all farm products index of prices received by North Carolina farmers at local markets decreased two points (less than 1 per cent) during the month ended March 15, 1954.

The index of prices received by United States farmers declined two points, or eight-tenths of one per cent, during the month ended March 15, 1954.

### — HERALD HOUSE OF THE WEEK —



A SMALL HOUSE PLANNING BUREAU DESIGN NO. C-288



DESIGN C-288. The most economical type of house to build is a plain rectangular plan without costly projection, using a gable roof without dormers. Here's such a plan, with living room, kitchen, bath, three bedrooms and a full basement. All plumbing for kitchen, bathroom and basement laundry is grouped in one wall and the furnace is located in the center of the basement with resulting short heating ducts.

There is dining space in the kitchen in addition to the dining room formed by the vestibule. Exterior finish on frame consists of wide siding and asphalt shingles with picture window and a brick planting area.

Floor area is 1,008 square feet and the cube is 19,152 cubic feet.

For further information about DESIGN C-288, write the Small House Planning Bureau, St. Cloud, Minn.

### James H. Joy Rites Conducted

Funeral services for James Harvey Joy, 74, were held Saturday afternoon at 3 o'clock at the First Wesleyan Methodist church. Rev. A. J. Argo, assisted by the Rev. Flay Payne and the Rev. Doc Wilbanks, conducted the rites.

Mr. Joy died at his home Thursday afternoon following an extended illness.

He is survived by three sons, Grady, of Charlotte, and Luther and James, of Kings Mountain; four daughters, Mrs. W. E. Milwood of Shelby, Mrs. W. C. Humphries of Gastonia, Mrs. F. T. Pearson and Mrs. Robert Joy of Kings Mountain; one sister, Mrs.

### Brothers Arrested On Theft Charge

Erskin Thompson, 20, of Ramseur street, and James Thompson, 24, of Fairview street, brothers, were arrested by Officers Bill Bell, P. A. Hawkins and Chief Hugh A. Logan, Jr., at their homes April 14, and charged with damage to personal property and larceny.

According to Chief Logan, the Thompson brothers admitted to digging from the ground in Gaston county, copper wiring that was the property of Duke Power Company. The brothers, Chief Logan said, also admitted to disposing of the wiring for \$5.

Laura Ballard of Kings Mountain; 16 grandchildren; and four great-grandchildren.



### Knockout Blow!

YOU can lose your home, your automobile, your savings, and all that you value, if you have to pay a judgment awarded by a jury for injuries sustained on your property.

Comprehensive Personal Liability Insurance will defend you in such an action and pay the damages up to the limit of your insurance.

**C. E. WARLICK**  
Insurance Agency  
Phone 9  
203 W. Mountain St.

**THAT "SMART LOOK"**

This family's got it! They look smart because they ARE smart... and one of the smartest things they do is to send all their clothes to us for our thorough, but-oh-so-gentle dry cleaning... which always brings back that like-new snap and sparkle!

**WEAVER'S CLEANERS**  
Phone 910 • 310 N. Piedmont Ave.

# Shell Premium Gasoline with TCP\*

## tunes your engine without tools!

Actually releases up to 15% more power by overcoming lead and carbon deposits constantly accumulating in your engine

Acts before you've finished your second tankful

Think of it! Without touching a tool—you can get up to 15% more power from your engine automatically.

The major cause of power loss—pre-ignition and misfiring—can now be overcome by the gasoline you use.

It's an engineering fact

All of today's gasolines—because they are designed to meet the needs of modern high-compression engines—contain deposit-forming compounds. This means that lead and carbon deposits are constantly accumulating in most engines. These deposits rob you of power two ways!

In combustion chambers the deposits get so hot they set off the fuel mixture prematurely. The explosion hits the piston before it's reached the proper firing position.

When this happens, power works against you, not for you. It is called pre-ignition, and it occurs most often when you actually need more power—for accelerating or climbing a hill.

The second way these deposits steal power is by coating the ends of your spark plugs. Because the deposits divert electricity, the spark "shorts out," the plug misfires. Fuel is unburned, produces no power—just wastes your money!

Now you can get that power back—tune your engine without tools with a new kind of gasoline. You do this by

The Greatest Gasoline Development in 31 years  
**SHELL PREMIUM WITH TCP**

Fred Plonk Oil Company  
Grover Road Phone 936



## TAKE THE WHEEL—just for the joy of it

(Another big reason for trying a '54 Buick)

UNLESS you've tried it yourself, you're going to find it hard to believe.

But when you press the pedal of a 1954 Buick with Twin-Turbine Dynaflo,\* joy reigns—and so do you.

You feel the joyous thrill of commanding instant response, the solid "take hold," the firm authority of your acceleration.

You feel a joyous exhilaration at the utter smoothness of the forward carry—a completely infinite smoothness that is there every inch of the way.

And you feel a deep and abiding joy at the simplicity of it all, the ease with which you drive, the blessed restfulness of travel with a truly automatic transmission working its wonders.

As we said, you'll find this hard to believe—until you try it yourself.

Until you try TT Dynaflo with the stepped-up V8 horsepowers of the 1954 Buicks. Until you try it with the new buoyancy and the new handling sureness of the improved Million Dollar Ride. Until you try it with the new visibility, the new luxury, the new "look of tomorrow" styling that

are part and parcel of every 1954 Buick.

So, we want you to be our guest at the wheel of a 1954 Buick with Twin-Turbine Dynaflo this week.

During April, 1,500,000 people will guest-drive the 1954 Buicks, and join the Thrill Of The Month Club by doing so. We cordially invite you to join them, for a real thrill. Call us today.

\*Standard on ROADMASTER, optional on extra cost on other Series.

**BUICK**  
the beautiful buy

DEAN BUICK COMPANY  
184 Railroad Ave. KINGS MOUNTAIN, N. C. Telephone 538