

Traffic Expert: Heed Signs On Highways

A highway patrol traffic expert this week reminded Tar Heel drivers how important it was to

pay close attention to highway signs.

The spokesman was Major Edwin Guy who said that the need to watch signs should, by itself, be enough to keep drivers on their toes.

"Because they give warnings, information and regulations, official highway signs have and deserve priority of the driver's at-

tention," Guy declared. "And while progress has been made in standardizing sign meaning by shape the driver often has to check the individual sign to know what it says and what he must do."

Guy said that stop signs, yield signs and railroad warning signs are nearly 100 percent standardized. He said that a driver facing

an octagonal sign should know at once that it means "STOP." That a triangular sign means "YIELD," and that a round sign is advance warning of a railroad crossing ahead. The familiar crossbuck marks the actual location of the tracks.

"It is equally true that a diamond-shaped sign means "DANGER," Guy pointed out. But the driver can't quit after he notes the shape. He must see what sort of danger is denoted by the sign. It may be a curve, an intersection, a place where a number of lanes is reduced, merging traffic or a warning of any of a number of potential hazards. If you rely on shape without paying attention to the specific message you may get into trouble.

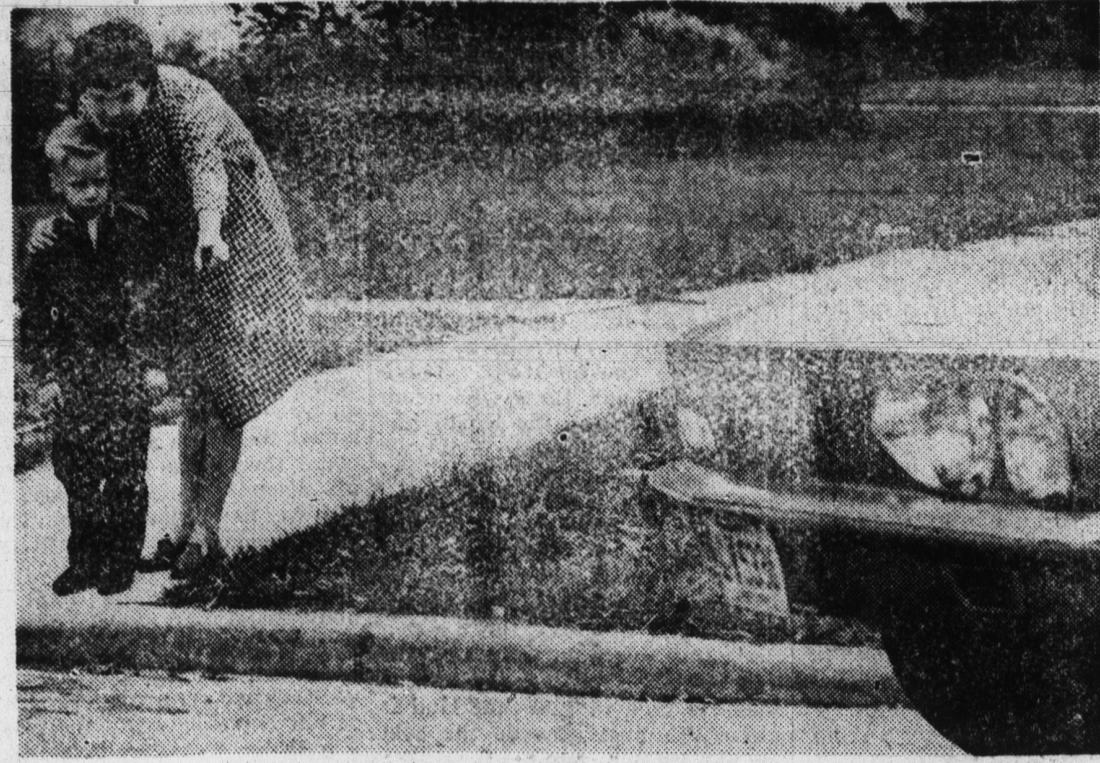
"The same holds true, only more so, for the rectangular signs used to advise the traveler of regulations. If you don't distinguish between a speed limit sign, a sign giving the school bus stop law or if you misread a parking restriction sign or a No Left Turn sign you have nobody to blame but yourself if you get a ticket or are involved in a wreck," he said.

Careful attention to all highway signs equips the driver with ample opportunity to take the required action in safety, Guy concluded.

Because of its textile industries, Fall River, Mass., is known as the "Spindle City."

Tuscarawas River in Ohio was once the western boundary of the U. S.

The North Carolina Heart Association's Willard G. Cole Awards "for distinguished coverage of the Heart story in North Carolina" are named for the late Pulitzer Prize winning editor of Lumberton.



SAFETY CHECK — "Instill in your child the habit to 'look all ways' before crossing a street" is one of the major points of a school age safety checklist recently published by the Easter Seal Society. Posed by models, this picture demonstrates the importance of looking for the automobile coming around a corner as well as those approaching along the street to be crossed. The checklist is available free from the North Carolina Society for Crippled Children and Adults (The Easter Seal Society), P. O. Box 839, Chapel Hill, North Carolina.

English Leather®



...the ALL-PURPOSE MEN'S LOTION, \$1.60, \$3.50, \$6.50... the BATH SOAP, \$3.00... the ALL-PURPOSE SPRAY LOTION, \$5.00 (refill \$2.00)... the SHOWER SOAP ON A CORD, \$2.00... the SHAVING CREAM, \$2.00... the PRE-SHAVE LOTION, \$1.50... the ALL-PURPOSE POWDER, \$1.50... the AEROSOL DEODORANT, \$1.50... the DEODORANT STICK, \$1.00... the HAIR DRESSING, \$1.50... the gift sets of ALL-PURPOSE LOTION and AEROSOL DEODORANT, \$3.50... other GIFT SETS from \$3.00 to \$10.00



Monday - Saturday

9 a.m. to 9 p.m.

KINGS MOUNTAIN DRUG COMPANY
THE CITY'S MODERN STORE

THANK YOU! GRIFFIN DRUG CO.

For Sponsoring Us During The 1965 - 66 Men's Duckpin Bowling Season.

- BOB HERNDON (Captain)
- STEVE RATHBONE
- AUD TIGNOR
- RODDY HOUSER
- FURMAN WILSON

4:14pd



Spraying or dusting to protect plants from the ravages of insect and disease pests is the best insurance you have against damage.

A good slogan: use the right materials, at the right time, properly mixed; and do a thorough job of covering all parts of the plant, especially the undersides of the leaves to control sucking insects such as aphids, red spiders and lace bugs.

All insects have a life history or cycle. That is, they undergo changes which may occur in four stages: egg, larva, pupa and adult. Or, in three stages: egg, nymph and adult. The larva and the nymph stages are usually the most destructive although the adult stage may also be destructive.

In the case of fungus diseases, it is necessary to keep the plants protected at all times. These diseases, represented by various leaf

spots of ross, apples and many other plants, produce spores. These spores germinate and attack the plant tissues. If the leaf is protected by a fungicide the spores are killed before they have a chance to enter the tissues. Once the diseases gain entrance, they are more difficult to control.

These simple examples should serve to show how important it is to keep your plants protected at all times. Many people seem to think that one or two sprayings during the growing season are all that are necessary. On the contrary, this battle against insects and diseases is never-ending. For this reason, it is best to follow a regular spray program for all of your ornamentals, fruits and vegetables.

There are many effective spray chemicals available — some for sucking insects, others for insects that chew food and some

Club To Name Top Officer

In conjunction with its "Respect for Law" program, the Kings Mountain Optimist club has initiated a program to recognize the "Officer of the Month."

Each month a secret committee of four local citizens will choose the officer of the month according to a standard of merits. The selected officer will receive a certificate signed by the Chief of Police and by the Mayor of Kings Mountain. Later the officers chosen shall be candidates for "Officer of the Year."

The officer of the year shall be recognized in a special ceremony and receive special awards.

A spokesman for the Optimist club stated "We are both thankful for and proud of our local police force and their untiring efforts to uphold our laws and their enforcement."

"Too often we are guilty of deriding our police officers... Very seldom do they get the "pat-on-the-back they deserve."

Rabies Clinic On Saturday

Dr. J. P. Mauney, veterinarian, has announced the following schedule of rabies clinics for Saturday, April 16.

- The schedule: Grover high school, 9 to 9:30 a.m.
- Whites Service Station, 9:30 to 9:45 a.m.
- Old Herndon Service Station, 9:45 to 10:00 a.m.
- Compact School, 10 to 10:15 a.m.
- Glass Grocery Store, 10:15 to 10:45 a.m.
- Park Grace School, 10:45 to 11:00 a.m.
- City Hall, Kings Mountains, 11:00 to 11:30 a.m.

combination materials which are effective against both types.

Mix all materials according to instructions given on the containers. This will insure proper concentration. Observe safety measures: by not inhaling spray or dust; by washing hands with soap and water; by storing out of reach of children and pets. Observe residue tolerances permitted on vegetables by using the different chemicals as recommended.

Your county agent will have a supply of spray calendars for the different crops or can get them for you.

EXECUTOR'S NOTICE

Having qualified as executor of the Estate of Glee Actor Bridges, deceased, all persons having claims against said estate will please file same with the undersigned on or before October 7, 1966 or this notice will be pleaded in bar of any recovery.

All persons indebted to said estate will please make immediate payment.

This seventh day of April, 1966.
J. C. Bridges
Glee Edwin Bridges
Executors
Estate of Glee A. Bridges

DECORATING TIPS
By GENE TIMMS
A NEW TREND IN USE OF FLORAL PATTERNS

Although they have never gone out of style, floral patterns — from tiny buds to large bold flowers — are becoming more and more in evidence in every branch of home decoration.

There is a trend today, for example, of greater popularity of floral patterned rugs which add a feeling of third dimensional depth and warmth to a room.

The use of florals in upholstery has been on the increase and upholstery of this type is now available in a larger and better selection than heretofore.

This is also true in drapery fabrics, wallpaper and bedspreads.

Aside from the beauty and "summer feeling" of florals, there is also a very practical reason for their use. Many times patterned fabrics show wear, soil and fading less than solid colors.

Generally, floral patterns can be used effectively in contrast with solid colors, such as a flowered sofa with a solid color rug or vice versa; solid bedspread with floral drapes, etc.

To see a wonderful selection of all kinds of furniture and some other ideas in furnishings, we invite you to come in.

Ask for a discount, we never charge full price for any item in our store, and you'll save over a hundred dollars on the average bed-room or Living room group. Cash or time, we save you more, at TIMMS FURN. STORE.

63-PIECE "Dream" HOUSEFUL

NOW ADDED VALUE... LOWER PRICES! MONTHS TO PAY AT STERCHI'S!



EVERYTHING FOR THE BRIDE'S NEW HOME AT ONE LOW PRICE

12-PC. BEDROOM WITH TRIPLE DRESSER
• 9-Drawer Triple Dresser with Tilting Mirror
• Bookcase Bed • Spacious Chest • Dresser Lamp • 2 Shredded Foam Pillows • Bedspread • 3 Pictures • Mattress and Box-spring

12-PC. MODERN SOFA-BED GROUP
• Sofa-Bed in Viscose Tweed
• Matching Chair with Foam Cushion
• Modern End Tables • Modern Cocktail Table • 2 Modern Table Lamps • 3 Beautiful Pictures • 2 Sofa Pillows • All Expertly Constructed

39-PC. DINETTE ENSEMBLE INCLUDES DINNERWARE
• 7-Pc. Chrome Dinette • Large Table • 6 Matching Chairs • 32-Pc. Dinnerware Set Service for 6

\$399

COMPLETE

NO MONEY DOWN!

YOU CAN PURCHASE ANY COMPLETE ROOM GROUP SEPARATELY!

39-Pc. Dinette Ensemble \$59.95

IT COSTS LESS AT—
Sterchi's
THE SOUTH'S LARGEST HOME FURNISHERS

EVERYTHING YOU WANT AND NO MONEY DOWN!

Open Evenings By Appointment

Phone 739-5451, Kings Mountain, N. C.

FREE Delivery To Any Surrounding Community - See Henderson Herndon or Don Barrett Your Friendly Sterchi Salesmen