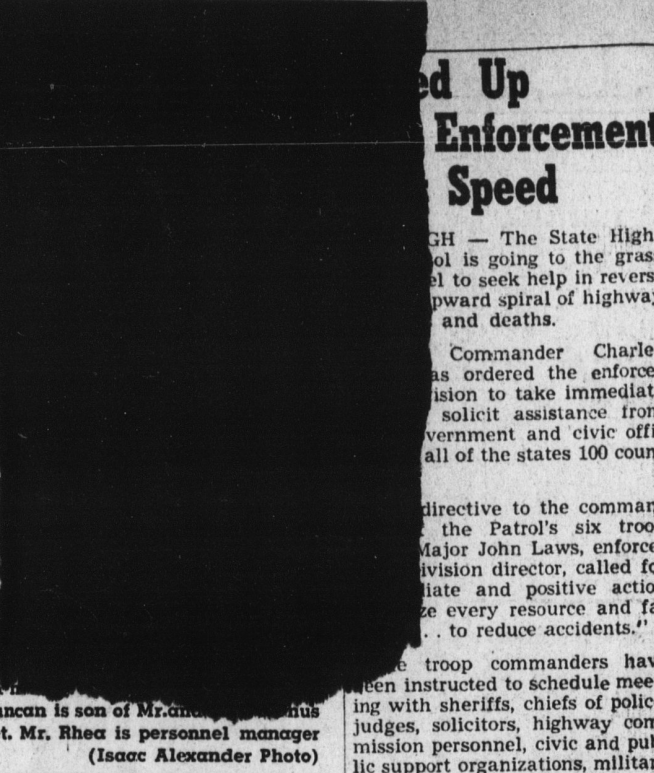




**WINS PERFECT ATTENDANCE**  
receives from J. E. (Bud) Rhea in a perfect attendance contest at Craftsman Yarns, Inc. Duncan is working every day for the past 100 days in the shift bleaching department. Duncan is son of Mr. and Mrs. J. E. Duncan of 205 Katherine street. Mr. Rhea is personnel manager at Craftsman.



### Speed Up Enforcement

— The State Highway Patrol is going to the grass roots to seek help in reversing the spiral of highway accidents and deaths.

Commander Charles Speed has ordered the enforcement division to take immediate action to solicit assistance from government and civic officials of the states 100 counties.

Directive to the commander of the Patrol's six troops, Major John Laws, enforcement division director, called for late and positive action to reduce every resource and effort to reduce accidents.

The troop commanders have been instructed to schedule meetings with sheriffs, chiefs of police, judges, solicitors, highway commission personnel, civic and public support organizations, military personnel where appropriate and all news media in each of the 40 patrol districts.

### Burlington Yarns Names McClure Regional Manager; Beason Named

Robert E. McClure, formerly plant manager of the Ranlo Plant at Gastonia, has been named a regional manufacturing manager of Burlington Yarn Company, a division of Burlington Industries.

Announcement of the appointment was made by Charles Stripling, a High Point, division manufacturing vice president.

Mr. McClure's new responsibilities involve Burlington Yarn's Ranlo and Flint plants at Gastonia, Phenix Plant at Kings Mountain, and Lincoln Plant at Lincolnton. His offices remain in Gastonia.

Mr. McClure has been succeeded by Frank Deason, who was promoted from technical assistant at Ranlo.

**MR. MCCLURE**  
A native of Anderson, S. C., Mr. McClure joined Burlington at Ranlo in 1955. His assignments included duties at Flint, R.C.G. Love, St. Pauls, Phenix and Robeson plants. He became manager of the Company's Robeson Plant at St. Pauls in 1964 and assumed joint duties as manager of the Robeson and Butler plants there in 1965. He became manager of the Ranlo Plant later the same year.

He earned his B.S. degree in textile engineering in 1955 at Clemson University and received additional training at the University of Michigan in 1966.

He is a Mason and a Shriner, a member of the Charlotte Textile Club, and member of the First Presbyterian Church of Gastonia. He serves as secretary of the Ranlo School Board. He was an electronics technician in the U. S. Navy.

His wife is the former Alice Howard of Clemson; they have a son and a daughter.

**MR. DEASON**  
Mr. Deason is a native of McCormick, S. C. He served in the U. S. Army and received his B.S. degree in textiles at Clemson University in 1951.

He joined Burlington Industries in 1955 as a shift supervisor at Raeford. He served the Company at positions in various phases of yarn manufacture, including yarn superintendent at Raeford. He transferred to Hot Springs, N. C., to manage the Company's plant there prior to moving to Ranlo in January.

Mr. Deason and his wife, the former Elaine Tucker of Phenix, Va., have two sons; they attend the First Presbyterian Church of Gastonia.

He is active in the Red Cross and the Lions Club.

Subscribe To The Herald



### ELECT

## J. "DOC" TURNER

### FOR

## CLEVELAND COUNTY BOARD OF COMMISSIONERS

### DEMOCRATIC RUN-OFF JUNE 1st

- Member, Clover Hill Methodist Church
- Marine Overseas Veteran
- Licensed Surveyor
- Resident Route 1, Lawndale

**YOUR VOTE WILL BE APPRECIATED**

5:23-30pd

### VA Questions And Answers

**Q**—I receive \$130 a month from the Veterans Administration for training under the G. I. Bill. I expect to get married soon. What must I do to receive the \$155 rate of training allowance?

**A**—As soon as you are married, notify the VA. Then send VA a copy of the public record of your marriage as soon as it is available.

**Q**—As an unmarried widow of a World War II veteran who died of a service-connected disability, am I still eligible for the Veterans Administration guarantee on a G. I. loan?

**A**—Yes, you are. The Veterans' Pension and Readjustment Assistance Act of 1967 extended your period of entitlement to July 25, 1970.

**Q**—My husband has a \$10,000 National Service Life Insurance policy. In March of 1967 he converted from a term plan to modified life. He received a very small dividend in 1967 and none in 1968. Is the VA paying a dividend in 1968?

**A**—Yes. The VA is paying dividends in 1968 on those policies that qualify for the dividend. The small dividend your husband received in 1967 was for the number of months the term policy was in force since the previous anniversary at prior to conversion to the modified life plan.



I feel that I have the knowledge to keep Cleveland County moving forward, the ability to keep it from moving backwards, the common sense to know the difference.

**JUNE 1 VOTE** Democratic Runoff  
**FRITZ MOREHEAD, JR.**  
CANDIDATE FOR COUNTY COMMISSIONER

### Memorial Day Traffic Deaths Will Be High

Memorial Day could become a memorable day on North Carolina's streets and highways if the trend isn't reversed from the recent Easter holiday period, warns the N. C. State Motor Club, which estimates that at least 28 persons will be killed in more than a thousand traffic accidents during the long weekend.

Since some offices will be closed on Friday, the state will count its highway toll from 6 p.m. Wednesday, May 29, through midnight Sunday, June 2, a period of 102 hours. A similar period last year claimed 30 lives and brought injuries to 645 persons in 1,032 accidents.

The three-day Easter weekend toll in April this year soared to a new high for all state holiday periods as highways deaths climbed to 41, eight more than the previous high.

Fourteen of the 30 traffic deaths counted last Memorial Day were recorded on Saturday. Leading driver violations were: speeding, 207; failure to yield right of way, 138; driving left of center, 121; and following too closely, 98.

Thomas B. Watkins, motor club president, called upon motorists to make an all-out effort to stem the rising highway slaughter.

"We are alarmed and deeply concerned that highway fatalities are now running well ahead of last year's pace," he said. "An unusually large number of multiple-death accidents have exacted a high price. Weekends are the most dangerous time on our highways, with the most lives lost on Saturdays, followed by Sundays and Fridays. An extended period will make Memorial Day that much more dangerous, so please drive carefully and help reverse this trend."

Local sheriff's departments and county police will be asked to assign a larger number of men to work rural roads, and city police will be encouraged to step up their traffic activity especially in the area of pedestrian and youthful violators.

"We would encourage the news media in every county to give more of their attention to highway accidents," Colonel Speed said. "Not just the simple act of reporting an accident, but a concerted effort to warn people of the dangers which now face them on the streets and highways."

Currently highway deaths are running approximately 60 ahead of the same period as last year. During the first five months of 1968 multiple fatality accidents reached record proportions.

"So far this year there have been 18 multiple fatality accidents involving three or more persons," Colonel Speed said. "These 18 accidents have taken the lives of 81 persons."

A record check indicates that more lives have been lost in multiple fatality wrecks in the first five months of 1968 than in any other full 12 months period.

A totally deaf person can easily send or receive messages by operating a TWX machine. It works much the same as a standard typewriter. The deaf person can send a message across the street or across the nation.

### Corn Earworm Is Problem For Farmers

Anyone who has ever grown a vegetable garden knows what a problem the corn earworm can be. There are ways to stop this and most of the other pests that plague the North Carolina gardener and commercial vegetable producer.

The corn earworm can be controlled by the application of DD1, 25 per cent emulsifiable concentrate mixed at the rate of five gallons in 100 gallons of water and applied at the rate of 25 gallons per acre.

Or, carbaryl can be used for the same purpose mixed 50 per cent wettable powder at the rate of 16 pounds per 100 gallons of water and applied at the rate of 25 gallons per acre.

These are recommendations of the Agricultural Extension Service at North Carolina State University. These and other suggestions for controlling all major vegetable insects found in North Carolina are contained in the 1968 "Vegetable Insect Control" guide.

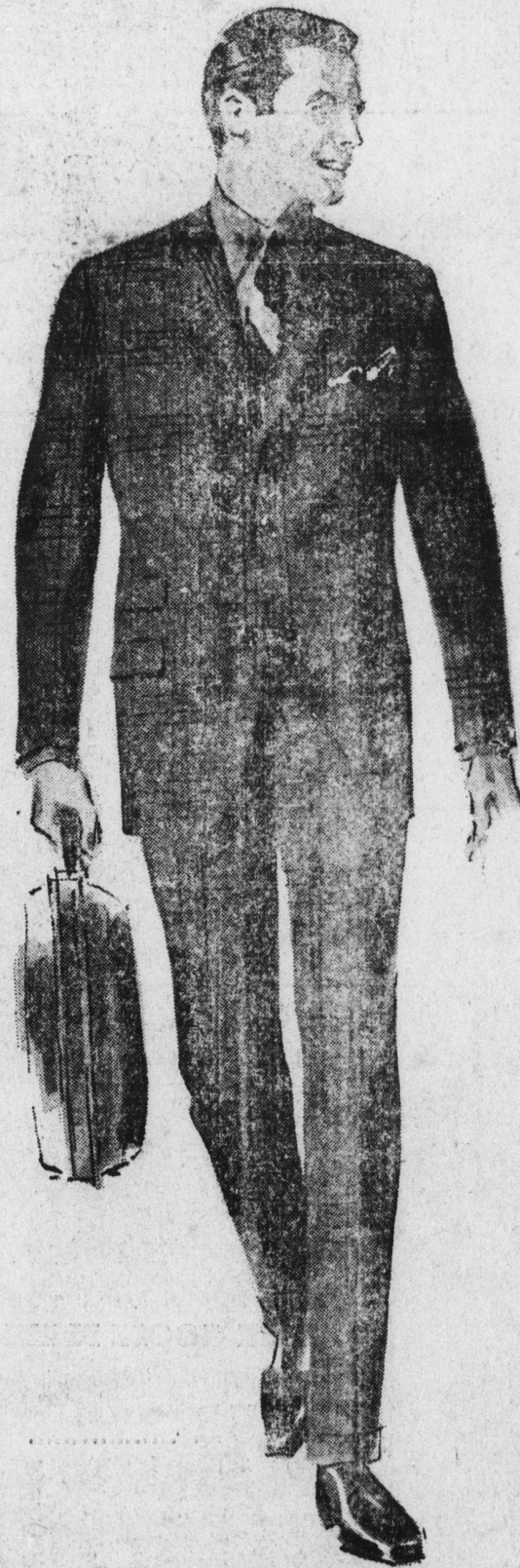
The publication is available at all county extension offices or may be obtained by requesting leaflet 138, Department of Agricultural Information, N. C. State University, Raleigh, N. C. 27606.

In the 16-page leaflet, many of the most common insects are illustrated in order to help the reader identify the insect he has on his beans, beets, cabbage, etc.

Recommendations are thorough and specific. For example, eight bean pests are identified and control measures given for each.

One recommendation the extension specialists urge above all others: follow instructions on the package label to the letter—for safety and effectiveness.

# Cool Wearing Men's Suits



This year, get real relief from the heat. Com in and choose from our selection of handsome, lightweight suits . . . . everything for warm weather wear, designed to make your summer one of pleasant comfort as well as good looks.

Dacron - Wool, Dacron - Cotton  
Dacron - Rayon, Tailored By

- Griffon
- Warren Sewell
- Middishade

Solid Colors, Plaids, Stripes  
Sizes 35 to 48  
Regulars, Shorts, Longs

## \$34.99 to \$75



Lay Father's Suit Back  
Now For Father's Day

# P L O N K ' S

## McGINNIS Furniture

# WOW!

NOT \$39 — NOT \$29

But for  
3  
DAYS  
ONLY



While They Last

# \$18.88

Maple or Mahogany Finish

"Just The Rocker For That Spot In Any Room"

SHOP EVENINGS 'TIL 5:30 P.M. Close Wednesday At Noon  
Close Saturday at 5:30 p.m.