

Subscribe To The Herald

Col. KM Saver Says . . .



HONESTY IS THE BEST POLICY is still a vital truth. We must live with ourselves 24 hours a day — every day. Self respect is most essential for contentment. Employers, loan personnel, and others can sense this personal honesty . . . a good reputation opens many doors to success.

Kings Mountain Savings & Loan Association

P. O. BOX 746 KINGS MOUNTAIN, NORTH CAROLINA 28004



Sometimes we become confused about the terms used in classifying plant pests and the chemical formulations employed to control them. Perhaps a definition of some of the terms will be helpful. Remember, too, that all pesticides are potentially dangerous and should be handled with extreme care.

Pesticide: a chemical substance used to destroy pests which attack plants and animals. This is a broad term. If we break it down we get:

Insecticide: a chemical substance used to control chewing insects (tomato hornworm); and sucking insects (spider mites and aphids).

Fungicide: a chemical substance used to control fungus diseases (black rot of bunch grape, azalea petal blight, rose leaf spot, etc.).

Rodenticide: any material used to combat rodents — mice, moles, gophers and rabbits. These may be chemical ground sprays or baits. In the case of rabbits, a repellent is sometimes effective.

Nematocide: a chemical substance used to reduce the nematode population in the soil.

Herbicide: a chemical formulation used to control weeds. Some weed killers are used to kill all vegetation while others are highly selective. Some are applied before the plants emerge (pre-emergence) while others are effective after emergence (post-emergence). READ THE LABEL.

Wettable Powder (WP): a compound formulated with a wetting agent which causes the spray, when applied, to spread and adhere to plant surfaces more thoroughly.

Emulsifiable Concentrate (EC): a compound formulated with an emulsifying agent which facilitates the suspension of one liquid in another.

Systemic Poison: a plant poison which is moved within the plant (translocated) through the circulatory (vascular) system. These poisons may be injected, applied to the soil and absorbed by the roots or applied as sprays and absorbed through the leaves on another plant tissues. Must be used with extreme caution.

Fumigants: chemical compounds which change from either the solid or liquid form to vapor or gas. Some of the fumigants are effective against both nematodes and fungus diseases. Do not breathe.

Residue: certain pesticide residues are permitted on edible crops which are expressed in PPM (parts per million). Some are safe and exempt while others have a waiting period which gives the number of days as the minimum time between the last application and harvest time. READ THE LABEL.

Hord Finishes Aerospace School

SAN ANTONIO—Airman First Class Larry J. Hord, son of Mr. and Mrs. James B. Hord of 527 Katherine Ave., Kings Mountain, N. C., has been graduated from the medical service specialist course at the U. S. Air Force School of Aerospace Medicine, Brooks AFB, Tex.

Airman Hord, trained to assist in the care and treatment of patients, is being assigned to Robins AFB, Ga.

The airman is a graduate of Kings Mountain High School.

KINGS MOUNTAIN and BESSEMER CITY

DRIVE-IN THEATRE

ALWAYS \$1.00 A CARLOAD!

THURS.-FRI.-SAT. — 3 HITS!

No. 1 — "Don't Just Stand There"

No. 2 — "King Kong Escapes"

No. 3 — "Sons of Katie Elder"

ON SAT. MOVIES RUN IN REVERSE ORDER

SUN. thru TUES. — 2 HITS

No. 1 — "Devil's Brigade"

No. 2 — "3 Guns To Texas"

Wed. Movies Run In Reverse Order.

Liberty Life Wins Trophy

The Kings Mountain branch office of Liberty Life Insurance Company has earned the Statute of Liberty as the Company's Central Regional monthly leader. According to the home office officials in Greenville, S. C., the award is given to the leading office in the approximately 15-branch territory.

P. E. Szymborski is manager of the Kings Mountain office. J. W. Morehead is staff manager. Representatives are C. E. Hamrick, P. R. Farris, J. M. Crisp, C. N. Jones, V. L. Neal and R. L. Eam.

THE LABEL.

Spray Drift: the air movement of spray particles from the intended treatment area. If you are using 2,4-D for example, on your lawn, do not let the spray "draft" to your roses, grapes, etc. as serious damage may occur.

COMEDY CORNER



CARD OF THANKS
We wish to express our heartfelt appreciation to the many friends and neighbors for their kind expressions of sympathy at the death of our loved one.
Marcus Henson and family
11:7

CARD OF THANKS
We wish to express our heartfelt appreciation to the many friends and neighbors for their many kindnesses and expressions of sympathy at the death of our loved one.
THE FAMILY OF DONALD HENDERSON

Having A Wedding?
Call
Paul Lemmons
Phone 487-4502
Photographer



PHONE 739-2176
THURS. - FRI. (G) RATING Shows 3-5-7-9

"THE PRIVATE NAVY OF SGT. O'FARRELL"
TECHNICOLOR United Artists THEATRE

SAT. (M) RATING Shows Start 1:00 p.m.

JOHN KIRK WAYNE DOUGLAS "THE WAR WAGON" — ALSC —

Doug McClure / Nancy Kwan "Nobody's Perfect"

SAT. LATE SHOW 10:00 (X) RATING ALL SEATS \$1.25 ADULT

SUN.-MON.-TUES.-WED. (G) RATING Shows 3-5-7-9

"With Six You Get Eggroll" Doris Day Brian Keith

COMING SOON "THE PARENT TRAP" "THE SPLIT" "COOGAN'S BLUFF"

Today's go-anywhere, do-anything Hush Puppies.



Fritzie \$9.99 & \$11.99

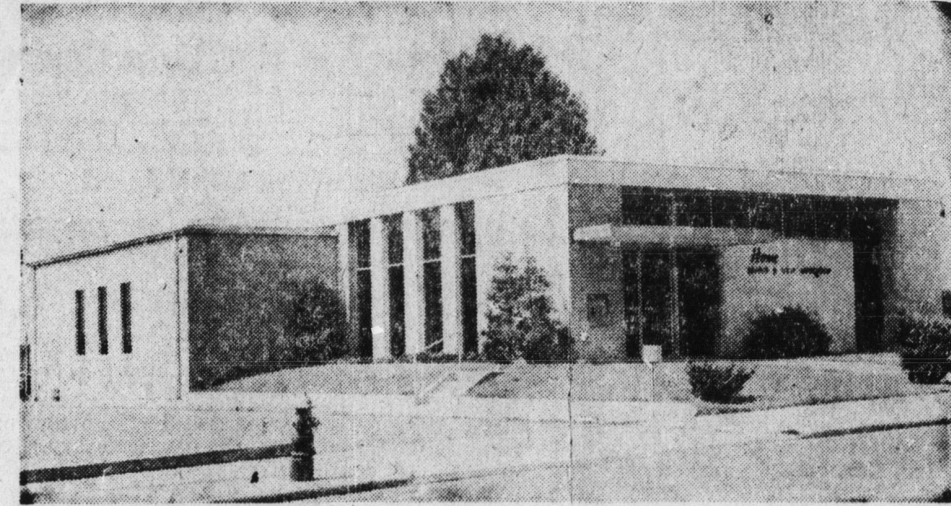
BRUSHED FIGSKIN AND SMOOTH LEATHER

NARROW MEDIUM/WIDE

Get the right shoe size every time with Hush Puppies casuals. We fit hard-to-fit feet easily with a full range of sizes and widths. Try on the new fall styles and see how it's done.

Hush Puppies PLONK'S

No Better Place To Save And Earn



Invest In Full-Paid Shares or Optional Shares and Receive Quarterly Dividends at 4 1/2% Per Year. Invest In Six-Month Shares (Minimum \$5,000, Increments of \$1,000 Thereafter) and Earn at 5% Per Year. Join Our Growing Group of Well-Paid Investors. Yes, You Can Earn While You Sleep!

Home Savings & Loan Association

106 E. Mountain FREE Parking Drive-In Window Service

No. 1 RCA for the money SPECIALS \$495

Big Screen Color—SPECIAL Low Price



The LATHAM Model CJ-6195 23" diag. 295 sq. in. picture



\$595 The DEKALB Series CH-600 23" diag. 295 sq. in. picture

BEAUTIFUL CARVED FRENCH PROVINCIAL

TIMM'S furniture