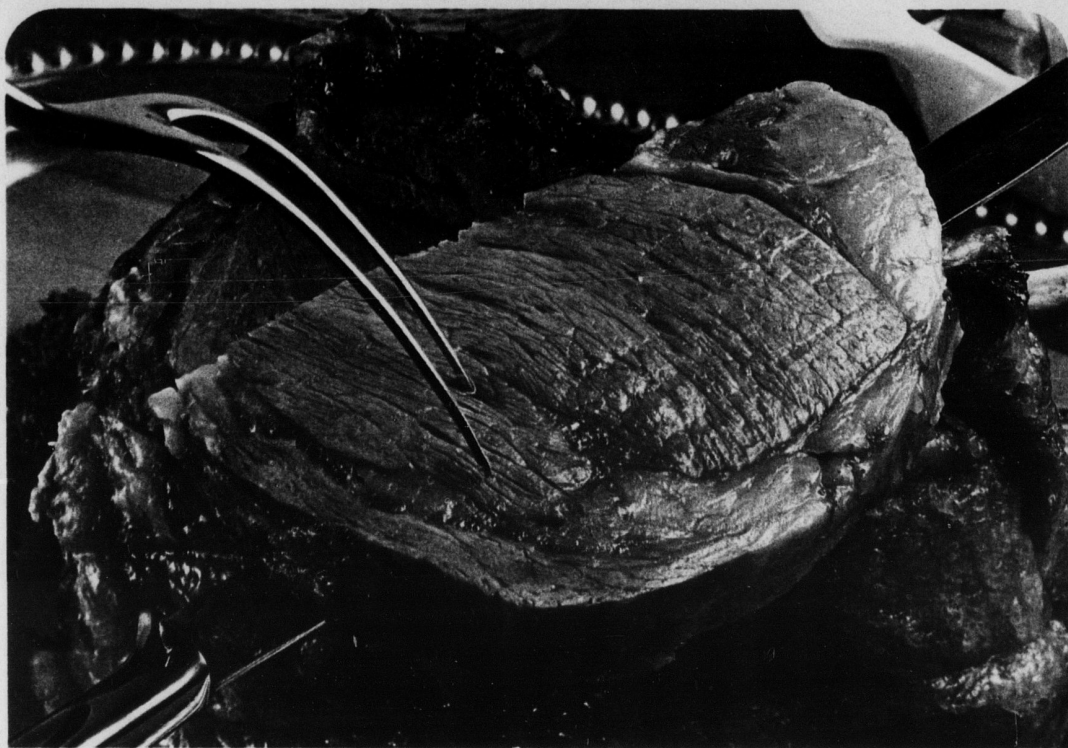


U. S. CHOICE WESTERN BEEF  
(4th THROUGH 8th RIB)

# RIB ROAST

**\$7.09**  
LB.



U. S. CHOICE WESTERN BEEF

**SHOULDER ROAST** BONE-IN .... LB. **79<sup>c</sup>**

U. S. CHOICE WESTERN BEEF

**BRISKET** ..... BONELESS FULL CUT LB. **99<sup>c</sup>**

U. S. CHOICE WESTERN BEEF STEAK

**NEW YORK STRIP** LB. **\$1.99**

U. S. CHOICE  
WESTERN  
BEEF

# CHUCK ROAST

CENTER CUT  
BONE-IN

LB.

# 53

TREASURE ISLE COOKED  
**SHRIMP**  
10 OZ. **89<sup>c</sup>**

KING'S FROZEN DINNER  
**BEEF STEAKS**  
10 <sup>2 OZ.</sup> PATTIES **99<sup>c</sup>**

MERICO BIG FLAKY  
**BISCUITS**  
2 <sup>9.5 OZ.</sup> CANS **39<sup>c</sup>**

OLD FASHION  
**HOOP CHEESE**  
LB. **89<sup>c</sup>**

*from our meat dept.*

U. S. CHOICE WESTERN BEEF  
**CHUCK STEAK** BONE-IN LB. **69<sup>c</sup>**

U. S. CHOICE WESTERN BONE-IN SHOULDER  
**STEAK** ..... LB. **89<sup>c</sup>**

FRESH LEAN GROUND  
**CHUCK** <sup>SMALLER</sup> <sup>3 LBS. or</sup> <sup>PACKS</sup> <sup>MORE LB.</sup> **79<sup>c</sup>**  
LB. 89<sup>c</sup>

HORMEL SLICED  
**BACON** ..... LB. **69<sup>c</sup>**

*"Vernedale Salads"*

H-T VERNEDALE SWEET & SOUR  
**SLAW** ..... 16 OZ. CUP **39<sup>c</sup>**

H-T VERNEDALE  
**CHILI** ..... 8 OZ. CUP **39<sup>c</sup>**

H-T VERNEDALE BAR-B-Q  
**PORK** ..... 8 OZ. CUP **85<sup>c</sup>**

