

### TAXPAYERS ASK IRS

This column of questions and answers on federal tax matters is provided by the local office of the U. S. Internal Revenue Service. The column is published as a public service to taxpayers. The column answers questions most frequently asked by taxpayers.

**Q.**—I owed some additional tax this year when I filed my return. Should I now arrange for more withholding so that I don't owe next year?

**A.**—Most taxpayers need not arrange for additional withholding. Under the Revenue Act of 1971, the withholding tables will make the amount withheld for 1972 more closely match the tax liability for the year.

In the past many taxpayers

had been claiming fewer exemptions than they were entitled to in order to avoid paying additional tax at the end of the year. These persons may now file with their employers a new Form W-4.

—Employees Withholding Exemption certificate—claiming all exemptions to which they are entitled; they no longer need to claim fewer exemptions to avoid paying large income tax bills each April.

Under the new withholding tables certain taxpayers may claim a "special withholding allowance" which is like another exemption. It can only be claimed for withholding purposes, not on income tax returns.

A single person or married person whose wife or husband

does not work is entitled to claim the special withholding allowance. However, it may not be claimed by a person who works at two jobs concurrently. Single persons with incomes under \$25,000 and married taxpayers with incomes under \$31,000 should claim the special withholding allowance if the equally.

Extra allowances may also be claimed by taxpayers who have large itemized deductions. The W-4 contains a table that will show the number of extra allowances that may be claimed for large itemized deductions. These extra allowances, like the special withholding allowance, may be claimed only for withholding purposes, not on income tax returns.

Forms W-4 may be obtained either from employers or IRS offices.

**Q.**—Can correspondence courses ever be deductible as educational expenses?

**A.**—Yes. You may deduct the ordinary and necessary expenses you incur for correspondence courses that:

1. Meet the requirements of your employer, or requirements of law or regulations, or keeping your salary, status, or employment.
2. Maintain or improve skills required in performing the duties of your present employment, or trade or business.

If the education is part of a program of study that will lead to qualifying you in a new trade or business, you may not deduct your expenses. The same is true for expenses incurred for education you need to meet the minimum educational requirements for qualification in your employment, trade or business.

**Q.**—I paid my daughter's Federal and State income taxes last year. Do these payments count toward support I furnished for

her when I figure out whether or not I can claim her as a dependent?

**A.**—No. Federal, State or local income tax payments are not to be considered in determining total support.

**Q.**—I received a fee for serving on a jury for two weeks. Is this taxable?

**A.**—Yes. Fees for jury duty must be included in your gross income.

**Q.**—My son, who is a college student, will probably earn over \$750 during the summer vacation. Does this mean that I can't claim him as a dependent this year?

**A.**—If your son is a full-time student during some part of each of five months of the year, he can earn any amount and still be claimed as your dependent if you still contribute more than one-half of his total support for the year and if the other dependency tests are made. The same rule applies to taxpayers' children who are under 19 at the end of the year.

#### VIRGINIA HAM

If you buy a product labeled "Virginia" ham, it must be produced in the state of Virginia.

A product labeled "Virginia-style" ham is produced in a state other than Virginia, observes Mrs. Ruby Uzzle, extension consumer marketing economist, North Carolina State University.

#### CURRY COOKING

An exotic blend of many spices, curry powder is the standby of Indian cookery. Wonderfully versatile, it gives an exciting pickup to leftover meats, stews and fish dishes.

The Kansas river is also known as the Kaw.

### Pick Good Wax Remover

**RALEIGH.**—Removing accumulated floor wax can be a big chore for most homemakers.

So extension home economics specialists, North Carolina State University, recommend using a commercial floor cleaner.

To remove accumulated self-polishing waxes, use one of the commercial wax removers on the market that requires mixing with hot water, the specialists advise.

These cleaners are to be used on hard surface floor coverings, such as the printed or inlaid lin-

oleum or vinyl plastic. They are not recommended for wood floors.

To prevent an accumulation of wax, use a remover about twice a year. Clean only small areas of the floor at a time. The cleaning solution should not dry on the floor before it is wiped up and the floor rinsed.

Also, it is not necessary to apply wax all the way to the baseboard with each waxing. Since there is little wear along the wall, application of wax to within 12 inches of the wall usually is sufficient.

### You Can Now Get Information By Telephone

The Social Security administration, in its continuing effort to render better service to the public, is placing emphasis on conducting business by telephone.

Lex G. Barkley, manager of the Gastonia office, stressed that the same skilled personnel who have provided in-person service in the past are available to furnish information in connection with general and specific inquiries over the telephone. Where a case can't be handled by telephone, a personal interview can be arranged. Persons who wish to make use of this telephone service may call the social security office in Gastonia at 864-5434.

South American Indians grew pineapples.

### Bonds Sales At New High

Sales of U. S. series I and series H savings bonds in Cleveland county for March were \$67,833, January-March sales totaled \$210,888. This represents 24.9 per cent of Cleveland county's total of \$844,030, according to George Blanton Jr., Cleveland county volunteer chairman.

March sales of U. S. savings bonds in North Carolina were over \$7 million for the third consecutive month and the highest monthly sales since January 1947. Sales of series E and H savings bonds for the first quarter amounted to \$22,038,650, an increase of 18.6 per cent over sales for the same period last year. . . . Another 27-year record.

Nationally, total March sales were over one-half billion dollars, a 13.3 per cent increase above 1971 sales. Total cash sales of E and H bonds for the first quarter of 1972 amounted to \$1,640 million, 19.3 per cent above a year earlier. The American people have bought more savings bonds in the first quarter of 1972 than they have in any quarter since the War Loans of 1945. E and H sales exceeded redemptions at cost price by \$213 million in March, the highest amount since H bonds were introduced in 1952. The cash value of series E and H bonds and Freedom Shares outstanding on March 31 attained a new peak of \$55.6 billion. Holdings of series E and H bonds topped \$55 billion for the first time, showing a net investment growth of \$320 million during March, the largest monthly gain since December 1945.

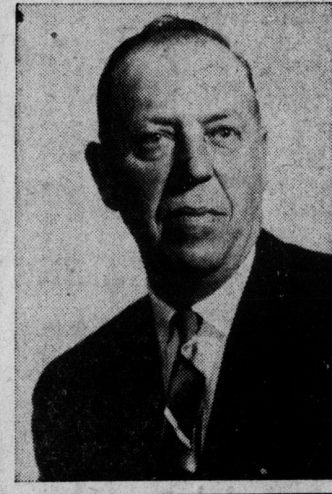
**TAKE YOUR MEDICINE AS LONG AS NECESSARY**

One of the hardest things the doctor has to do is to persuade his patients to keep on taking their medicine as long as he thinks it necessary. Many people think that they are cured just because they start to feel better. However, many drugs do not cure—they are taken to control an illness.

Don't fear taking your medicine. Instead, place your confidence in the knowledge and experience of your physician and follow his instructions exactly. He knows what a drug can and cannot do and how long it will usually take to get the job done.

**YOU OR YOUR DOCTOR CAN PHONE US when you need a delivery. We will deliver promptly without extra charge. A great many people rely on us for their health needs. We welcome requests for delivery service and charge accounts.**

**KINGS MOUNTAIN DRUG COMPANY**  
THE CITY'S MODERN STORE  
PHONE 739-2571



**RE-ELECT ROBERT HUBBARD**

Having served one term as County Commissioner I feel I am better qualified to serve Cleveland County next term.

**May 6 Democratic Primary**

**CLEAN WATER**  
IT'S UP TO YOU!  
VOTE for Clean Water Bonds  
NO TAX INCREASE!  
**MAY 6**  
This message in the Public Interest by the N. C. Clean Water Bond Committee

It all started when I was 2...



with a **Home Savings & Loan**

Savings account

My parents opened it for me and added to it each week, so that I'd always have some money of my own. We named it the Dream Fund — it was supposed to help make dreams come true. It did... a lovely wedding, a new apartment, and a nest egg, too.

**6% interest** compounded quarterly

All Earnings are paid 4 times each year as of the last day of March, June, September, and December.

If your present certificates merit a change to earn the higher rates, we will be happy to change them.

Savings deposited on or before the 10th of each month earn dividend for the whole month.

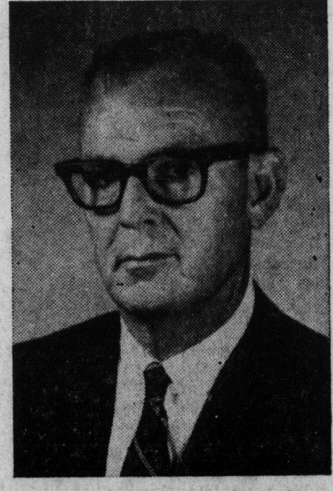
Savings insured by the Federal Savings and Loan Insurance Corporation to \$20,000.00.

**Home Savings & Loan Association**

Established 1923  
East Mountain Street Ph. 739-2531

**For County Commissioner**

**Josh Hinnant Industry-Seeking Go-Getter**



In April 1967, L. E. (Josh) Hinnant was appointed co-chairman of Kings Mountain Mayor John Henry Moss' industrial committee.

His service since has been of great benefit to Kings Mountain, to Cleveland County and to Cleveland County citizens.

First of ten new industrial citizens to begin operations in the Kings Mountain area of Cleveland County since the county commission candidate went to work at his new (non-paying) job, was a branch of Alcan Aluminum Company (the world's largest). Alcan decided to locate in Kings Mountain in June of that year and began operations in December.

Take a look at the growth in the Kings Mountain tax base:

1966	\$23,116,466
1971	\$38,624,120

**ROUND FIGURE GAIN: \$15,500,000**

Tax base gain for Cleveland County was greater, as two of the ten new industrial citizens, Concept Furniture and Spectrum Textured Fibres, are located outside the Kings Mountain city limits.

An expanding tax base is a means of keeping tax bills lower.

More important to the individual is **JOB**. These new industries employ 1800 persons.

Josh Hinnant, a banker, is as interested in maintaining lowest possible tax bills as anyone and perhaps more than most. He is keenly aware of the large increase in the taxable value of your real estate, effective with upcoming tax bills, and of your fear of further increases in your county tax bill.

**SATURDAY, MAY 6 DEMOCRATIC PRIMARY**

**X L. E. 'Josh' Hinnant**

**FOR COUNTY COMMISSIONER**

(Political Advertisement Paid For By Friends of Josh Hinnant)