

**KM-Hickory  
Boxscore**

Hickory	Ab	R	H	Rbi		
Check, rf	6	1	2	0		
Cook, 2b	6	1	2	2		
Huffman, cf	6	1	3	1		
Lutz, 3b	6	2	3	0		
M. Hefner, ss	7	1	1	0		
G. Hefner, c	4	1	0	0		
Dunton, lf	6	1	2	1		
Ledford, 1b	3	0	0	0		
Aernathy, 1b	2	1	0	1		
Walker, p	4	0	1	0		
Reid, p	0	0	0	0		
<b>Totals</b>	<b>50</b>	<b>9</b>	<b>14</b>	<b>5</b>		
<b>Kings Mtn.</b>						
Moore, 2b	7	1	2	1		
Withers, 1b	7	1	3	0		
Parker, ss	7	0	2	2		
Bolin, c	5	1	1	0		
Hartsoe, p-cf	4	2	1	0		
Hord, cf-p	3	1	1	0		
Eshols, lf	4	2	3	1		
Bridges, 3b	4	0	1	0		
Hicks, rf	3	0	1	0		
Fitts, rf	1	0	0	1		
<b>Totals</b>	<b>45</b>	<b>8</b>	<b>15</b>	<b>5</b>		
E-Bridges, Hartsoe, Moore, M. Hefner, LOB-KM 13, Hickory 21, 23-Bolin, Eshols, Huffman 2, 3B-Parker, SAC-Hartsoe, Bridges, Check, SF-Abernathy.						
<b>Pitcher:</b>	<b>IP</b>	<b>H</b>	<b>R</b>	<b>E</b>	<b>BB</b>	<b>SO</b>
Walker	8	13	5	4	4	5
Reid (W)	4	2	3	3	4	8
Hartsoe	8 1/2	7	5	3	9	10
Hord (L)	3 2/3	7	4	4	3	2
HBP-Rolin, by Walker; Fitts, by Reid. WP-Hartsoe, Walker. T: 3:30. U-Waters and Allison.						

**BIBLE SCHOOL**

Vacation Bible School at Faith Baptist church is scheduled for June 12-16 with classes for all ages, including a special class for adults.



**GARDEN TIME**  
m. e. gardner  
n. c. state college

A requester has been received concerning the proper method of handling red raspberry plants after the fruiting period has been completed. Since there is similarity in the handling of black raspberry and dewberry plants we might as well give attention to all three.

The red raspberry: Old fruiting system. Cut the old canes immediately after the crop is (suckers) will come from root buds.

If you are using the hedge-row system of training, do not let rows become wider than about two feet. This can be done by cutting out (roots and all) suckers as they appear. If you are using the hill system, save 840 canes from the 1973 crop and

**More About Post 155**

in the first, then put the game on ice with three in the second, two in the fourth and three more in the sixth.

Parke's double plated Withers, who had doubled for the first KM run and that turned out to be the winning tally.

Parke's double plated Withers, singles in the three-run second, David Bolin had the only hit in the two-run fourth, and Hartsoe, Parker and Darrell Van Dyke had hits in the three-run sixth.

**Judge Phillips Takes Oath**

GASTONIA. — Former 27th Judicial District Solicitor Ralph Phillips of Gastonia was sworn in as judge of the district court Wednesday at the Gaston County Courthouse, with Chief District Judge Lewis Bulwinkle administering the oath of office.

Phillips defeated Judge John Mahoney of Shelby by some 1,300 votes in the district in the May 6 primary. Mahoney had resigned in April following investigation by the State Bureau of Investigation into accusations by two former deputies of the Cleveland County Sheriff's Department that the judge had illegally disposed of confiscated liquor and beer. While Mahoney carried Cleveland county, he trailed Phillips in Gaston and Lincoln counties.

Phillips had been unanimously recommended by the joint membership of the bar association of Gaston, Cleveland and Lincoln counties to fill the vacancy created by Mahoney's resignation in April. Gov. Scott, however, did not act on the recommendation. The vacancy in the district court remained until Phillips was sworn in.

plied evenly around the plants and incorporated with the soil. If you have strawy stable manure available you might reduce the 8-8-8 to 6 ounces and add a good fork-fill around each plant.

**Fair Extended To Nine Days**

The Cleveland County Fair, which has previously been a five-day event, will be extended to nine days this year, Oct. 6-14, according to E. L. Weathers, fair manager.

Also, ground work has begun for construction of a new barn which will result in a midway "at least one acre" longer than the old midway in order to "accommodate more super-rides," he said. He noted that parking facilities will be increased for "around 200 more cars."

Extension of the fair to nine days was done for two reasons, Weathers explained. "First because we're building and need every dollar we can get, and secondly for a 'rain insurance'."

He said the fair, which will begin on a Friday and end on a Saturday night, will open each day at noon except for one Sunday afternoon when the fair will open from 1 p. m. until 6:30 p. m.

The only activities to be held Sunday afternoon he noted, will be rides and exhibits and a gospel singing by area choirs from 2 p. m. to 4:30 p. m. in the grandstand. All Sunday charges will be the same as other days of the week, except the gospel singing, which will be free, Weathers said.

The new, steel barn will be 120 feet by 150 feet and "not a barn in the county will equal it," Weathers said. The barn is scheduled for completion Aug. 1.

**TAXPAYERS ASK IRS**

This column of questions and answers, on federal tax matters is provided by the local office of the U. S. Internal Revenue Service and is published as a public service to taxpayers. The column answers questions most frequently asked by taxpayers.

Q.—Were the filing requirements for 1972 estimated tax returns changed by the Revenue Act of 1971?

A.—Yes. Under this law, you must file a declaration of estimated income tax, Form 1040-ES, for 1972 if your estimated tax is \$100 or more and one of the following situations applies: Your estimated gross income for 1972 include more than \$500 in income not subject to withholding; or You are single, head of household, surviving spouse or married filing jointly but with only one spouse receiving wages and your estimated gross income exceeds \$10,000.

Q.—Can I have tax withheld on my pension?

A.—Yes. You may elect to have income tax withheld from the taxable portion of pensions and annuities paid over a period of more than one year by filling out a Form W-4P and submitting it to the payer. The amount to be withheld must be at least \$5 per month and the net annuity payment received may not be less than \$10. Forms W-4P are available at IRS offices.

Q.—What are the rules for deducting amounts I spent to fix up my old house before I sold it to buy a new one.

A.—Fixing-up expenses in a year not be deducted from income on an individual income tax return, nor are they deductible in determining the actual profit on the sale of the old residence. However, they are considered in determining the amount of gain on which tax is postponed under certain conditions on the sale or exchange of a residence. Just deduct fixing-up expenses from the amount realized on the sale and compare this figure with the cost of the new residence to find the amount on which tax is postponed.

Fixing-up expenses must also meet the following tests. They must:

- (1) Be for work performed during the 90-day period ending on the day the contract to sell was made (the contract to sell must have resulted in a completed sale);
  - (2) Be paid within 30 days after the date of the sale;
  - (3) Be otherwise nondeductible in computing taxable income; and
  - (4) Not be capital expenditures or improvements.
- For more on fixing-up expenses see IRS Publication 523, Tax Information on Selling Your Home. It's available free by dropping a postcard to your local IRS office.

Q.—I recently started working as a waiter. When do I have to

report tips to my employer for withholding purposes?

A.—You must give your employer a written report on or before the 10th day of each month in which you received cash tips of \$20 or more while working for him. You may use Form 4070, Employees' Tip Income Report, for this purpose. It's available at IRS offices.

Q.—Do you have a booklet that tells taxpayers what their rights are if they are audited?

A.—Yes, write your Internal Revenue district office for a free copy of IRS Publication 553, Audit of Returns, Appeal Rights and Claims for Refund.

**MUSIC CAMP OPENS**

The opening session of the Rotary Music Camp at "Wildcraes" near Little Switzerland will be held from June 11-17 with a concert set for Friday, June 16, at Spruce Pine Methodist church. A chorus of 55 voices from Carolina teenagers will present the concert.

**HOSPITALIZED**  
Rocky Martin, Kings Mountain Herald employee, entered Kings Mountain Hospital Tuesday for observation and treatment of a kidney ailment. He is a patient in Room 140.

Fort Worth was founded as a military post.

Arbor Day is observed in all states.

**Russell SECRET**

for  
**Insurance Commissioner**

Reasonable, responsible leadership to solve our insurance problems.

16 years experience as Deputy Insurance Commissioner.



Plant your future with us.

We've got a green thumb. The kind of green thumb that will make things grow. Our green thumb makes money grow. Your money. By putting your money to work with us, you will see how fast it can grow. Your money will earn a good return and always be safe—insured by an agency of the U.S. Government up to \$20,000. So plant a little green for your future now and watch our green thumb go to work for you.

**Kings Mountain**

Savings & Loan Association

P. O. BOX 746 KING'S MOUNTAIN, NORTH CAROLINA 28086

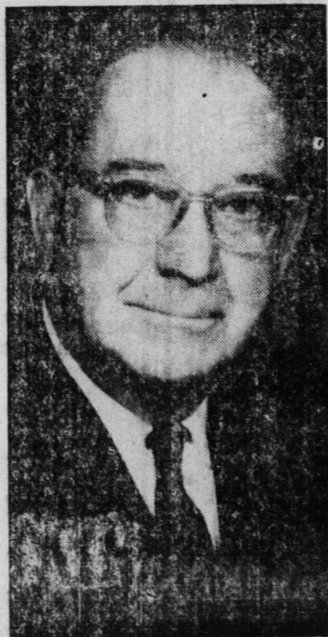
MEMBER FEDERAL SAVINGS AND LOAN INSURANCE CORPORATION  
WE'RE DOING A LOT FOR AMERICA. WE WANT TO DO MORE.

**Compare The Democratic Candidates For U. S. Senate**

	<b>SEN. JORDAN</b>	<b>REP. GALIFIANAKIS</b>
<b>Professional Background</b>	Textile and Business Executive	Lawyer
<b>Educational Service</b>	Trustee: Duke University Elon College American University	Assistant Professor, Business Law, Duke University
<b>Civic Service</b>	Chairman, Board of Trustees, Alamance County Hospital; Charter Member, N. C. Medical Care Commission; Member, N. C. Peace Officers Benefit and Retirement Commission.	—0—
<b>Democratic Party Offices</b>	Chairman, State Executive Committee, 1949-54; National Committeeman, 1954-58.	—0—
<b>Congressional Service</b>	More than 14 years in the U. S. Senate.	More than 5 years in the U. S. House of Representatives.
<b>Congressional Seniority</b>	19th ranking Democrat in the Senate.	House has no comparable ranking system.
<b>Congressional Committee and Sub-committee Chairmanships</b>	Chairman: Rules Committee; Sub-committee on Agricultural Production, Marketing and Stabilization of Prices; Sub-committee on Flood Control — Rivers and Harbors; Sub-committee on Printing; Sub-committee on Library; Sub-committee on Computer Services. Vice Chairman (Chairman alternate years): Joint Committee on Library; Joint Committee on Printing. Chairman of the Coordinating Committee for the James Madison Memorial Library of Congress.	—0—

**VOTE FOR  
B. EVERETT JORDAN  
DEMOCRATIC RUNOFF  
JUNE 3**

JORDAN FOR SENATE  
COMMITTEE  
AKERS MOORE  
CHAIRMAN



THE BOOT HAS GONE SOFT TO MATCH 70'S SOFT FABRICS. TENDER CALF IN BROWN SOFTIQUED OR BLACK. SIR WALTER

\$26.

**PLONK'S**