

Photo By Gary Stewart

**DO IT THIS WAY** — Tennis is fast becoming one of the most popular sports, and interest is at an all-time high in Kings Mountain. Becky Summitt, left, a KM school teacher and tennis instructor,

has been instructing over 40 youngsters and adults at the city recreation department this summer. Here she gives young Jane Hambricht of Grover some tips on how to improve her game.

## A's Make Playoffs

The Kings Mountain A's won their last two regular season games over the weekend to qualify for the Triple County League playoffs for the third straight year.

The A's whipped the Charlotte Hawks 8-1 Saturday and blanked Albemarle 9-0 on Sunday.

Robert Adams hurled Saturday's win and the A's got two hits each from Danny McDowell, Charles Jones and Rob- ble Moore.

Tony Tompkins hurled Sunday's victory and McDowell, Darrell Van Dyke, James Smith

and Charles Rhodes had two hits apiece.

The A's enter playoff action Saturday at 2 p.

### KMCC Lady Golfers

### Plan Scotch Foursome

KM Country Club women golfers will sponsor a Scotch Four- some Sunday afternoon with tee-off time at 5 p. m.

Reservations for supper at 7:30 p. m. should be made with Manager Jerry King by Saturday, said a spokesman.

m. at Harding High School against the Charlotte Mets. Either Bruce Hopper or Alan Lindsay will get the starting nod.

If the A's win, they'll play the following Friday against the winner of the Hoskins Giants-Town and Country Ford game and if they lose they'll play the following Thursday against the loser of that game.

Eight teams are entered in the playoffs, which are double-elimination.

## Johnson Helps Key Defense

# G-W Eyes Big Year

Putting some bite in the Bulldogs' bark will determine how much Gardner-Webb can improve upon last season's 6-5-0 record and fifth-place finish in the South Atlantic Conference (SAC-8).

Offensively, the Bulldogs made a lot of noise in '76, averaging 30 points and 416 yards per game. Defensively, the statistics favored the opposition, with Gardner-Webb yielding nearly 23 points and 38 yards. The results were exciting, but not always satisfying.

"Obviously defense is where we have got to improve the most," states G-W head coach Oval Jaynes. "We've spent a lot of time evaluating personnel and making adjustments."

Overall, Gardner-Webb has the size, experience and talent to become a definite SAC-8 contender. In fact, a pre-season vote by league coaches put the Bulldogs a close second to defending champion Elon. With the exception of freshman linebacker Alvin Sparks, all of the G-W starters are lettermen.

"We have good quality in our starters, and we should be much stronger physically because of our off-season weight program and the fact we're a couple years older," Jaynes says. "But the secret will be staying healthy. Depth could be a problem," he admits. "Much of our depth will come from freshmen and transfers, and it's hard to count on them early in the season."

Gardner-Webb's big plus is the quarterback duo of Dennis Stille and Glenn Robertson, a pair of juniors who totaled 1,000 each during 1976. Stille, the better runner, rushed for 445 yards and passed for 664 more for 1,109 yards. Robertson netted only 15 yards rushing but completed 56 of 117 passes for 1,006 yards and five TDs.

Halfbacks in the veer offense are seniors Johnny Walker and Po Rogers and junior Obbie Todd. Walker, twice voted the team's most outstanding back, gained 725 yards and scored nine times last year. Todd picked up 393 yards in 56 carries, a 7.0 average, and Rogers gained 312 yards in five games before moving to free safety for the balance of the season.

The wide receiver slots are two-deep with Elvin Webber and G. T. Johnson at end and Mark Morningstar and Marc Walker at flanker. Six of Morningstar's 18 receptions were for touchdowns, while Webber made 2 catches for 497 yards and three TDs. Marvin Oliver, a defensive end last year, is the likely starter at tight end.

Heading the offensive line are a pair of all-conference juniors, guard Jeff Carter and tackle Mark Classen. Senior Jim Furlough, the strongest player on the team, will be at right guard, and either Phil Wright or Bob Barnes will start at left tackle. Richard Mack is the incumbent at center.

Defensively, the ends will be seniors Monte Walker and Jeff Keene,

both injured in '76 — Keene for the season and Walker for the final six games. Walker was an All SAC-8 pick as a sophomore. Making up the interior will be Frankie Smith and Denis Thurman at tackles and Noel Wiseman at middle guard. Back up will come from Geno Walden, John Knight, Phil Wright, David Guthrie and Roby Kirby, all lettermen.

Mark Briggs, another all-conference player, returns at linebacker. He will be joined by Alvin Sparks, a 6-2, 220-pounder who played at Fork Union Academy last year. Behind them are lettermen Aubrey Gowans and David Howard.

In the secondary, the

strong safety will be senior Bill Salyers, the team's most outstanding defensive back last year. Junior Alvin Lee is set at free safety. One corner slot is filled by Chris Johnson, who made five interceptions and ALL-SAC-18 last year as a freshman. Lettermen Don Montgomery and Mike

Baria will wage a battle for the other corner position.

The kicking game is solid with the return of placekicker Mike Cox, who re-wrote the school's kicking records last year while earning all-conference honors. Mike Briggs will handle the punting for the third season.

GOOD YEAR

QUALITY RETREADS

ANY SIZE

\$12<sup>88</sup> PLUS F.E.T.



With Recappable Casing

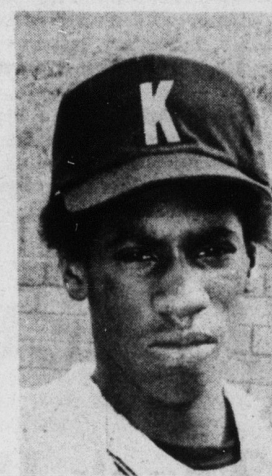
All Size 78 Series Retreads

33 Years Of Quality Retreading

CLARK TIRE & AUTO

407 S. Battleground Ave.

Kings Mountain, N. C. Phone 739-8456



CHRIS JOHNSON

FULTON'S

117 WEST MOUNTAIN ST.

BACK TO SCHOOL SPECIAL

ENTIRE STOCK OF SHOES BY

DEXTER 20% OFF

Dress And Casual Shoes For Guys And Gals

SHOES REGULAR \$26.00 TO \$30.00

NOW \$20.80 TO \$26.40



Over 18 styles to choose from for Guys and Gals. Dexter is one of the leading shoe companies today. Right on top of the styles. During August our entire stock is 20 percent off. (If we don't have the style or size you want we'll be happy to order it for you at these special prices. Check Eastridge or Shelby. We have the best prices!

GENERAL ELECTRIC

APPLIANCE SALE



VALUE \$222 TIME

3 DAYS ONLY!

ON THIS GE HEAVY DUTY WASHER

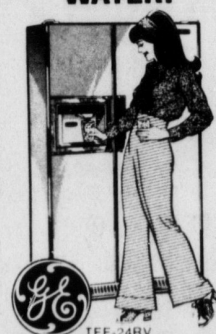
WITH Filter-Flt system traps lint.

Porcelain-enamel lid, top, wash basket and tub.

Heavy Duty GE Motor

Electrically tested quality

DELIVERS CRUSHED ICE, CUBES AND COLD WATER!



23.5 CU. FT. NO-FROST REFRIGERATOR-FREEZER

- Stores 10 lbs., about 260 cubes; automatic icemaker.
- 8.57 cu. ft. freezer with see-thru basket shelves.
- Power saver switch can help reduce cost of operation.
- Convertible meat conditioner.
- Adjustable Porta Bin door shelves.
- Adjustable glass shelves.

SAVE \$200 With Trade



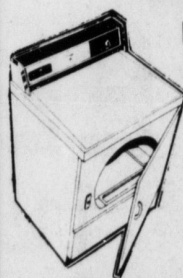
Two appliances in one... Double convenience! 13.6 CU. FT. REFRIGERATOR-FREEZER

- 3.79 cu. ft. freezer.
- Two Ice 'n Easy trays

Model TB-14SV

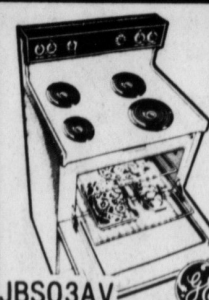
\$318 W/T

GENERAL ELECTRIC WASHER



HEAVY DUTY CAPACITY PERMA PRESS CYCLE DDE6200AV

\$189 W/T



30" WIDE GE RANGE

JBS03AV

\$222 W/T



WITH CLOCK AND TIMER

JBP26VAD

SAVE \$109



TIMMS

FURNITURE 909 GROVER ROAD