

# Local Schools Spend \$2,743,366 In Funds

Expenditures from the State Public School Fund totaled over \$816 million during the 1976-77 school year, according to figures compiled for the annual audit report of the State Public School Fund.

The total represented a 10.9 percent increase in spending over the 1976-77 school year.

The largest expenditure from the State Public Fund, a total of \$561,021,487.30 paid for instructional services, which included salaries of teachers, principals, supervisors and clerical assistants in schools as well as instructional supplies. Kings Mountain District Schools spent \$2,743,366.21 from the State Public School Fund for instructional services.

mechanics, garage equipment, contract transportation for handicapped children, bus replacements, as well as items needed for regular maintenance such as gas, oil, anti-freeze, tires, repair parts, batteries and license plates.

Another major expenditure paid for operation of school facilities. School officials spent a statewide total of \$35,332,679.37 for janitors, wages and supplies, salary for maintenance personnel, heating fuel, water, lights, power and telephones. Locally, the Schools spent \$129,192 to maintain local school facilities.

A total statewide expenditure of \$66,980,712.78 was expended for other instructional services. Local Schools spent \$1,960,310.57 for that item. State funds were also used for additional instructional services, the major portion of which paid for the kindergarten program — \$53,332,262.01. Other instructional services included physical education, school psychologists and other teacher support personnel in the school system.

to \$9,297,063.33 and paid for the general control of the schools. That item included salaries of superintendents and assistant superintendents and general office expenses. Kings Mountain Schools spent \$35,155.15 for general control of local schools.

The audit report of the State Public School Fund included only State contributions to the operation of North Carolina's public schools. It does not include federal or local tax money which a local school unit may use to supplement the State contribution.

The smallest expenditure by category from the State Public School Fund amounted

## McGill, Southwell On Fine Arts Tour

An additional \$98,083,606.49 was spent for employee benefits, the second largest expenditure from the Fund. The local schools spent \$334,287.14 for employee benefits, which included hospitalization insurance, social security, retirement, pupil reimbursement for injuries and compensation for school employees. Retirement and social security costs amounted to over \$85 million of the total State expenditure.

The cost of transporting children to and from school amounted to \$45,584,732.56 statewide. Kings Mountain schools spent no funds on transportation of local school children. Transportation costs included such items as salaries of bus drivers and

Two Erskine College students from Kings Mountain will participate in a fine arts study tour in New York beginning Thursday.

The local students are John McGill, son of Dr. and Mrs. John C. McGill, 703 Hillside Dr., and Steve Southwell, son of Mr. and Mrs. B. O. Southwell, 804 Williams St.

McGill, a senior and Southwell, a sophomore, will be among 29 students leaving the Greenville-Spartanburg, S. C. Airport this Thursday for the 11-day fine arts study tour.

While in New York the students will attend per-

formances of the New York Philharmonic Orchestra, Metropolitan Opera, the State Ballet and six Broadway plays.

Among the plays will be the award-winning "Amie," Liza Minelli's new hit, "The Act," and a revival of "The King and I" starring Yul Brynner in the role that brought him stardom.

The students will see Olympic gold medalist Dorothy Hamill in the Ice Capades, have an all-day tour of New York City, and tour the United Nations and Lincoln Center. They will visit the

Museum of Modern Art, the Metropolitan Museum of Art, the Guggenheim Museum of Art, and the Frick Museum.

A banquet at Mama Leone's will be a special bonus of the trip. Prior to departure, the class is studying four hours per day on the Erskine campus. A week of evaluation will follow the tour.

This is one of 60 special one-month classes in Erskine's January Interim Term.

## Dodge Presents Program

Robert Dodge, Kings Mountain Police Juvenile Officer, will present a program tonight on Human Abuse at the KM Lions Club dinner meeting.

The club meets tonight at 7 at Kings Mountain Inn.

The Lions clubbers have voted to participate in the county-wide citizen of the year award for 1978 and members are asked to submit nominations at tonight's meeting.

Lions George Sherill, Bill Bates and C. A. Allison plan to attend the Lions Mid-Winter Convention in Charlotte Saturday.

## Have You Seen Frecka?



REWARD OFFERED — Frecka, a 10-year-old German Shepherd pet of Mary and Billy Mauney, has been missing from home since Sunday and the Mauneys are advertising a \$100 reward for her return. The dog is pictured in a 1970 photo, above, with Rowland Turner, son-in-law of the Mauneys.

Mr. and Mrs. W. K. Mauney, Jr. of East Gold St. are advertising a \$100 reward for the return of their 10-year-old German Shepherd which answers to the name of Frecka.

"Dogmappers" apparently took the dog from the garage of the Mauney home sometime Sunday.

The pet, who is almost blind and requires eyedrops daily, has never wandered from the house and yard, said Mrs. Mauney.

The pet is black and tan and is described as "very gentle" and likes children.

Mrs. Mauney said that no question will be asked of the person returning the dog.

"All we want is our dog back," said Mrs. Mauney, who said the animal has been a member of the family for a longtime.



Some say floating tea leaves in a cup mean a visitor is coming.

## Drivers Education Program Updated

According to State Superintendent Craig Phillips an estimated 111,856 public school students will be taught this year in driver education programs.

These students will be instructed by some 1,200 part-year and full-time certified drivers education teachers across the state.

In a report published by the state education agency, an estimated \$11,651,745 will be allocated to the 145 local education agencies during the 1977-78 school year.

The initial allotment assigned to each local unit the bulk of its operating funds for the year. The mid-year revision adjusted funding to fit revised numbers of students to be taught, actual numbers and salary ratings of teachers employed and current year rates of cost for such items as car operations, insurance, instructional materials, and equipment. The driver education program in North Carolina is com-

pletely financed by the \$3 motor vehicle registration fee.

The State Board of Education approved these mid-year revisions of driver education budgets for fiscal year 1977-78 at its January meeting.

Kings Mountain District Schools received an initial allocation of \$27,922 on July 7, 1977, and will be allotted \$32,207 for a total amount of \$60,129 for the remainder of 1977-78. An estimated 610 students will be enrolled in driver education programs during 1977-78 in Kings Mountain.

**Jonas Bell Promoted**

SUMTER, S. C. — The U. S. Air Force has promoted Jonas N. R. Bell, son of Mr. and Mrs. Jonas N. R. Bell of Rt. 4, Kings Mountain, to the rank of airman first class.

Airman Bell is serving at Shaw AFB, S. C., as a jet engine mechanic.

PRICES GOOD THRU 1/11/78 ... QUANTITY RIGHTS RESERVED... NONE SOLD TO DEALERS

# Lowes Foods

Home of the never ending sale.

West Gate Plaza—Shelby Road Kings Mountain, North Carolina

WE WELCOME U.S.A. FOOD STAMP SHOPPERS

VALLEYDALE 4-8 LB. AVG.

SMOKED PICNIC LB.

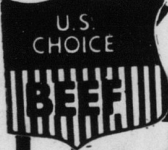
57¢



U.S. CHOICE 9-11 LB. AVG. whole RIB EYE

\$2.49 LB.

VALLEYDALE SLICED SMOKED PICNIC . . . . . LB. 67¢  
VALLEYDALE 1/2 OR 1/4 SLICED SMOKED PICNIC . . . . . LB. 75¢  
FRESH PORK STEAK. LB. \$1.09



U.S. CHOICE RIBEYE STEAK

\$2.99 LB.

TURKEY PARTS

BREAST . . . . . LB. \$1.19  
THIGHS . . . . . LB. 79¢  
LEGS . . . . . LB. 69¢  
WINGS . . . . . LB. 39¢

ONE OF YOUR BEST MEAT VALUES!

FRESH PORK SHLDR. ROAST . . LB. 99¢  
SLICED BEEF LIVER . . . . . LB. 59¢  
VALLEYDALE SLICED BOLOGNA. . . . . LB. 89¢



4 ROLL PACK DELTA BATHROOM TISSUE

58¢

OPEN SUNDAY 12-7P.M.

150 COUNT DELTA FACIAL TISSUE 39¢

21 OZ. COMET LIQUID CLEANSER . . . . . 65¢  
6 ROLL PACK DELTA BATHROOM TISSUE . . . . . \$1.05

42 OZ. PUREX HEAVY DUTY LAUNDRY DETERGENT . . . . . 79¢  
12 OZ. KELLOGG'S CORN FLAKES . . . . . 48¢  
TWIN PACK TOM'S POTATO CHIPS . . . . . 59¢

GARDEN FRESH YELLOW CORN 5 EARS LB.

79¢

GARDEN FRESH SALAD TOMATOES

39¢

## Flower & Gift Shop

- ★ Weddings
- ★ Anniversaries
- ★ Funerals
- ★ Special Occasions
- ★ Gifts

739-6256

212 East King Street

Dovie Laughridge Owner

