

Plonk Property Goes To Park

Turn To Page 3-A

passed down to heirs with the M.L. Plonk families owning 33 and one third percent at the time of the sale, the John O. Plonk families owning 41 percent and W.L. Plonk families owning the remaining land.

The heirs of the three Plonk pioneers families are J. Caswell Taylor, Rufus Grier Plonk, Jr., Elizabeth Plonk Mercer, James H. Plonk, Austin A. Lackey, Mary Anne

Harmon Hall, Kathleen M. Plonk, Virginia Plonk Morris, Nancy Plonk Sutton, William L. Plonk, Rachel Plonk Gladden, Martha A. Plonk, Douglas Plonk McElwee, Dorothy Plonk Lewis, Maude Plonk Patterson, John Oates Plonk, Jr., Mary Plonk Weaver, John S. Rhodes, Zeb O. Plonk, Ferguson R. Plonk, Hal S. Plonk, Margaret Plonk Isley, Wray A. Plonk, George W. Plonk, Clarence S. Plonk, Clara Plonk Politis, John

Butler Plonk, William S. Patterson, trustee, and Estate of Ellen Patterson Plonk.

The land sale has been in the negotiations stage for several years with Senator Helen Rhyne Marvin of Gastonia as a go-between, said Plonk.

"We could have gotten more money but the countryside would have been desecrated by tearing down the pinnacle," said Plonk, who said a kyanite mine had operated on Henry's Knob for 14 years. "If they had ever got to mining that area, instead of a mountain, there would have been a hole in the ground. That pinnacle is just a big outcropping of kyanite. The family didn't want to see the area desecrated by appraisers put a pretty big price tag on it because of the mineral deposits," he said. "The families got together and decided to make a sizeable gift," he added.

Officials of the State Parks Division of the Department of Natural Resources and Community Development and private appraisers retained by the Plonk heirs estimated the value of the property and negotiations followed.

"People have talked to me for years and years about how great it would be if we could have Kings Pinnacle to complete the park area and now it's been accomplished," said Senator Marvin. "Crowders Mountain is a park that draws a large number of people from around the state and out-of-state and this will make it an even more valuable property," she said.

Officials In Raleigh

City and Gaston City and county officials are in Raleigh today conferring with Environmental Management officials on a joint application for a regional wastewater treatment plant.

Mayor John Henry Moss, Gaston County Manager Phil Hinely, Sam Wilkins of the City of Gastonia, Gastonia Mayor Harry Connors and David Beam, chairman of the Gaston County Board of Commissioners, had an appointment at 10:45 a.m. with Divi-

sion of Environmental Management officials concerning application for a Crowders Creek basin waste water treatment facility all three boards have approved.

Mayor Moss said the new facility is expected to have a treatment capacity of eight million gallons a day. He said the possibility of getting funding is enhanced by the joint effort and was a major step in meeting water and sewer needs of a large are of Kings Mountain and Gaston County.

City To Protest Distribution

Kings Mountain stands to lose \$234,370.72 annually if the county board of commissioners approves a formula change in sales tax distribution, according to Mayor John Moss.

Moss said he plans to present a resolution protesting the formula change to the county board at its 10 a.m. meeting Monday in Shelby.

county are protesting the change and have adopted similar resolutions, Moss said.

Moss said the method of distribution presently used in Cleveland County is the same used in the majority of counties of North Carolina and is recognized as the most equitable means of sharing sales tax revenue among governmental units.

Downtown
Kings
Mountain



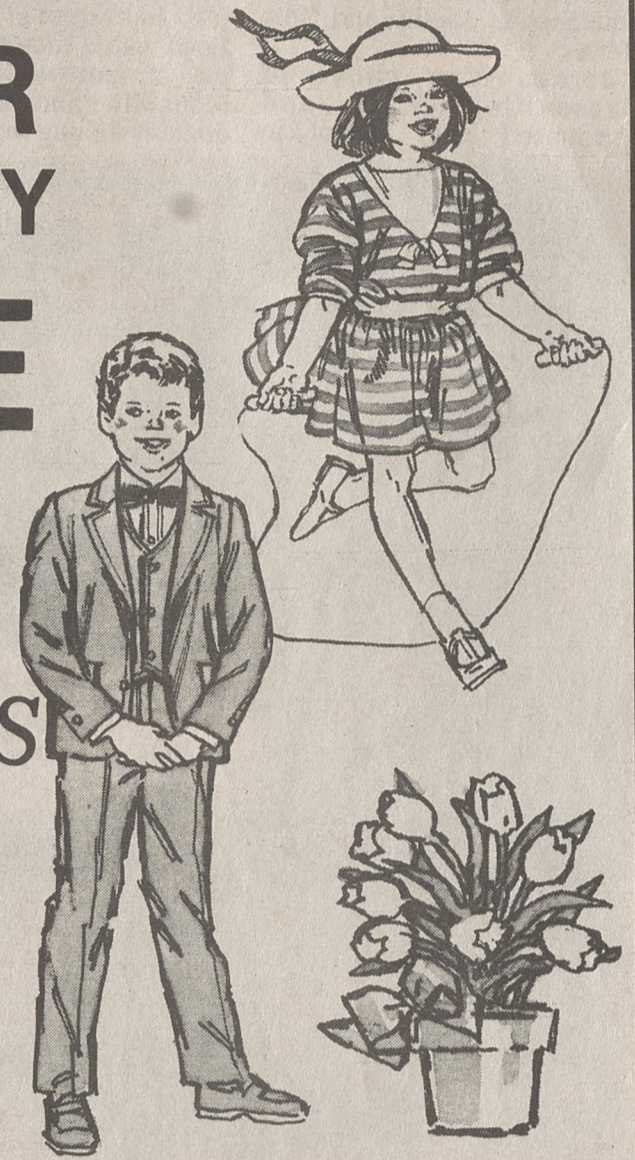
Downtown
Kings
Mountain

**EASTER
LAY-A-WAY
SALE
LITTLE
GIRLS
DRESSES**

Sizes 4 To 6X, 7 To 14

**BOYS
SUITS**

Months And Toddlers



Belk Stevens
CLEVELAND MALL

ATHLETIC SHOE SALE

SALE ENDS SUNDAY

Reebok 
Because life is not a spectator sport.™

Entire Stock

25% Off

Boys • Girls • Ladies • Mens

Reg. 25.00 to 55.00

Now 18⁷⁵ to 41²⁵

