

Action Group Forms

From Page 1-A

quences will be," Suber said. Maoney and Suber's original letter, dated August 11, was mailed to 300 businesses, Suber said. None were mailed to individuals.

The letter began "recent actions by the current City Council of Kings Mountain have made the upcoming elections in October of major importance to everyone who lives or operates a business in and around our city. It is for this reason that all of us should concern ourselves with who we put into office in the near future. We must make sure that the candidates who are most qualified for the job and who will vote their convictions are elected to these most important positions of City Commissioner and Mayor. We must stand up as a group and become politically involved in order to insure the future of our community and for this city to be able to compete effectively with surrounding cities."

The letter went on to request tax deductible contributions or a vote of confidence which would be repaid "tenfold in the future with the continued growth and prosperity of our city."

Suber said the group has in mind some candidates it would like to endorse but would not do so without the candidates' permission. "We have some candidates in mind that we think would be good," he said, "but whether or not they're willing for us to publicly endorse them, I don't know."

Suber said he began thinking of forming such a group after the recent ABC campaign when he attempted to speak to the city board over a satellite annexation issue and was told by a commissioner that he "lived outside the city and had no business addressing the board."

"I may not live in the city limits, but I own a business in Kings Mountain that pays city taxes," he said. "Kings Mountain is my hometown. That's not the way people are supposed to be treated. Whether they live in the city or not they should have a chance to voice their opinion. That's when I decided it was time for me to get involved."

Bethware Fair Set At School

From Page 1-A

Charles Scism will serve as manager of the fair and Stokes Wright will be exhibit manager. Glenn Hicks will serve as grounds superintendent and John Grant and James Grant will be in charge of parking.

Dale Vollbracht, Ralph Arrowood, Roger Goforth, and Charles Putnam will be in charge of tickets and Jack Harmon will be superintendent of the commercial booths. Marshall Jones and Charles Herndon will be building superintendents and Charles Dover and Jim Yarbro will be in charge of the concession stand.

Yarbro, Raeford White and Glenn Hicks will be in charge of rides and Cameron Ware will be in charge of the agriculture department and will be assisted by Myers Hambright. Roger Goforth will direct the farm and machinery department and Mrs. Hilda Kiser will be director of school exhibits.

The fair's women's department will be in charge of various entries, including canned fruits and vegetables, jams, preserves, jellies, pickles, meats, pantry and dairy supplies, household arts, crafts and hobbies, and flowers.

Fair Queen is Jaime Lynn Mullinax, fifth grader at Bethware and daughter of Mr. and Mrs. Bill Mullinax.



GROUND BREAKING - Alfred H. Grava, president of Sheller-Globe, Governor Jim Martin, Mayor John Moss, and Cleveland County Commission chairman Josh Hinnant, left to right, break ground Monday at the site of the new Sheller-Globe truck bed manufacturing plant in Grover.

Sheller-Globe Breaks Ground

From Page 1-A

away to recruit someone else. We continue to work with them."

Hinnant pointed out that Sheller-Globe chose Cleveland County over 13 other sites, not only because of its close proximity to I-85 and the Mack Truck plant in Winnsboro, but because of philosophies the county and company held in common.

"From the first time we met with them, I told myself 'we're going to land this one' because the chemistry was there," he said. "They're interested in the same thing Cleveland County is interested in. We did a good selling job of getting them here, and the citizens of Cleveland County will make them feel sure they made the right decision."

"It's seldom a city the size of Kings Mountain has the distinction of being selected by such an outstanding international company, as a community that meets the requirements of a project that requires such high technological standards," noted Mayor Moss. He said the company will allow local citizens to "achieve meaningful goals and engage in quality life for themselves and their families."

"Sheller-Globe is offering the kind of challenge Cleveland County citizens love," he said. "With their sophisticated technology and production and marketing abilities, and our dedication to hard work and self respect, I predict a most successful business venture that will provide satisfaction to everyone involved. We appreciate their confidence in this area, and as a people, we are determined to reward their trust."

FRAMES

CUSTOM & READY MADE

Quality frames for less—largest selection!

Limited edition prints & decorator prints

LEM LYNCH Photography and Frames

317 S. Lafayette St., 482-6626

REWARD

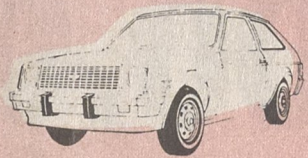
For information leading to the arrest of the person or persons that stole the Ross-Temp Ice Making Machine at Dennis' Pack & Go on August 18th.

CALL 629-2111

AT LAST!
A CAR PAYMENT
THAT WON'T LEAVE
YOUR BUDGET
IN THE
RED

NO
PAYMENTS
TILL
JANUARY
1988*

1983 CHEVETTE



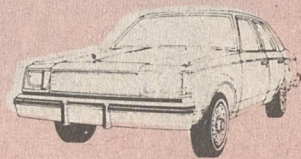
Stock No. P319A
-C.S.P. 30 @ 89.88
-APR 13.25 F.C.
420.00 T.O.P. 2670.00.
3250.00, 1000.00 down
cash or trade. Does
not include T.T.L.F.

\$89⁸⁸

Month

1981 BUICK CENTURY SEDAN

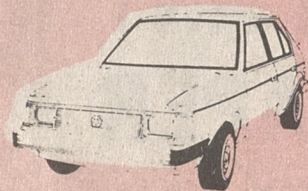
Stock No. G501B - 2.4 @
119.80 - APR 13.25 - F.C.
119.80 T.O.P. 2875.20. CSP
3500. 1000.00 down cash or
trade. Does not include
T.T.L.F.



\$119⁸⁰

Month

1986 DODGE CHARGER



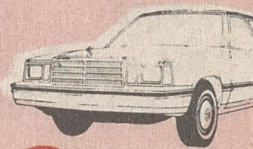
Stock No. P324A - 54 @
129.68. A.P.R. / 13.25 - F.C.
1777.72 T.O.P. 7002.72. CSP
6225. 1000.00 down cash or
trade. Does not include
T.T.L.F.

\$129⁶⁸

Month

1983 PLYMOUTH RELIANT WAGON

Stock No. P428A - 30 @ 148.33.
C.S.P. 4750.00. A.P.R. 13.25.
F.C. 699.90. T.O.P. 4449.90.
\$1000.00 down cash or trade.
Does not include T.T.L.F.



\$148³³

Month

Includes
90 Day
3000
Mile
Warranty

ROGERS

PONTIAC // CADILLAC // BUICK // GMC TRUCKS
SHELBY, 487-6364 • 208 W. DIXON BLVD. • HWY. 74 BY-PASS • CHARLOTTE, 334-2633

*On Selected Models - Payments Can't Exceed \$200 Per Mo. Amount Financed Can't Exceed \$8,000