

SCHOOL Lunch Menu

ELEMENTARY SCHOOL

Mon., Feb. 11
Macaroni and Cheese
Peas and Carrots
Chocolate Cake w-Icing
Rolls
Milk
Tues., Feb. 12
Vegetable Soup
Peanut Butter Sandwich
Pear Half (or Peach Half)
Cake Square w-Icing
Milk
Wed., Feb. 13
Creamed Turkey over Rice
Mixed Vegetables
Peach Cobbler
Rolls
Milk
Thurs., Feb. 14
Hot Dog w-Chili
French Fries
Cole Slaw
Cake Square w-Icing
Milk
Fri., Feb. 15
Fried Chicken
Creamed Potatoes w-Gravy
Green Beans
Pear Half
Rolls
Milk

JR. SR. HIGH

Mon., Feb. 11
Choice: Macaroni & Cheese
Fishwich w-Tartar Sauce
Peas & Carrots
Apple Cobbler
Rolls
Milk
Tues., Feb. 12
Vegetable Soup
Grilled Cheese Sandwich
Pear Half (or Peach Half)
Cake Square w-Icing
Milk
Wed., Feb. 13
Choice: Creamed Turkey over Rice
Turkey, Lettuce and Tomato Sandwich
Mixed Vegetables
Peach Cobbler
Rolls
Milk
Thurs., Feb. 14
Choice: Hot Dog w-Chili
BBQ
French Fries
Cole Slaw
Cake Square w-Icing
Milk
Fri., Feb. 15
Fried Chicken
Creamed Potatoes w-Gravy
Green Beans
Pear Half
Rolls
Milk

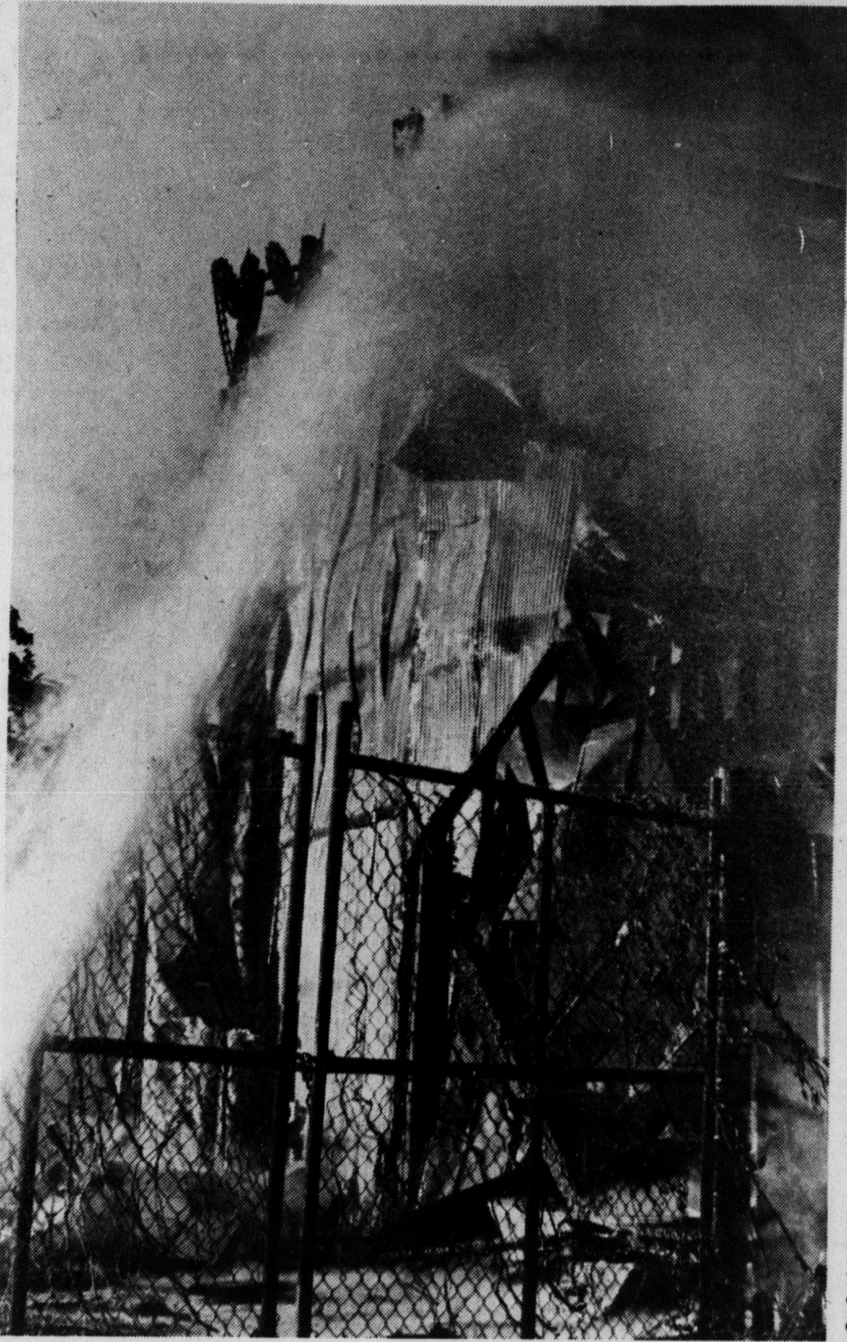


Photo by Jay Ashley

POUR IT ON - A fireman's-eye view of the fire that broke out in the old Kings Mountain ice house yesterday is seen above. The fire was reported around 5:30 p.m. Tuesday and firemen battled the blaze for several hours before bringing it under control. Fire chief, Gene Tignor said losses were heavy to the Lawrence Patrick-owned textile operation.

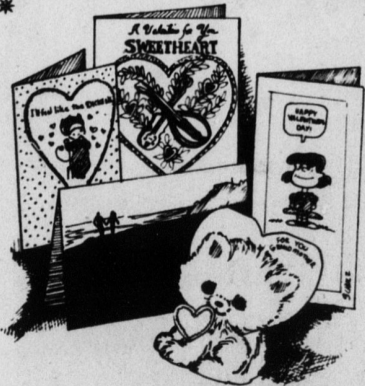
In Their Last Meeting, The City Commissioners:

- approved a tax refund of \$173.51 to Commercial Credit Industries Corporation located on Industrial Road outside the city limit. Mayor Moss said the business had been billed inadvertently for city taxes when in fact they were located in Gaston County.
- held a public hearing and voted to annex a portion of land to the city. The request was made by Garrison and Rachel Goforth.
- MORE COWS**
By 1980, the U.S. beef cow population is expected to be around 46 million head, compared to 37 million in 1970. Nearly three-fourths of the growth is expected to come in the Southeast, Northern Plains and Corn Belt.
- AIR-CURED**
Air cured tobacco is so-called because it is cured under natural atmospheric conditions, usually without the use of supplementary heat, except to prevent pole-rot, house-burn or barn-burn in damp weather.
- voted to advertise for a public hearing on the matter of annexing property located on the north side of US 74 east owned by George B. Nalley and wife, Anita.
- granted vacation pay to city employees in lieu of earned vacation not taken during vacation period. Mayor Moss said five or six employees worked during the vacation period.
- appointed Brooks Tate as the seventh member of the Kings Mountain Lake Authority.
- voted to advertise for bids for cathodic protection of the city's natural gas system.
- voted to advertise for bids on a back up lift station.
- voted to check into the feasibility of repairing the existing street sweeper and advertise for bids on a new unit in the case the old unit cannot be repaired.

Pot Bust Made

Roger Carl McFarland, 16, of Shelby Rd. in Kings Mountain was arrested Saturday night and charged with simple possession of marijuana. According to the report, Lt. Johnny Belk and Ptl. Joe King had stopped McFarland's T-Bird on Battleground Ave. near the A & P Store for a traffic check around 8:30 p.m. King said Lt. Belk was getting out of the patrol car approaching the T-Bird when a bag was thrown from McFarland's auto. Ptl. King said the bag contained around 12 grams of marijuana. McFarland was freed on \$100 bond and trial date is set for Feb. 21.

Ambassador Help guide Cupid's arrow



Ambassador Valentines for Thursday, Feb. 14, are the "on target" way to let someone know you care. So shop early for all the many kinds of Valentines you need.

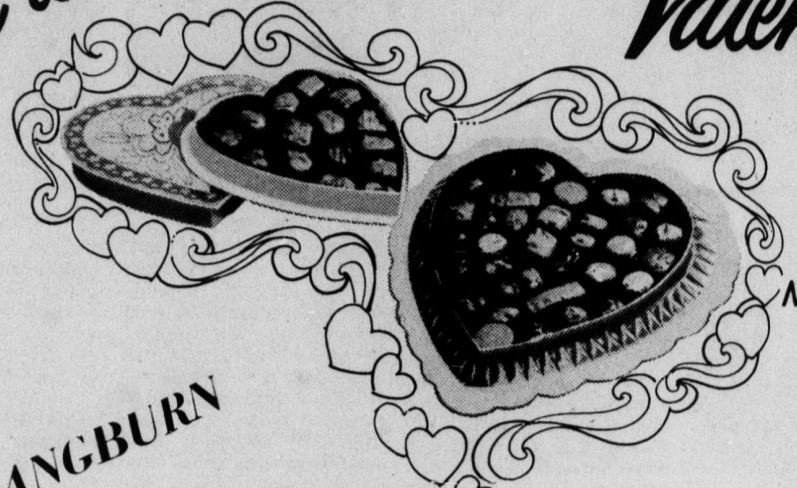
Kings Mountain Drug
Downtown Kings Mountain

Wade Ford wishes to congratulate



TIM GLADDEN
on his selection as salesman of the month for JANUARY
Wade wishes to thank all of TIMS' friends for seeing Wade before they traded.

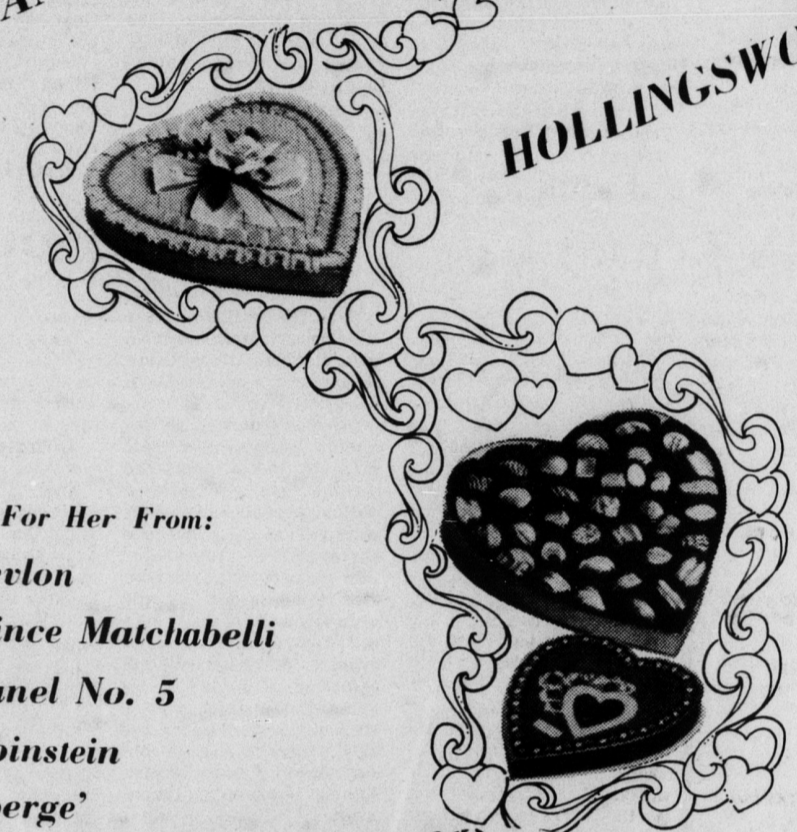
how sweet it is... **CANDY** for your Valentine



FROM KINGS MOUNTAIN DRUG

PANGBURN

HOLLINGSWORTH



Also For Her From:

- Revlon
- Prince Matchabelli
- Chanel No. 5
- Rubinstein
- Faberge'

KINGS MOUNTAIN DRUG CO.

WE GIVE YOU SERVICE

PHONE 739-2571 KINGS MOUNTAIN, N. C.



What wears well with pants or skirts and goes to morning meetings and night time movies ... from breakfast to dinner and all those other things in between ... and still looks great and still feels super ... and comes in white, navy, camel or shiny black? You guessed it! ...

YOUR A.M.-P.M. COMPANION JUST \$14.95



DOWNTOWN KINGS MOUNTAIN