

DEATHS

MRS. ALLEN

Funeral services for Mrs. Pearl Shuford Allen, 69, of Blacksburg, S.C., were conducted from First Baptist Church of Blacksburg, S.C. Thursday.

She was mother of Jack Allen of Grover and sister of Bryan Shuford and Mrs. Mattie Ponder of Grover.

Mrs. Allen, wife of Baxter Lee Allen, died Tuesday at 8:30 p.m. in Hawthorne Nursing Center in Charlotte. She was a native of Cleveland County, retired textile worker, and a member of First Baptist Church of Blacksburg, S.C.

Also surviving are two sons, Bobby Allen of Mount Holly, Lawrence Allen of Blacksburg, and Joe Allen of Greenwood, S.C.; two brothers, Joe Shuford of Arlington, Va., Ray Shuford of Shelby; two half-brothers, Bill Shuford of Augusta, Ga. and Jesse Shuford of Richmond, Va.; two sisters, Mrs. Sally Hall of Greensboro and Mrs. Georgia Allen of Shelby; 12 grandchildren and four great-grandchildren.

Gordon's Funeral Home of Blacksburg, S.C. was in charge of arrangements.

GRADY L. CHANEY

Services were conducted at 3 p.m. Saturday for Grady Lee Chaney at United Baptist Church of Gastonia by the Rev. Andy Strain and burial was in Mountain Rest Cemetery. Chaney, 59, of 302 Phifer Rd., Kings Mountain, died Wednesday at his home. A retired employe of United Spinners of Lowell, he was formerly with Radio Station WKMT, Kings Mountain. He was the son of the late Rev. and Mrs. Robert Gaddie Chaney.

Surviving are his widow, Mrs. Lucy Wilson Chaney; one son, Staff Sgt. Joey E. Chaney, U.S. Army, Korea; two daughters, Mrs. Brenda Owenby of Belmont and Mrs. Diana Bowlin of Bessemer City; three brothers, Jack Chaney of Kings Mountain, Johnny Chaney of Cherryville and Robert Chaney of Stanley; seven sisters, Mrs. Lucille Gladden, Mrs. Dot Phillips, Mrs. Sue Rhea, Mrs. Peggy Childers, Mrs. Loretta Owens and Mrs. Sherry Short, of Kings Mountain, and Mrs. Edith Milwood of Bessemer City. Harris Funeral Home had charge of arrangements.

MRS. LEE CASH

Services were conducted Saturday at 11 a.m. for Mrs. Lee Robinson Cash at Kings Mountain Baptist Church by the Rev. J. C. Goare and burial was in Mountain Rest Cemetery.

Mrs. Cash, 77, of York Rd., Kings Mountain, died Thursday at Kings Mountain Hospital following a brief illness. The daughter of the late George Henry and Minnie Adcock Robinson, she was a member of Kings Mountain Baptist Church, Open Gate Garden Club and the Morning Circle.

Survivors are her husband, Charles Edward Cash; one daughter, Helen Cash Davis of Asheboro; three grandchildren; and four great-grandchildren. Harris Funeral Home had charge of the arrangements.

REVIVAL

Revival services are underway at the Holiness Christian Mission, 215 Blanton St., Kings Mountain.

The Rev. Tony Cox and family present the message and special singing services nightly at 7 o'clock. The public is invited to attend these services.

Now presenting an exclusive offer on beautiful new **Abingdon China**

Now you can collect a beautiful set of china through our exclusive offer. Build a complete service for eight, twelve etc. on one convenient, low-cost plan. Abingdon will add grace and elegance to your table for years to come.

ONLY 49¢

PER PLACE SETTING PIECE With each \$5.00 Purchase.

Each week a different place setting piece will be featured at this special price and purchase requirement. Buy as many pieces as you like.

Matching accessory pieces are also available to complete your collection. Each accessory is available throughout the entire program with no purchase requirement!



Matching accessories to complete your collection include:

- Luncheon Plates (2)
- Dinner Soup Bowls (2)
- Salad Plates (2)
- Cereal/Soup Bowls (2)
- Gravy Boat w/Stand
- Sugar Bowl w/Cover
- Creamer
- Oral Serving Bowl
- Round Serving Bowl
- Butter Dish w/Cover
- Salt & Pepper Casserole w/Cover
- Beverage Server
- Footed Mugs (2)

Feature item of-the-Week
BEAUTIFUL ABINGDON FINE CHINA
DINNER PLATES
EACH **49¢**
WITH EACH \$5.00 PURCHASE



40-Piece Service for Eight only \$1960.

Dinner Plate	Cup	Saucer	Bread & Butter	Dessert Dish
FIRST SIXTH ELEVENTH WEEK	SECOND SEVENTH TWELFTH WEEK	THIRD EIGHTH THIRTEENTH WEEK	FOURTH NINTH FOURTEENTH WEEK	FIFTH TENTH FIFTEENTH WEEK
49¢	49¢	49¢	49¢	49¢
EACH With each \$5.00 purchase	EACH With each \$5.00 purchase	EACH With each \$5.00 purchase	EACH With each \$5.00 purchase	EACH With each \$5.00 purchase



the good food starts here.

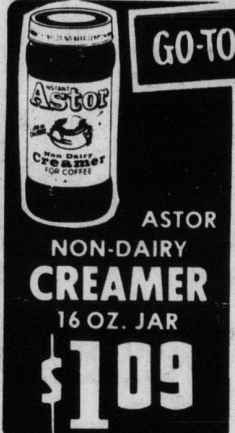
FOOD STAMPS GO FURTHER AT WINN-DIXIE

COPYRIGHT 1979 WINN-DIXIE CHARLOTTE, INC. QUANTITY RIGHTS RESERVED... PRICES GOOD THRU WEDNESDAY JULY 11, 1979.



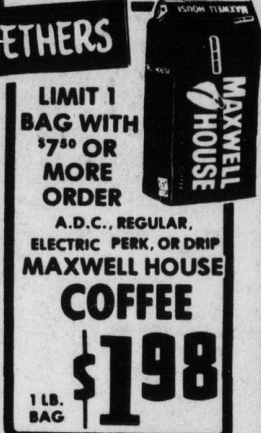
THRIFTY MAID SUGAR

5 66¢
LB. BAG
LIMIT 1 WITH \$7.50 OR MORE FOOD ORDER



GO-TOGETHERS

ASTOR NON-DAIRY CREAMER 16 OZ. JAR \$1.09



LIMIT 1 BAG WITH \$7.00 OR MORE ORDER
A.D.C., REGULAR, ELECTRIC PERK, OR DRIP
MAXWELL HOUSE COFFEE 1 LB. BAG \$1.98



BEECHNUT BABY FOOD 4 1/2 OZ. JAR 18¢

DEEP SOUTH SMOOTH OR CRUNCHY P'NUT BUTTER 40 OZ. JAR \$1.99
DELAMONTE FRUIT COCKTAIL... 2 17 OZ. CANS \$1.00
TROPICAL GRAPE JELLY 2 LB. JAR 89¢
THRIFTY MAID CORNED BEEF 12 OZ. CAN 99¢
ASTOR LIMIT 1 WITH \$7.00 OR MORE FOOD ORDER
COOKING OIL 48 OZ. BOTTLE \$1.59

SIMILAC OR ENFAMIL READY TO FEED REG. OR WITH IRON FULL CASE OF 6 ONLY \$5.94
BABY FORMULAS... 32 OZ. CAN 99¢
PAMPERS EXTRA ABSORBENT DISPOSABLE DIAPERS... 60 CT. PKG. \$6.89
GREEN GIANT NIBLETS CORN 12 OZ. A 79¢
ARROW BLUE, WHITE, COLD WATER, OR NO PHOSPHATE DETERGENT... 49 OZ. BOX 99¢

HARVEST FRESH

HARVEST FRESH S.C. PEACHES 29¢
HARVEST FRESH SWEET WESTERN PLUMS... 49¢
HARVEST FRESH WASHINGTON STATE BING CHERRIES... 79¢
HARVEST FRESH SEEDLESS WHITE GRAPES... 79¢

FROZEN FOODS

FREEZER QUEEN DINNERS \$1.19
• SALISBURY STEAK
• SLICED TURKEY & GRAVY
• CHARBROILED BEEF PATTIES WITH MUSHROOMS
• MAN-SIZE BEEF PATTIES
• TURKEY CROQUETTES
MORTON BEEF, CHICKEN, OR TURKEY POT PIES... 4 8 OZ. PKGS. \$1.00
FREEZER QUEEN CHICKEN ALA KING, SALISBURY STEAK, TURKEY WITH GRAVY, OR SLICED BEEF WITH GRAVY
BOIL-IN-BAGS 4 5 OZ. PKGS. \$1.00
SUPERBRAND ICE CREAM BARS OR ICE CREAM SANDWICHES... 12 CT. PKG. 98¢



HICKORY SWEET SLICED BACON

2 LB. PKG. \$1.98

99¢
LB. PKG.

HORMEL SLICED BACON 1 LB. PKG. \$1.39
HORMEL CHOPPED HAM 4 OZ. PKG. 99¢
HORMEL ALL VARIETIES COOKED HAM 4 OZ. PKG. 99¢

OSCAR MAYER ALL VARIETIES LEAN 'N TASTY BREAKFAST STRIPS... 12 OZ. PKG. \$1.49
OSCAR MAYER ALL VARIETIES SLICED BOLOGNA... 8 OZ. PKG. 99¢
SHULLS FRESH SAUSAGE PATTIES... 10 OZ. PKG. \$1.39

SHULLS FRESH SAUSAGE LINKS... 12 OZ. PKG. \$1.69
SHULLS FRESH H.C. LINK SAUSAGE... 12 OZ. PKG. \$1.69
W-D BRAND U.S. CHOICE RIB EYE ROAST 15 LB. \$3.88

PINKY PIG BRAND SMALL LEAN PORK SPARERIBS... 1 LB. \$1.58
PINKY PIG BRAND MEATY MARKET STYLE PORK BACKBONES... 1 LB. \$1.48
DIXIE BEEF PATTY MIX... 3 LB. PKG. \$2.99
HICKORY SWEET FULLY COOKED BONELESS BUFFET HAM... 1 LB. \$1.99

PINKY PIG BRAND FRESH PORK FULL 1/4 LOIN ASST. CHOPS... 1 LB. \$1.48
W-D BRAND U.S. CHOICE BONELESS LEAN STEW... 1 LB. \$1.88
PINKY PIG BRAND BUTT OR SHANK PORTION FRESH PORK HAM ROAST... 1 LB. \$1.38
PINKY PIG BRAND FRESH HAM STEAKS... 1 LB. \$1.88

W-D BRAND WHOLE SMOKED PICNICS
WHOLE SLICED 4/8 LB. AVG. 78¢
LB. **68¢**

CAROLINA PRIDE FRANKS OR SLICED BOLOGNA
12 OZ. PKG. **99¢**

W-D BRAND U.S. CHOICE 15 LB. FREEZER BEEF
• 5 LB. BONELESS CHUCK ROAST
• 5 LB. BONELESS CHUCK STEAK
• 5 LB. BONELESS GROUND CHUCK
FREEZER BEEF
15 LB. BONELESS BEEF **\$25.99**

W-D BRAND U.S. CHOICE RIB EYE STEAK
1 LB. **\$3.98**

W-D BRAND ALL VARIETIES SLICED BOLOGNA
12 OZ. PKG. **99¢**
1 LB. PKG. **\$1.29**